



## WALKER DUPLEX

1115.224

Note - The Construction Drawings for this plan are very specific to a sloped lot. The right hand unit is lower than the left. The Garage on the left is also nearly level with the dwelling (which means some interesting foundation details).

Reverse plan available.

In addition to our Terms and Conditions (the "Terms"), please be aware of the following:

Art Form Architecture, LLC ("Artform") requires that our Drawings be built substantially as designed. Artform will not be obligated by or liable for use of this design with markups as part of any builder agreement. While we attempt to accommodate where possible and reasonable, and where the changes do not denigrate our design, any and all changes to Drawings must be approved in writing by Artform. It is recommended that you have your Drawing updated by Artform prior to attaching any Drawing to any builder agreement. Artform shall not be responsible for the misuse of or unauthorized alterations to any of its Drawings.



Width 106.00 FT

Depth 50.00 FT

Height 34.92 FT

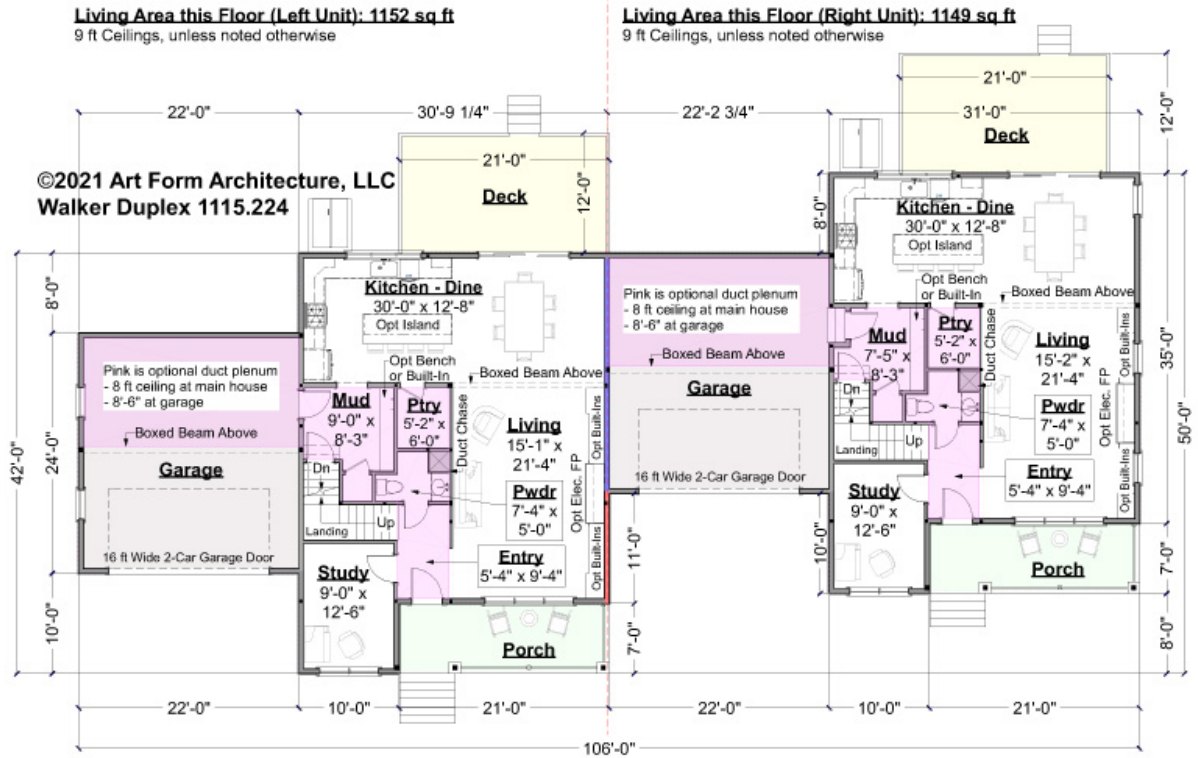
LIVING AREA		BEDROOMS		BATHROOMS	
	5454 FT		10		5
Main	2728 FT	Main	4	Main	2.5
Future	0 FT	Future	2	Future	0
2 <sup>nd</sup> Unit	2726 FT	2 <sup>nd</sup> Unit	4	2 <sup>nd</sup> Unit	2.5



# WALKER DUPLEX - 1<sup>ST</sup> FLOOR

## 1115.224

Some features shown are optional. Your Purchase & Sale Agreement governs, whether items are labeled "optional" in this document or not.



CLG HT SHOWN 9'-0"      CLG HT POSSIBLE 8'-0"

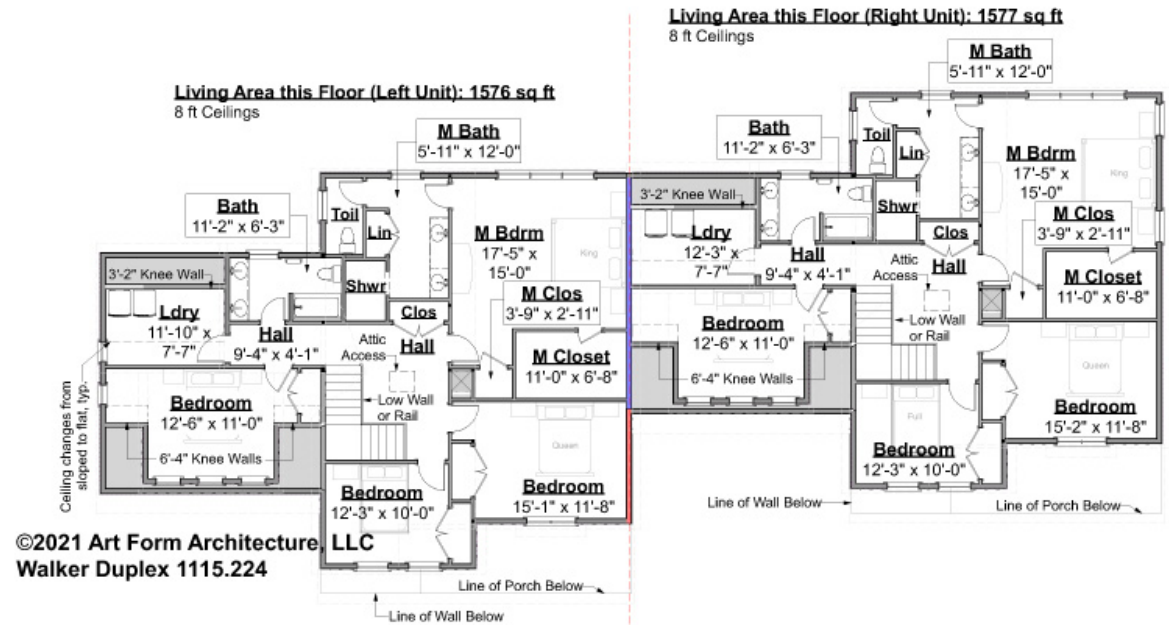
\* Major Change Fee, see website plan page for cost

F1 LIVING AREA	2301 FT	F1 BEDROOMS	2	F1 BATHROOMS	1
Main	1152.00 FT	Main		Main	0.50
Future	FT	Future	2.00	Future	
2 <sup>nd</sup> Unit	1149.00 FT	2 <sup>nd</sup> Unit		2 <sup>nd</sup> Unit	0.50



# WALKER DUPLEX - 2<sup>ND</sup> FLOOR 1115.224

Some features shown are optional. Your Purchase & Sale Agreement governs, whether items are labeled "optional" in this document or not.



CLG HT SHOWN 8'-0"

CLG HT POSSIBLE 9'-0"

\* Major Change Fee, see website plan page for cost

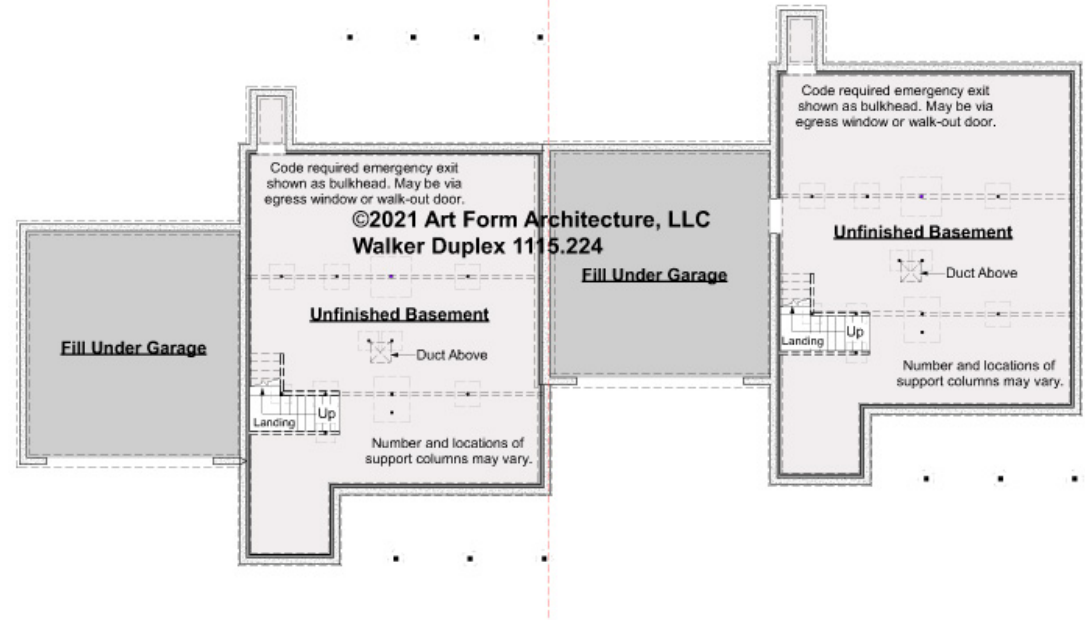
F1 LIVING AREA	3153 FT	F1 BEDROOMS	8	F1 BATHROOMS	4
Main	1576.00 FT	Main	4.00	Main	2.00
Future	FT	Future		Future	
2 <sup>nd</sup> Unit	1577.00 FT	2 <sup>nd</sup> Unit	4.00	2 <sup>nd</sup> Unit	2.00



# WALKER DUPLEX - BASEMENT

## 1115.224

Some features shown are optional. Your Purchase & Sale Agreement governs, whether items are labeled "optional" in this document or not.



CLG HT SHOWN 7'-8"      CLG HT POSSIBLE 8'-0"

\* Major Change Fee, see website plan page for cost

F1 LIVING AREA		0 FT		F1 BEDROOMS		0		F1 BATHROOMS		0	
Main	FT			Main				Main			
Future	FT			Future				Future			
2 <sup>nd</sup> Unit	FT			2 <sup>nd</sup> Unit				2 <sup>nd</sup> Unit			



## WALKER DUPLEX - FRONT ELEVATION

1115.224

Some features shown are optional. Your Purchase & Sale Agreement governs, whether items are labeled "optional" in this document or not.

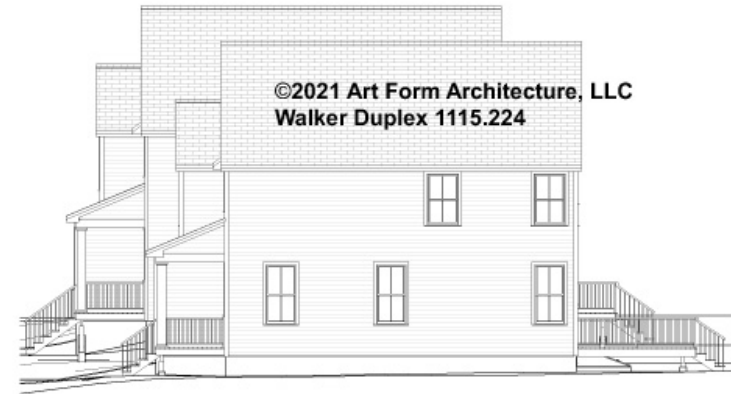




Art Form Architecture, LLC

## WALKER DUPLEX - RIGHT ELEVATION 1115.224

Some features shown are optional. Your Purchase & Sale Agreement governs, whether items are labeled "optional" in this document or not.







Art Form Architecture, LLC

## WALKER DUPLEX - REAR ELEVATION 1115.224

Some features shown are optional. Your Purchase & Sale Agreement governs, whether items are labeled "optional" in this document or not.





Art Form Architecture, LLC

## WALKER DUPLEX - LEFT ELEVATION 1115.224

Some features shown are optional. Your Purchase & Sale Agreement governs, whether items are labeled "optional" in this document or not.

