



VALENTINA

1121.124 GR

In addition to our Terms and Conditions (the "Terms"), please be aware of the following:

Art Form Architecture, LLC ("Artform") requires that our Drawings be built substantially as designed. Artform will not be obligated by or liable for use of this design with markups as part of any builder agreement. While we attempt to accommodate where possible and reasonable, and where the changes do not denigrate our design, any and all changes to Drawings must be approved in writing by Artform. It is recommended that you have your Drawing updated by Artform prior to attaching any Drawing to any builder agreement. Artform shall not be responsible for the misuse of or unauthorized alterations to any of its Drawings.



Width 63.00 FT

Depth 68.00 FT

Height 37.42 FT

LIVING AREA		BEDROOMS		BATHROOMS	
	6187 FT		10		3
Main	3952 FT	Main	5	Main	3
Future	2235 FT	Future	5	Future	0
2 nd Unit	0 FT	2 nd Unit	0	2 nd Unit	0

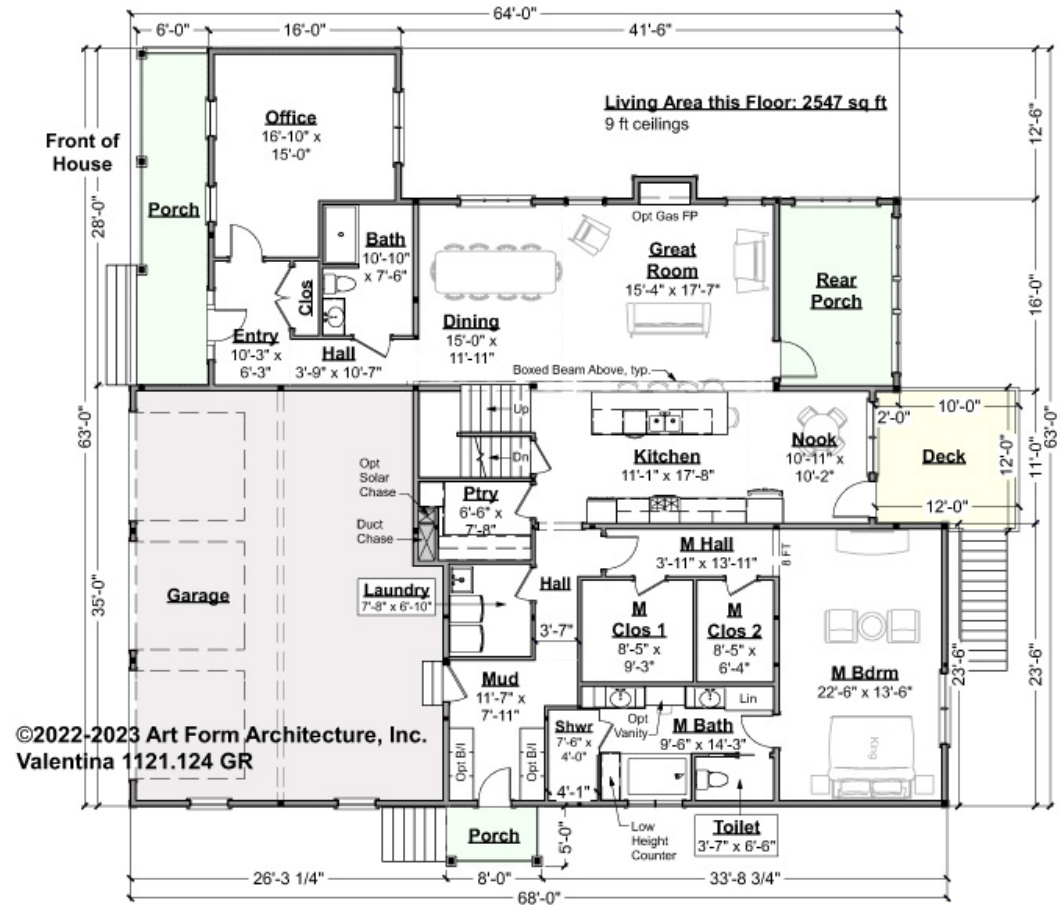


VALENTINA - 1ST FLOOR

1121.124 GR

NOTE: Left side of plan is the front of house.

Some features shown are optional. Your Purchase & Sale Agreement governs, whether items are labeled "optional" in this document or not.



©2022-2023 Art Form Architecture, Inc.
Valentina 1121.124 GR

CLG HT SHOWN 8'-1" - 8'-11" CLG HT POSSIBLE 8'-0"

* Major Change Fee, see website plan page for cost

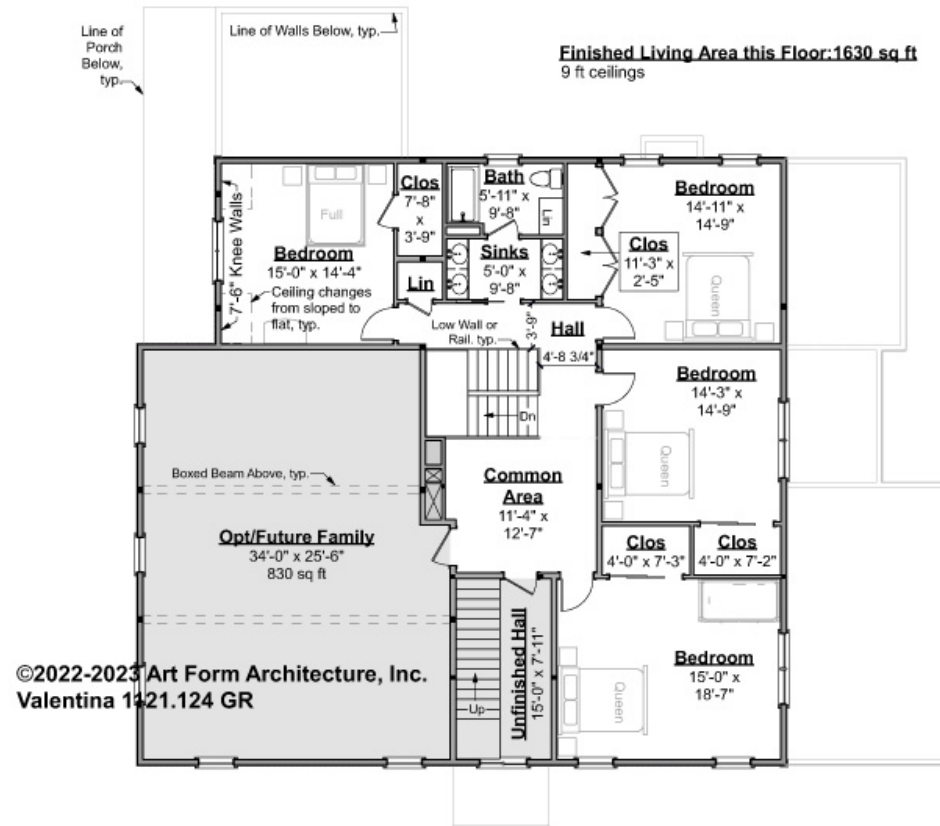
F1 LIVING AREA	2547 ^{FT}	F1 BEDROOMS	2	F1 BATHROOMS	2
Main	2547.00 ^{FT}	Main	1.00	Main	2.00
Future	FT	Future	1.00	Future	
2 nd Unit	FT	2 nd Unit		2 nd Unit	



VALENTINA - 2ND FLOOR

1121.124 GR

Some features shown are optional. Your Purchase & Sale Agreement governs, whether items are labeled "optional" in this document or not.



©2022-2023 Art Form Architecture, Inc.
Valentina 1121.124 GR

CLG HT SHOWN 9'-0" CLG HT POSSIBLE 8'-0"

* Major Change Fee, see website plan page for cost

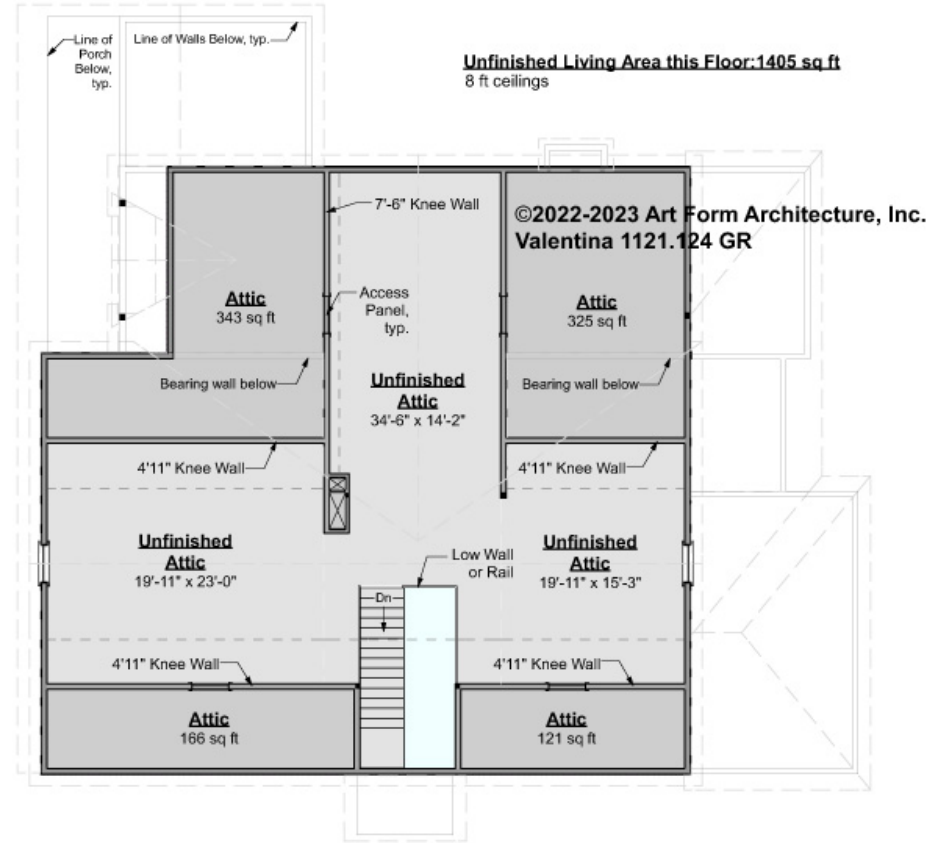
F1 LIVING AREA	2235 FT	F1 BEDROOMS	5	F1 BATHROOMS	1
Main	1405.00 FT	Main	4.00	Main	1.00
Future	830.00 FT	Future	1.00	Future	0.00
2 nd Unit	FT	2 nd Unit		2 nd Unit	



VALENTINA - 3RD FLOOR

1121.124 GR

Some features shown are optional. Your Purchase & Sale Agreement governs, whether items are labeled "optional" in this document or not.



CLG HT SHOWN 8'-0" CLG HT POSSIBLE 9'-0"

** Major Change Fee, see website plan page for cost*

F1 LIVING AREA		F1 BEDROOMS		F1 BATHROOMS	
	1405 ^{FT}		3		0
Main	FT	Main		Main	
Future	1405.00 ^{FT}	Future	3.00	Future	
2 nd Unit	FT	2 nd Unit		2 nd Unit	

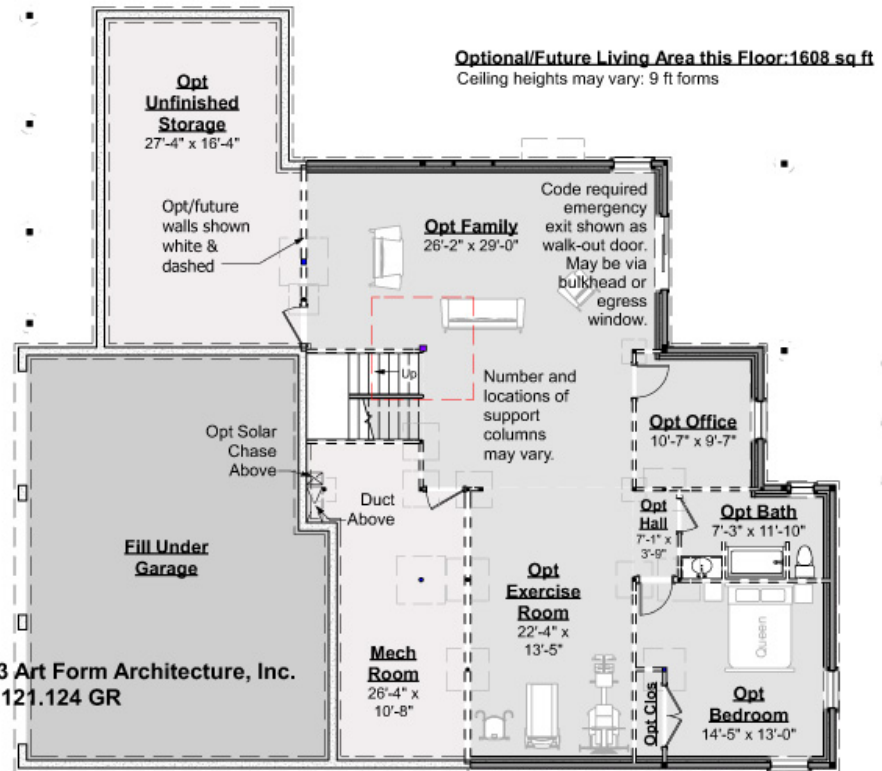


VALENTINA - BASEMENT

1121.124 GR

Note: future finished basement area is NOT included in main or future Living Area, but IS shown on CDs. We do this so Search doesn't mislead.

Some features shown are optional. Your Purchase & Sale Agreement governs, whether items are labeled "optional" in this document or not.



©2022-2023 Art Form Architecture, Inc.
Valentina 1121.124 GR

CLG HT SHOWN 9'-0" CLG HT POSSIBLE 7'-8"

* Major Change Fee, see website plan page for cost

F1 LIVING AREA		F1 BEDROOMS		F1 BATHROOMS	
0	FT	0		0	
Main	FT	Main		Main	
Future	FT	Future		Future	
2 nd Unit	FT	2 nd Unit		2 nd Unit	



VALENTINA - FRONT ELEVATION

1121.124 GR

Some features shown are optional. Your Purchase & Sale Agreement governs, whether items are labeled "optional" in this document or not.



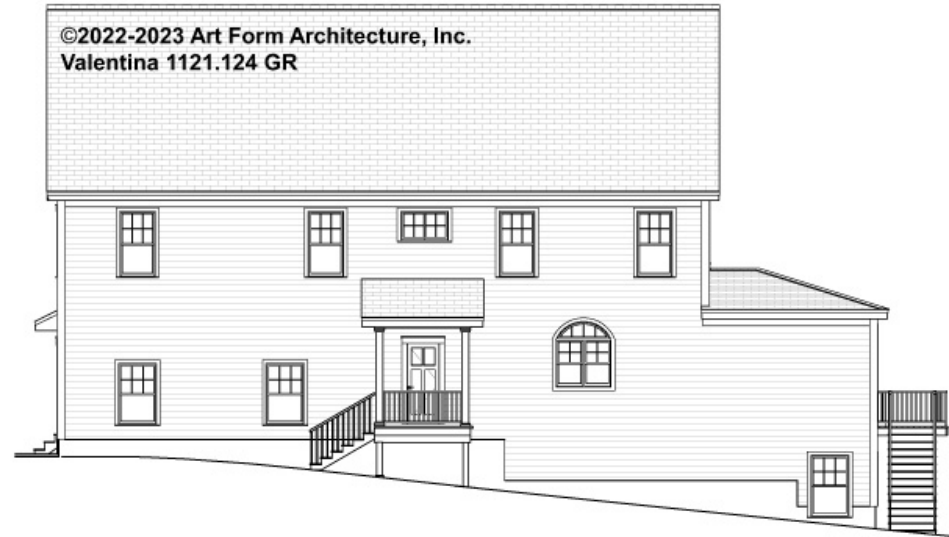


Art Form Architecture, LLC

VALENTINA - RIGHT ELEVATION

1121.124 GR

Some features shown are optional. Your Purchase & Sale Agreement governs, whether items are labeled "optional" in this document or not.





VALENTINA - REAR ELEVATION

1121.124 GR

Some features shown are optional. Your Purchase & Sale Agreement governs, whether items are labeled "optional" in this document or not.





Art Form Architecture, LLC

VALENTINA - LEFT ELEVATION

1121.124 GR

Some features shown are optional. Your Purchase & Sale Agreement governs, whether items are labeled "optional" in this document or not.





Art Form Architecture, LLC

VALENTINA - REAR RENDER

1121.124 GR

—
Some features shown are optional. Your Purchase & Sale Agreement governs, whether items are labeled "optional" in this document or not.

