



## TWIN PEAKS CLASSIC

442.124.v14 GR

In addition to our Terms and Conditions (the "Terms"), please be aware of the following:

Art Form Architecture, LLC ("Artform") requires that our Drawings be built substantially as designed. Artform will not be obligated by or liable for use of this design with markups as part of any builder agreement. While we attempt to accommodate where possible and reasonable, and where the changes do not denigrate our design, any and all changes to Drawings must be approved in writing by Artform. It is recommended that you have your Drawing updated by Artform prior to attaching any Drawing to any builder agreement. Artform shall not be responsible for the misuse of or unauthorized alterations to any of its Drawings.



Width 97.50 FT

Depth 40.00 FT

Height 28.50 FT

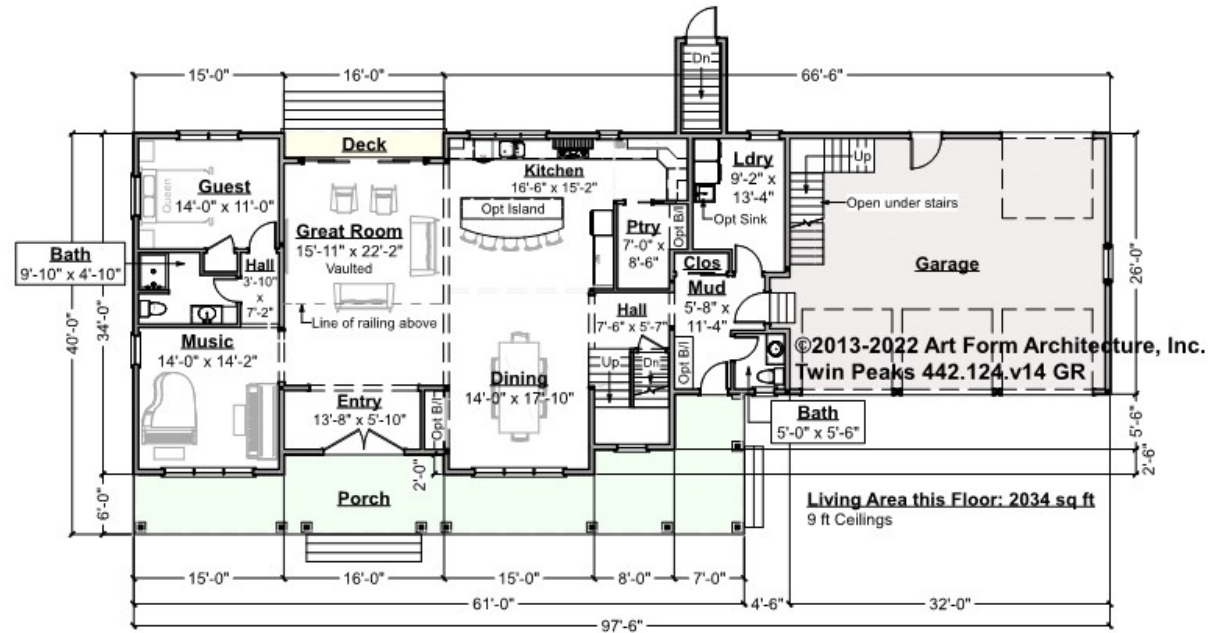
LIVING AREA		BEDROOMS		BATHROOMS	
	4407 FT <sup>2</sup>		7		4.5
Main	4407 FT <sup>2</sup>	Main	4	Main	4.5
Future	0 FT <sup>2</sup>	Future	3	Future	0
2 <sup>nd</sup> Unit	0 FT <sup>2</sup>	2 <sup>nd</sup> Unit	0	2 <sup>nd</sup> Unit	0



# TWIN PEAKS CLASSIC - 1<sup>ST</sup> FLOOR

## 442.124.v14 GR

Some features shown are optional. Your Purchase & Sale Agreement governs, whether items are labeled "optional" in this document or not.



CLG HT SHOWN 9'-0"      CLG HT POSSIBLE 8'-0"

\* Major Change Fee, see website plan page for cost

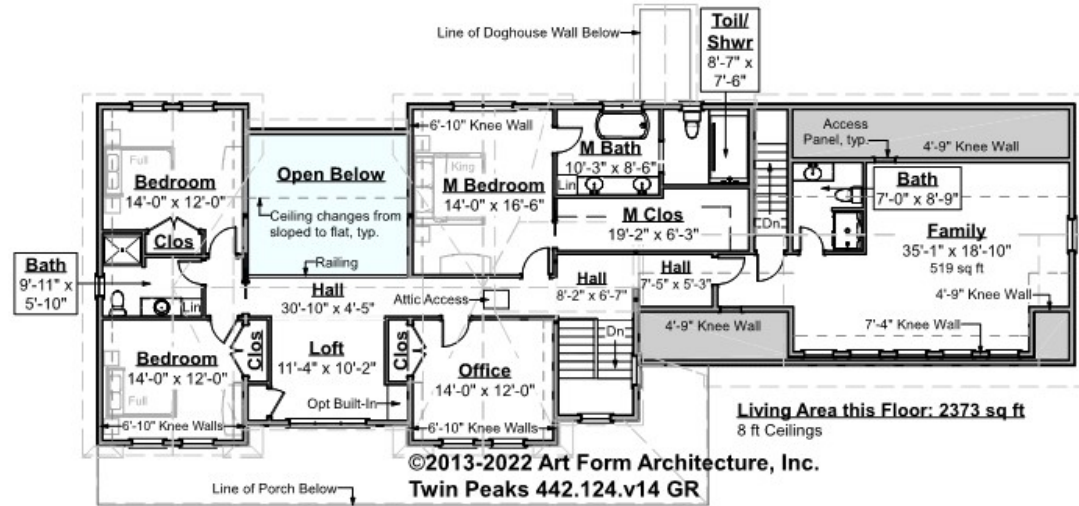
F1 LIVING AREA	2034 FT	F1 BEDROOMS	2	F1 BATHROOMS	1.5
Main	2034.00 FT	Main	1.00	Main	1.50
Future	FT	Future	1.00	Future	
2 <sup>nd</sup> Unit	FT	2 <sup>nd</sup> Unit		2 <sup>nd</sup> Unit	



# TWIN PEAKS CLASSIC - 2<sup>ND</sup> FLOOR

## 442.124.v14 GR

Some features shown are optional. Your Purchase & Sale Agreement governs, whether items are labeled "optional" in this document or not.



CLG HT SHOWN 8'-0"      CLG HT POSSIBLE 9'-0"

\* Major Change Fee, see website plan page for cost

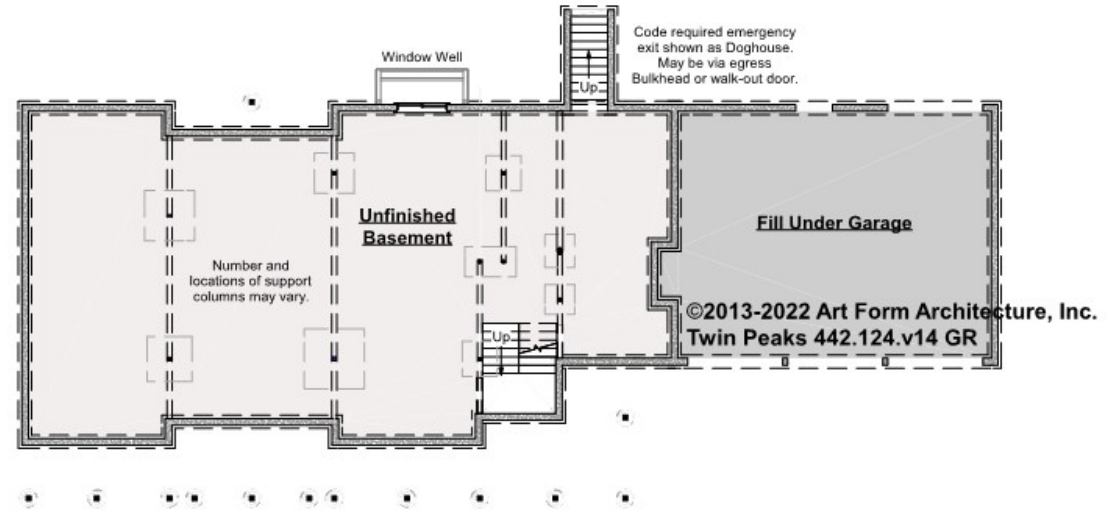
F1 LIVING AREA	2373 FT	F1 BEDROOMS	5	F1 BATHROOMS	3
Main	2373.00 FT	Main	3.00	Main	3.00
Future	FT	Future	2.00	Future	
2 <sup>nd</sup> Unit	FT	2 <sup>nd</sup> Unit		2 <sup>nd</sup> Unit	



# TWIN PEAKS CLASSIC - BASEMENT

## 442.124.v14 GR

Some features shown are optional. Your Purchase & Sale Agreement governs, whether items are labeled "optional" in this document or not.



CLG HT SHOWN 7'-8"      CLG HT POSSIBLE 9'-0"

\* Major Change Fee, see website plan page for cost

F1 LIVING AREA		F1 BEDROOMS		F1 BATHROOMS	
0	FT	0		0	
Main	FT	Main		Main	
Future	FT	Future		Future	
2 <sup>nd</sup> Unit	FT	2 <sup>nd</sup> Unit		2 <sup>nd</sup> Unit	



Art Form Architecture, LLC

## TWIN PEAKS CLASSIC - FRONT ELEVATION

442.124.v14 GR

Some features shown are optional. Your Purchase & Sale Agreement governs, whether items are labeled "optional" in this document or not.





Art Form Architecture, LLC

## TWIN PEAKS CLASSIC - RIGHT ELEVATION

442.124.v14 GR

Some features shown are optional. Your Purchase & Sale Agreement governs, whether items are labeled "optional" in this document or not.

©2013-2022 Art Form Architecture, Inc.  
Twin Peaks 442.124.v14 GR



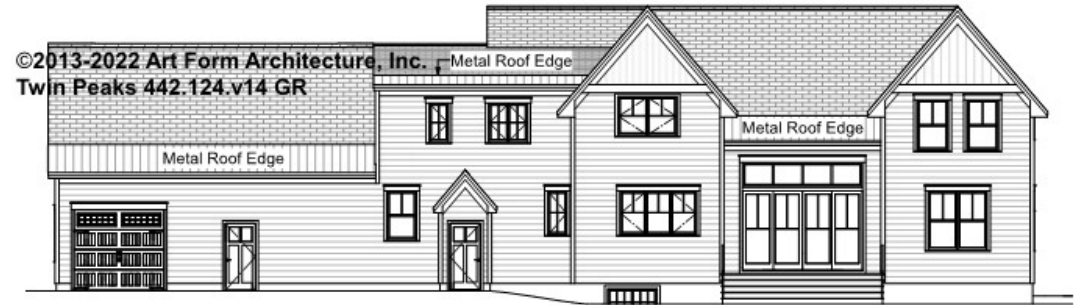


Art Form Architecture, LLC

## TWIN PEAKS CLASSIC - REAR ELEVATION

442.124.v14 GR

Some features shown are optional. Your Purchase & Sale Agreement governs, whether items are labeled "optional" in this document or not.



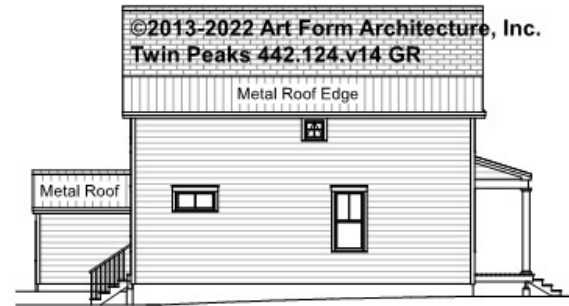


Art Form Architecture, LLC

## TWIN PEAKS CLASSIC - LEFT ELEVATION

442.124.v14 GR

Some features shown are optional. Your Purchase & Sale Agreement governs, whether items are labeled "optional" in this document or not.







Art Form Architecture, LLC

## TWIN PEAKS CLASSIC - REAR RENDER

442.124.v14 GR

—  
Some features shown are optional. Your Purchase & Sale Agreement governs, whether items are labeled "optional" in this document or not.

