



# TWIN PEAKS

## 442.124.v10 GL

In addition to our Terms and Conditions (the "Terms"), please be aware of the following:

Art Form Architecture, LLC ("Artform") requires that our Drawings be built substantially as designed. Artform will not be obligated by or liable for use of this design with markups as part of any builder agreement. While we attempt to accommodate where possible and reasonable, and where the changes do not denigrate our design, any and all changes to Drawings must be approved in writing by Artform. It is recommended that you have your Drawing updated by Artform prior to attaching any Drawing to any builder agreement. Artform shall not be responsible for the misuse of or unauthorized alterations to any of its Drawings.



Width 80.00 FT

Depth 44.00 FT

Height 28.50 FT

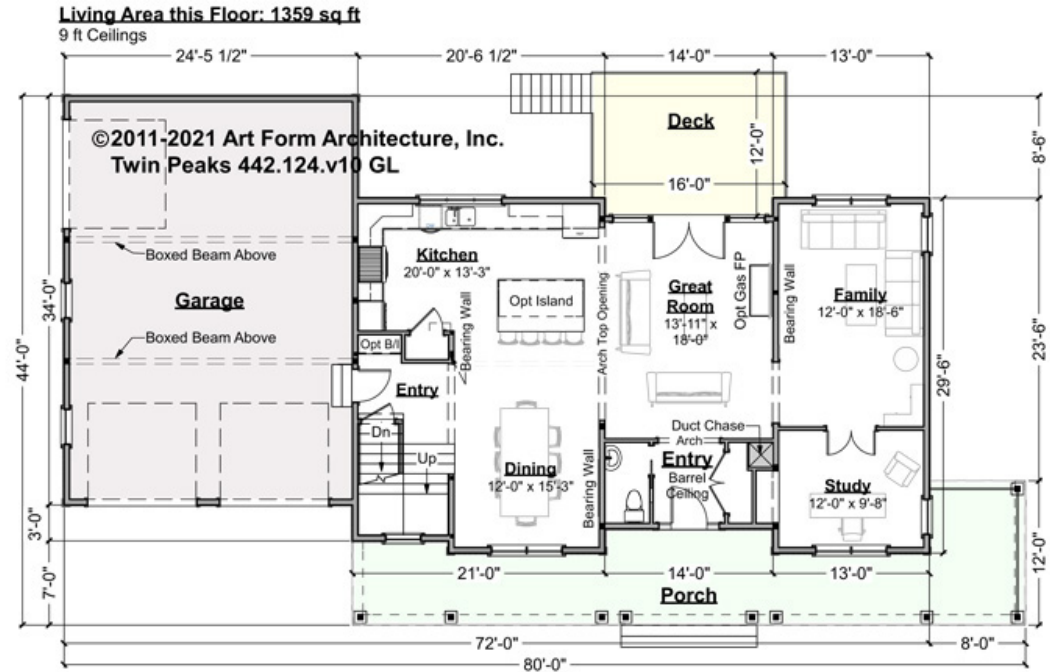
LIVING AREA		BEDROOMS		BATHROOMS	
	3138 FT <sup>2</sup>		6		3.5
Main	3138 FT <sup>2</sup>	Main	4	Main	3.5
Future	0 FT <sup>2</sup>	Future	2	Future	0
2 <sup>nd</sup> Unit	0 FT <sup>2</sup>	2 <sup>nd</sup> Unit	0	2 <sup>nd</sup> Unit	0



# TWIN PEAKS - 1<sup>ST</sup> FLOOR

## 442.124.v10 GL

Some features shown are optional. Your Purchase & Sale Agreement governs, whether items are labeled "optional" in this document or not.



CLG HT SHOWN 9'-0"    CLG HT POSSIBLE 8'-0"

\* Major Change Fee, see website plan page for cost

F1 LIVING AREA	1359 <sup>FT</sup>	F1 BEDROOMS	1	F1 BATHROOMS	0.5
Main	1359.00 <sup>FT</sup>	Main	0.00	Main	0.50
Future	0.00 <sup>FT</sup>	Future	1.00	Future	0.00
2 <sup>nd</sup> Unit	0.00 <sup>FT</sup>	2 <sup>nd</sup> Unit	0.00	2 <sup>nd</sup> Unit	0.00



Art Form Architecture, LLC

## TWIN PEAKS - 1<sup>ST</sup> FLOOR

### 442.124.v10 GL

Some features shown are optional. Your Purchase & Sale Agreement governs, whether items are labeled "optional" in this document or not.



©2011-2021 Art Form Architecture, Inc.  
Twin Peaks 442.124.v10 GL

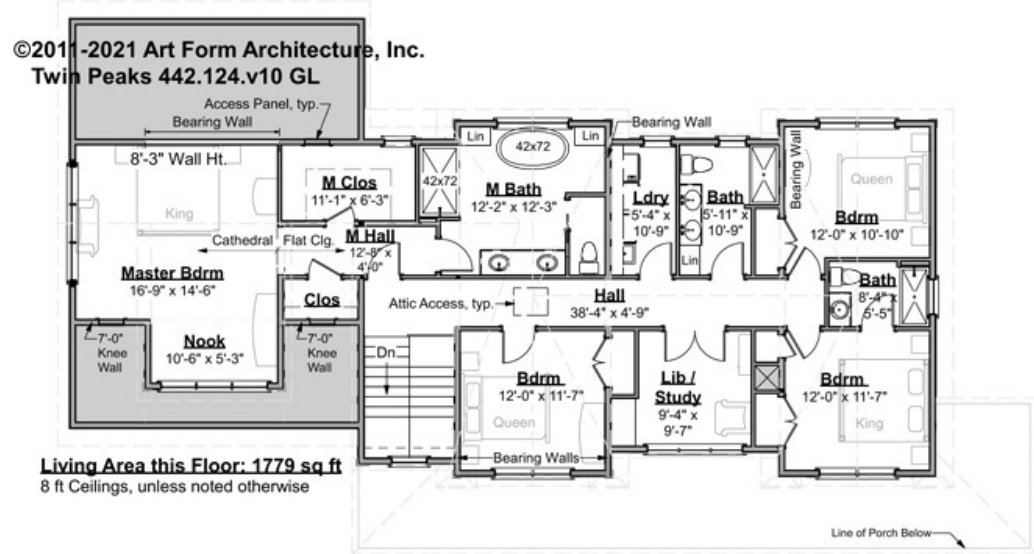
Kitchen & Living - Additional Image



# TWIN PEAKS - 2<sup>ND</sup> FLOOR

## 442.124.v10 GL

Some features shown are optional. Your Purchase & Sale Agreement governs, whether items are labeled "optional" in this document or not.



CLG HT SHOWN 8'-0"      CLG HT POSSIBLE 9'-0"

\* Major Change Fee, see website plan page for cost

F1 LIVING AREA	1779 FT	F1 BEDROOMS	5	F1 BATHROOMS	3
Main	1779.00 FT	Main	4.00	Main	3.00
Future	0.00 FT	Future	1.00	Future	0.00
2 <sup>nd</sup> Unit	0.00 FT	2 <sup>nd</sup> Unit	0.00	2 <sup>nd</sup> Unit	0.00



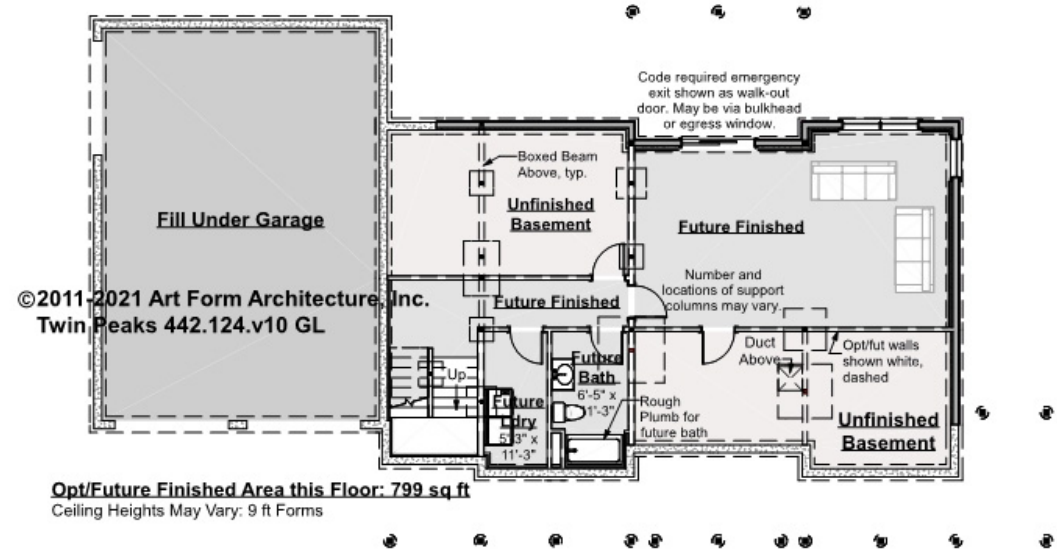


# TWIN PEAKS - BASEMENT

## 442.124.v10 GL

The construction drawings show this lower level as finished. We don't include that in our data chart so Search isn't misleading. Everybody knows you can finish a basement!

Some features shown are optional. Your Purchase & Sale Agreement governs, whether items are labeled "optional" in this document or not.



CLG HT SHOWN 8'-1" - 8'-11"

CLG HT POSSIBLE 7'-8"

\* Major Change Fee, see website plan page for cost

F1 LIVING AREA		F1 BEDROOMS		F1 BATHROOMS	
0	FT	0		0	
Main	0.00	Main	0.00	Main	0.00
Future	0.00	Future	0.00	Future	0.00
2 <sup>nd</sup> Unit	0.00	2 <sup>nd</sup> Unit	0.00	2 <sup>nd</sup> Unit	0.00



## TWIN PEAKS - FRONT ELEVATION

### 442.124.v10 GL

Some features shown are optional. Your Purchase & Sale Agreement governs, whether items are labeled "optional" in this document or not.



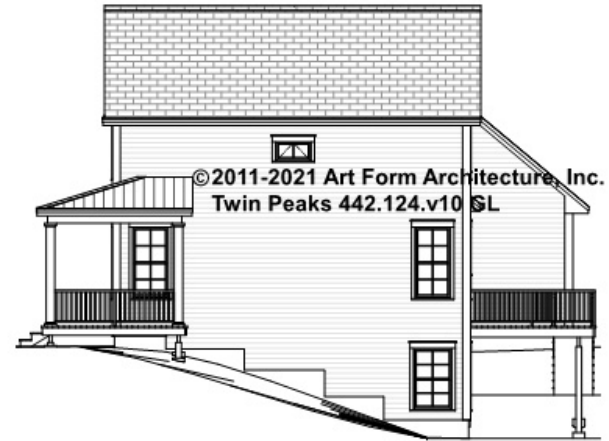


Art Form Architecture, LLC

## TWIN PEAKS - RIGHT ELEVATION

442.124.v10 GL

Some features shown are optional. Your Purchase & Sale Agreement governs, whether items are labeled "optional" in this document or not.





## TWIN PEAKS - REAR ELEVATION

### 442.124.v10 GL

Some features shown are optional. Your Purchase & Sale Agreement governs, whether items are labeled "optional" in this document or not.







Art Form Architecture, LLC

## TWIN PEAKS - LEFT ELEVATION

442.124.v10 GL

Some features shown are optional. Your Purchase & Sale Agreement governs, whether items are labeled "optional" in this document or not.

©2011-2021 Art Form Architecture, Inc.  
Twin Peaks 442.124.v10 GL

