



# TIMMY

## 997.124 GR

In addition to our Terms and Conditions (the "Terms"), please be aware of the following:

Art Form Architecture, LLC ("Artform") requires that our Drawings be built substantially as designed. Artform will not be obligated by or liable for use of this design with markups as part of any builder agreement. While we attempt to accommodate where possible and reasonable, and where the changes do not denigrate our design, any and all changes to Drawings must be approved in writing by Artform. It is recommended that you have your Drawing updated by Artform prior to attaching any Drawing to any builder agreement. Artform shall not be responsible for the misuse of or unauthorized alterations to any of its Drawings.



Width 46.00 FT

Depth 24.00 FT

Height 27.58 FT

LIVING AREA		BEDROOMS		BATHROOMS	
	1439 FT		3		2.5
Main	1439 FT	Main	3	Main	2.5
Future	0 FT	Future	0	Future	0
2 <sup>nd</sup> Unit	0 FT	2 <sup>nd</sup> Unit	0	2 <sup>nd</sup> Unit	0

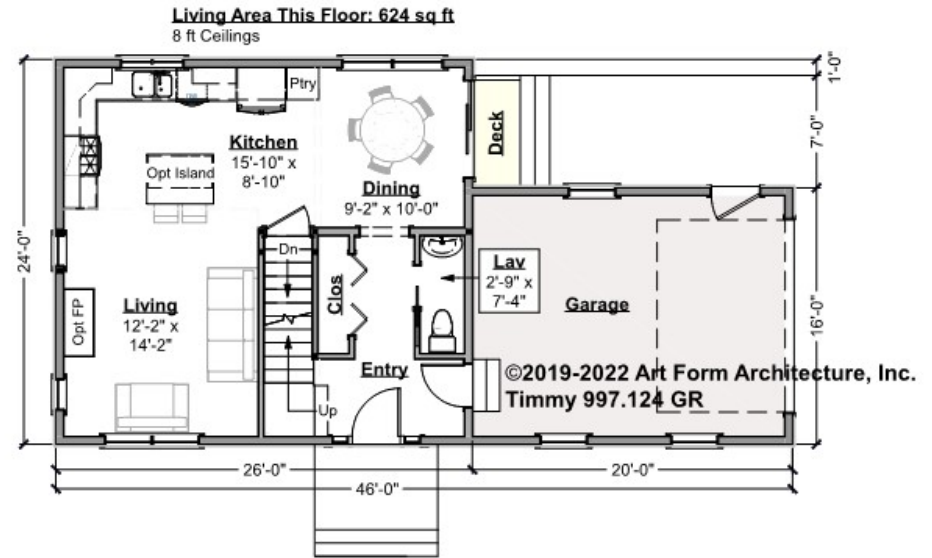


# TIMMY - 1<sup>ST</sup> FLOOR

## 997.124 GR

To increase ceiling height to 8'-6", would need to remove door sidelights (to make room for an extra stair tread)

Some features shown are optional. Your Purchase & Sale Agreement governs, whether items are labeled "optional" in this document or not.



CLG HT SHOWN 8'-0"      CLG HT POSSIBLE 8'-1" - 8'-11"

\* Major Change Fee, see website plan page for cost

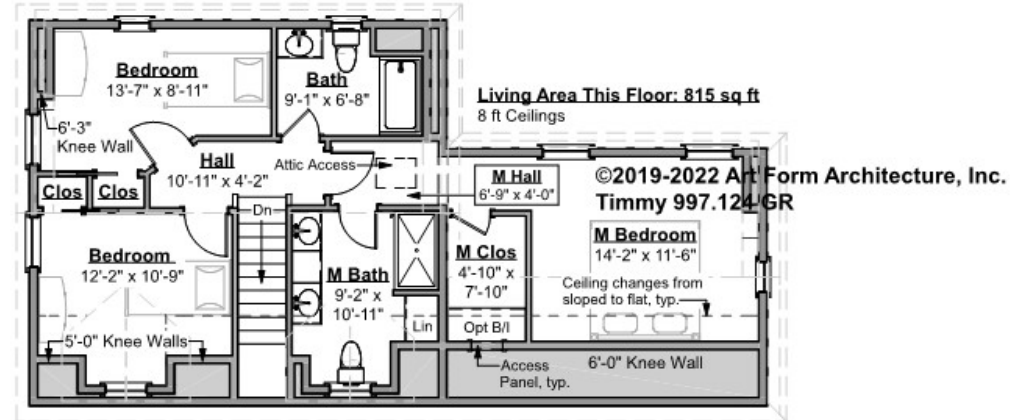
F1 LIVING AREA		F1 BEDROOMS		F1 BATHROOMS	
	624 <sup>FT</sup>		0		0.5
Main	624.00 <sup>FT</sup>	Main	0.00	Main	0.50
Future	0.00 <sup>FT</sup>	Future	0.00	Future	0.00
2 <sup>nd</sup> Unit	0.00 <sup>FT</sup>	2 <sup>nd</sup> Unit	0.00	2 <sup>nd</sup> Unit	0.00



# TIMMY - 2<sup>ND</sup> FLOOR

## 997.124 GR

Some features shown are optional. Your Purchase & Sale Agreement governs, whether items are labeled "optional" in this document or not.



CLG HT SHOWN 8'-0"      CLG HT POSSIBLE 8'-0"

\* Major Change Fee, see website plan page for cost

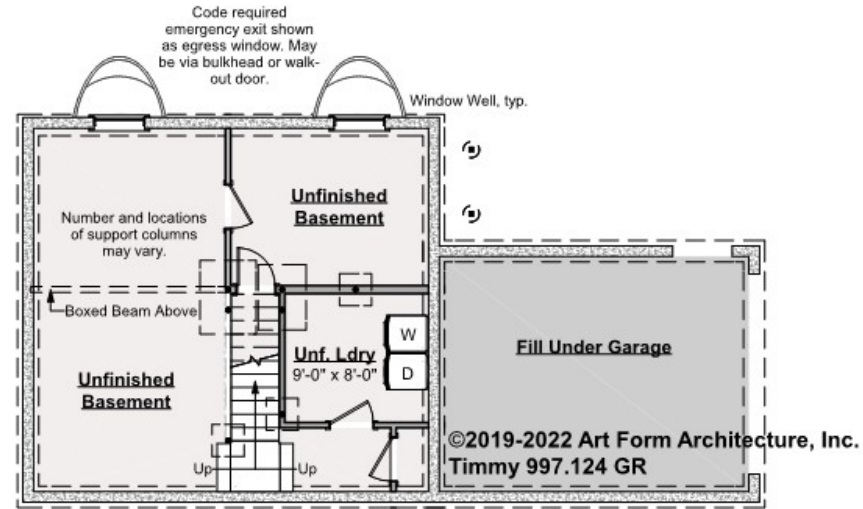
F1 LIVING AREA	815 <sup>FT</sup>	F1 BEDROOMS	3	F1 BATHROOMS	2
Main	815.00 <sup>FT</sup>	Main	3.00	Main	2.00
Future	0.00 <sup>FT</sup>	Future	0.00	Future	0.00
2 <sup>nd</sup> Unit	0.00 <sup>FT</sup>	2 <sup>nd</sup> Unit	0.00	2 <sup>nd</sup> Unit	0.00



# TIMMY - BASEMENT

## 997.124 GR

Some features shown are optional. Your Purchase & Sale Agreement governs, whether items are labeled "optional" in this document or not.



**CLG HT SHOWN 7'-8"      CLG HT POSSIBLE 9'-0"**

*\* Major Change Fee, see website plan page for cost*

F1 LIVING AREA		F1 BEDROOMS		F1 BATHROOMS	
0	FT	0		0	
Main	0.00	Main	0.00	Main	0.00
Future	0.00	Future	0.00	Future	0.00
2 <sup>nd</sup> Unit	0.00	2 <sup>nd</sup> Unit	0.00	2 <sup>nd</sup> Unit	0.00



## TIMMY - FRONT ELEVATION

### 997.124 GR

Some features shown are optional. Your Purchase & Sale Agreement governs, whether items are labeled "optional" in this document or not.





Art Form Architecture, LLC

## TIMMY - RIGHT ELEVATION

997.124 GR

Some features shown are optional. Your Purchase & Sale Agreement governs, whether items are labeled "optional" in this document or not.





Art Form Architecture, LLC

## TIMMY - REAR ELEVATION

997.124 GR

Some features shown are optional. Your Purchase & Sale Agreement governs, whether items are labeled "optional" in this document or not.





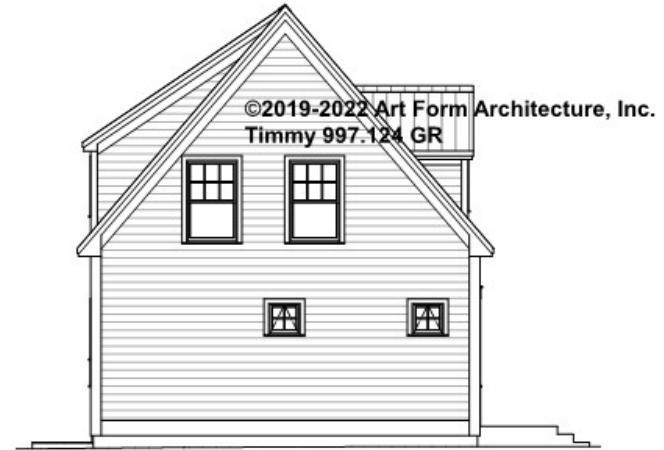


Art Form Architecture, LLC

## TIMMY - LEFT ELEVATION

997.124 GR

Some features shown are optional. Your Purchase & Sale Agreement governs, whether items are labeled "optional" in this document or not.







Art Form Architecture, LLC

## TIMMY - REAR RENDER

997.124 GR

Some features shown are optional. Your Purchase & Sale Agreement governs, whether items are labeled "optional" in this document or not.

