



TAYBERRY CRISP

936.144.v4 GR

Part of the **Bakery Series Collection**.

Reverse plan available.

—

In addition to our Terms and Conditions (the "Terms"), please be aware of the following:

Art Form Architecture, LLC ("Artform") requires that our Drawings be built substantially as designed. Artform will not be obligated by or liable for use of this design with markups as part of any builder agreement. While we attempt to accommodate where possible and reasonable, and where the changes do not denigrate our design, any and all changes to Drawings must be approved in writing by Artform. It is recommended that you have your Drawing updated by Artform prior to attaching any Drawing to any builder agreement. Artform shall not be responsible for the misuse of or unauthorized alterations to any of its Drawings.



Width 56.00 FT

Depth 61.16 FT

Height 24.42 FT

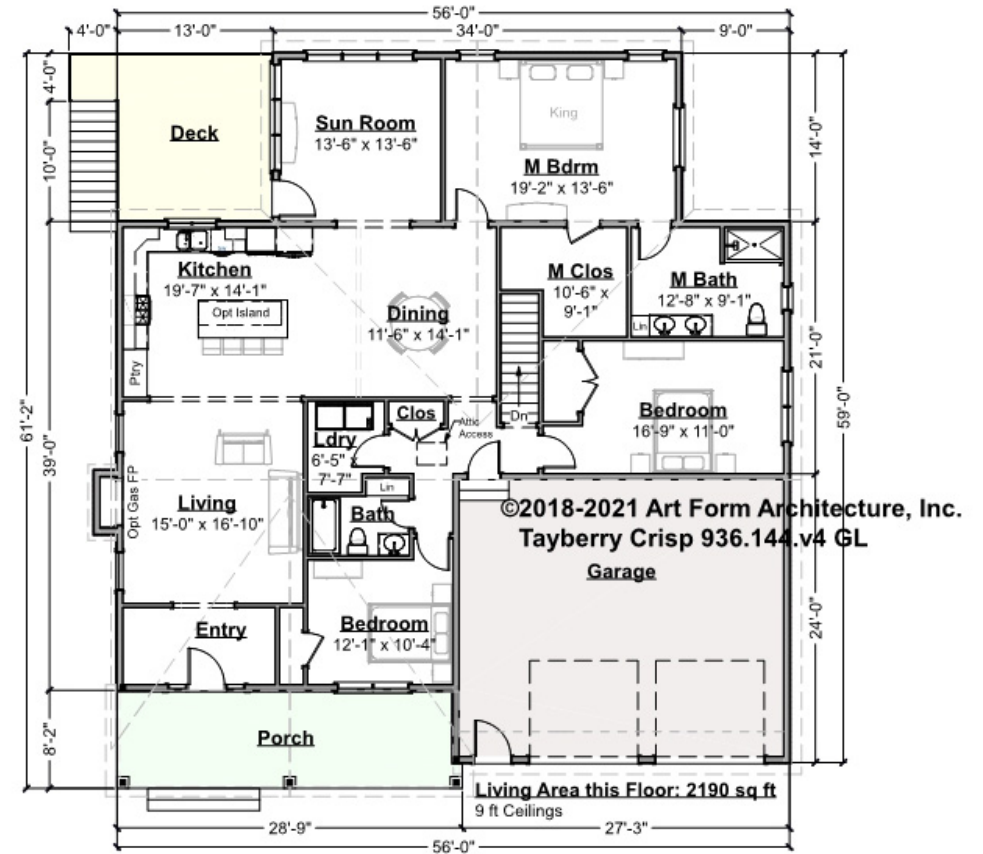
| LIVING AREA | | BEDROOMS | | BATHROOMS | |
|----------------------|----------------------|----------------------|---|----------------------|---|
| | 2190 FT ² | | 3 | | 2 |
| Main | 2190 FT ² | Main | 3 | Main | 2 |
| Future | 0 FT ² | Future | 0 | Future | 0 |
| 2 nd Unit | 0 FT ² | 2 nd Unit | 0 | 2 nd Unit | 0 |



TAYBERRY CRISP - 1ST FLOOR

936.144.v4 GR

Some features shown are optional. Your Purchase & Sale Agreement governs, whether items are labeled "optional" in this document or not.



CLG HT SHOWN 9'-0"

CLG HT POSSIBLE 8'-0"

* Major Change Fee, see website plan page for cost

| F1 LIVING AREA | 2190 ^{FT} | F1 BEDROOMS | 3 | F1 BATHROOMS | 2 |
|----------------------|-----------------------|----------------------|------|----------------------|------|
| Main | 2190.00 ^{FT} | Main | 3.00 | Main | 2.00 |
| Future | 0.00 ^{FT} | Future | 0.00 | Future | 0.00 |
| 2 nd Unit | 0.00 ^{FT} | 2 nd Unit | 0.00 | 2 nd Unit | 0.00 |

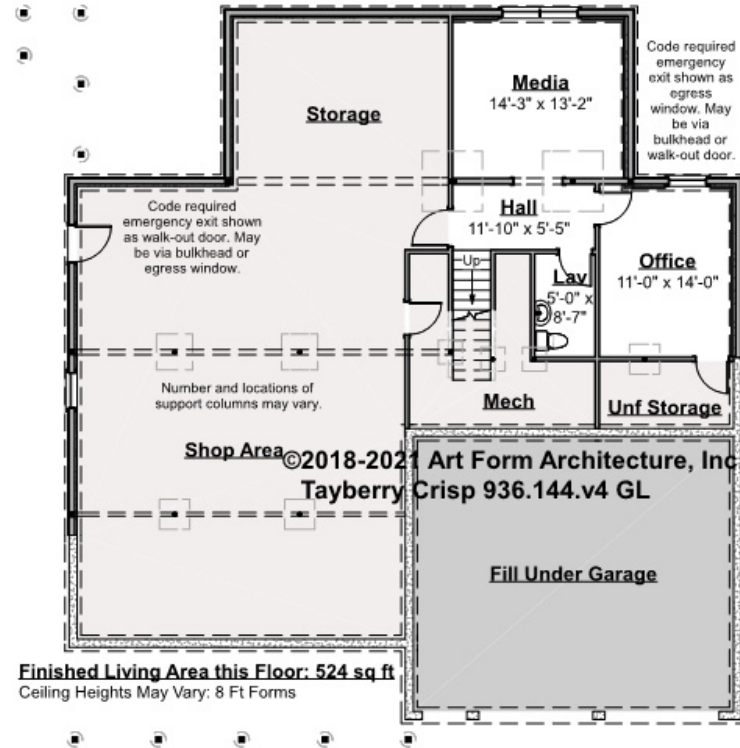


TAYBERRY CRISP - BASEMENT

936.144.v4 GR

The construction drawings show this lower level as finished. We don't include that in our data chart so Search isn't misleading. Everybody knows you can finish a basement!

Some features shown are optional. Your Purchase & Sale Agreement governs, whether items are labeled "optional" in this document or not.



CLG HT SHOWN 7'-8"

CLG HT POSSIBLE 9'-0"

* Major Change Fee, see website plan page for cost

| F1 LIVING AREA | 0 FT | F1 BEDROOMS | 0 | F1 BATHROOMS | 0 |
|----------------------|---------|----------------------|------|----------------------|------|
| Main | 0.00 FT | Main | 0.00 | Main | 0.00 |
| Future | FT | Future | 0.00 | Future | |
| 2 nd Unit | 0.00 FT | 2 nd Unit | 0.00 | 2 nd Unit | 0.00 |

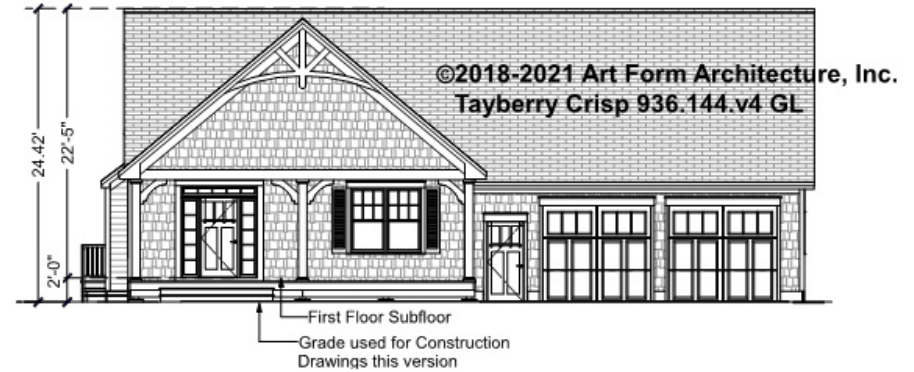


Art Form Architecture, LLC

TAYBERRY CRISP - FRONT ELEVATION

936.144.v4 GR

Some features shown are optional. Your Purchase & Sale Agreement governs, whether items are labeled "optional" in this document or not.



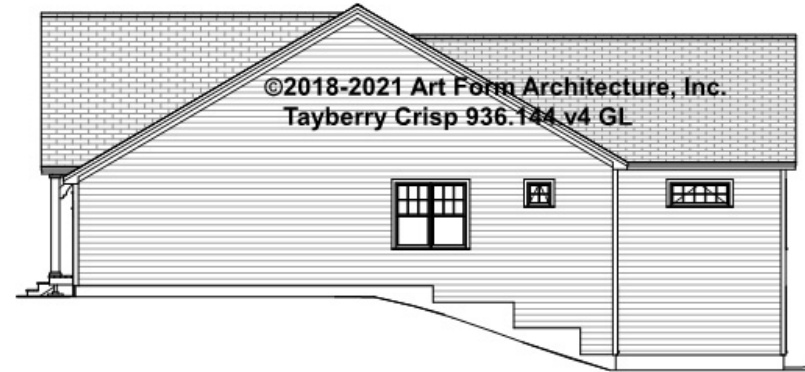


Art Form Architecture, LLC

TAYBERRY CRISP - RIGHT ELEVATION

936.144.v4 GR

Some features shown are optional. Your Purchase & Sale Agreement governs, whether items are labeled "optional" in this document or not.





Art Form Architecture, LLC

TAYBERRY CRISP - REAR ELEVATION

936.144.v4 GR

Some features shown are optional. Your Purchase & Sale Agreement governs, whether items are labeled "optional" in this document or not.





Art Form Architecture, LLC

TAYBERRY CRISP - LEFT ELEVATION

936.144.v4 GR

Some features shown are optional. Your Purchase & Sale Agreement governs, whether items are labeled "optional" in this document or not.

