



SYLVESTER

869.124

Got cats? Got impish cats? (or dogs...). This is one of a series of designs that allow the kitchen to be "open plan" and yet still closed off when you need to restrict the range of a furry friend.

Note that searchable width does NOT include the screen porch, as it's optional.

This is a new design that has not yet been built. It's here to offer a starting point for customization. It's priced so that changes that do not increase the size significantly will be at no additional charge. Hourly design fees will apply if you make changes.

—

In addition to our Terms and Conditions (the "Terms"), please be aware of the following:

Art Form Architecture, LLC ("Artform") requires that our Drawings be built substantially as designed. Artform will not be obligated by or liable for use of this design with markups as part of any builder agreement. While we attempt to accommodate where possible and reasonable, and where the changes do not denigrate our design, any and all changes to Drawings must be approved in writing by Artform. It is recommended that you have your Drawing updated by Artform prior to attaching any Drawing to any builder agreement. Artform shall not be responsible for the misuse of or unauthorized alterations to any of its Drawings.



Width 64.00 FT

Depth 37.00 FT

Height 29.67 FT

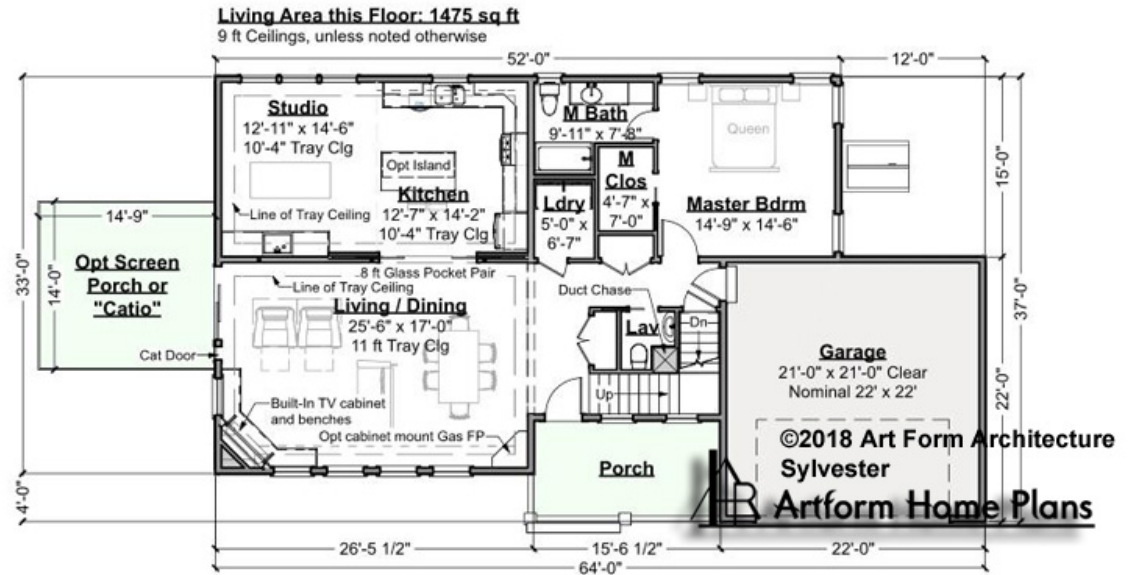
LIVING AREA		BEDROOMS		BATHROOMS	
	2256 FT		3		3.5
Main	2256 FT	Main	3	Main	3.5
Future	0 FT	Future	0	Future	0
2 nd Unit	0 FT	2 nd Unit	0	2 nd Unit	0



SYLVESTER - 1ST FLOOR

869.124

Some features shown are optional. Your Purchase & Sale Agreement governs, whether items are labeled "optional" in this document or not.



CRS 869.124 Sylvester

CLG HT SHOWN 9'-0" CLG HT POSSIBLE 8'-0"

* Major Change Fee, see website plan page for cost

F1 LIVING AREA	1475 ^{FT}	F1 BEDROOMS	1	F1 BATHROOMS	1.5
Main	1475.00 ^{FT}	Main	1.00	Main	1.50
Future	0.00 ^{FT}	Future	0.00	Future	0.00
2 nd Unit	0.00 ^{FT}	2 nd Unit	0.00	2 nd Unit	0.00



SYLVESTER - 2ND FLOOR

869.124

Some features shown are optional. Your Purchase & Sale Agreement governs, whether items are labeled "optional" in this document or not.



CRS 869.124 Sylvester

CLG HT SHOWN 8'-0" CLG HT POSSIBLE 8'-0"

* Major Change Fee, see website plan page for cost

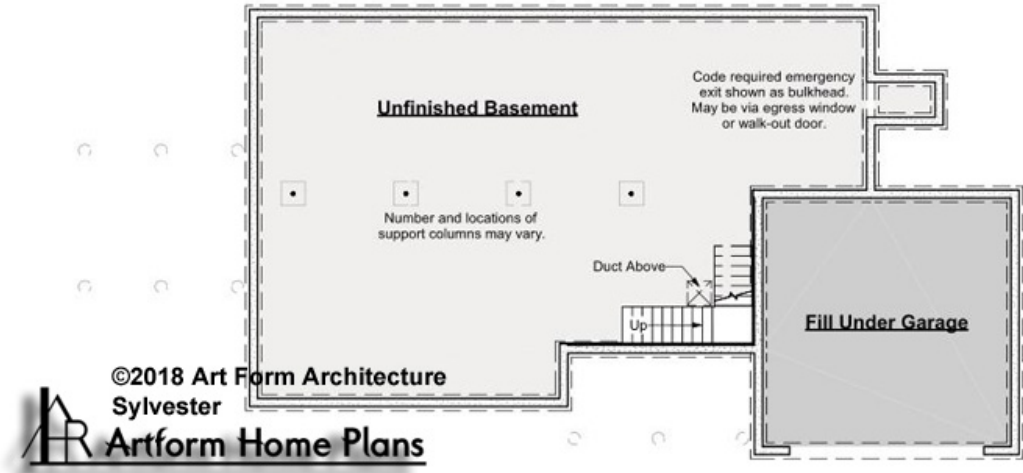
F1 LIVING AREA		F1 BEDROOMS		F1 BATHROOMS	
	781 ^{FT}		2		2
Main	781.00 ^{FT}	Main	2.00	Main	2.00
Future	0.00 ^{FT}	Future	0.00	Future	0.00
2 nd Unit	0.00 ^{FT}	2 nd Unit	0.00	2 nd Unit	0.00



SYLVESTER - BASEMENT

869.124

Some features shown are optional. Your Purchase & Sale Agreement governs, whether items are labeled "optional" in this document or not.



CRS 869.124 Sylvester

CLG HT SHOWN 7'-8" CLG HT POSSIBLE 9'-0"

* Major Change Fee, see website plan page for cost

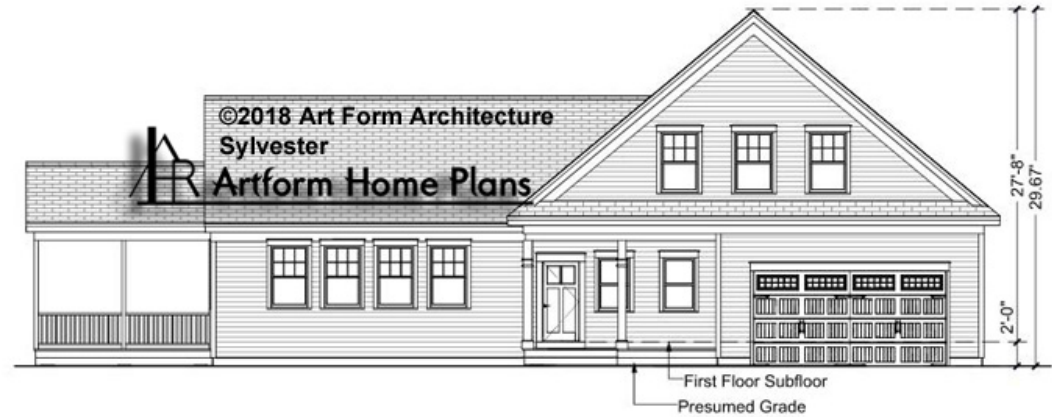
F1 LIVING AREA		F1 BEDROOMS		F1 BATHROOMS	
	0 FT		0		0
Main	0.00 FT	Main	0.00	Main	0.00
Future	0.00 FT	Future	0.00	Future	0.00
2 nd Unit	0.00 FT	2 nd Unit	0.00	2 nd Unit	0.00



SYLVESTER - FRONT ELEVATION

869.124

Some features shown are optional. Your Purchase & Sale Agreement governs, whether items are labeled "optional" in this document or not.



CRS 869.124 Sylvester



Art Form Architecture, LLC

SYLVESTER - RIGHT ELEVATION

869.124

—
Some features shown are optional. Your Purchase & Sale Agreement governs, whether items are labeled "optional" in this document or not.



CRS 869.124 Sylvester



Art Form Architecture, LLC

SYLVESTER - REAR ELEVATION

869.124

Some features shown are optional. Your Purchase & Sale Agreement governs, whether items are labeled "optional" in this document or not.



CRS 869.124 Sylvester



Art Form Architecture, LLC

SYLVESTER - LEFT ELEVATION

869.124

Some features shown are optional. Your Purchase & Sale Agreement governs, whether items are labeled "optional" in this document or not.



CRS 869.124 Sylvester