



SWEET PEEKABOO DUPLEX

418.224

In addition to our Terms and Conditions (the "Terms"), please be aware of the following:

Art Form Architecture, LLC ("Artform") requires that our Drawings be built substantially as designed. Artform will not be obligated by or liable for use of this design with markups as part of any builder agreement. While we attempt to accommodate where possible and reasonable, and where the changes do not denigrate our design, any and all changes to Drawings must be approved in writing by Artform. It is recommended that you have your Drawing updated by Artform prior to attaching any Drawing to any builder agreement. Artform shall not be responsible for the misuse of or unauthorized alterations to any of its Drawings.



Width 79.75 FT

Depth 38.25 FT

Height 26.75 FT

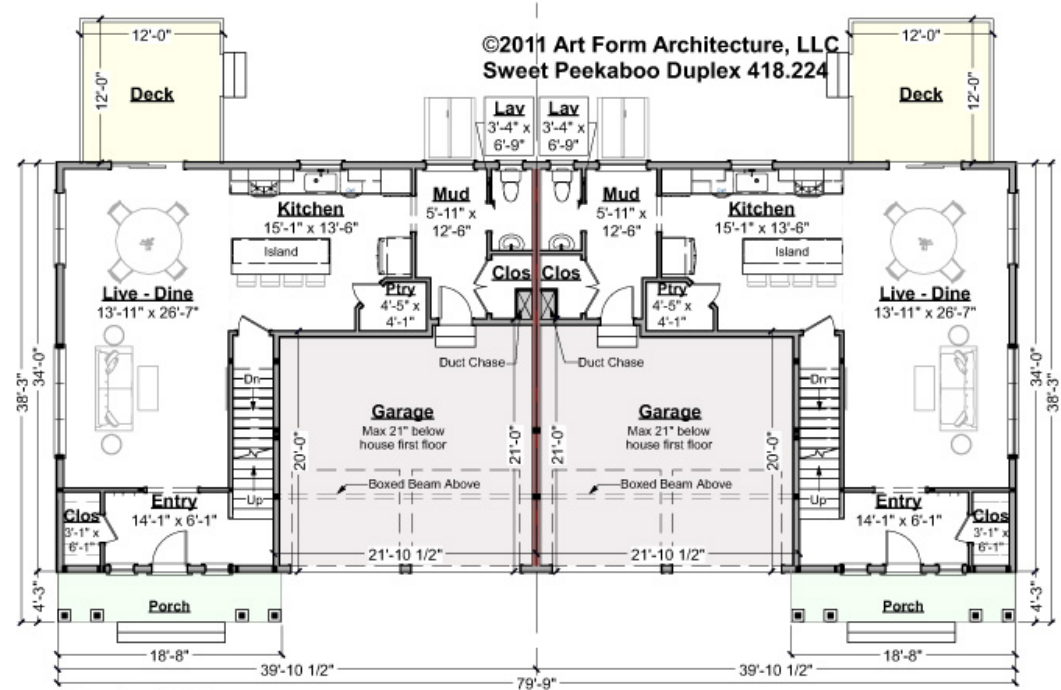
LIVING AREA		BEDROOMS		BATHROOMS	
	4345 FT		8		5
Main	2172 FT	Main	4	Main	2.5
Future	0 FT	Future	0	Future	0
2 nd Unit	2173 FT	2 nd Unit	4	2 nd Unit	2.5



SWEET PEEKABOO DUPLEX - 1ST FLOOR

418.224

Some features shown are optional. Your Purchase & Sale Agreement governs, whether items are labeled "optional" in this document or not.



Living Area this Floor:

Typical - 929 sq ft per unit (to the outside face of framing, for comparison to similar single family)

Condo - 863 sq ft per unit (to the inside face of framing, usual Condo ownership)

9 ft Ceilings

CLG HT SHOWN 9'-0"

CLG HT POSSIBLE 8'-0"

* Major Change Fee, see website plan page for cost

F1 LIVING AREA	1857 FT	F1 BEDROOMS	0	F1 BATHROOMS	1
Main	928.00 FT	Main		Main	0.50
Future	FT	Future		Future	
2 nd Unit	929.00 FT	2 nd Unit		2 nd Unit	0.50

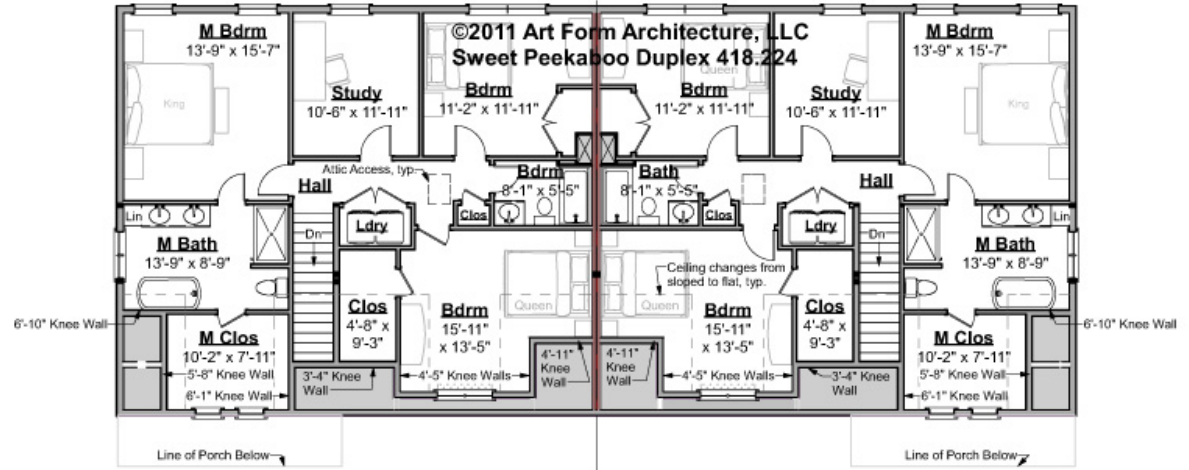


SWEET PEEKABOO DUPLEX - 2ND FLOOR

418.224

Most buyers of this plan would use the Study space as a Bedroom, which is why this plan is listed as a (4) Bedroom House. If you do intend to use this space as a Bedroom, we can add in the Closet for you at no additional charge.

Some features shown are optional. Your Purchase & Sale Agreement governs, whether items are labeled "optional" in this document or not.



Living Area this Floor:
Typical - 1244 sq ft per unit (to the outside face of framing, for comparison to similar single family)
Condo - 1178 sq ft per unit (to the inside face of framing, usual Condo ownership)
8 ft Ceilings

CLG HT SHOWN 8'-0" CLG HT POSSIBLE 9'-0"

** Major Change Fee, see website plan page for cost*

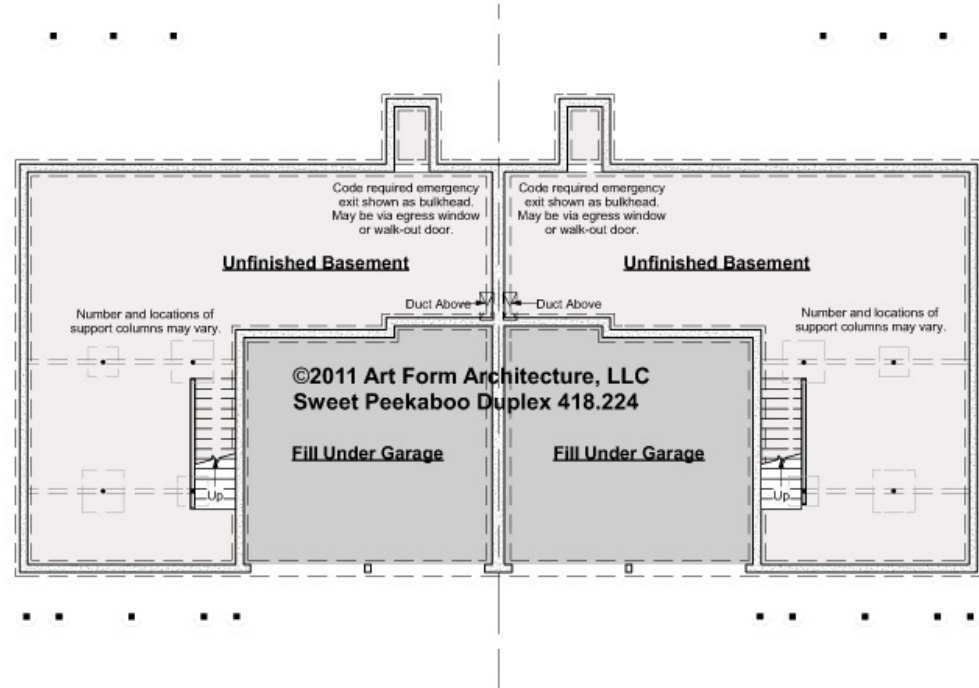
F1 LIVING AREA	2488 FT	F1 BEDROOMS	8	F1 BATHROOMS	4
Main	1244.00 FT	Main	4.00	Main	2.00
Future	FT	Future		Future	
2 nd Unit	1244.00 FT	2 nd Unit	4.00	2 nd Unit	2.00



SWEET PEEKABOO DUPLEX - BASEMENT

418.224

Some features shown are optional. Your Purchase & Sale Agreement governs, whether items are labeled "optional" in this document or not.



CLG HT SHOWN 7'-8"

CLG HT POSSIBLE 9'-0"

* Major Change Fee, see website plan page for cost

F1 LIVING AREA		F1 BEDROOMS		F1 BATHROOMS	
	0 FT		0		0
Main	0.00 FT	Main		Main	
Future	FT	Future		Future	
2 nd Unit	FT	2 nd Unit		2 nd Unit	

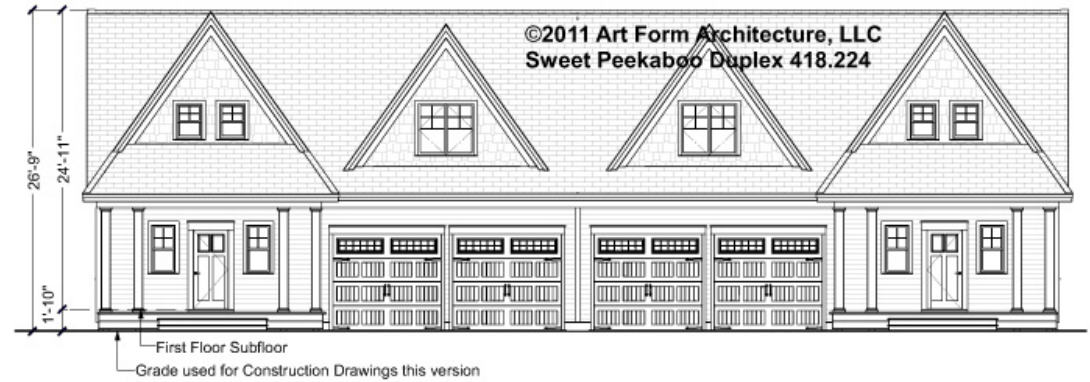


Art Form Architecture, LLC

SWEET PEEKABOO DUPLEX - FRONT ELEVATION

418.224

Some features shown are optional. Your Purchase & Sale Agreement governs, whether items are labeled "optional" in this document or not.





Art Form Architecture, LLC

SWEET PEEKABOO DUPLEX - RIGHT ELEVATION

418.224

—
Some features shown are optional. Your Purchase & Sale Agreement governs, whether items are labeled "optional" in this document or not.

©2011 Art Form Architecture, LLC
Sweet Peekaboo Duplex 418.224





Art Form Architecture, LLC

SWEET PEEKABOO DUPLEX - REAR ELEVATION

418.224

—
Some features shown are optional. Your Purchase & Sale Agreement governs, whether items are labeled "optional" in this document or not.





Art Form Architecture, LLC

SWEET PEEKABOO DUPLEX - LEFT ELEVATION

418.224

—
Some features shown are optional. Your Purchase & Sale Agreement governs, whether items are labeled "optional" in this document or not.





Art Form Architecture, LLC

SWEET PEEKABOO DUPLEX - REAR RENDER

418.224

—
Some features shown are optional. Your Purchase & Sale Agreement governs, whether items are labeled "optional" in this document or not.

