



STERLING OPAL

409.120.v3 SL

In addition to our Terms and Conditions (the "Terms"), please be aware of the following:

Art Form Architecture, LLC ("Artform") requires that our Drawings be built substantially as designed. Artform will not be obligated by or liable for use of this design with markups as part of any builder agreement. While we attempt to accommodate where possible and reasonable, and where the changes do not denigrate our design, any and all changes to Drawings must be approved in writing by Artform. It is recommended that you have your Drawing updated by Artform prior to attaching any Drawing to any builder agreement. Artform shall not be responsible for the misuse of or unauthorized alterations to any of its Drawings.



©2011-2017 Art Form Architecture
Sterling Opal
Artform Home Plans

Width 30.00 FT

Depth 34.25 FT

Height 28.25 FT

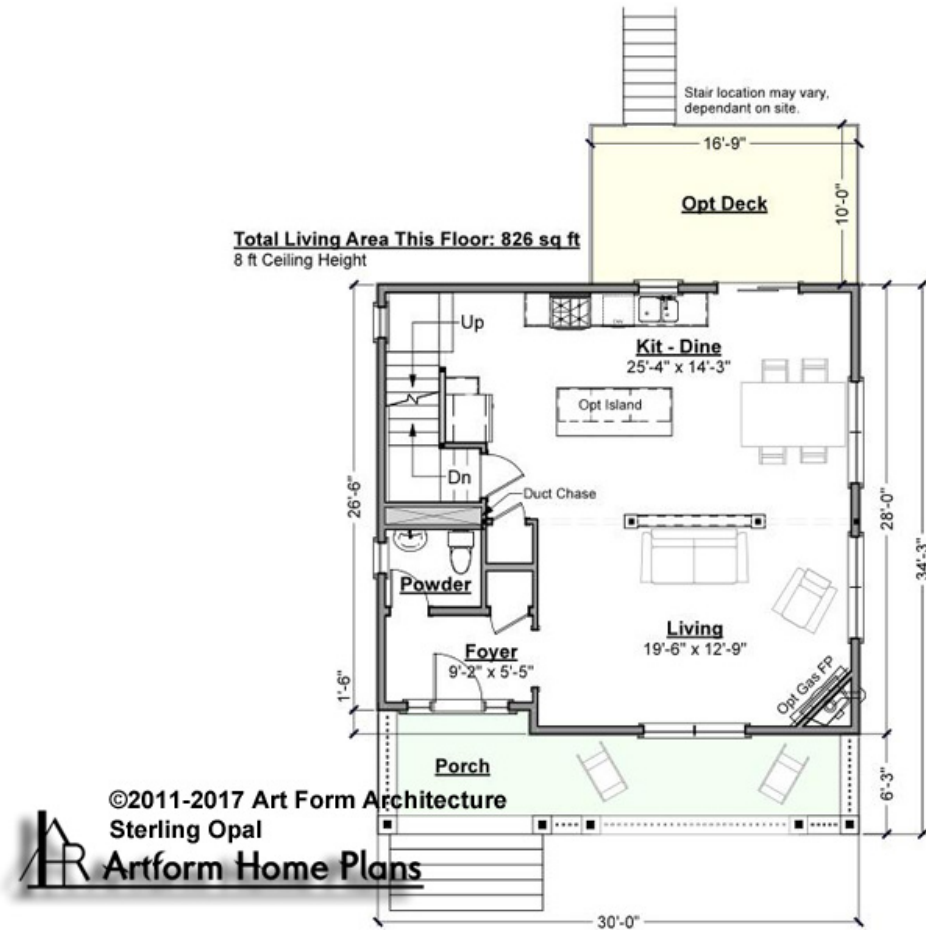
| LIVING AREA | | BEDROOMS | | BATHROOMS | |
|----------------------|---------|----------------------|---|----------------------|-----|
| Main | 1742 FT | Main | 3 | Main | 2.5 |
| Future | 0 FT | Future | 0 | Future | 0 |
| 2 nd Unit | 0 FT | 2 nd Unit | 0 | 2 nd Unit | 0 |



STERLING OPAL - 1ST FLOOR

409.120.v3 SL

Some features shown are optional. Your Purchase & Sale Agreement governs, whether items are labeled "optional" in this document or not.



©2011-2017 Art Form Architecture
Sterling Opal
Artform Home Plans

CLG HT SHOWN 8'-0" CLG HT POSSIBLE 8'-0"

* Major Change Fee, see website plan page for cost

| F1 LIVING AREA | 826 ^{FT} | F1 BEDROOMS | 0 | F1 BATHROOMS | 0.5 |
|----------------------|----------------------|----------------------|------|----------------------|------|
| Main | 826.00 ^{FT} | Main | 0.00 | Main | 0.50 |
| Future | 0.00 ^{FT} | Future | 0.00 | Future | 0.00 |
| 2 nd Unit | 0.00 ^{FT} | 2 nd Unit | 0.00 | 2 nd Unit | 0.00 |

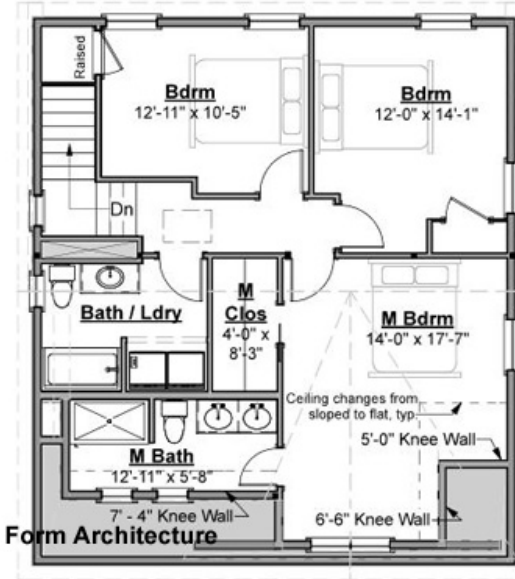


STERLING OPAL - 2ND FLOOR

409.120.v3 SL

Some features shown are optional. Your Purchase & Sale Agreement governs, whether items are labeled "optional" in this document or not.

Total Living Area This Floor: 916 sq ft
8 ft Ceiling Height



©2011-2017 Art Form Architecture
Sterling Opal
Artform Home Plans

CLG HT SHOWN 8'-0" CLG HT POSSIBLE 8'-0"

** Major Change Fee, see website plan page for cost*

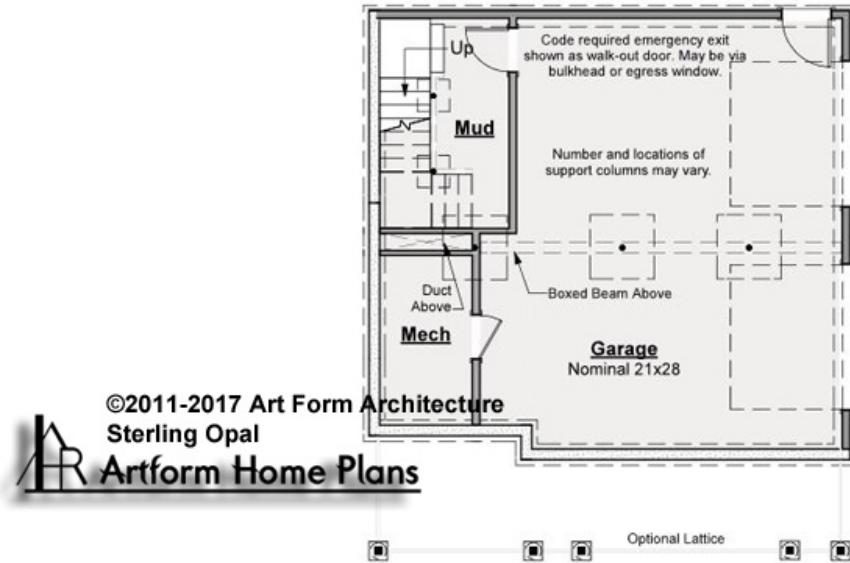
| F1 LIVING AREA | | F1 BEDROOMS | | F1 BATHROOMS | |
|----------------------|----------------------|----------------------|------|----------------------|------|
| | 916 ^{FT} | | 3 | | 2 |
| Main | 916.00 ^{FT} | Main | 3.00 | Main | 2.00 |
| Future | 0.00 ^{FT} | Future | 0.00 | Future | 0.00 |
| 2 nd Unit | 0.00 ^{FT} | 2 nd Unit | 0.00 | 2 nd Unit | 0.00 |



STERLING OPAL - BASEMENT

409.120.v3 SL

Some features shown are optional. Your Purchase & Sale Agreement governs, whether items are labeled "optional" in this document or not.



CLG HT SHOWN 7'-8" CLG HT POSSIBLE 7'-8"

* Major Change Fee, see website plan page for cost

| F1 LIVING AREA | | F1 BEDROOMS | | F1 BATHROOMS | |
|----------------------|---------|----------------------|------|----------------------|------|
| 0 FT | | 0 | | 0 | |
| Main | 0.00 FT | Main | 0.00 | Main | 0.00 |
| Future | 0.00 FT | Future | 0.00 | Future | 0.00 |
| 2 nd Unit | 0.00 FT | 2 nd Unit | 0.00 | 2 nd Unit | 0.00 |

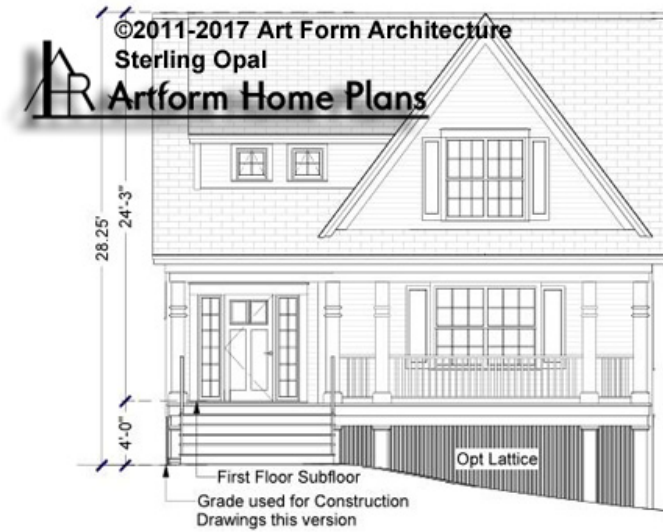


Art Form Architecture, LLC

STERLING OPAL - FRONT ELEVATION

409.120.v3 SL

Some features shown are optional. Your Purchase & Sale Agreement governs, whether items are labeled "optional" in this document or not.

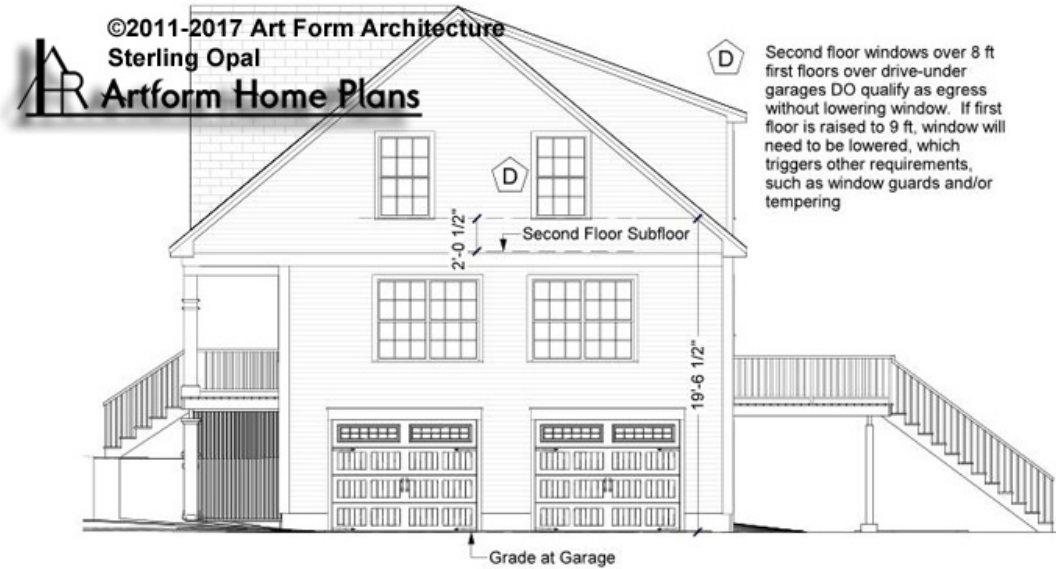




Art Form Architecture, LLC

STERLING OPAL - RIGHT ELEVATION 409.120.v3 SL

Some features shown are optional. Your Purchase & Sale Agreement governs, whether items are labeled "optional" in this document or not.



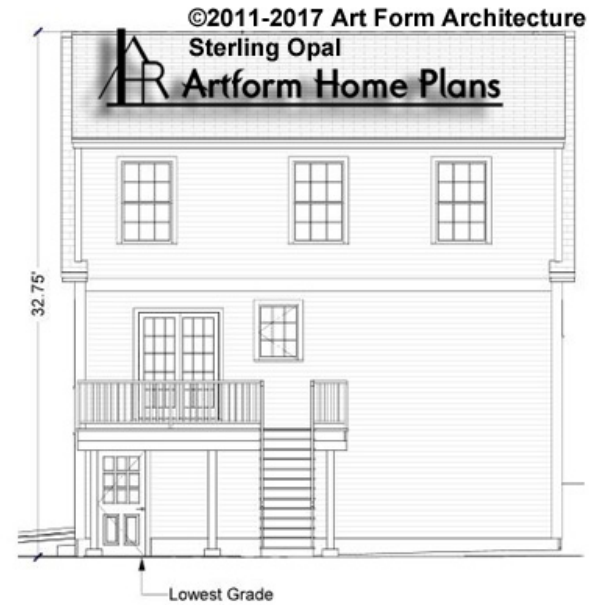


Art Form Architecture, LLC

STERLING OPAL - REAR ELEVATION

409.120.v3 SL

Some features shown are optional. Your Purchase & Sale Agreement governs, whether items are labeled "optional" in this document or not.





Art Form Architecture, LLC

STERLING OPAL - LEFT ELEVATION

409.120.v3 SL

Some features shown are optional. Your Purchase & Sale Agreement governs, whether items are labeled "optional" in this document or not.

