



# STEPPEHAUS

354.500 ER

In addition to our Terms and Conditions (the "Terms"), please be aware of the following:

Art Form Architecture, LLC ("Artform") requires that our Drawings be built substantially as designed. Artform will not be obligated by or liable for use of this design with markups as part of any builder agreement. While we attempt to accommodate where possible and reasonable, and where the changes do not denigrate our design, any and all changes to Drawings must be approved in writing by Artform. It is recommended that you have your Drawing updated by Artform prior to attaching any Drawing to any builder agreement. Artform shall not be responsible for the misuse of or unauthorized alterations to any of its Drawings.



Width 44.00 FT

Depth 34.50 FT

Height 33.00 FT

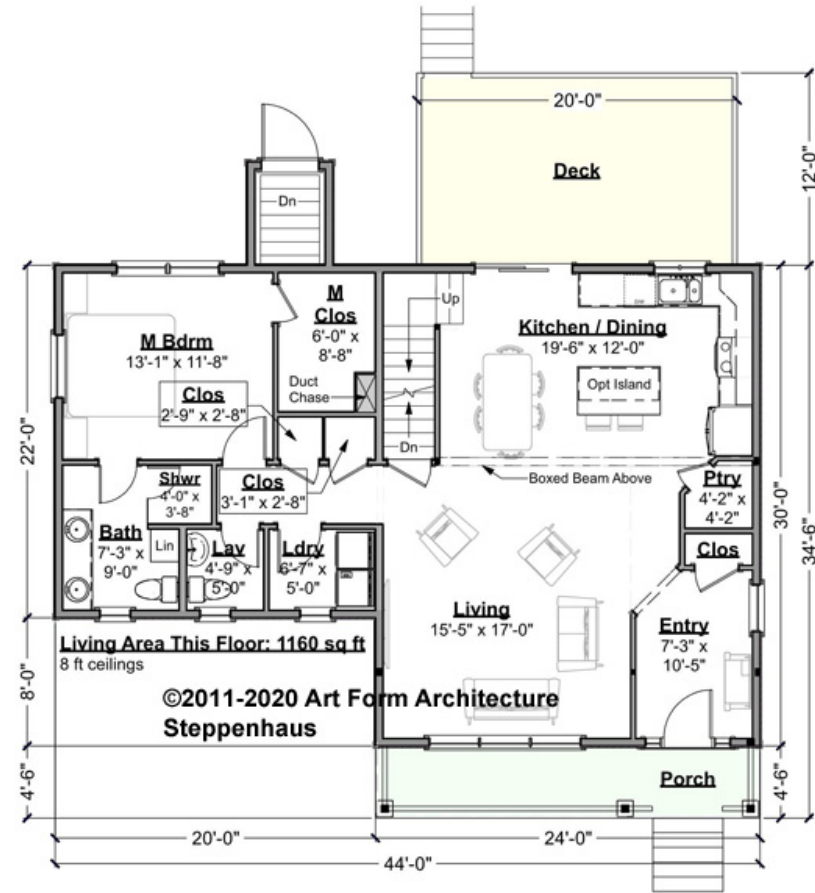
LIVING AREA		BEDROOMS		BATHROOMS	
	2110 FT		4		2.5
Main	1880 FT	Main	3	Main	2.5
Future	230 FT	Future	1	Future	0
2 <sup>nd</sup> Unit	0 FT	2 <sup>nd</sup> Unit	0	2 <sup>nd</sup> Unit	0



# STEPPENHAUS - 1<sup>ST</sup> FLOOR

## 354.500 ER

Some features shown are optional. Your Purchase & Sale Agreement governs, whether items are labeled "optional" in this document or not.



CLG HT SHOWN 8'-0"      CLG HT POSSIBLE 9'-0"

\* Major Change Fee, see website plan page for cost

F1 LIVING AREA	1160 <sup>FT</sup>	F1 BEDROOMS	1	F1 BATHROOMS	1.5
Main	1160.00 <sup>FT</sup>	Main	1.00	Main	1.50
Future	0.00 <sup>FT</sup>	Future	0.00	Future	0.00
2 <sup>nd</sup> Unit	0.00 <sup>FT</sup>	2 <sup>nd</sup> Unit	0.00	2 <sup>nd</sup> Unit	0.00



## STEPPENHAUS - 1<sup>ST</sup> FLOOR

354.500 ER

—  
Some features shown are optional. Your Purchase & Sale Agreement governs, whether items are labeled "optional" in this document or not.



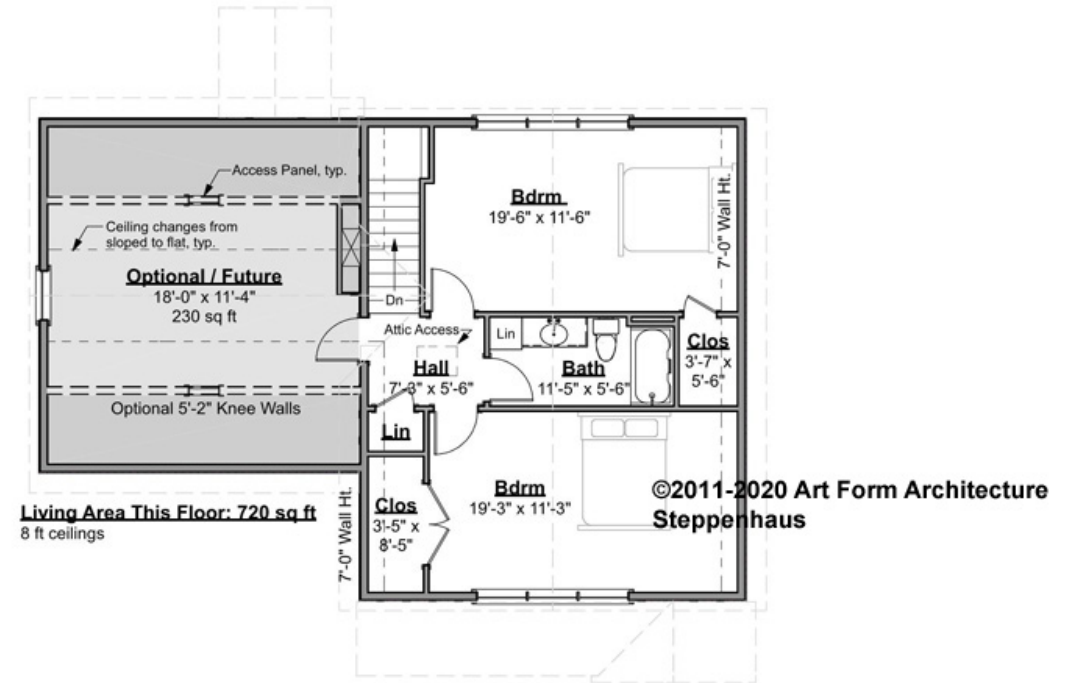
Various Interior Views - Additional Image



# STEPPENHAUS - 2<sup>ND</sup> FLOOR

## 354.500 ER

Some features shown are optional. Your Purchase & Sale Agreement governs, whether items are labeled "optional" in this document or not.



CLG HT SHOWN 8'-0" CLG HT POSSIBLE 9'-0"

\* Major Change Fee, see website plan page for cost

F1 LIVING AREA	950 <sup>FT</sup>	F1 BEDROOMS	3	F1 BATHROOMS	1
Main	720.00 <sup>FT</sup>	Main	2.00	Main	1.00
Future	230.00 <sup>FT</sup>	Future	1.00	Future	0.00
2 <sup>nd</sup> Unit	0.00 <sup>FT</sup>	2 <sup>nd</sup> Unit	0.00	2 <sup>nd</sup> Unit	0.00

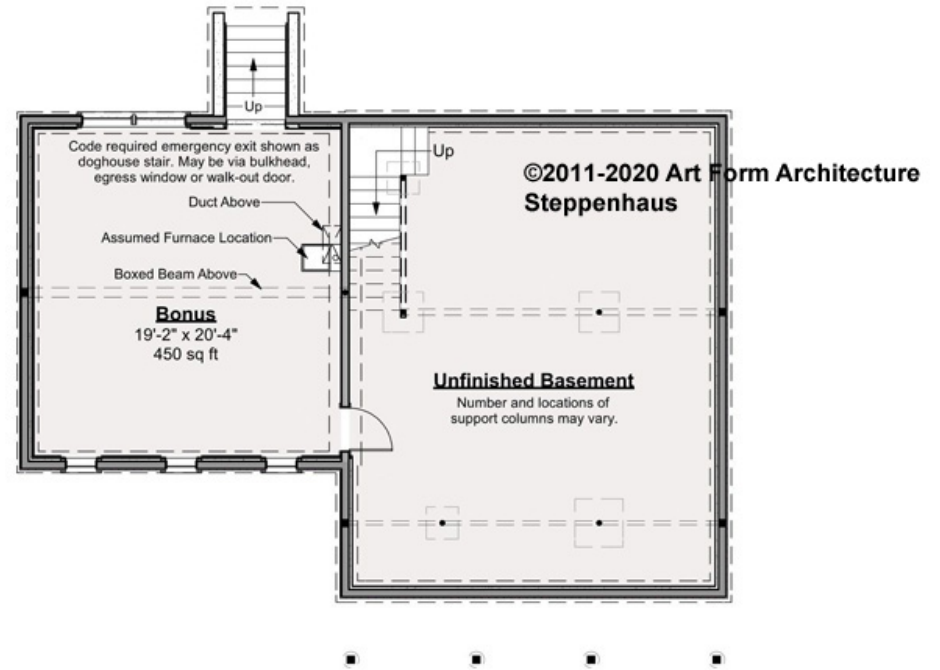


# STEPPEHAUS - BASEMENT

## 354.500 ER

"bonus" area shown is not included in our "Future" data, because everybody knows you can a basement, and we don't want it throwing Search.

Some features shown are optional. Your Purchase & Sale Agreement governs, whether items are labeled "optional" in this document or not.



CLG HT SHOWN 7'-8"      CLG HT POSSIBLE 9'-0"

\* Major Change Fee, see website plan page for cost

F1 LIVING AREA		F1 BEDROOMS		F1 BATHROOMS	
	0 FT		0		0
Main	0.00 FT	Main	0.00	Main	0.00
Future	0.00 FT	Future	0.00	Future	0.00
2 <sup>nd</sup> Unit	0.00 FT	2 <sup>nd</sup> Unit	0.00	2 <sup>nd</sup> Unit	0.00





Art Form Architecture, LLC

## STEPPEHAUS - FRONT ELEVATION

### 354.500 ER

Some features shown are optional. Your Purchase & Sale Agreement governs, whether items are labeled "optional" in this document or not.



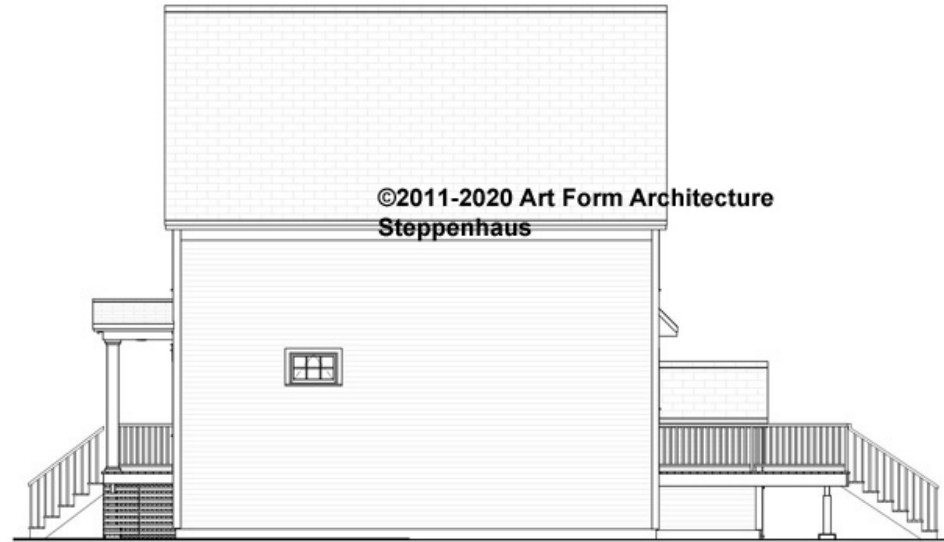


Art Form Architecture, LLC

## STEPHENHAUS - RIGHT ELEVATION

### 354.500 ER

Some features shown are optional. Your Purchase & Sale Agreement governs, whether items are labeled "optional" in this document or not.





Art Form Architecture, LLC

## STEPPENHAUS - REAR ELEVATION

### 354.500 ER

Some features shown are optional. Your Purchase & Sale Agreement governs, whether items are labeled "optional" in this document or not.







Art Form Architecture, LLC

## STEPPENHAUS - LEFT ELEVATION

### 354.500 ER

Some features shown are optional. Your Purchase & Sale Agreement governs, whether items are labeled "optional" in this document or not.





Art Form Architecture, LLC

## STEPPENHAUS - REAR RENDER 354.500 ER

Some features shown are optional. Your Purchase & Sale Agreement governs, whether items are labeled "optional" in this document or not.

