



## STEPPENHAUS

354.122.v8 GL

In addition to our Terms and Conditions (the "Terms"), please be aware of the following:

Art Form Architecture, LLC ("Artform") requires that our Drawings be built substantially as designed. Artform will not be obligated by or liable for use of this design with markups as part of any builder agreement. While we attempt to accommodate where possible and reasonable, and where the changes do not denigrate our design, any and all changes to Drawings must be approved in writing by Artform. It is recommended that you have your Drawing updated by Artform prior to attaching any Drawing to any builder agreement. Artform shall not be responsible for the misuse of or unauthorized alterations to any of its Drawings.



Width 40.00 FT

Depth 34.50 FT

Height 30.84 FT

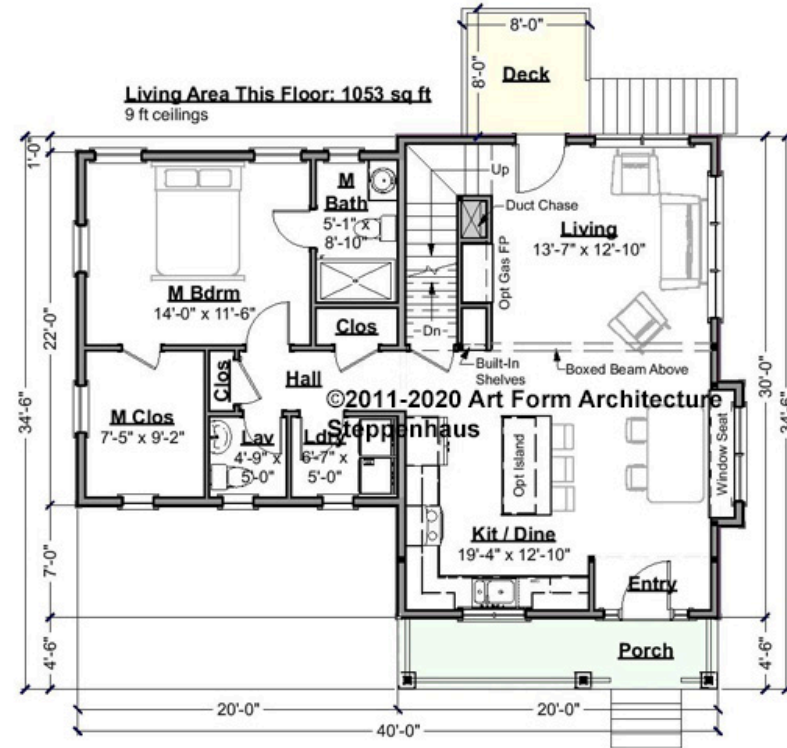
LIVING AREA		BEDROOMS		BATHROOMS	
	1900 FT		4		2.5
Main	1653 FT	Main	3	Main	2.5
Future	247 FT	Future	1	Future	0
2 <sup>nd</sup> Unit	0 FT	2 <sup>nd</sup> Unit	0	2 <sup>nd</sup> Unit	0



# STEPPENHAUS - 1<sup>ST</sup> FLOOR

## 354.122.v8 GL

Some features shown are optional. Your Purchase & Sale Agreement governs, whether items are labeled "optional" in this document or not.



CLG HT SHOWN 9'-0"    CLG HT POSSIBLE 8'-0"

\* Major Change Fee, see website plan page for cost

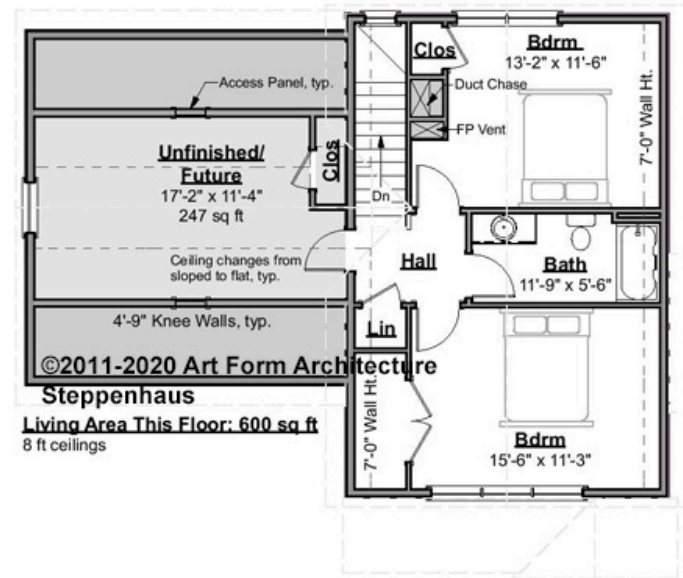
F1 LIVING AREA	1053 FT	F1 BEDROOMS	1	F1 BATHROOMS	1.5
Main	1053.00 FT	Main	1.00	Main	1.50
Future	0.00 FT	Future	0.00	Future	0.00
2 <sup>nd</sup> Unit	0.00 FT	2 <sup>nd</sup> Unit	0.00	2 <sup>nd</sup> Unit	0.00



# STEPPENHAUS - 2<sup>ND</sup> FLOOR

354.122.v8 GL

Some features shown are optional. Your Purchase & Sale Agreement governs, whether items are labeled "optional" in this document or not.



CLG HT SHOWN 8'-0"    CLG HT POSSIBLE 8'-0"

\* Major Change Fee, see website plan page for cost

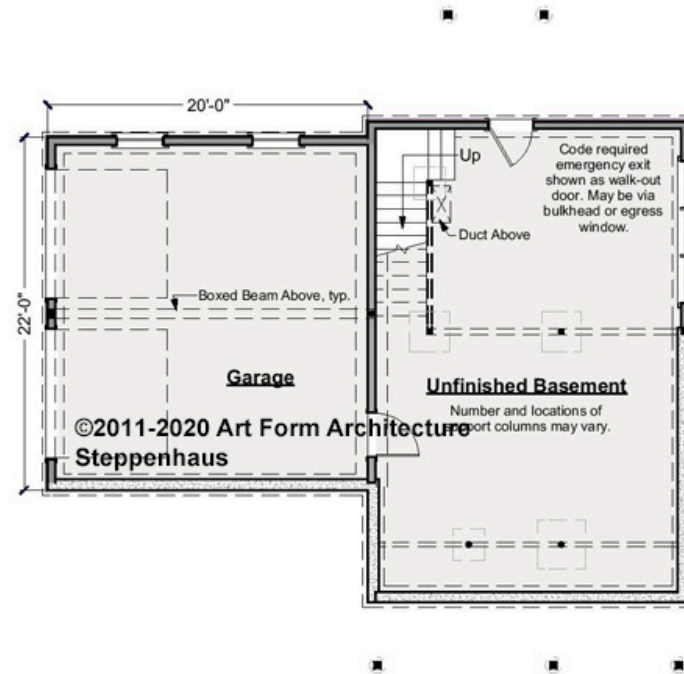
F1 LIVING AREA	847 <sup>FT</sup>	F1 BEDROOMS	3	F1 BATHROOMS	1
Main	600.00 <sup>FT</sup>	Main	2.00	Main	1.00
Future	247.00 <sup>FT</sup>	Future	1.00	Future	0.00
2 <sup>nd</sup> Unit	0.00 <sup>FT</sup>	2 <sup>nd</sup> Unit	0.00	2 <sup>nd</sup> Unit	0.00



# STEPPEHAUS - BASEMENT

354.122.v8 GL

Some features shown are optional. Your Purchase & Sale Agreement governs, whether items are labeled "optional" in this document or not.



CLG HT SHOWN 7'-8"      CLG HT POSSIBLE 9'-0"

\* Major Change Fee, see website plan page for cost

F1 LIVING AREA		F1 BEDROOMS		F1 BATHROOMS	
	0 FT		0		0
Main	0.00 FT	Main	0.00	Main	0.00
Future	0.00 FT	Future	0.00	Future	0.00
2 <sup>nd</sup> Unit	0.00 FT	2 <sup>nd</sup> Unit	0.00	2 <sup>nd</sup> Unit	0.00

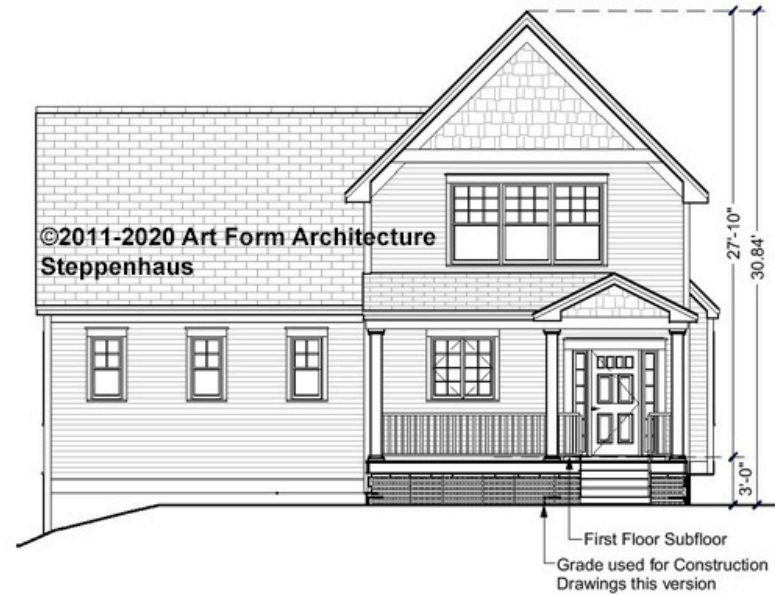


Art Form Architecture, LLC

## STEPPENHAUS - FRONT ELEVATION

### 354.122.v8 GL

Some features shown are optional. Your Purchase & Sale Agreement governs, whether items are labeled "optional" in this document or not.



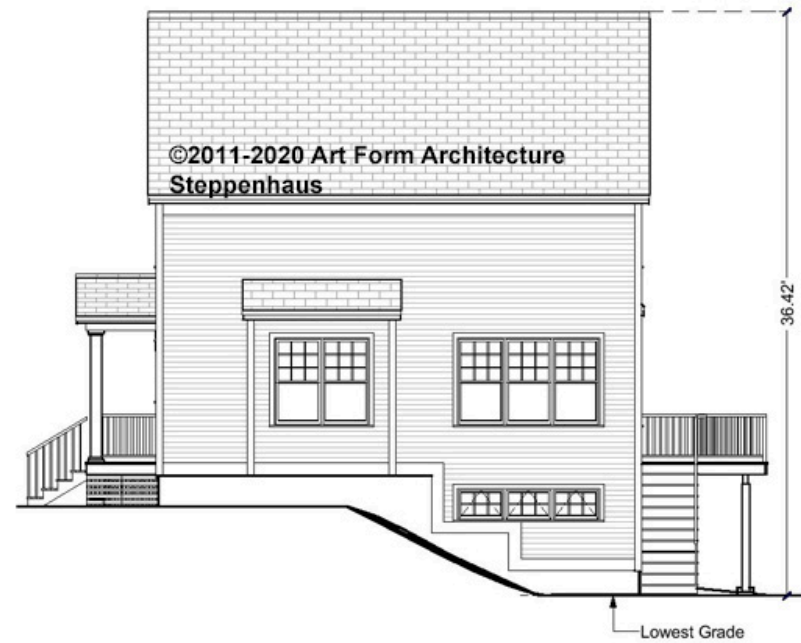


Art Form Architecture, LLC

## STEPPENHAUS - RIGHT ELEVATION

### 354.122.v8 GL

Some features shown are optional. Your Purchase & Sale Agreement governs, whether items are labeled "optional" in this document or not.





Art Form Architecture, LLC

## STEPPENHAUS - REAR ELEVATION

354.122.v8 GL

Some features shown are optional. Your Purchase & Sale Agreement governs, whether items are labeled "optional" in this document or not.





Art Form Architecture, LLC

## STEPHENHAUS - LEFT ELEVATION

354.122.v8 GL

Some features shown are optional. Your Purchase & Sale Agreement governs, whether items are labeled "optional" in this document or not.

