



SKYLAR

935.120.v2 GL

In addition to our Terms and Conditions (the "Terms"), please be aware of the following:

Art Form Architecture, LLC ("Artform") requires that our Drawings be built substantially as designed. Artform will not be obligated by or liable for use of this design with markups as part of any builder agreement. While we attempt to accommodate where possible and reasonable, and where the changes do not denigrate our design, any and all changes to Drawings must be approved in writing by Artform. It is recommended that you have your Drawing updated by Artform prior to attaching any Drawing to any builder agreement. Artform shall not be responsible for the misuse of or unauthorized alterations to any of its Drawings.



Width 52.00 FT

Depth 32.58 FT

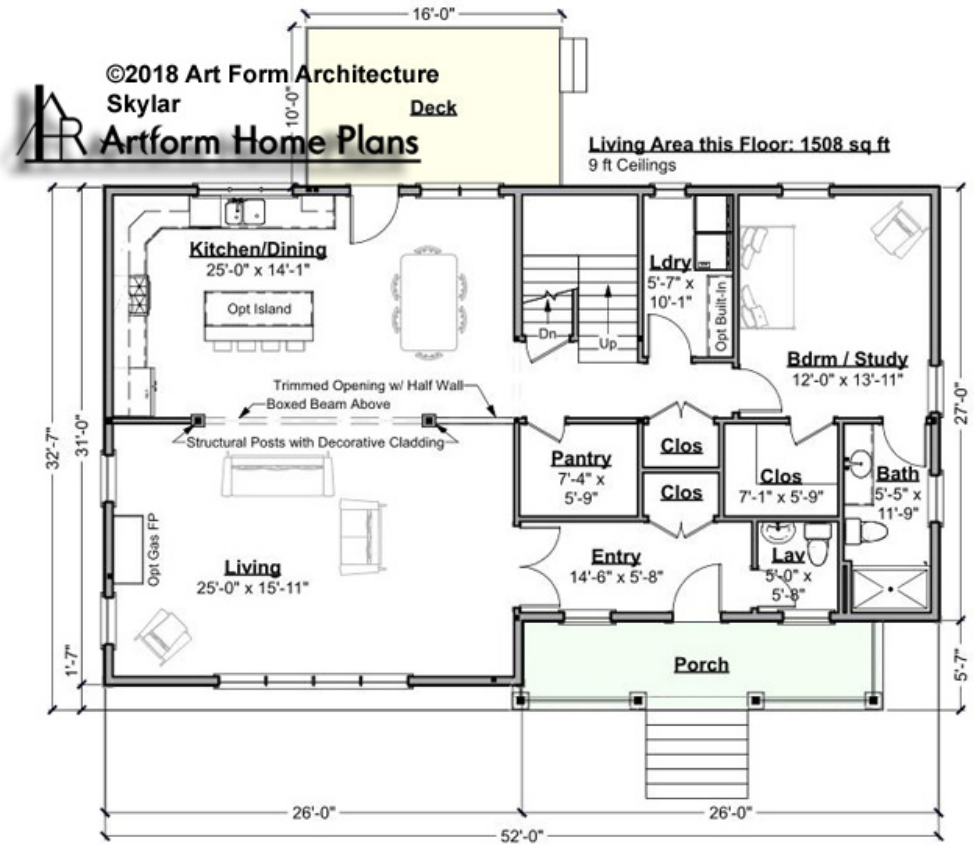
Height 32.66 FT

LIVING AREA		BEDROOMS		BATHROOMS	
	3006 FT		5		3.5
Main	3006 FT	Main	5	Main	3.5
Future	0 FT	Future	0	Future	0
2 nd Unit	0 FT	2 nd Unit	0	2 nd Unit	0



SKYLAR - 1ST FLOOR
935.120.v2 GL

Some features shown are optional. Your Purchase & Sale Agreement governs, whether items are labeled "optional" in this document or not.



CRS 935.120.v2 GL Skylar

CLG HT SHOWN 9'-0" CLG HT POSSIBLE 8'-0"

** Major Change Fee, see website plan page for cost*

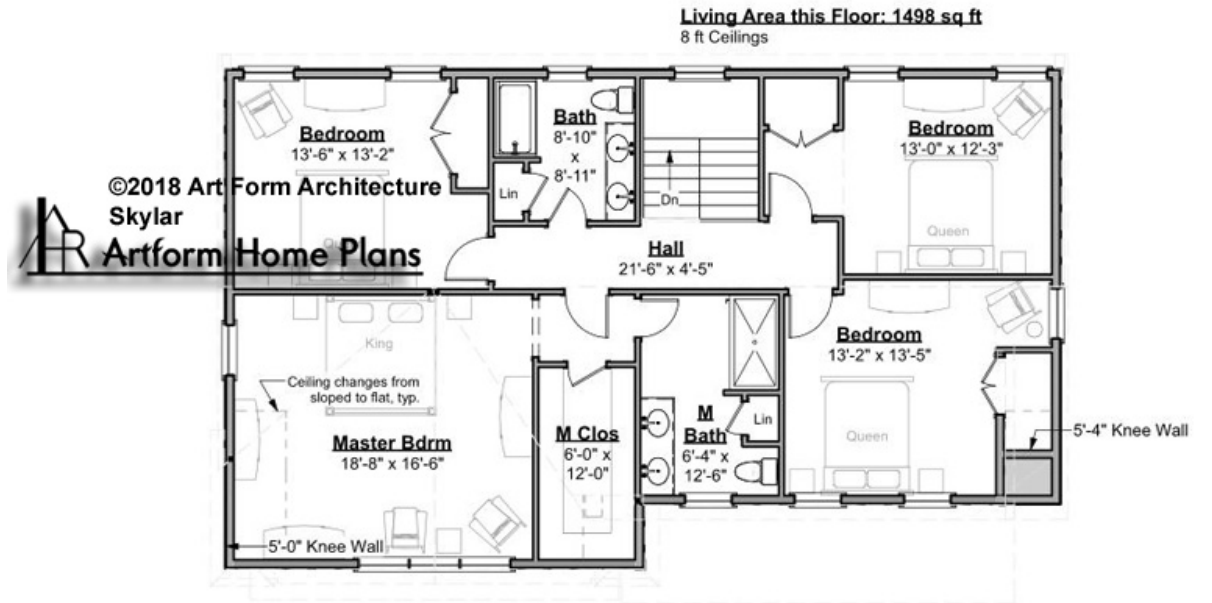
F1 LIVING AREA		F1 BEDROOMS		F1 BATHROOMS	
	1508 ^{FT}		1		1.5
Main	1508.00 ^{FT}	Main	1.00	Main	1.50
Future	0.00 ^{FT}	Future	0.00	Future	0.00
2 nd Unit	0.00 ^{FT}	2 nd Unit	0.00	2 nd Unit	0.00



SKYLAR - 2ND FLOOR

935.120.v2 GL

Some features shown are optional. Your Purchase & Sale Agreement governs, whether items are labeled "optional" in this document or not.



CRS 935.120.v2 GL Skylar

CLG HT SHOWN 8'-0" CLG HT POSSIBLE 8'-0"

* Major Change Fee, see website plan page for cost

F1 LIVING AREA		F1 BEDROOMS		F1 BATHROOMS	
	1498 ^{FT}		4		2
Main	1498.00 ^{FT}	Main	4.00	Main	2.00
Future	0.00 ^{FT}	Future	0.00	Future	0.00
2 nd Unit	0.00 ^{FT}	2 nd Unit	0.00	2 nd Unit	0.00

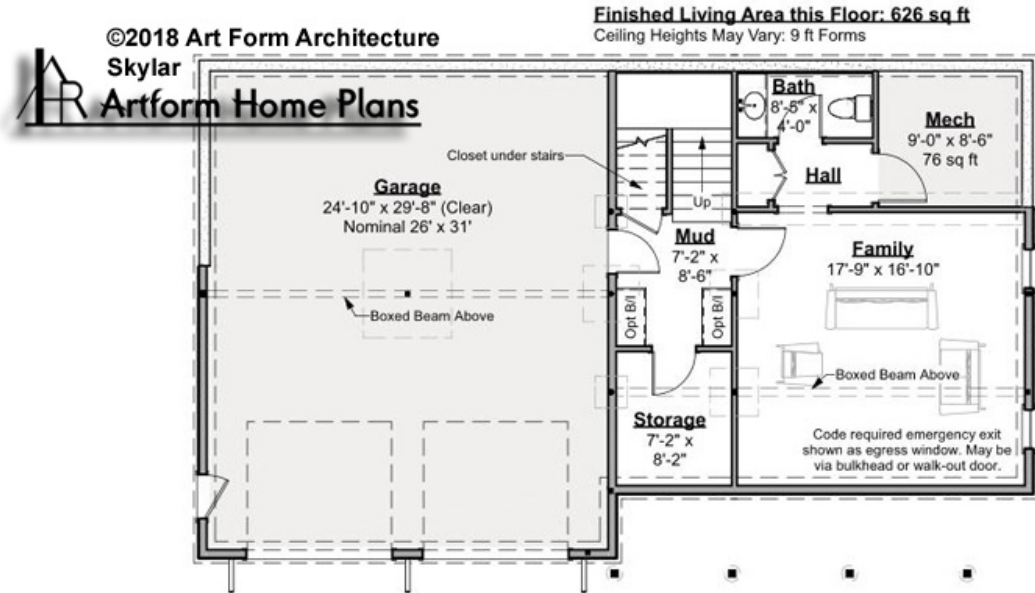


SKYLAR - BASEMENT

935.120.v2 GL

Note: finished basement area is NOT included in main or future Living Area, but IS shown on CDs. We do this so Search doesn't mislead - everyone knows you can finish a basement!

Some features shown are optional. Your Purchase & Sale Agreement governs, whether items are labeled "optional" in this document or not.



CRS 935.120.v2 GL Skylar

CLG HT SHOWN 9'-0" CLG HT POSSIBLE 7'-8"

* Major Change Fee, see website plan page for cost

F1 LIVING AREA		F1 BEDROOMS		F1 BATHROOMS	
	0 FT		0		0
Main	0.00 FT	Main	0.00	Main	0.00
Future	0.00 FT	Future	0.00	Future	0.00
2 nd Unit	0.00 FT	2 nd Unit	0.00	2 nd Unit	0.00



Art Form Architecture, LLC

SKYLAR - FRONT ELEVATION

935.120.v2 GL

Some features shown are optional. Your Purchase & Sale Agreement governs, whether items are labeled "optional" in this document or not.



CRS 935.120.v2 GL Skylar



Art Form Architecture, LLC

SKYLAR - RIGHT ELEVATION

935.120.v2 GL

Some features shown are optional. Your Purchase & Sale Agreement governs, whether items are labeled "optional" in this document or not.



CRS 935.120.v2 GL Skylar



Art Form Architecture, LLC

SKYLAR - REAR ELEVATION

935.120.v2 GL

Some features shown are optional. Your Purchase & Sale Agreement governs, whether items are labeled "optional" in this document or not.



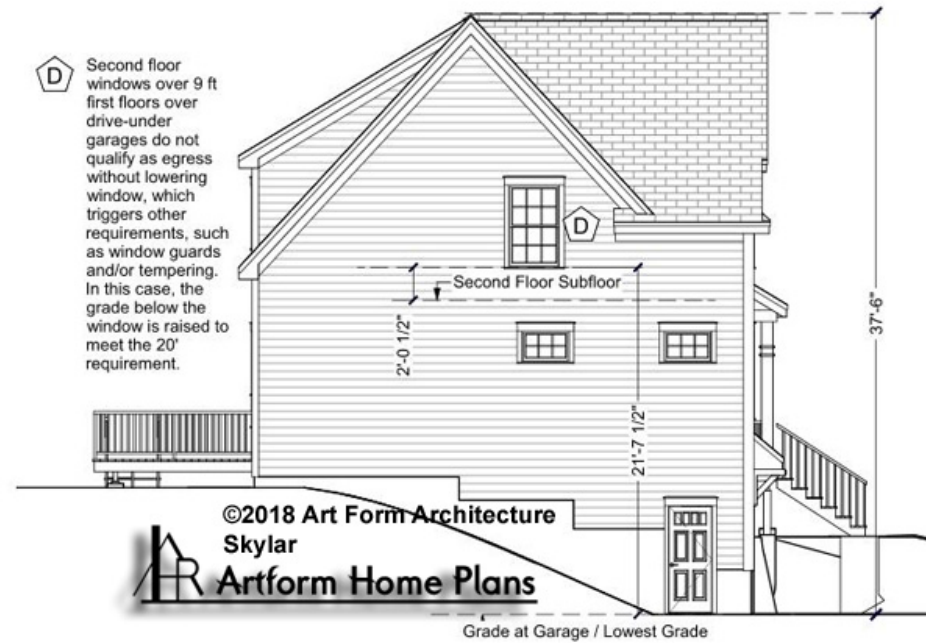
CRS 935.120.v2 GL Skylar



SKYLAR - LEFT ELEVATION

935.120.v2 GL

Some features shown are optional. Your Purchase & Sale Agreement governs, whether items are labeled "optional" in this document or not.



CRS 935.120.v2 GL Skylar