



## SKIPPER GRANDE

389.124.v8 EL

In addition to our Terms and Conditions (the "Terms"), please be aware of the following:

Art Form Architecture, LLC ("Artform") requires that our Drawings be built substantially as designed. Artform will not be obligated by or liable for use of this design with markups as part of any builder agreement. While we attempt to accommodate where possible and reasonable, and where the changes do not denigrate our design, any and all changes to Drawings must be approved in writing by Artform. It is recommended that you have your Drawing updated by Artform prior to attaching any Drawing to any builder agreement. Artform shall not be responsible for the misuse of or unauthorized alterations to any of its Drawings.



Width 71.00 FT

Depth 41.25 FT

Height 29.33 FT

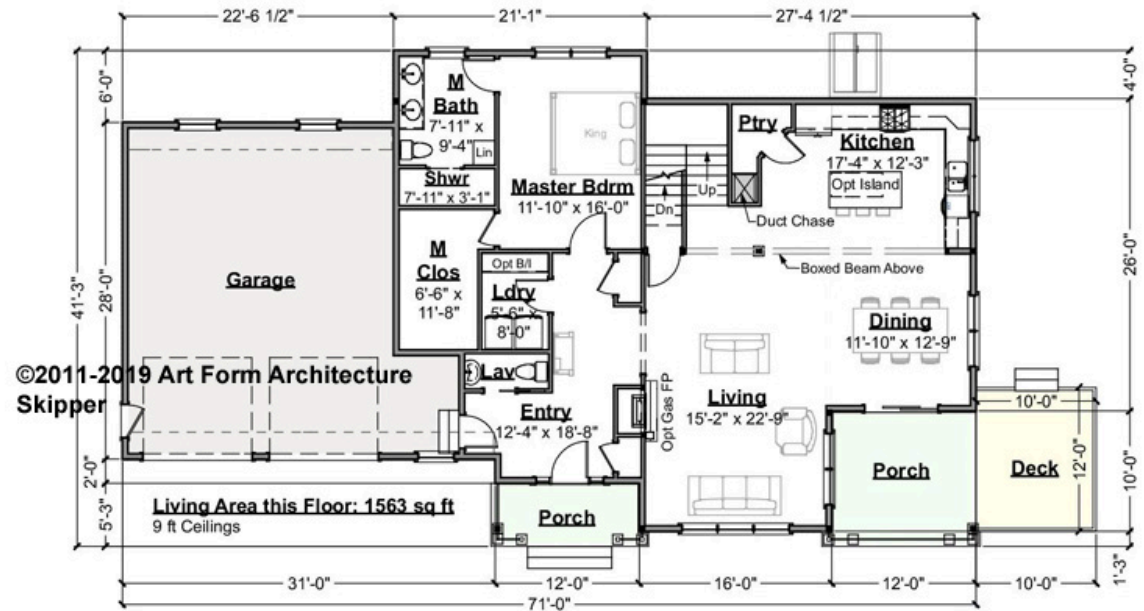
LIVING AREA		BEDROOMS		BATHROOMS	
	2519 FT		3		2.5
Main	2519 FT	Main	3	Main	2.5
Future	0 FT	Future	0	Future	0
2 <sup>nd</sup> Unit	0 FT	2 <sup>nd</sup> Unit	0	2 <sup>nd</sup> Unit	0



# SKIPPER GRANDE - 1<sup>ST</sup> FLOOR

389.124.v8 EL

Some features shown are optional. Your Purchase & Sale Agreement governs, whether items are labeled "optional" in this document or not.



CRS 389.124.v8 EL Skipper

CLG HT SHOWN 9'-0"    CLG HT POSSIBLE 8'-0"

\* Major Change Fee, see website plan page for cost

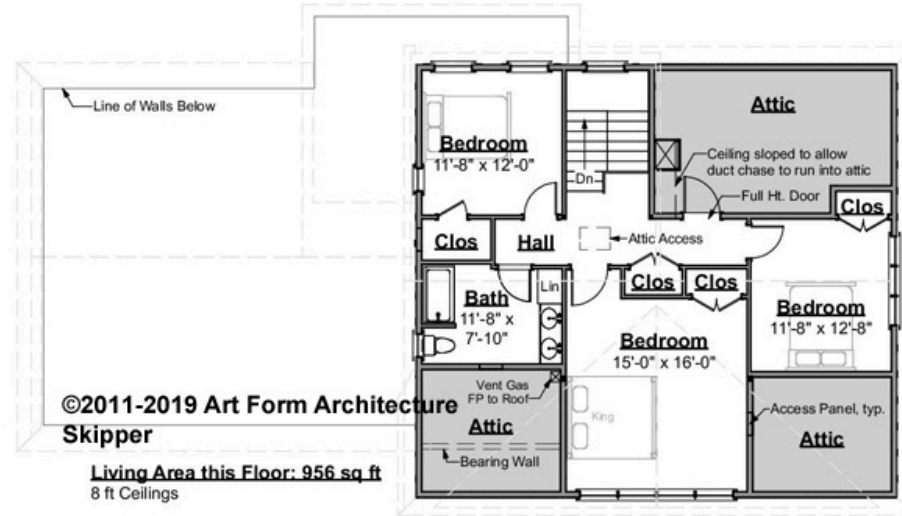
F1 LIVING AREA	1563 FT	F1 BEDROOMS	1	F1 BATHROOMS	1.5
Main	1563.00 FT	Main	1.00	Main	1.50
Future	0.00 FT	Future	0.00	Future	0.00
2 <sup>nd</sup> Unit	0.00 FT	2 <sup>nd</sup> Unit	0.00	2 <sup>nd</sup> Unit	0.00



# SKIPPER GRANDE - 2<sup>ND</sup> FLOOR

389.124.v8 EL

Some features shown are optional. Your Purchase & Sale Agreement governs, whether items are labeled "optional" in this document or not.



CRS 389.124.v8 EL Skipper

CLG HT SHOWN 8'-0"      CLG HT POSSIBLE 8'-0"

\* Major Change Fee, see website plan page for cost

F1 LIVING AREA		F1 BEDROOMS		F1 BATHROOMS	
	956 <sup>FT</sup>		2		1
Main	956.00 <sup>FT</sup>	Main	2.00	Main	1.00
Future	0.00 <sup>FT</sup>	Future	0.00	Future	0.00
2 <sup>nd</sup> Unit	0.00 <sup>FT</sup>	2 <sup>nd</sup> Unit	0.00	2 <sup>nd</sup> Unit	0.00

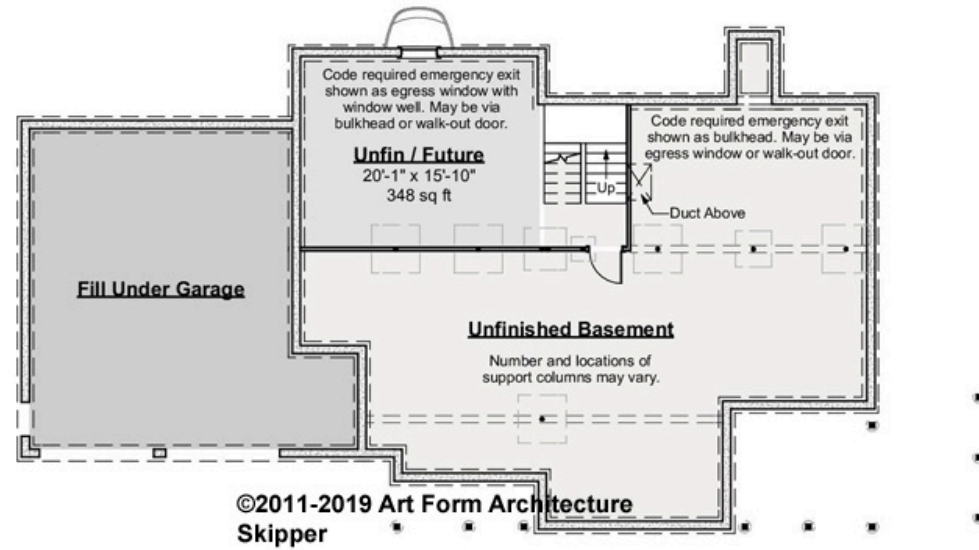


# SKIPPER GRANDE - BASEMENT

## 389.124.v8 EL

The construction drawings show this lower level as finished. We don't include that in our data chart so Search isn't misleading. Everybody knows you can finish a basement!

Some features shown are optional. Your Purchase & Sale Agreement governs, whether items are labeled "optional" in this document or not.



CRS 389.124.v8 EL Skipper

CLG HT SHOWN 7'-8"      CLG HT POSSIBLE 9'-0"

\* Major Change Fee, see website plan page for cost

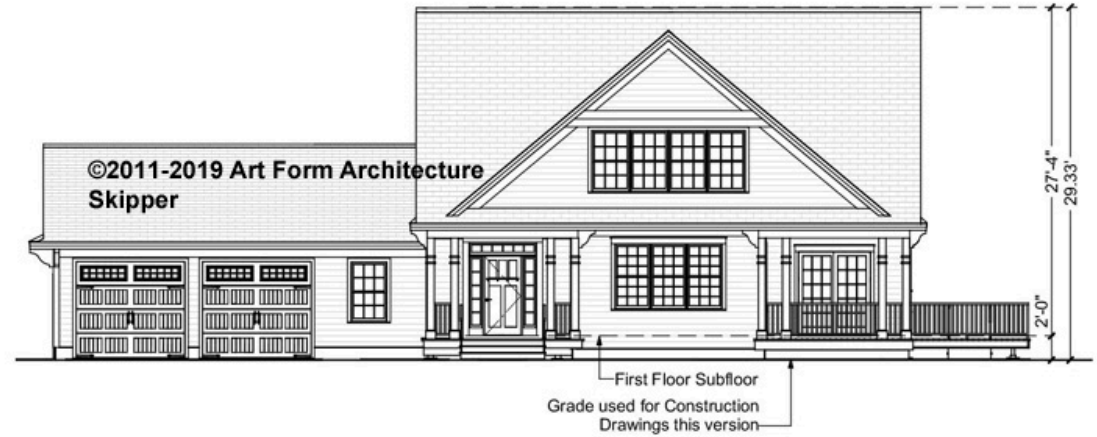
F1 LIVING AREA		F1 BEDROOMS		F1 BATHROOMS	
0	FT	0		0	
Main	0.00 FT	Main	0.00	Main	0.00
Future	FT	Future	0.00	Future	0.00
2 <sup>nd</sup> Unit	0.00 FT	2 <sup>nd</sup> Unit	0.00	2 <sup>nd</sup> Unit	0.00



## SKIPPER GRANDE - FRONT ELEVATION

389.124.v8 EL

Some features shown are optional. Your Purchase & Sale Agreement governs, whether items are labeled "optional" in this document or not.



CRS 389.124.v8 EL Skipper



Art Form Architecture, LLC

## SKIPPER GRANDE - RIGHT ELEVATION

389.124.v8 EL

—  
Some features shown are optional. Your Purchase & Sale Agreement governs, whether items are labeled "optional" in this document or not.



©2011-2019 Art Form Architecture  
Skipper

CRS 389.124.v8 EL Skipper



## SKIPPER GRANDE - REAR ELEVATION

### 389.124.v8 EL

Some features shown are optional. Your Purchase & Sale Agreement governs, whether items are labeled "optional" in this document or not.



CRS 389.124.v8 EL Skipper

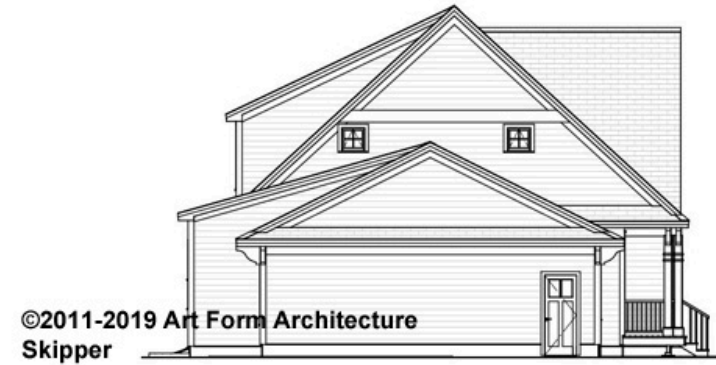


Art Form Architecture, LLC

## SKIPPER GRANDE - LEFT ELEVATION

### 389.124.v8 EL

Some features shown are optional. Your Purchase & Sale Agreement governs, whether items are labeled "optional" in this document or not.



CRS 389.124.v8 EL Skipper