



SKIPPER CLASSIC

389.124.v10 GL

In addition to our Terms and Conditions (the "Terms"), please be aware of the following:

Art Form Architecture, LLC ("Artform") requires that our Drawings be built substantially as designed. Artform will not be obligated by or liable for use of this design with markups as part of any builder agreement. While we attempt to accommodate where possible and reasonable, and where the changes do not denigrate our design, any and all changes to Drawings must be approved in writing by Artform. It is recommended that you have your Drawing updated by Artform prior to attaching any Drawing to any builder agreement. Artform shall not be responsible for the misuse of or unauthorized alterations to any of its Drawings.



Width 82.38 FT

Depth 51.50 FT

Height 29.92 FT

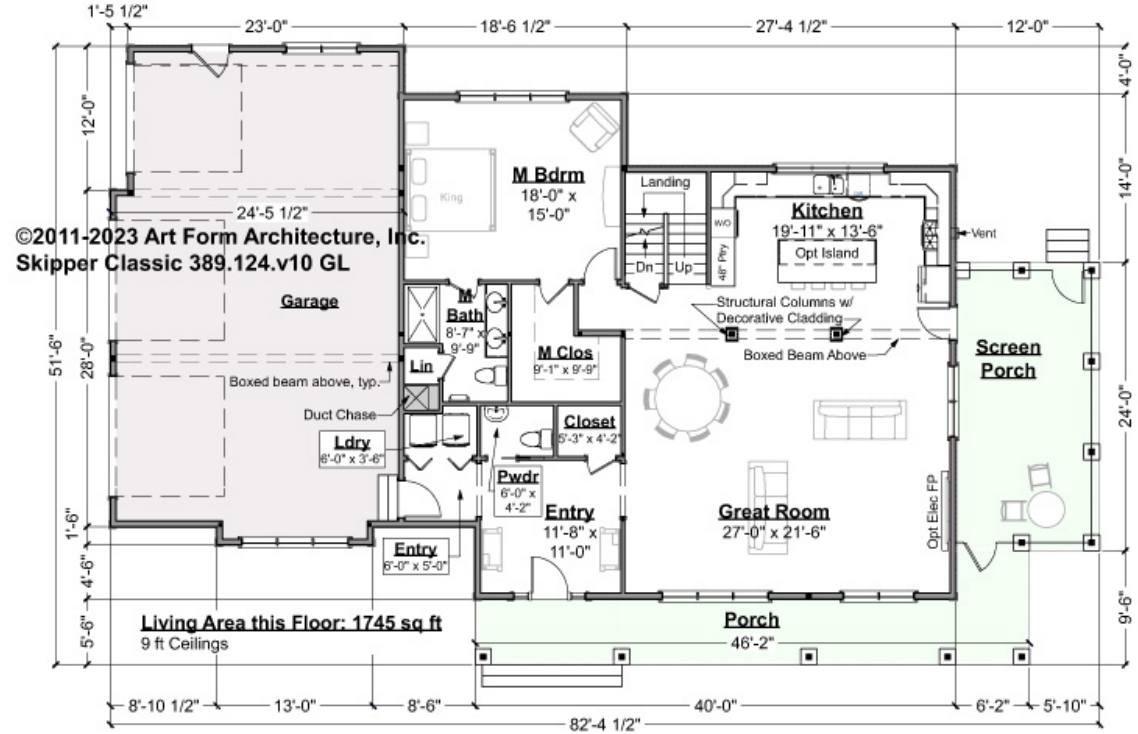
LIVING AREA		BEDROOMS		BATHROOMS	
	3680 FT		5		3.5
Main	3680 FT	Main	4	Main	3.5
Future	0 FT	Future	1	Future	0
2 nd Unit	0 FT	2 nd Unit	0	2 nd Unit	0



SKIPPER CLASSIC - 1ST FLOOR

389.124.v10 GL

Some features shown are optional. Your Purchase & Sale Agreement governs, whether items are labeled "optional" in this document or not.



CLG HT SHOWN 9'-0" CLG HT POSSIBLE 8'-0"

* Major Change Fee, see website plan page for cost

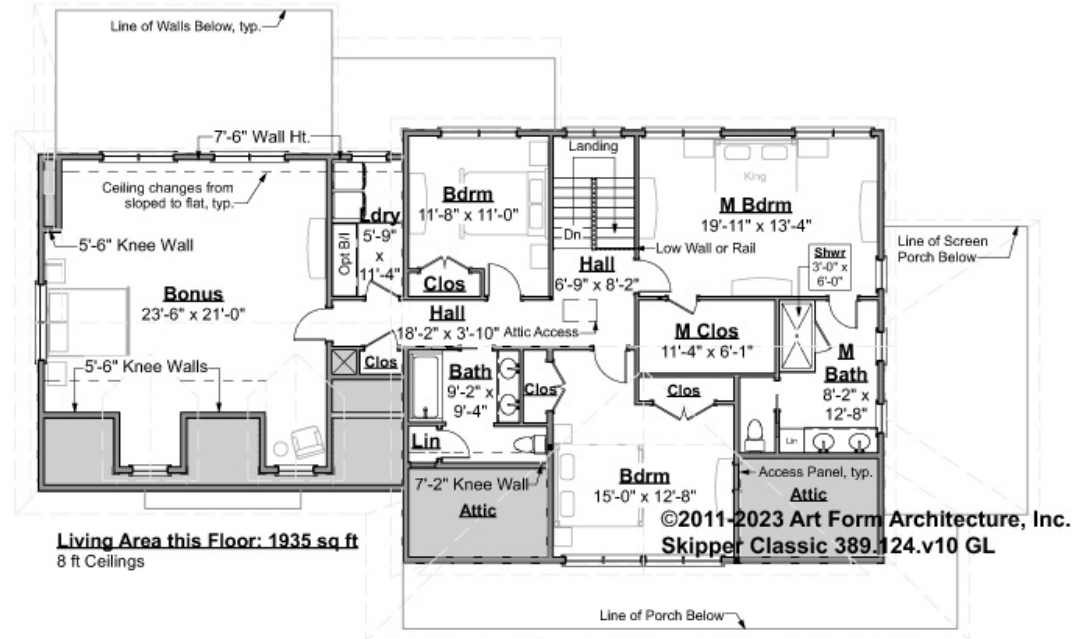
F1 LIVING AREA	1745 FT	F1 BEDROOMS	1	F1 BATHROOMS	1.5
Main	1745.00 FT	Main	1.00	Main	1.50
Future	FT	Future		Future	
2 nd Unit	FT	2 nd Unit		2 nd Unit	



SKIPPER CLASSIC - 2ND FLOOR

389.124.v10 GL

Some features shown are optional. Your Purchase & Sale Agreement governs, whether items are labeled "optional" in this document or not.



CLG HT SHOWN 8'-0"

CLG HT POSSIBLE 9'-0"

* Major Change Fee, see website plan page for cost

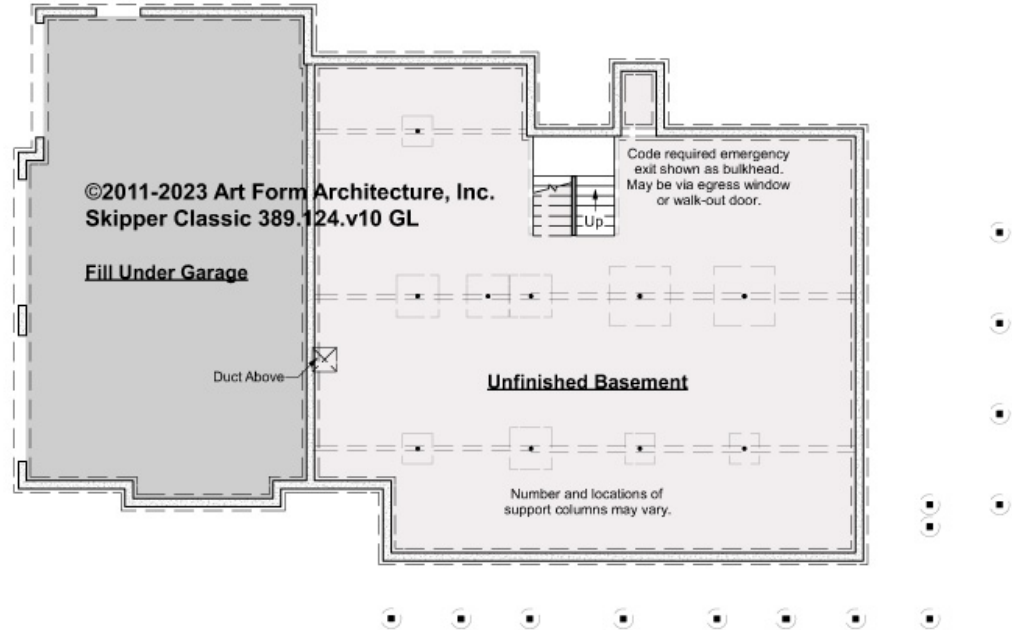
F1 LIVING AREA	1935 FT	F1 BEDROOMS	4	F1 BATHROOMS	2
Main	1935.00 FT	Main	3.00	Main	2.00
Future	FT	Future	1.00	Future	
2 nd Unit	FT	2 nd Unit		2 nd Unit	



SKIPPER CLASSIC - BASEMENT

389.124.v10 GL

Some features shown are optional. Your Purchase & Sale Agreement governs, whether items are labeled "optional" in this document or not.



CLG HT SHOWN 7'-8" CLG HT POSSIBLE 9'-0"

* Major Change Fee, see website plan page for cost

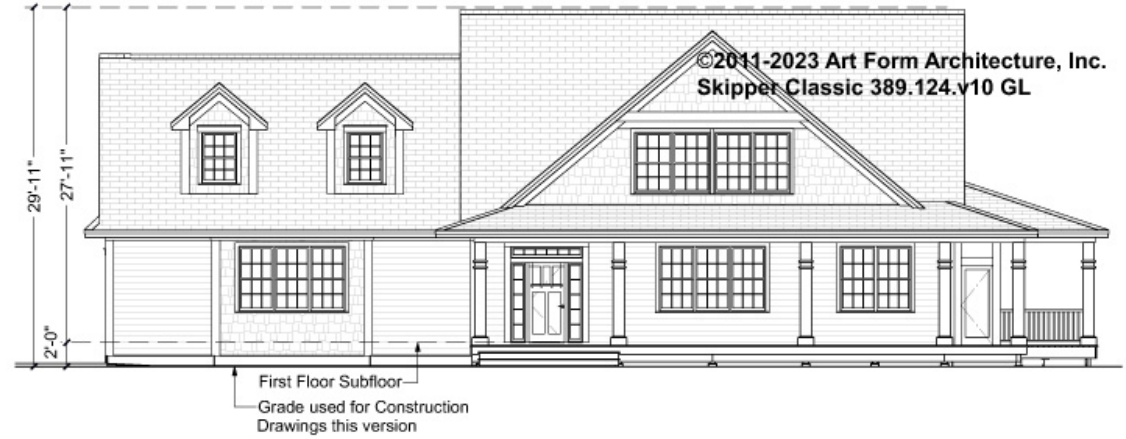
F1 LIVING AREA		0 FT	F1 BEDROOMS		0	F1 BATHROOMS		0
Main	FT		Main			Main		
Future	FT		Future			Future		
2 nd Unit	FT		2 nd Unit			2 nd Unit		



SKIPPER CLASSIC - FRONT ELEVATION

389.124.v10 GL

Some features shown are optional. Your Purchase & Sale Agreement governs, whether items are labeled "optional" in this document or not.





Art Form Architecture, LLC

SKIPPER CLASSIC - RIGHT ELEVATION

389.124.v10 GL

—
Some features shown are optional. Your Purchase & Sale Agreement governs, whether items are labeled "optional" in this document or not.





Art Form Architecture, LLC

SKIPPER CLASSIC - REAR ELEVATION

389.124.v10 GL

Some features shown are optional. Your Purchase & Sale Agreement governs, whether items are labeled "optional" in this document or not.





Art Form Architecture, LLC

SKIPPER CLASSIC - LEFT ELEVATION 389.124.v10 GL

Some features shown are optional. Your Purchase & Sale Agreement governs, whether items are labeled "optional" in this document or not.



©2011-2023 Art Form Architecture, Inc.
Skipper Classic 389.124.v10 GL



Art Form Architecture, LLC

SKIPPER CLASSIC - REAR RENDER

389.124.v10 GL

Some features shown are optional. Your Purchase & Sale Agreement governs, whether items are labeled "optional" in this document or not.

