



SHERLOCK CLASSIC

387.124.v22 GL

In addition to our Terms and Conditions (the "Terms"), please be aware of the following:

Art Form Architecture, LLC ("Artform") requires that our Drawings be built substantially as designed. Artform will not be obligated by or liable for use of this design with markups as part of any builder agreement. While we attempt to accommodate where possible and reasonable, and where the changes do not denigrate our design, any and all changes to Drawings must be approved in writing by Artform. It is recommended that you have your Drawing updated by Artform prior to attaching any Drawing to any builder agreement. Artform shall not be responsible for the misuse of or unauthorized alterations to any of its Drawings.



©2017 Art Form Architecture, LLC
Sherlock 387.124.v22 GL

Width 54.00 FT

Depth 36.00 FT

Height 33.08 FT

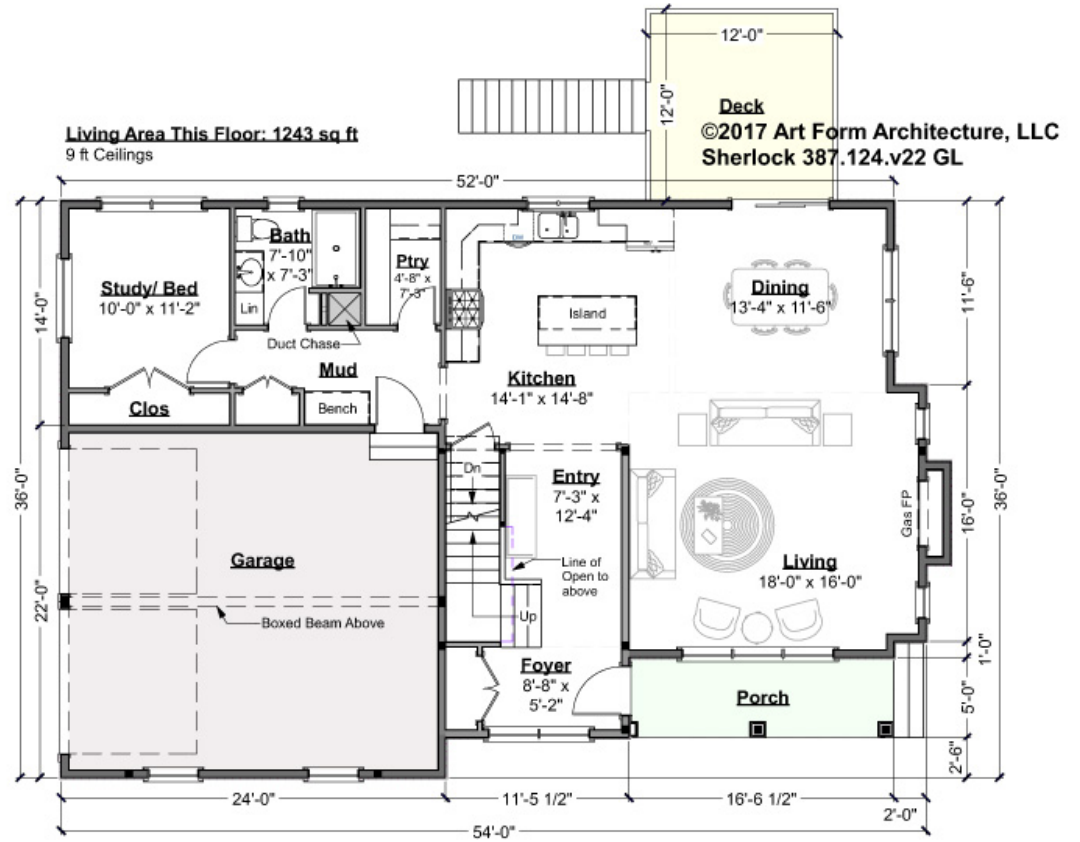
LIVING AREA		BEDROOMS		BATHROOMS	
	2785 FT		5		3
Main	2785 FT	Main	5	Main	3
Future	0 FT	Future	0	Future	0
2 nd Unit	0 FT	2 nd Unit	0	2 nd Unit	0



SHERLOCK CLASSIC - 1ST FLOOR

387.124.v22 GL

Some features shown are optional. Your Purchase & Sale Agreement governs, whether items are labeled "optional" in this document or not.



CLG HT SHOWN 9'-0" CLG HT POSSIBLE 8'-0"

* Major Change Fee, see website plan page for cost

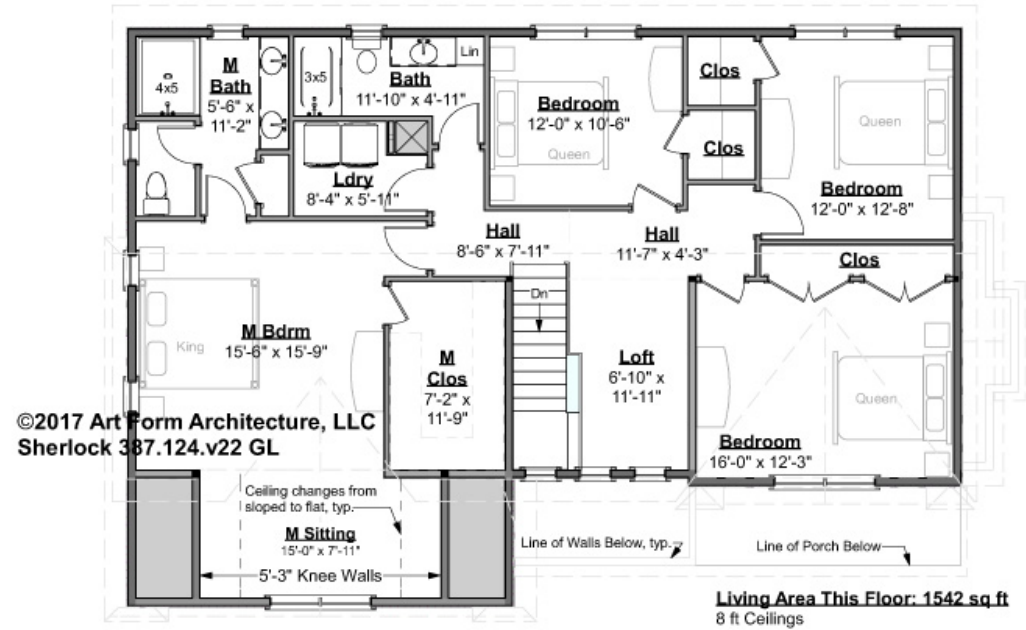
F1 LIVING AREA	1243 FT	F1 BEDROOMS	1	F1 BATHROOMS	1
Main	1243.00 FT	Main	1.00	Main	1.00
Future	FT	Future		Future	
2 nd Unit	FT	2 nd Unit		2 nd Unit	



SHERLOCK CLASSIC - 2ND FLOOR

387.124.v22 GL

Some features shown are optional. Your Purchase & Sale Agreement governs, whether items are labeled "optional" in this document or not.



CLG HT SHOWN 8'-0" CLG HT POSSIBLE 9'-0"

* Major Change Fee, see website plan page for cost

F1 LIVING AREA	1542 ^{FT}	F1 BEDROOMS	4	F1 BATHROOMS	2
Main	1542.00 ^{FT}	Main	4.00	Main	2.00
Future	FT	Future		Future	
2 nd Unit	FT	2 nd Unit		2 nd Unit	

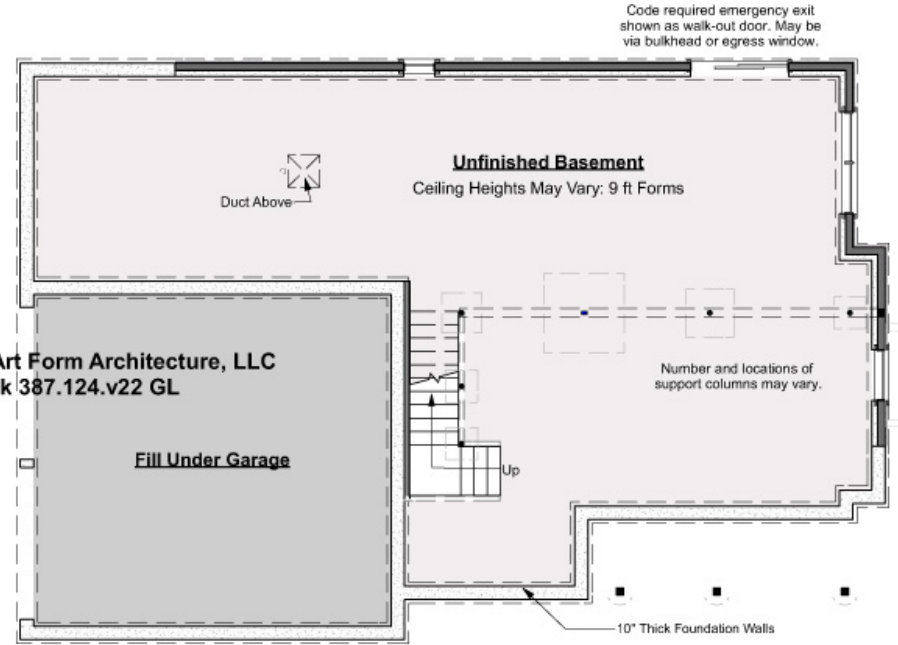


SHERLOCK CLASSIC - BASEMENT

387.124.v22 GL

Some features shown are optional. Your Purchase & Sale Agreement governs, whether items are labeled "optional" in this document or not.

©2017 Art Form Architecture, LLC
Sherlock 387.124.v22 GL



CLG HT SHOWN 8'-1" - 8'-11"

CLG HT POSSIBLE 7'-8"

* Major Change Fee, see website plan page for cost

F1 LIVING AREA		0 FT		F1 BEDROOMS		0		F1 BATHROOMS		0	
Main	FT			Main				Main			
Future	FT			Future				Future			
2 nd Unit	FT			2 nd Unit				2 nd Unit			



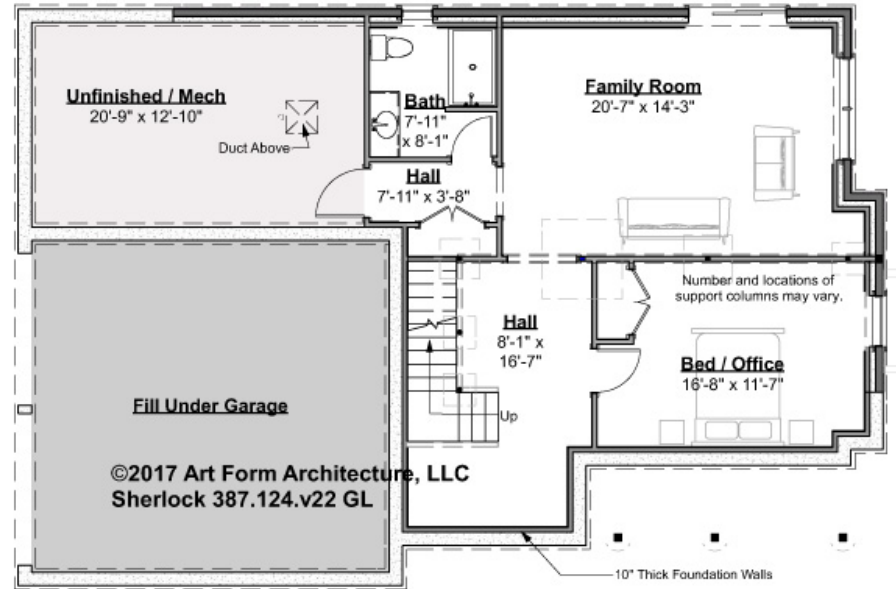
SHERLOCK CLASSIC - BASEMENT

387.124.v22 GL

Some features shown are optional. Your Purchase & Sale Agreement governs, whether items are labeled "optional" in this document or not.

Finished Living Area This Floor: 937 sq ft
Ceiling Heights May Vary: 9 ft Forms

Code required emergency exit shown as walk-out door. May be via bulkhead or egress window.



Finished Basement Floor Plan Also Available - Additional Image



Art Form Architecture, LLC

SHERLOCK CLASSIC - FRONT ELEVATION

387.124.v22 GL

Some features shown are optional. Your Purchase & Sale Agreement governs, whether items are labeled "optional" in this document or not.



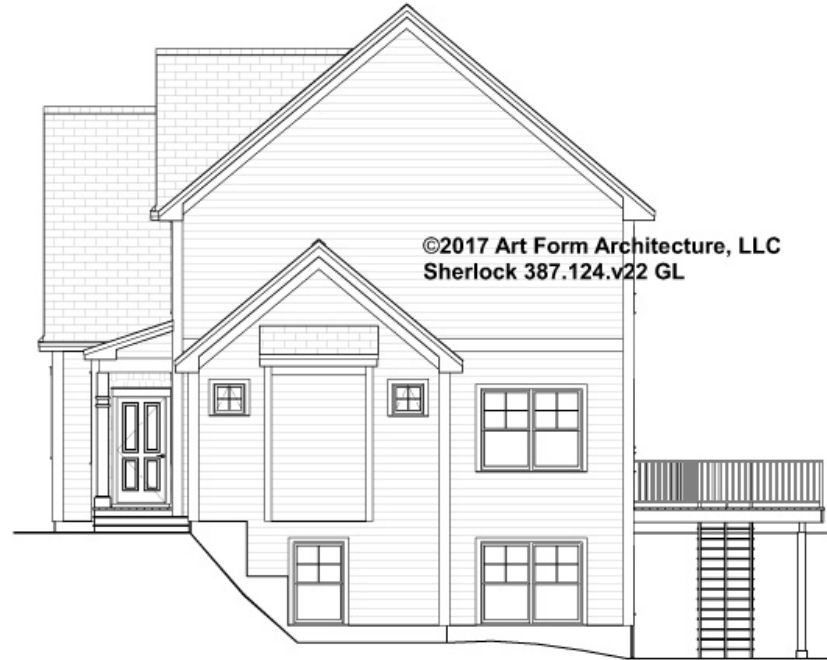


Art Form Architecture, LLC

SHERLOCK CLASSIC - RIGHT ELEVATION

387.124.v22 GL

—
Some features shown are optional. Your Purchase & Sale Agreement governs, whether items are labeled "optional" in this document or not.

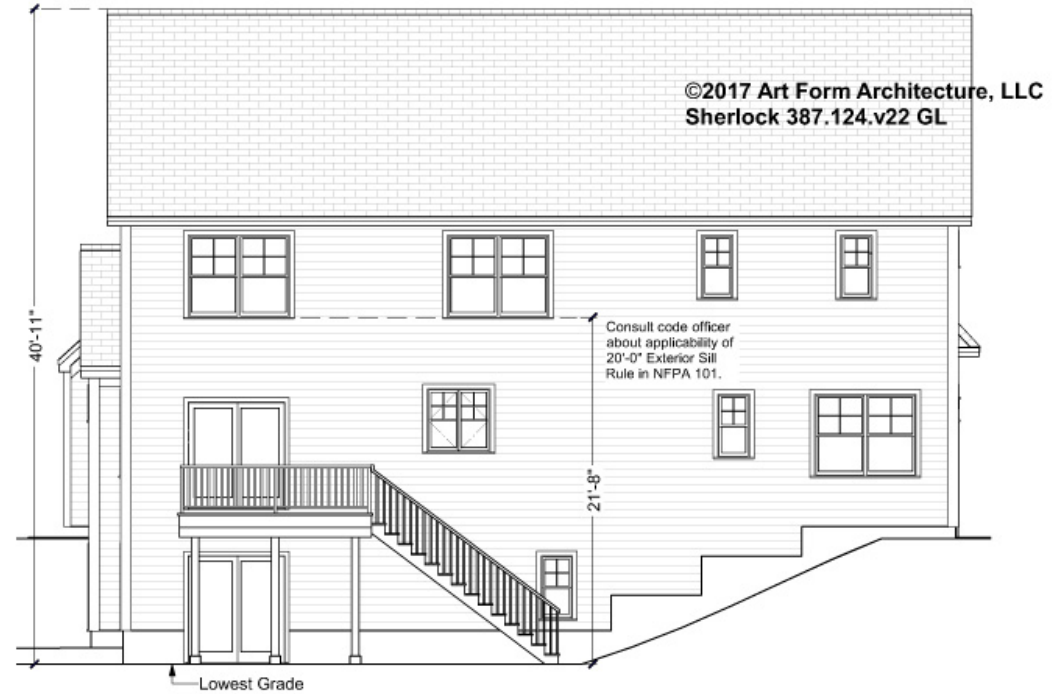




SHERLOCK CLASSIC - REAR ELEVATION

387.124.v22 GL

Some features shown are optional. Your Purchase & Sale Agreement governs, whether items are labeled "optional" in this document or not.





Art Form Architecture, LLC

SHERLOCK CLASSIC - LEFT ELEVATION

387.124.v22 GL

—
Some features shown are optional. Your Purchase & Sale Agreement governs, whether items are labeled "optional" in this document or not.





Art Form Architecture, LLC

SHERLOCK CLASSIC - REAR RENDER 387.124.v22 GL

Some features shown are optional. Your Purchase & Sale Agreement governs, whether items are labeled "optional" in this document or not.

