



# SHERLOCK

## 387.124.v19 GL

In addition to our Terms and Conditions (the "Terms"), please be aware of the following:

Art Form Architecture, LLC ("Artform") requires that our Drawings be built substantially as designed. Artform will not be obligated by or liable for use of this design with markups as part of any builder agreement. While we attempt to accommodate where possible and reasonable, and where the changes do not denigrate our design, any and all changes to Drawings must be approved in writing by Artform. It is recommended that you have your Drawing updated by Artform prior to attaching any Drawing to any builder agreement. Artform shall not be responsible for the misuse of or unauthorized alterations to any of its Drawings.



©2011 Art Form Architecture, LLC  
Sherlock 387.124.v19 GL

Width 54.00 FT

Depth 36.00 FT

Height 33.08 FT

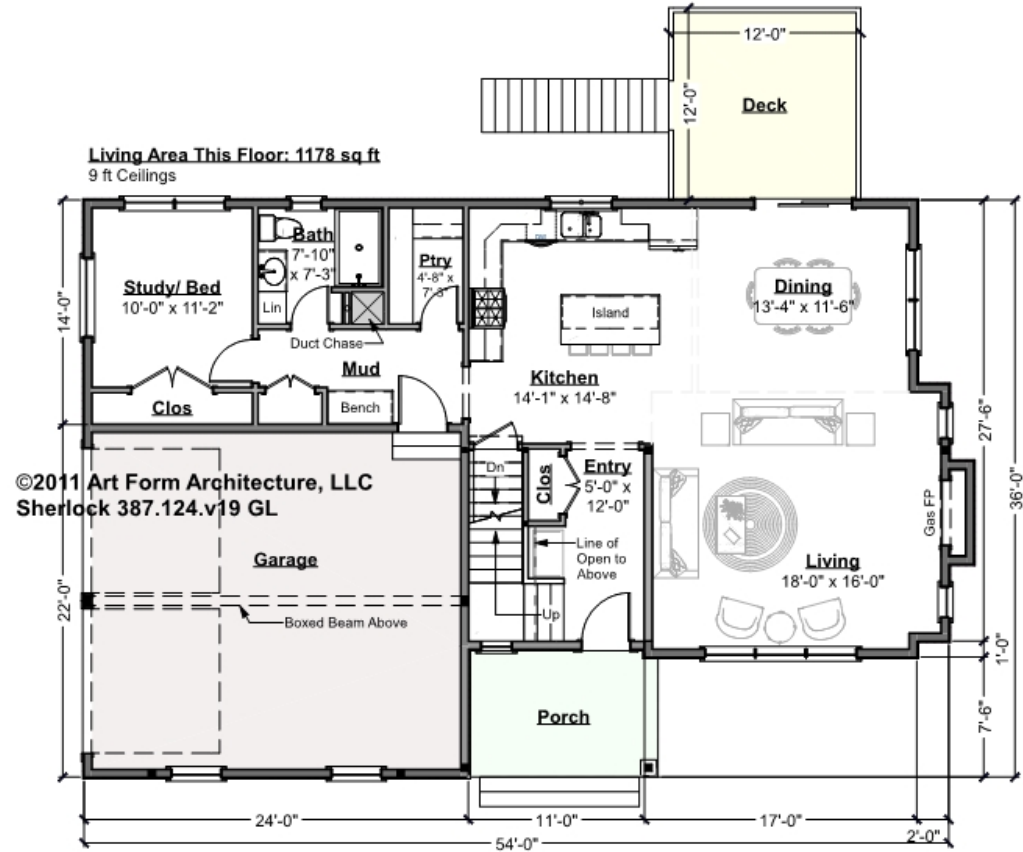
LIVING AREA		BEDROOMS		BATHROOMS	
	2720 FT <sup>2</sup>		5		3
Main	2720 FT <sup>2</sup>	Main	5	Main	3
Future	0 FT <sup>2</sup>	Future	0	Future	0
2 <sup>nd</sup> Unit	0 FT <sup>2</sup>	2 <sup>nd</sup> Unit	0	2 <sup>nd</sup> Unit	0



# SHERLOCK - 1<sup>ST</sup> FLOOR

## 387.124.v19 GL

Some features shown are optional. Your Purchase & Sale Agreement governs, whether items are labeled "optional" in this document or not.



CLG HT SHOWN 9'-0"    CLG HT POSSIBLE 8'-0"

\* Major Change Fee, see website plan page for cost

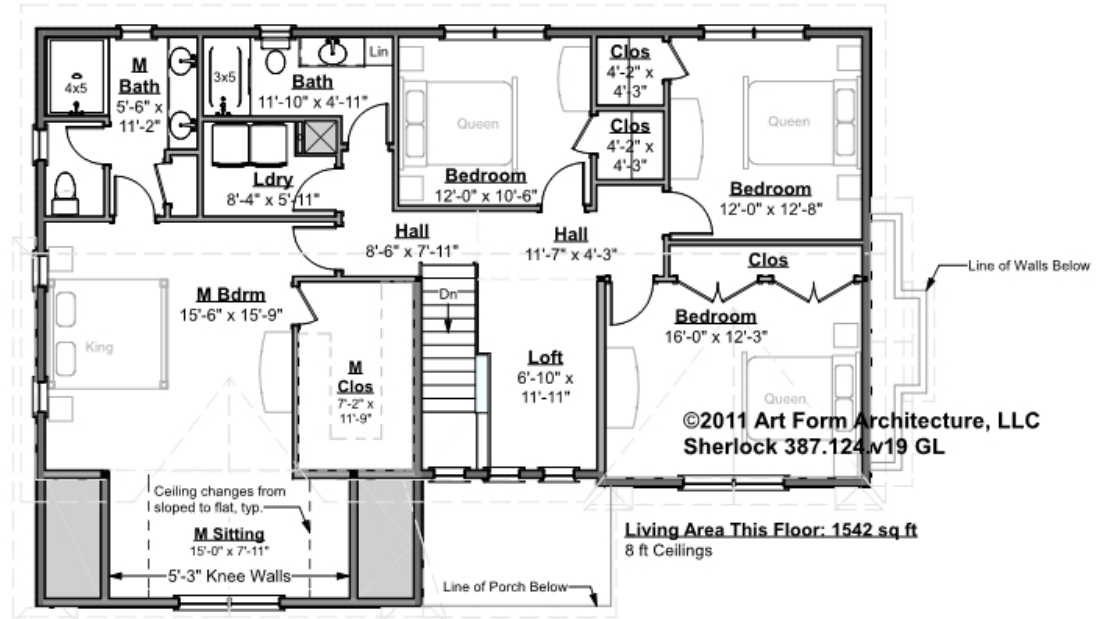
F1 LIVING AREA	1178 FT	F1 BEDROOMS	1	F1 BATHROOMS	1
Main	1178.00 FT	Main	1.00	Main	1.00
Future	FT	Future		Future	
2 <sup>nd</sup> Unit	FT	2 <sup>nd</sup> Unit		2 <sup>nd</sup> Unit	



# SHERLOCK - 2<sup>ND</sup> FLOOR

## 387.124.v19 GL

Some features shown are optional. Your Purchase & Sale Agreement governs, whether items are labeled "optional" in this document or not.



**CLG HT SHOWN 8'-0"    CLG HT POSSIBLE 9'-0"**

*\* Major Change Fee, see website plan page for cost*

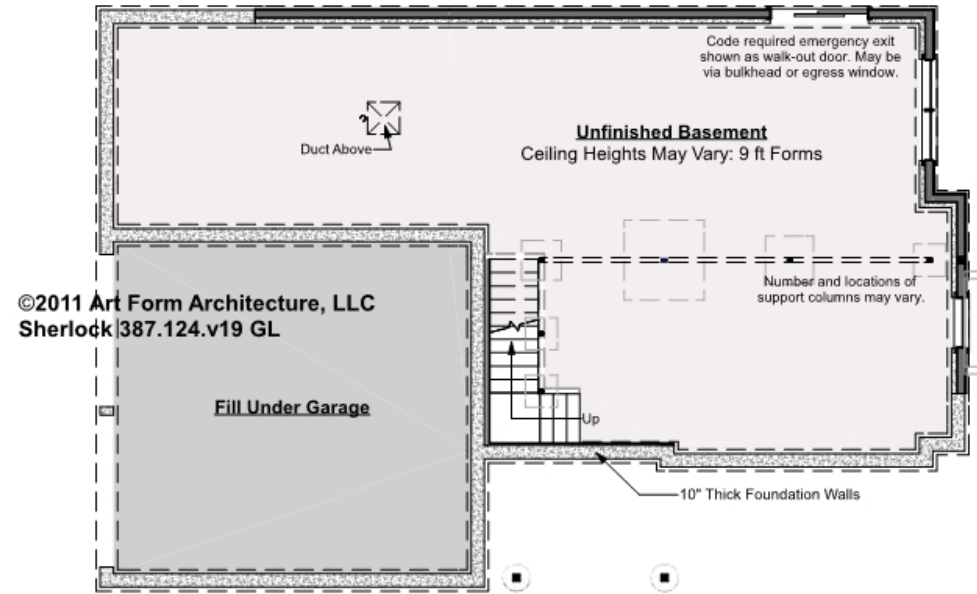
F1 LIVING AREA	1542 FT	F1 BEDROOMS	4	F1 BATHROOMS	2
Main	1542.00 FT	Main	4.00	Main	2.00
Future	FT	Future		Future	
2 <sup>nd</sup> Unit	FT	2 <sup>nd</sup> Unit		2 <sup>nd</sup> Unit	



# SHERLOCK - BASEMENT

## 387.124.v19 GL

Some features shown are optional. Your Purchase & Sale Agreement governs, whether items are labeled "optional" in this document or not.



CLG HT SHOWN 8'-1" - 8'-11"

CLG HT POSSIBLE 10' & Up

\* Major Change Fee, see website plan page for cost

F1 LIVING AREA		0 FT	F1 BEDROOMS		0	F1 BATHROOMS		0
Main	FT		Main			Main		
Future	FT		Future			Future		
2 <sup>nd</sup> Unit	FT		2 <sup>nd</sup> Unit			2 <sup>nd</sup> Unit		



## SHERLOCK - FRONT ELEVATION

387.124.v19 GL

Some features shown are optional. Your Purchase & Sale Agreement governs, whether items are labeled "optional" in this document or not.





Art Form Architecture, LLC

## SHERLOCK - RIGHT ELEVATION

387.124.v19 GL

Some features shown are optional. Your Purchase & Sale Agreement governs, whether items are labeled "optional" in this document or not.





## SHERLOCK - REAR ELEVATION

387.124.v19 GL

Some features shown are optional. Your Purchase & Sale Agreement governs, whether items are labeled "optional" in this document or not.



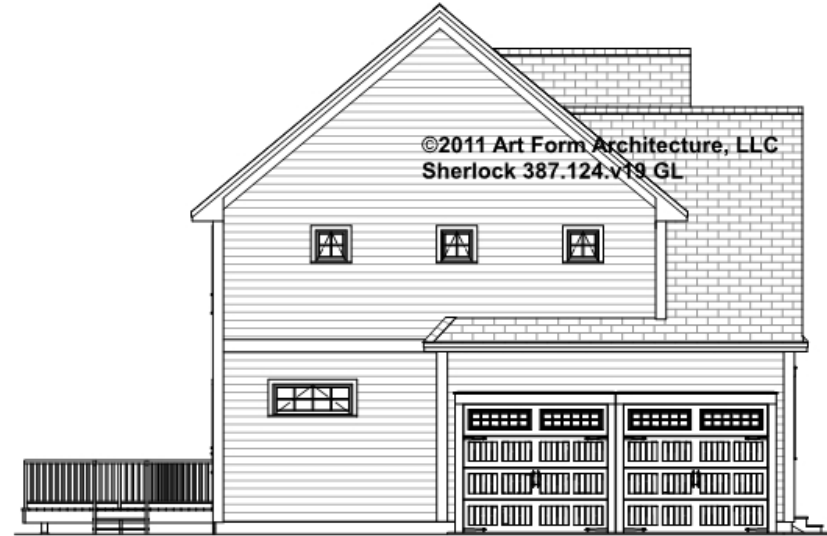


Art Form Architecture, LLC

## SHERLOCK - LEFT ELEVATION

387.124.v19 GL

Some features shown are optional. Your Purchase & Sale Agreement governs, whether items are labeled "optional" in this document or not.







Art Form Architecture, LLC

## SHERLOCK - REAR RENDER

387.124.v19 GL

Some features shown are optional. Your Purchase & Sale Agreement governs, whether items are labeled "optional" in this document or not.

