



SHEPHERD 906.124.v5 GL

This is one example of Modern Farmhouse exterior styling. • White siding, with some Board and Batten (yes, can be done in vinyl) • Black windows. And – not always part of the look: (can be calmed down if cost prohibitive, or added if not here) • Dark wood and/or stone accents. • Some black standing seam metal roofing.

In addition to our Terms and Conditions (the "Terms"), please be aware of the following:

Art Form Architecture, LLC ("Artform") requires that our Drawings be built substantially as designed. Artform will not be obligated by or liable for use of this design with markups as part of any builder agreement. While we attempt to accommodate where possible and reasonable, and where the changes do not denigrate our design, any and all changes to Drawings must be approved in writing by Artform. It is recommended that you have your Drawing updated by Artform prior to attaching any Drawing to any builder agreement. Artform shall not be responsible for the misuse of or unauthorized alterations to any of its Drawings.



Width 41.00 FT

Depth 62.00 FT

Height 34.00 FT

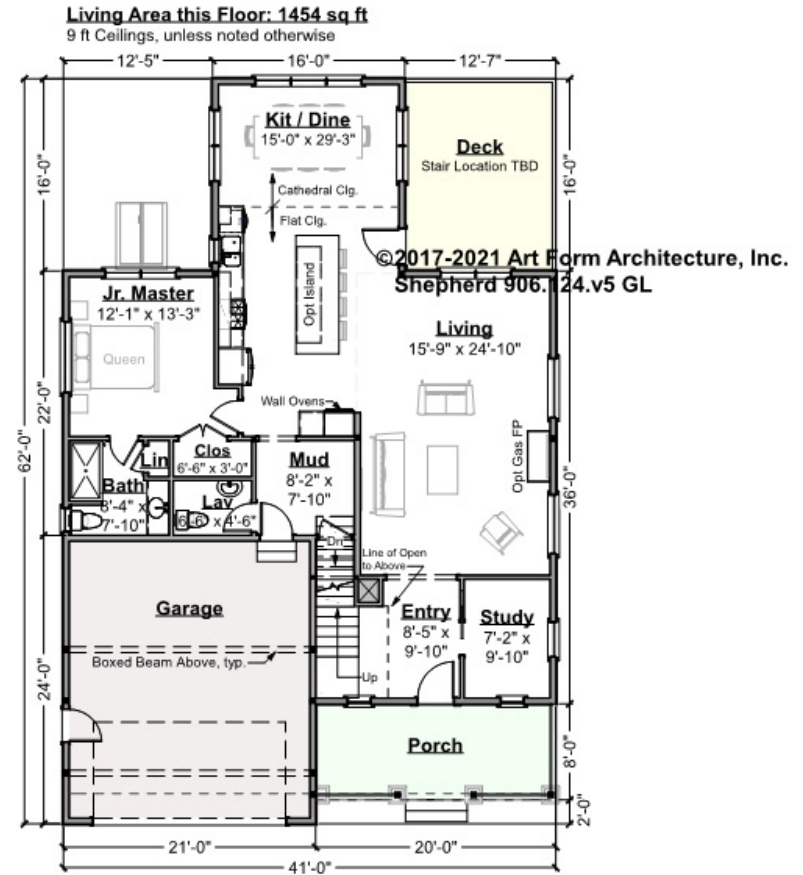
LIVING AREA		BEDROOMS		BATHROOMS	
	2977 FT ²		5		3
Main	2977 FT ²	Main	4	Main	3
Future	0 FT ²	Future	1	Future	0
2 nd Unit	0 FT ²	2 nd Unit	0	2 nd Unit	0



SHEPHERD - 1ST FLOOR

906.124.v5 GL

Some features shown are optional. Your Purchase & Sale Agreement governs, whether items are labeled "optional" in this document or not.



CLG HT SHOWN 9'-0" CLG HT POSSIBLE 9'-0"

* Major Change Fee, see website plan page for cost

F1 LIVING AREA		F1 BEDROOMS		F1 BATHROOMS	
Main	1454 FT	Main	1	Main	1
Future	1454.00 FT	Future	1.00	Future	1.00
2 nd Unit	0.00 FT	Future	0.00	Future	0.00
		2 nd Unit	0.00	2 nd Unit	0.00



SHEPHERD - 2ND FLOOR

906.124.v5 GL

Some features shown are optional. Your Purchase & Sale Agreement governs, whether items are labeled "optional" in this document or not.

© 2017-2021 Art Form Architecture, Inc.
Shepherd 906.124.v5 GL



CLG HT SHOWN 8'-0"

CLG HT POSSIBLE 9'-0"

* Major Change Fee, see website plan page for cost

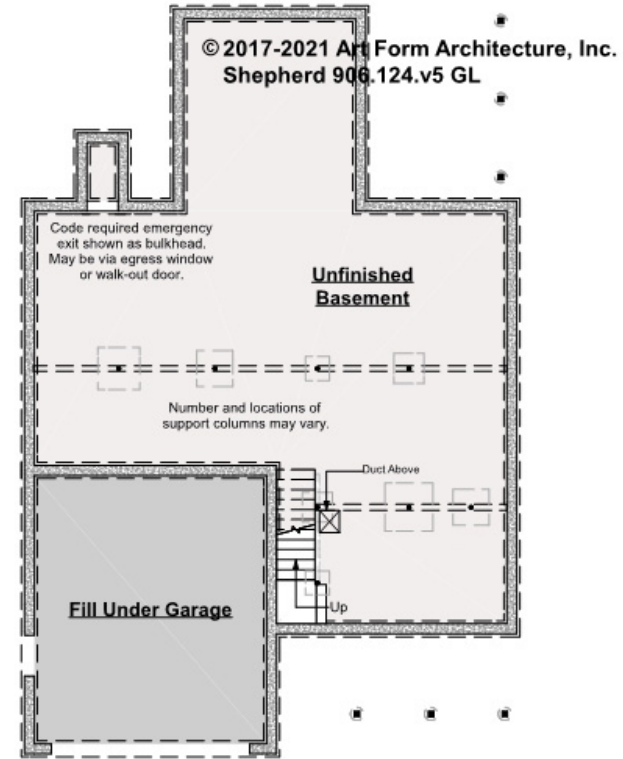
F1 LIVING AREA		F1 BEDROOMS		F1 BATHROOMS	
	1523 ^{FT}		4		2
Main	1523.00 ^{FT}	Main	3.00	Main	2.00
Future	0.00 ^{FT}	Future	1.00	Future	0.00
2 nd Unit	0.00 ^{FT}	2 nd Unit	0.00	2 nd Unit	0.00



SHEPHERD - BASEMENT

906.124.v5 GL

Some features shown are optional. Your Purchase & Sale Agreement governs, whether items are labeled "optional" in this document or not.



CLG HT SHOWN 7'-8" CLG HT POSSIBLE 9'-0"

** Major Change Fee, see website plan page for cost*

F1 LIVING AREA		F1 BEDROOMS		F1 BATHROOMS	
0	FT	0		0	
Main	0.00 FT	Main	0.00	Main	0.00
Future	0.00 FT	Future	0.00	Future	0.00
2 nd Unit	0.00 FT	2 nd Unit	0.00	2 nd Unit	0.00



Art Form Architecture, LLC

SHEPHERD - FRONT ELEVATION

906.124.v5 GL

Some features shown are optional. Your Purchase & Sale Agreement governs, whether items are labeled "optional" in this document or not.





Art Form Architecture, LLC

SHEPHERD - RIGHT ELEVATION

906.124.v5 GL

Some features shown are optional. Your Purchase & Sale Agreement governs, whether items are labeled "optional" in this document or not.





Art Form Architecture, LLC

SHEPHERD - REAR ELEVATION

906.124.v5 GL

Some features shown are optional. Your Purchase & Sale Agreement governs, whether items are labeled "optional" in this document or not.





Art Form Architecture, LLC

SHEPHERD - LEFT ELEVATION

906.124.v5 GL

Some features shown are optional. Your Purchase & Sale Agreement governs, whether items are labeled "optional" in this document or not.





Art Form Architecture, LLC

SHEPHERD - REAR RENDER

906.124.v5 GL

—
Some features shown are optional. Your Purchase & Sale Agreement governs, whether items are labeled "optional" in this document or not.

