



# SHEPHERD

## 906.124.v4 GL

In addition to our Terms and Conditions (the "Terms"), please be aware of the following:

Art Form Architecture, LLC ("Artform") requires that our Drawings be built substantially as designed. Artform will not be obligated by or liable for use of this design with markups as part of any builder agreement. While we attempt to accommodate where possible and reasonable, and where the changes do not denigrate our design, any and all changes to Drawings must be approved in writing by Artform. It is recommended that you have your Drawing updated by Artform prior to attaching any Drawing to any builder agreement. Artform shall not be responsible for the misuse of or unauthorized alterations to any of its Drawings.



Width 43.50 FT

Depth 45.00 FT

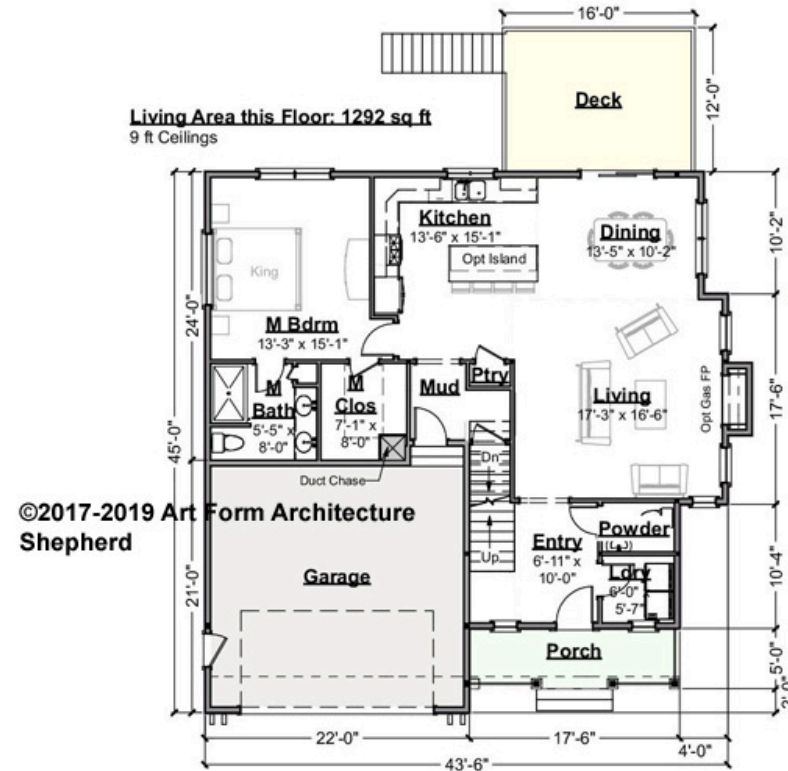
Height 35.34 FT

LIVING AREA		BEDROOMS		BATHROOMS	
	2688 FT		4		3.5
Main	2688 FT	Main	4	Main	3.5
Future	0 FT	Future	0	Future	0
2 <sup>nd</sup> Unit	0 FT	2 <sup>nd</sup> Unit	0	2 <sup>nd</sup> Unit	0



**SHEPHERD - 1<sup>ST</sup> FLOOR**  
**906.124.v4 GL**

Some features shown are optional. Your Purchase & Sale Agreement governs, whether items are labeled "optional" in this document or not.



**CLG HT SHOWN 9'-0"    CLG HT POSSIBLE 8'-0"**

*\* Major Change Fee, see website plan page for cost*

F1 LIVING AREA	1292 <sup>FT</sup>	F1 BEDROOMS	1	F1 BATHROOMS	1.5
Main	1292.00 <sup>FT</sup>	Main	1.00	Main	1.50
Future	0.00 <sup>FT</sup>	Future	0.00	Future	0.00
2 <sup>nd</sup> Unit	0.00 <sup>FT</sup>	2 <sup>nd</sup> Unit	0.00	2 <sup>nd</sup> Unit	0.00

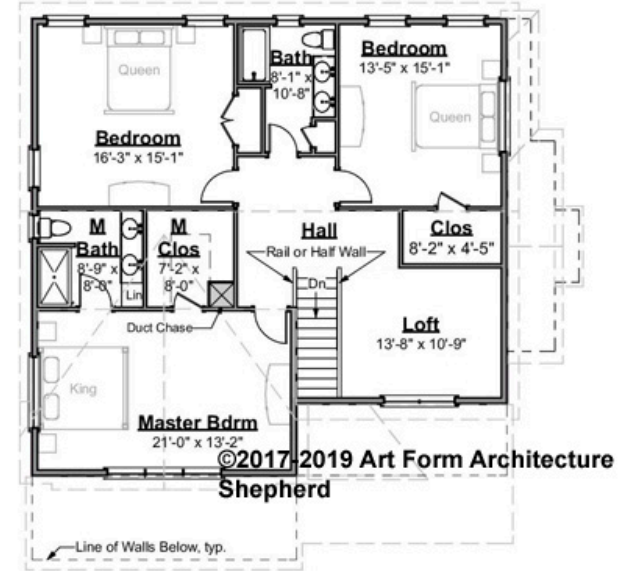


# SHEPHERD - 2<sup>ND</sup> FLOOR

906.124.v4 GL

Some features shown are optional. Your Purchase & Sale Agreement governs, whether items are labeled "optional" in this document or not.

Living Area this Floor: 1396 sq ft  
8 ft Ceilings



CLG HT SHOWN 8'-0"

CLG HT POSSIBLE 8'-0"

\* Major Change Fee, see website plan page for cost

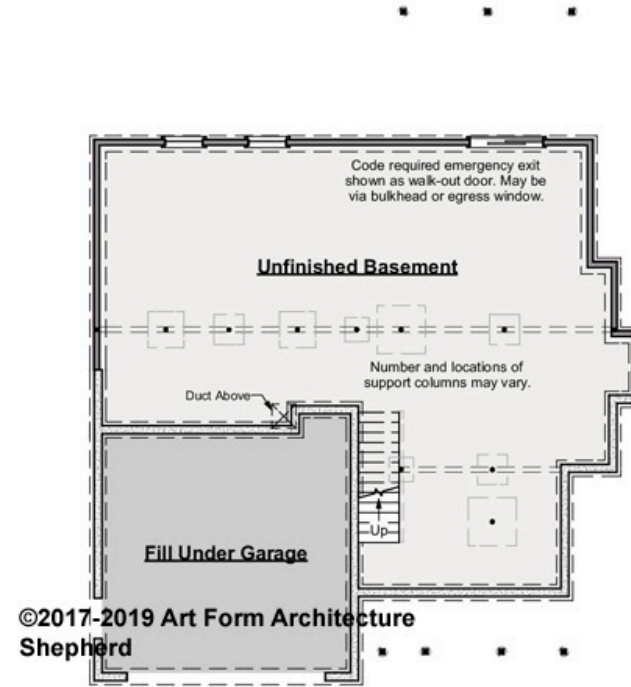
F1 LIVING AREA		F1 BEDROOMS		F1 BATHROOMS	
	1396 <sup>FT</sup>		3		2
Main	1396.00 <sup>FT</sup>	Main	3.00	Main	2.00
Future	0.00 <sup>FT</sup>	Future	0.00	Future	0.00
2 <sup>nd</sup> Unit	0.00 <sup>FT</sup>	2 <sup>nd</sup> Unit	0.00	2 <sup>nd</sup> Unit	0.00



# SHEPHERD - BASEMENT

## 906.124.v4 GL

Some features shown are optional. Your Purchase & Sale Agreement governs, whether items are labeled "optional" in this document or not.



**CLG HT SHOWN 7'-8"      CLG HT POSSIBLE 9'-0"**

*\* Major Change Fee, see website plan page for cost*

F1 LIVING AREA		F1 BEDROOMS		F1 BATHROOMS	
	0 FT		0		0
Main	0.00 FT	Main	0.00	Main	0.00
Future	0.00 FT	Future	0.00	Future	0.00
2 <sup>nd</sup> Unit	0.00 FT	2 <sup>nd</sup> Unit	0.00	2 <sup>nd</sup> Unit	0.00

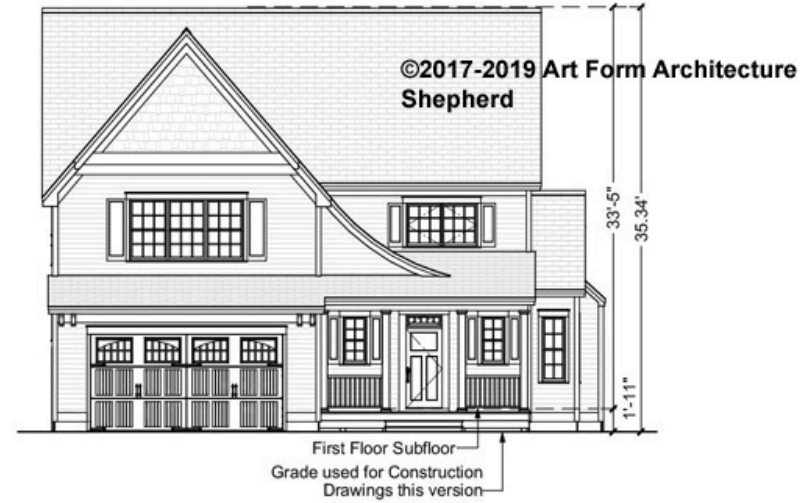


Art Form Architecture, LLC

## SHEPHERD - FRONT ELEVATION

906.124.v4 GL

Some features shown are optional. Your Purchase & Sale Agreement governs, whether items are labeled "optional" in this document or not.





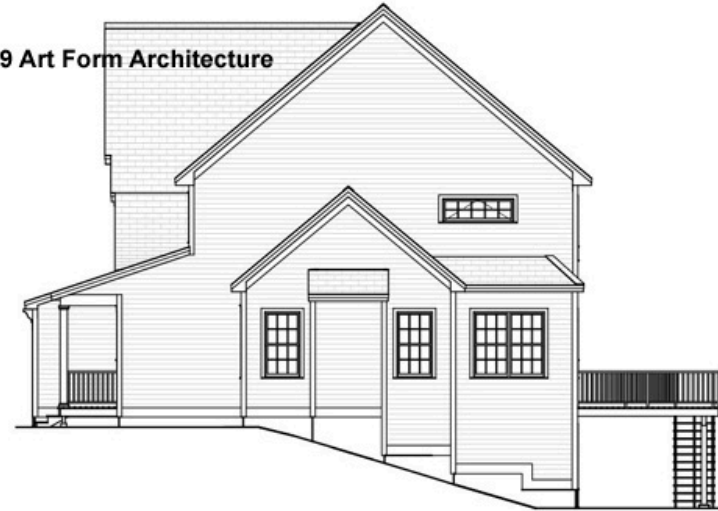
Art Form Architecture, LLC

## SHEPHERD - RIGHT ELEVATION

906.124.v4 GL

Some features shown are optional. Your Purchase & Sale Agreement governs, whether items are labeled "optional" in this document or not.

©2017-2019 Art Form Architecture  
Shepherd

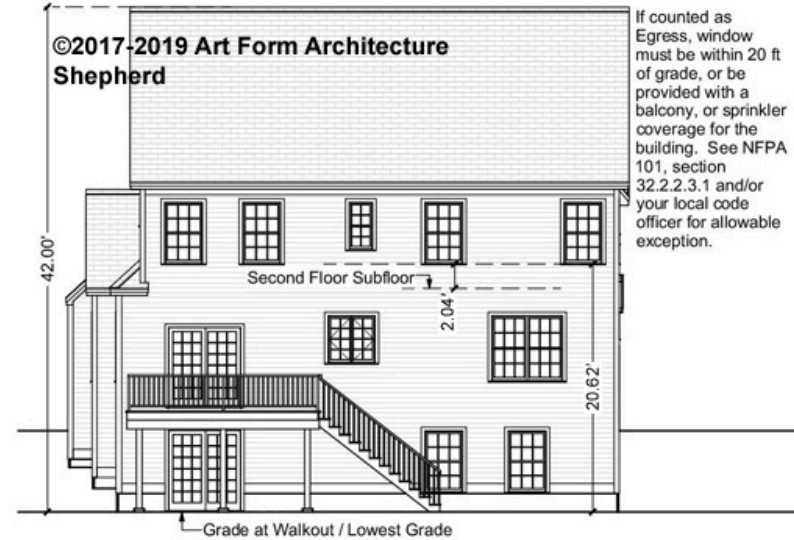




## SHEPHERD - REAR ELEVATION

906.124.v4 GL

Some features shown are optional. Your Purchase & Sale Agreement governs, whether items are labeled "optional" in this document or not.





Art Form Architecture, LLC

## SHEPHERD - LEFT ELEVATION

906.124.v4 GL

Some features shown are optional. Your Purchase & Sale Agreement governs, whether items are labeled "optional" in this document or not.

