



SHEPHERD

906.124.v2 GR

In addition to our Terms and Conditions (the "Terms"), please be aware of the following:

Art Form Architecture, LLC ("Artform") requires that our Drawings be built substantially as designed. Artform will not be obligated by or liable for use of this design with markups as part of any builder agreement. While we attempt to accommodate where possible and reasonable, and where the changes do not denigrate our design, any and all changes to Drawings must be approved in writing by Artform. It is recommended that you have your Drawing updated by Artform prior to attaching any Drawing to any builder agreement. Artform shall not be responsible for the misuse of or unauthorized alterations to any of its Drawings.



Width 39.50 FT

Depth 44.00 FT

Height 35.42 FT

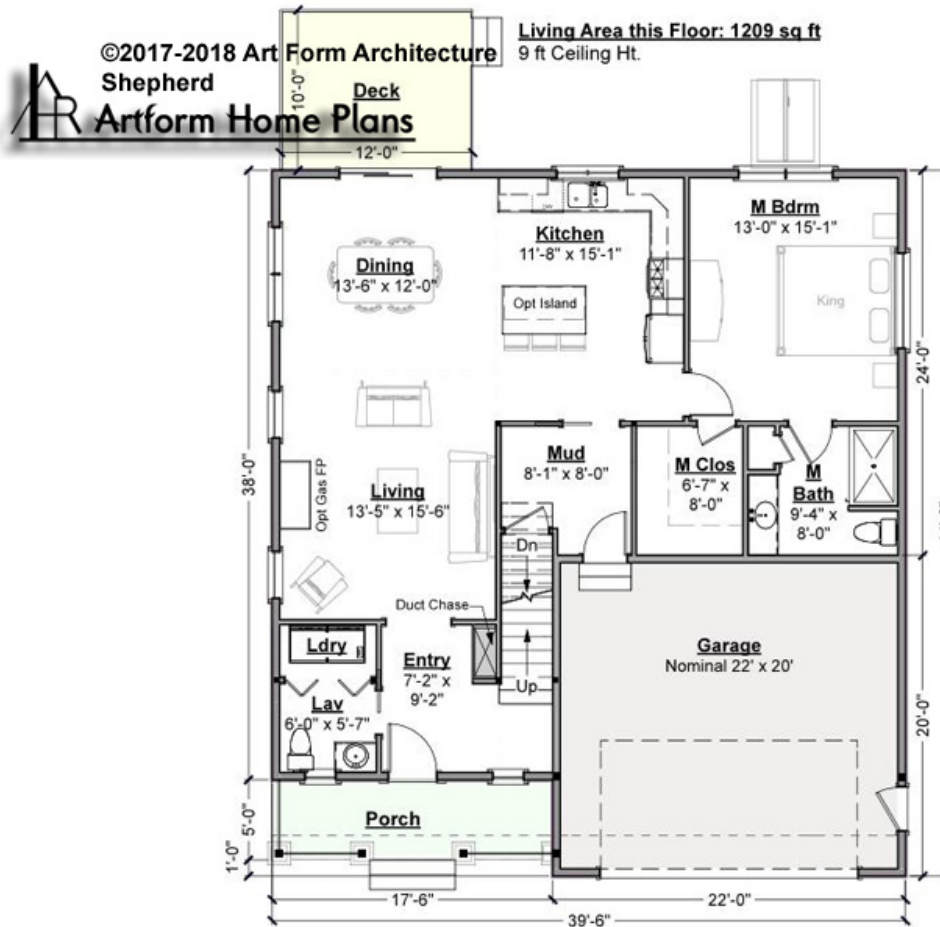
LIVING AREA		BEDROOMS		BATHROOMS	
	3319 FT		5		3.5
Main	2605 FT	Main	4	Main	3.5
Future	714 FT	Future	1	Future	0
2 nd Unit	0 FT	2 nd Unit	0	2 nd Unit	0



SHEPHERD - 1ST FLOOR

906.124.v2 GR

Some features shown are optional. Your Purchase & Sale Agreement governs, whether items are labeled "optional" in this document or not.



CLG HT SHOWN 9'-0" CLG HT POSSIBLE 8'-0"

* Major Change Fee, see website plan page for cost

F1 LIVING AREA	1209 FT	F1 BEDROOMS	1	F1 BATHROOMS	1.5
Main	1209.00 FT	Main	1.00	Main	1.50
Future	0.00 FT	Future	0.00	Future	0.00
2 nd Unit	0.00 FT	2 nd Unit	0.00	2 nd Unit	0.00

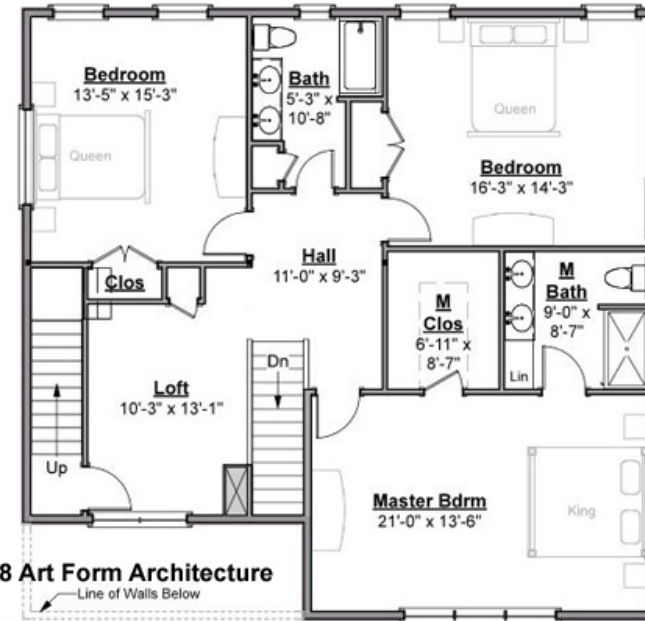


SHEPHERD - 2ND FLOOR

906.124.v2 GR

Some features shown are optional. Your Purchase & Sale Agreement governs, whether items are labeled "optional" in this document or not.

Living Area this Floor: 1396 sq ft
8 ft Ceiling Ht.



©2017-2018 Art Form Architecture
 Shepherd
 Artform Home Plans

CLG HT SHOWN 8'-0" CLG HT POSSIBLE 8'-0"

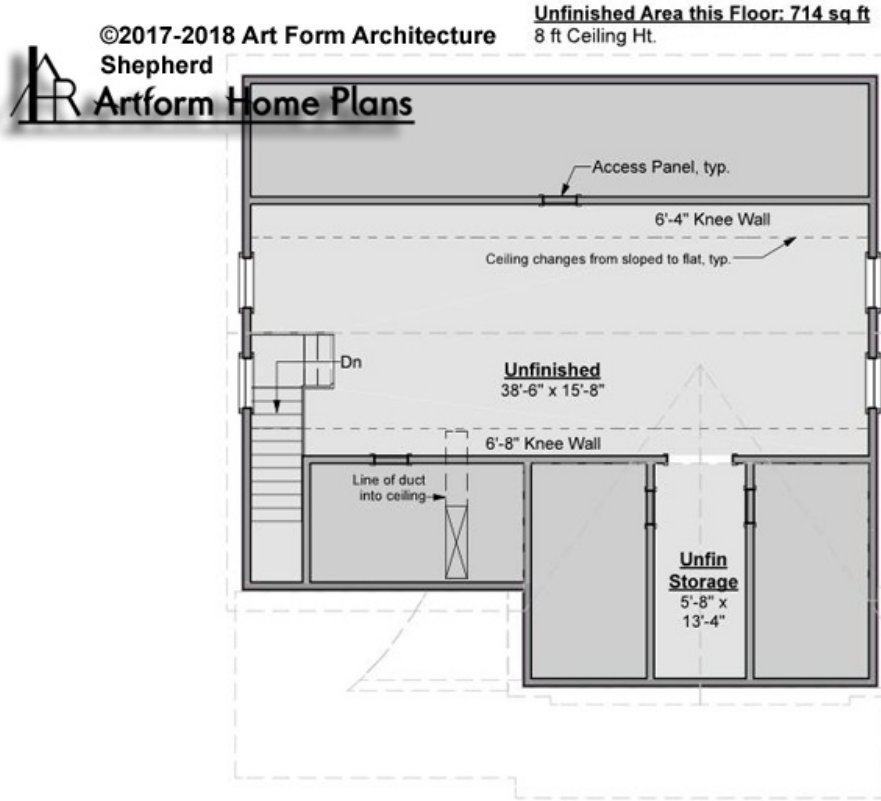
* Major Change Fee, see website plan page for cost

F1 LIVING AREA	1396 ^{FT}	F1 BEDROOMS	3	F1 BATHROOMS	2
Main	1396.00 ^{FT}	Main	3.00	Main	2.00
Future	0.00 ^{FT}	Future	0.00	Future	0.00
2 nd Unit	0.00 ^{FT}	2 nd Unit	0.00	2 nd Unit	0.00



SHEPHERD - 3RD FLOOR 906.124.v2 GR

Some features shown are optional. Your Purchase & Sale Agreement governs, whether items are labeled "optional" in this document or not.



CLG HT SHOWN 8'-0" CLG HT POSSIBLE 9'-0"

* Major Change Fee, see website plan page for cost

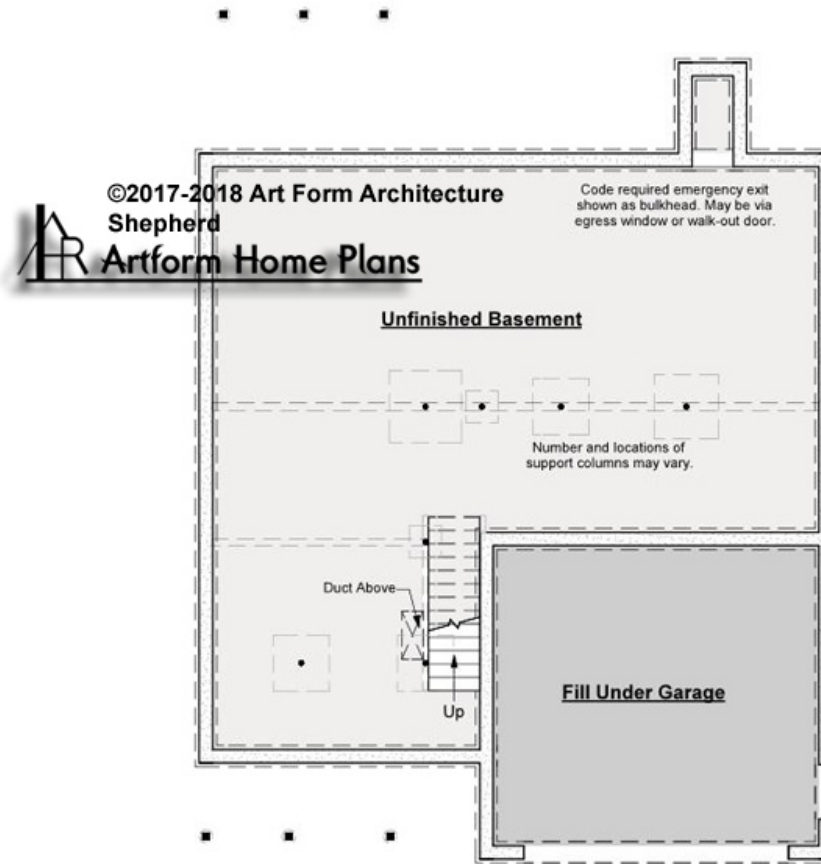
F1 LIVING AREA		F1 BEDROOMS		F1 BATHROOMS	
	714 ^{FT}		1		0
Main	0.00 ^{FT}	Main	0.00	Main	0.00
Future	714.00 ^{FT}	Future	1.00	Future	
2 nd Unit	0.00 ^{FT}	2 nd Unit	0.00	2 nd Unit	0.00



SHEPHERD - BASEMENT

906.124.v2 GR

Some features shown are optional. Your Purchase & Sale Agreement governs, whether items are labeled "optional" in this document or not.



CLG HT SHOWN 7'-8" CLG HT POSSIBLE 9'-0"

* Major Change Fee, see website plan page for cost

F1 LIVING AREA		F1 BEDROOMS		F1 BATHROOMS	
0	FT	0		0	
Main	0.00	Main	0.00	Main	0.00
Future	0.00	Future	0.00	Future	0.00
2 nd Unit	0.00	2 nd Unit	0.00	2 nd Unit	0.00

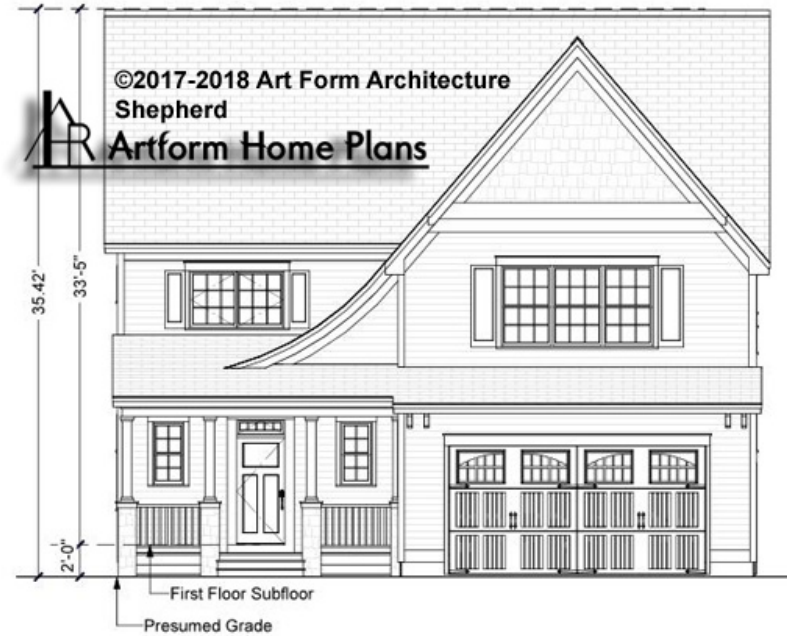


Art Form Architecture, LLC

SHEPHERD - FRONT ELEVATION

906.124.v2 GR

Some features shown are optional. Your Purchase & Sale Agreement governs, whether items are labeled "optional" in this document or not.

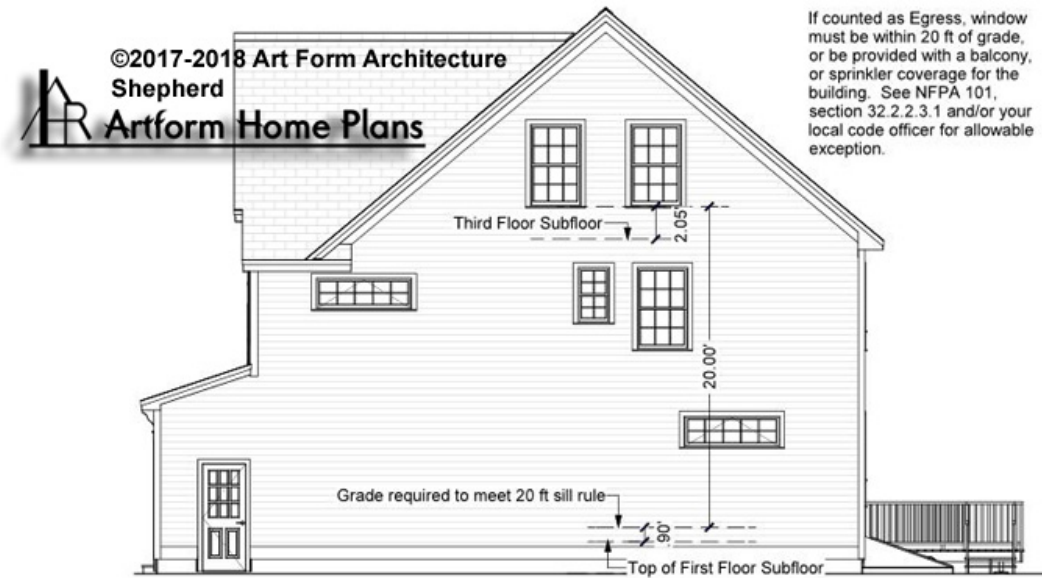




SHEPHERD - RIGHT ELEVATION

906.124.v2 GR

Some features shown are optional. Your Purchase & Sale Agreement governs, whether items are labeled "optional" in this document or not.





Art Form Architecture, LLC

SHEPHERD - REAR ELEVATION

906.124.v2 GR

—
Some features shown are optional. Your Purchase & Sale Agreement governs, whether items are labeled "optional" in this document or not.





SHEPHERD - LEFT ELEVATION

906.124.v2 GR

Some features shown are optional. Your Purchase & Sale Agreement governs, whether items are labeled "optional" in this document or not.

