



# ROCKET

## 1085.124 GR

In addition to our Terms and Conditions (the "Terms"), please be aware of the following:

Art Form Architecture, LLC ("Artform") requires that our Drawings be built substantially as designed. Artform will not be obligated by or liable for use of this design with markups as part of any builder agreement. While we attempt to accommodate where possible and reasonable, and where the changes do not denigrate our design, any and all changes to Drawings must be approved in writing by Artform. It is recommended that you have your Drawing updated by Artform prior to attaching any Drawing to any builder agreement. Artform shall not be responsible for the misuse of or unauthorized alterations to any of its Drawings.



Width 30.50 FT

Depth 63.00 FT

Height 33.16 FT

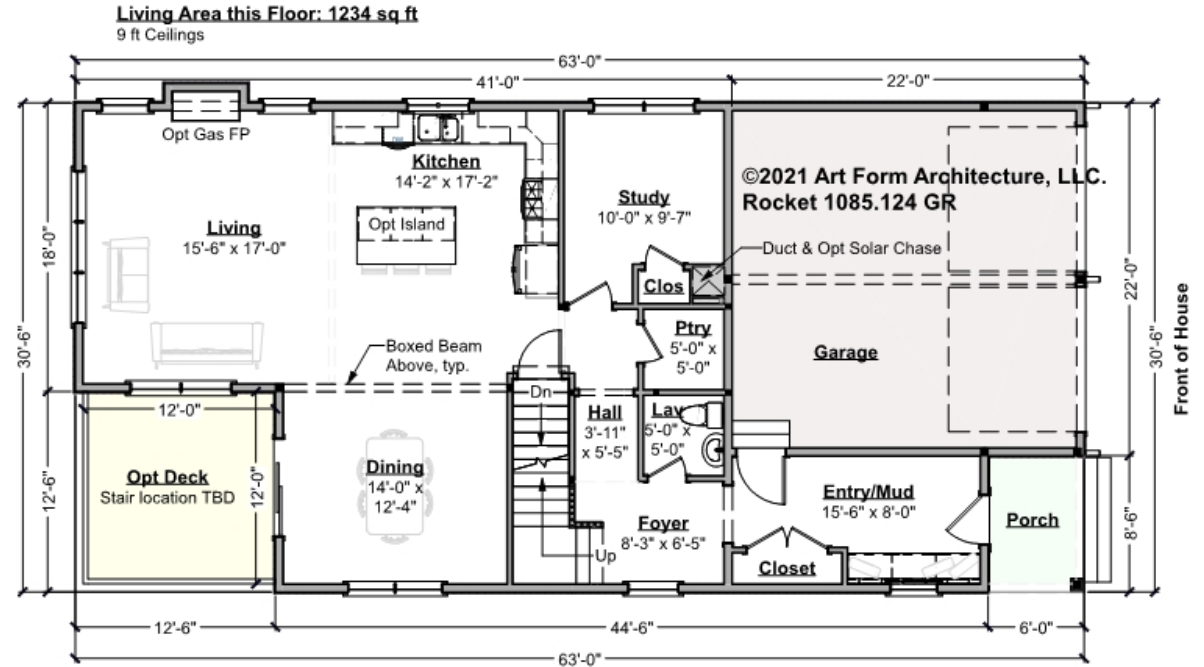
LIVING AREA		BEDROOMS		BATHROOMS	
	2588 FT		5		2.5
Main	2588 FT	Main	4	Main	2.5
Future	0 FT	Future	1	Future	0
2 <sup>nd</sup> Unit	0 FT	2 <sup>nd</sup> Unit	0	2 <sup>nd</sup> Unit	0



# ROCKET - 1<sup>ST</sup> FLOOR

## 1085.124 GR

Some features shown are optional. Your Purchase & Sale Agreement governs, whether items are labeled "optional" in this document or not.



CLG HT SHOWN 9'-0"    CLG HT POSSIBLE 8'-0"

\* Major Change Fee, see website plan page for cost

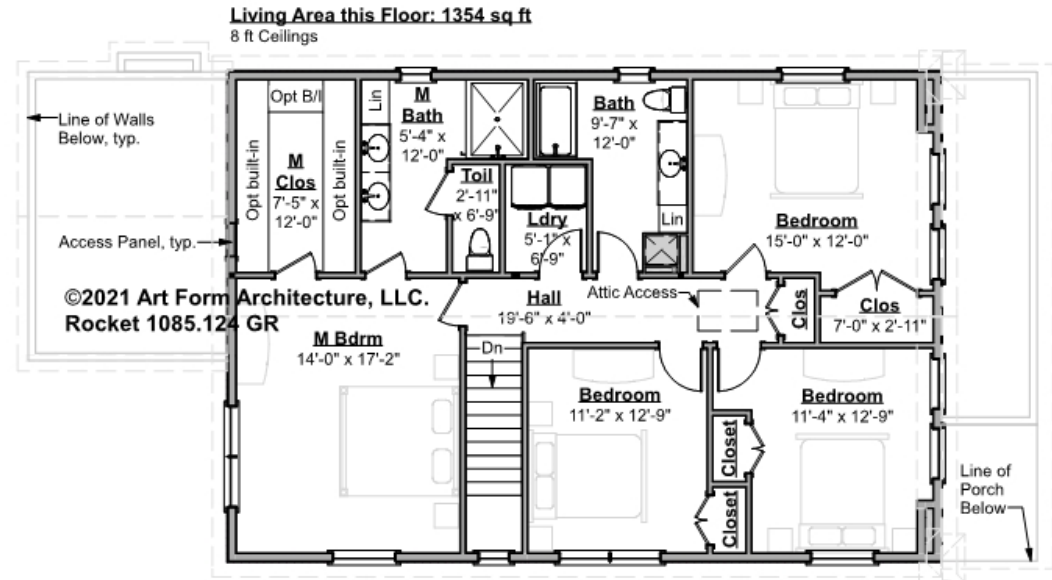
F1 LIVING AREA	1234 FT	F1 BEDROOMS	1	F1 BATHROOMS	0.5
Main	1234.00 FT	Main		Main	0.50
Future	FT	Future	1.00	Future	
2 <sup>nd</sup> Unit	FT	2 <sup>nd</sup> Unit		2 <sup>nd</sup> Unit	



# ROCKET - 2<sup>ND</sup> FLOOR

## 1085.124 GR

Some features shown are optional. Your Purchase & Sale Agreement governs, whether items are labeled "optional" in this document or not.



CLG HT SHOWN 8'-0"      CLG HT POSSIBLE 9'-0"

\* Major Change Fee, see website plan page for cost

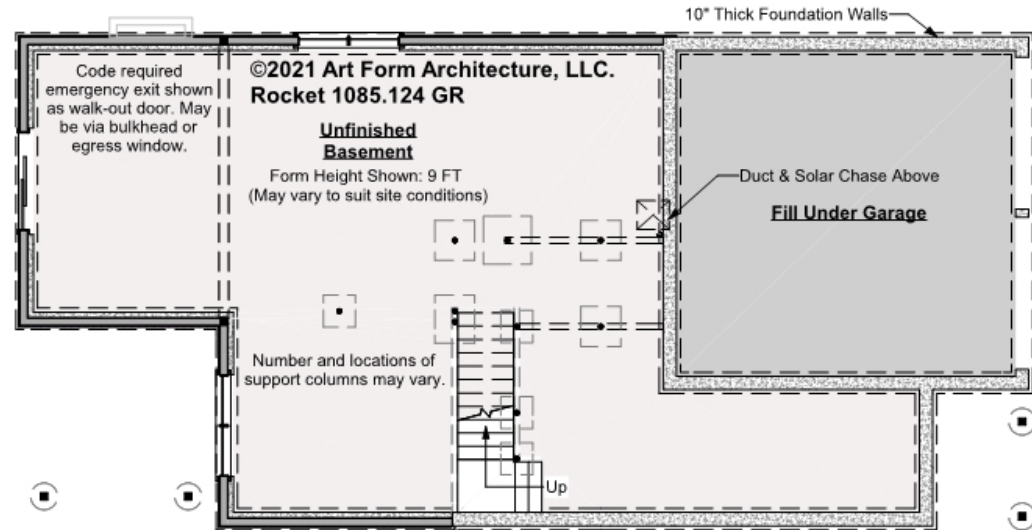
F1 LIVING AREA	1354 FT	F1 BEDROOMS	4	F1 BATHROOMS	2
Main	1354.00 FT	Main	4.00	Main	2.00
Future	FT	Future		Future	
2 <sup>nd</sup> Unit	FT	2 <sup>nd</sup> Unit		2 <sup>nd</sup> Unit	



# ROCKET - BASEMENT

## 1085.124 GR

Some features shown are optional. Your Purchase & Sale Agreement governs, whether items are labeled "optional" in this document or not.



CLG HT SHOWN 8'-1" - 8'-11"

CLG HT POSSIBLE 10' & Up

\* Major Change Fee, see website plan page for cost

F1 LIVING AREA		0 <sup>FT</sup>	F1 BEDROOMS		0	F1 BATHROOMS		0
Main	FT		Main			Main		
Future	FT		Future			Future		
2 <sup>nd</sup> Unit	FT		2 <sup>nd</sup> Unit			2 <sup>nd</sup> Unit		

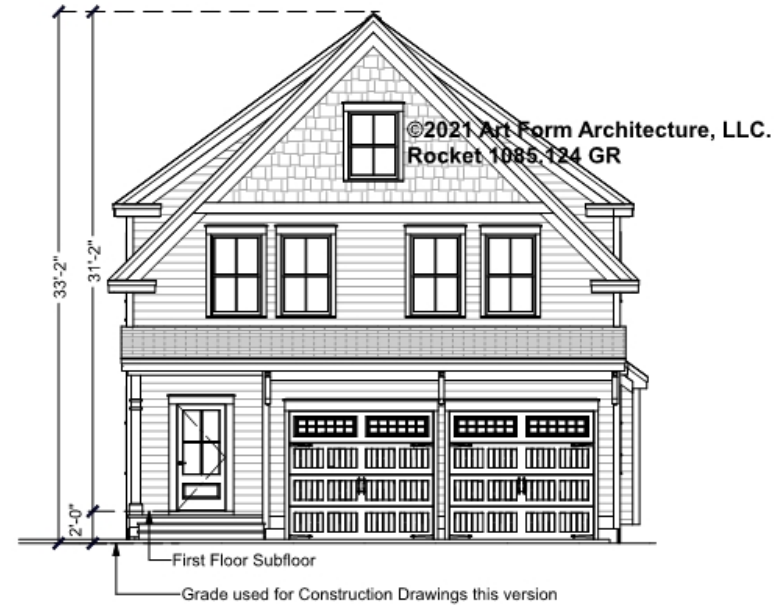


Art Form Architecture, LLC

## ROCKET - FRONT ELEVATION

### 1085.124 GR

Some features shown are optional. Your Purchase & Sale Agreement governs, whether items are labeled "optional" in this document or not.



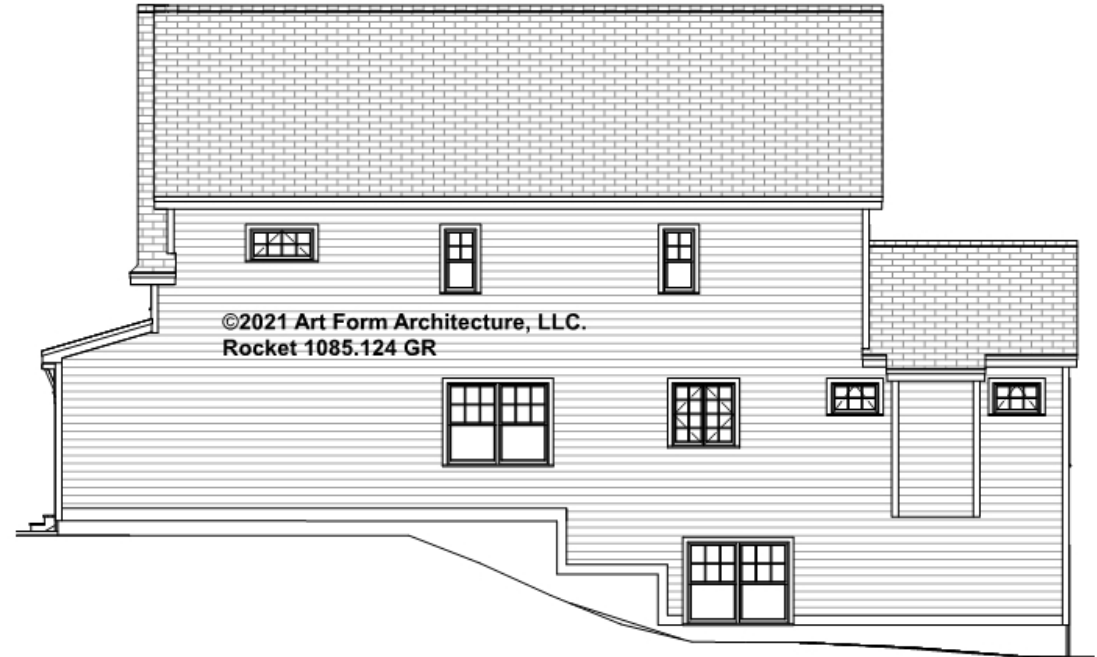


Art Form Architecture, LLC

## ROCKET - RIGHT ELEVATION

### 1085.124 GR

Some features shown are optional. Your Purchase & Sale Agreement governs, whether items are labeled "optional" in this document or not.





Art Form Architecture, LLC

## ROCKET - REAR ELEVATION

### 1085.124 GR

Some features shown are optional. Your Purchase & Sale Agreement governs, whether items are labeled "optional" in this document or not.







Art Form Architecture, LLC

## ROCKET - LEFT ELEVATION

### 1085.124 GR

Some features shown are optional. Your Purchase & Sale Agreement governs, whether items are labeled "optional" in this document or not.







Art Form Architecture, LLC

## ROCKET - REAR RENDER 1085.124 GR

Some features shown are optional. Your Purchase & Sale Agreement governs, whether items are labeled "optional" in this document or not.

