



# RIPLEY

## 794.124 GL

In addition to our Terms and Conditions (the "Terms"), please be aware of the following:

Art Form Architecture, LLC ("Artform") requires that our Drawings be built substantially as designed. Artform will not be obligated by or liable for use of this design with markups as part of any builder agreement. While we attempt to accommodate where possible and reasonable, and where the changes do not denigrate our design, any and all changes to Drawings must be approved in writing by Artform. It is recommended that you have your Drawing updated by Artform prior to attaching any Drawing to any builder agreement. Artform shall not be responsible for the misuse of or unauthorized alterations to any of its Drawings.



Width 78.00 FT

Depth 49.00 FT

Height 28.17 FT

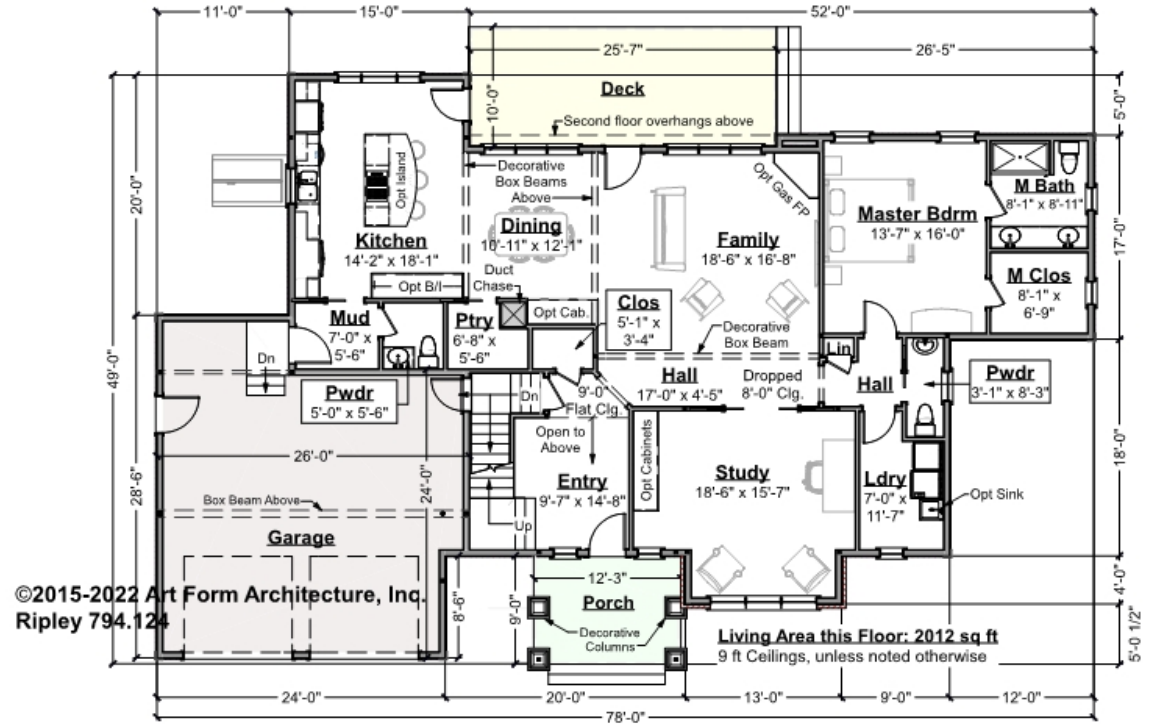
LIVING AREA		BEDROOMS		BATHROOMS	
	3265 FT <sup>2</sup>		6		4.5
Main	3265 FT <sup>2</sup>	Main	4	Main	4
Future	0 FT <sup>2</sup>	Future	2	Future	0.5
2 <sup>nd</sup> Unit	0 FT <sup>2</sup>	2 <sup>nd</sup> Unit	0	2 <sup>nd</sup> Unit	0



# RIPLEY - 1<sup>ST</sup> FLOOR

## 794.124 GL

Some features shown are optional. Your Purchase & Sale Agreement governs, whether items are labeled "optional" in this document or not.



CLG HT SHOWN 9'-0"      CLG HT POSSIBLE 8'-0"

\* Major Change Fee, see website plan page for cost

F1 LIVING AREA	2012 <sup>FT</sup>	F1 BEDROOMS	2	F1 BATHROOMS	2
Main	2012.00 <sup>FT</sup>	Main	1.00	Main	2.00
Future	FT	Future	1.00	Future	
2 <sup>nd</sup> Unit	FT	2 <sup>nd</sup> Unit		2 <sup>nd</sup> Unit	



Art Form Architecture, LLC

## RIPLEY - 1<sup>ST</sup> FLOOR 794.124 GL

Some features shown are optional. Your Purchase & Sale Agreement governs, whether items are labeled "optional" in this document or not.



Kitchen from Dining Room - Additional Image



Art Form Architecture, LLC

## RIPLEY - 1<sup>ST</sup> FLOOR

### 794.124 GL

Some features shown are optional. Your Purchase & Sale Agreement governs, whether items are labeled "optional" in this document or not.



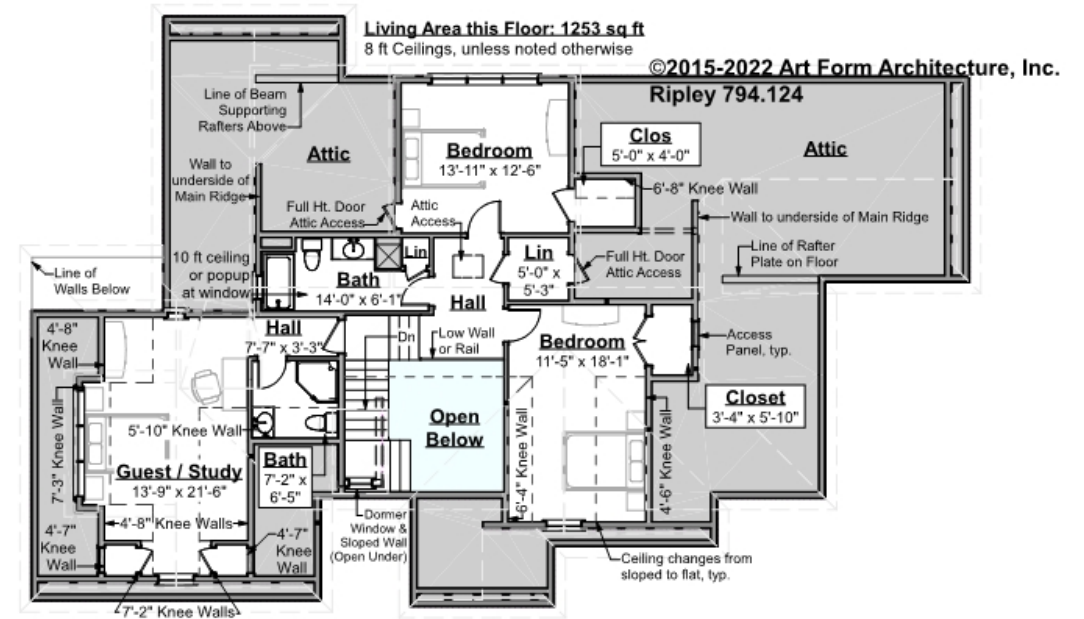
Family Room - Additional Image



# RIPLEY - 2<sup>ND</sup> FLOOR

794.124 GL

Some features shown are optional. Your Purchase & Sale Agreement governs, whether items are labeled "optional" in this document or not.



CLG HT SHOWN 8'-0"

CLG HT POSSIBLE 9'-0"

\* Major Change Fee, see website plan page for cost

F1 LIVING AREA	1253 FT	F1 BEDROOMS	3	F1 BATHROOMS	2
Main	1253.00 FT	Main	3.00	Main	2.00
Future	FT	Future		Future	
2 <sup>nd</sup> Unit	FT	2 <sup>nd</sup> Unit		2 <sup>nd</sup> Unit	

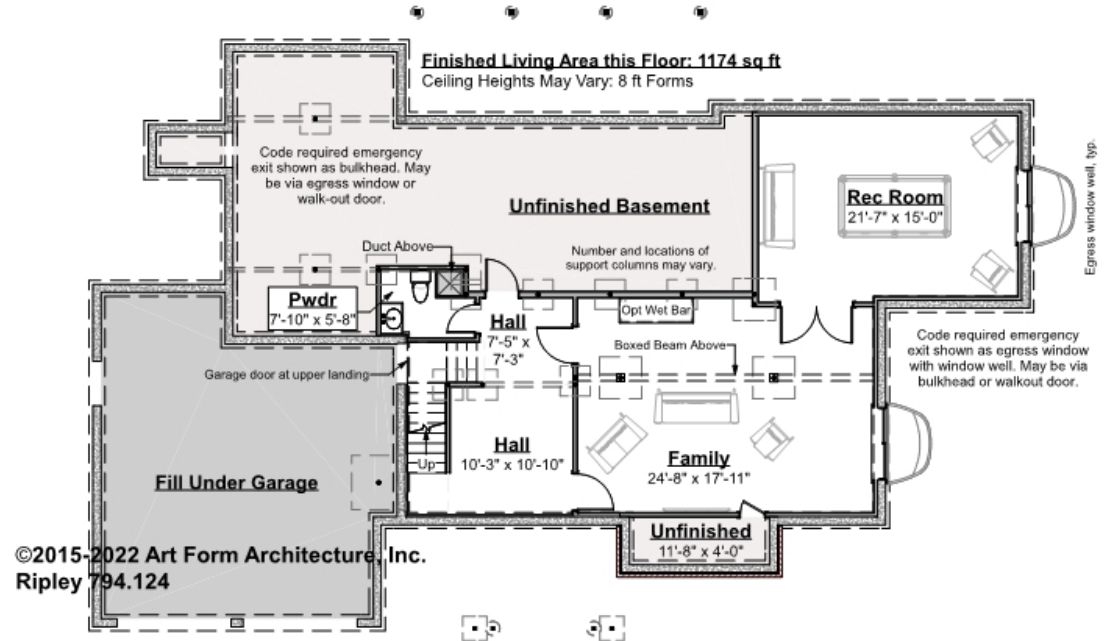


# RIPLEY - BASEMENT

## 794.124 GL

Note: finished basement area is NOT included in main or future Living Area, but IS shown on CDs. We do this so Search doesn't mislead.

Some features shown are optional. Your Purchase & Sale Agreement governs, whether items are labeled "optional" in this document or not.



**CLG HT SHOWN 8'-0"      CLG HT POSSIBLE 9'-0"**

*\* Major Change Fee, see website plan page for cost*

<b>F1 LIVING AREA</b>	0 FT	<b>F1 BEDROOMS</b>	1	<b>F1 BATHROOMS</b>	0.5
Main	0.00 FT	Main		Main	0.00
Future	FT	Future	1.00	Future	0.50
2 <sup>nd</sup> Unit	FT	2 <sup>nd</sup> Unit		2 <sup>nd</sup> Unit	



## RIPLEY - FRONT ELEVATION

### 794.124 GL

Some features shown are optional. Your Purchase & Sale Agreement governs, whether items are labeled "optional" in this document or not.





Art Form Architecture, LLC

## RIPLEY - RIGHT ELEVATION

### 794.124 GL

Some features shown are optional. Your Purchase & Sale Agreement governs, whether items are labeled "optional" in this document or not.







Art Form Architecture, LLC

## RIPLEY - REAR ELEVATION

### 794.124 GL

Some features shown are optional. Your Purchase & Sale Agreement governs, whether items are labeled "optional" in this document or not.



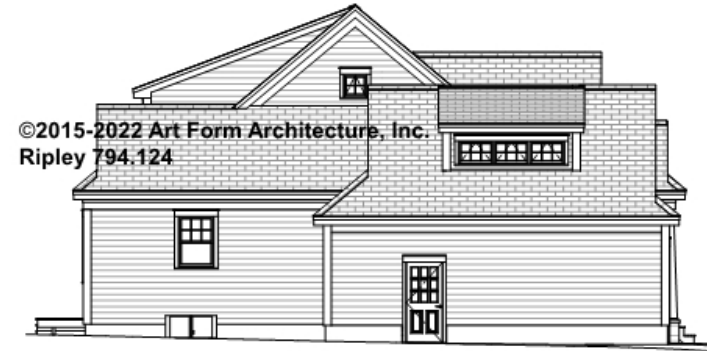


Art Form Architecture, LLC

## RIPLEY - LEFT ELEVATION

### 794.124 GL

Some features shown are optional. Your Purchase & Sale Agreement governs, whether items are labeled "optional" in this document or not.





Art Form Architecture, LLC

## RIPLEY - REAR RENDER

### 794.124 GL

Some features shown are optional. Your Purchase & Sale Agreement governs, whether items are labeled "optional" in this document or not.

