



PORTER

788.124.v5 GL

In addition to our Terms and Conditions (the "Terms"), please be aware of the following:

Art Form Architecture, LLC ("Artform") requires that our Drawings be built substantially as designed. Artform will not be obligated by or liable for use of this design with markups as part of any builder agreement. While we attempt to accommodate where possible and reasonable, and where the changes do not denigrate our design, any and all changes to Drawings must be approved in writing by Artform. It is recommended that you have your Drawing updated by Artform prior to attaching any Drawing to any builder agreement. Artform shall not be responsible for the misuse of or unauthorized alterations to any of its Drawings.



Width 39.00 FT

Depth 54.00 FT

Height 33.25 FT

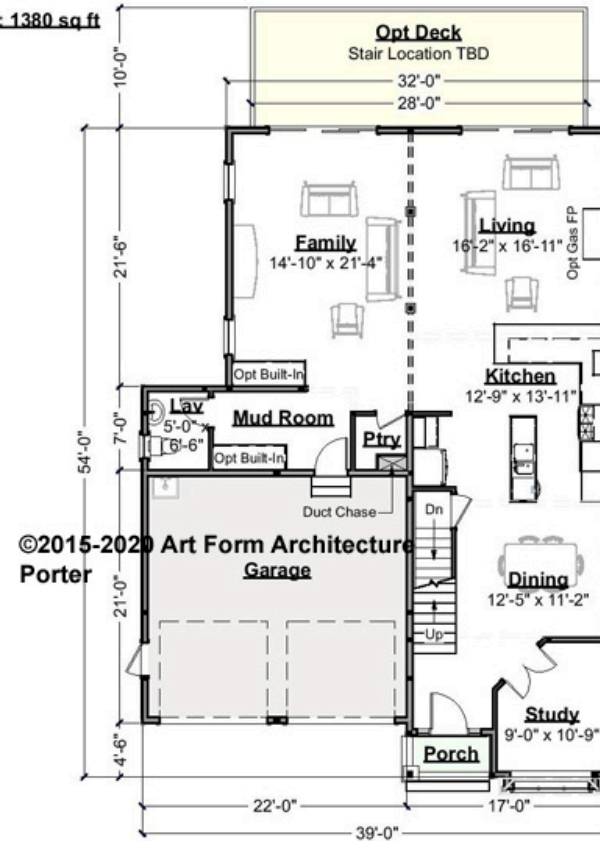
LIVING AREA		BEDROOMS		BATHROOMS	
Main	2900 FT	Main	3	Main	2.5
Future	0 FT	Future	0	Future	0
2 nd Unit	0 FT	2 nd Unit	0	2 nd Unit	0



PORTER - 1ST FLOOR
788.124.v5 GL

Some features shown are optional. Your Purchase & Sale Agreement governs, whether items are labeled "optional" in this document or not.

Living Area This Floor: 1380 sq ft
 9 ft Ceiling Height



CLG HT SHOWN 9'-0" CLG HT POSSIBLE 8'-0"

** Major Change Fee, see website plan page for cost*

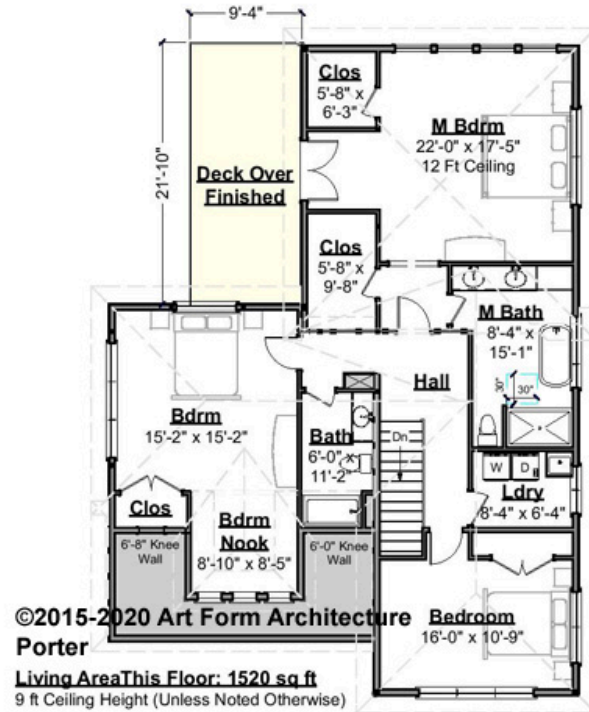
F1 LIVING AREA		F1 BEDROOMS		F1 BATHROOMS	
	1380 ^{FT}		0		0.5
Main	1380.00 ^{FT}	Main	0.00	Main	0.50
Future	0.00 ^{FT}	Future	0.00	Future	0.00
2 nd Unit	0.00 ^{FT}	2 nd Unit	0.00	2 nd Unit	0.00



PORTER - 2ND FLOOR

788.124.v5 GL

Some features shown are optional. Your Purchase & Sale Agreement governs, whether items are labeled "optional" in this document or not.



CLG HT SHOWN 9'-0" CLG HT POSSIBLE 8'-0"

* Major Change Fee, see website plan page for cost

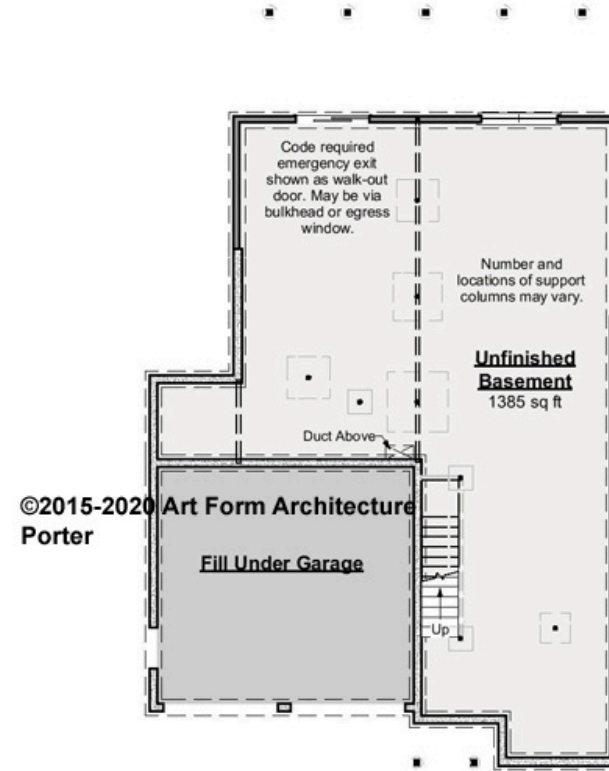
F1 LIVING AREA		F1 BEDROOMS		F1 BATHROOMS	
	1520 ^{FT}		3		2
Main	1520.00 ^{FT}	Main	3.00	Main	2.00
Future	0.00 ^{FT}	Future	0.00	Future	0.00
2 nd Unit	0.00 ^{FT}	2 nd Unit	0.00	2 nd Unit	0.00



PORTER - BASEMENT

788.124.v5 GL

Some features shown are optional. Your Purchase & Sale Agreement governs, whether items are labeled "optional" in this document or not.



CLG HT SHOWN 7'-8" CLG HT POSSIBLE 9'-0"

* Major Change Fee, see website plan page for cost

F1 LIVING AREA		F1 BEDROOMS		F1 BATHROOMS	
	0 FT		0		0
Main	0.00 FT	Main	0.00	Main	0.00
Future	0.00 FT	Future	0.00	Future	0.00
2 nd Unit	0.00 FT	2 nd Unit	0.00	2 nd Unit	0.00



PORTER - FRONT ELEVATION

788.124.v5 GL

Some features shown are optional. Your Purchase & Sale Agreement governs, whether items are labeled "optional" in this document or not.





PORTER - RIGHT ELEVATION

788.124.v5 GL

Some features shown are optional. Your Purchase & Sale Agreement governs, whether items are labeled "optional" in this document or not.



CRS 788.124.v5 GL Porter



PORTER - REAR ELEVATION

788.124.v5 GL

Some features shown are optional. Your Purchase & Sale Agreement governs, whether items are labeled "optional" in this document or not.



CRS 788.124.v5 GL Porter



PORTER - LEFT ELEVATION

788.124.v5 GL

Some features shown are optional. Your Purchase & Sale Agreement governs, whether items are labeled "optional" in this document or not.



CRS 788.124.v5 GL Porter