



Art Form Architecture, LLC

## PORTER 788.124.v2 GL

In addition to our Terms and Conditions (the "Terms"), please be aware of the following:

Art Form Architecture, LLC ("Artform") requires that our Drawings be built substantially as designed. Artform will not be obligated by or liable for use of this design with markups as part of any builder agreement. While we attempt to accommodate where possible and reasonable, and where the changes do not denigrate our design, any and all changes to Drawings must be approved in writing by Artform. It is recommended that you have your Drawing updated by Artform prior to attaching any Drawing to any builder agreement. Artform shall not be responsible for the misuse of or unauthorized alterations to any of its Drawings.



Width 39.00 <sup>FT</sup>

Depth 54.00 <sup>FT</sup>

Height 31.50 <sup>FT</sup>

LIVING AREA	2770 <sup>FT</sup>
Main	2770 <sup>FT</sup>
Future	0 <sup>FT</sup>
2 <sup>nd</sup> Unit	0 <sup>FT</sup>

BEDROOMS	4
Main	3
Future	1
2 <sup>nd</sup> Unit	0

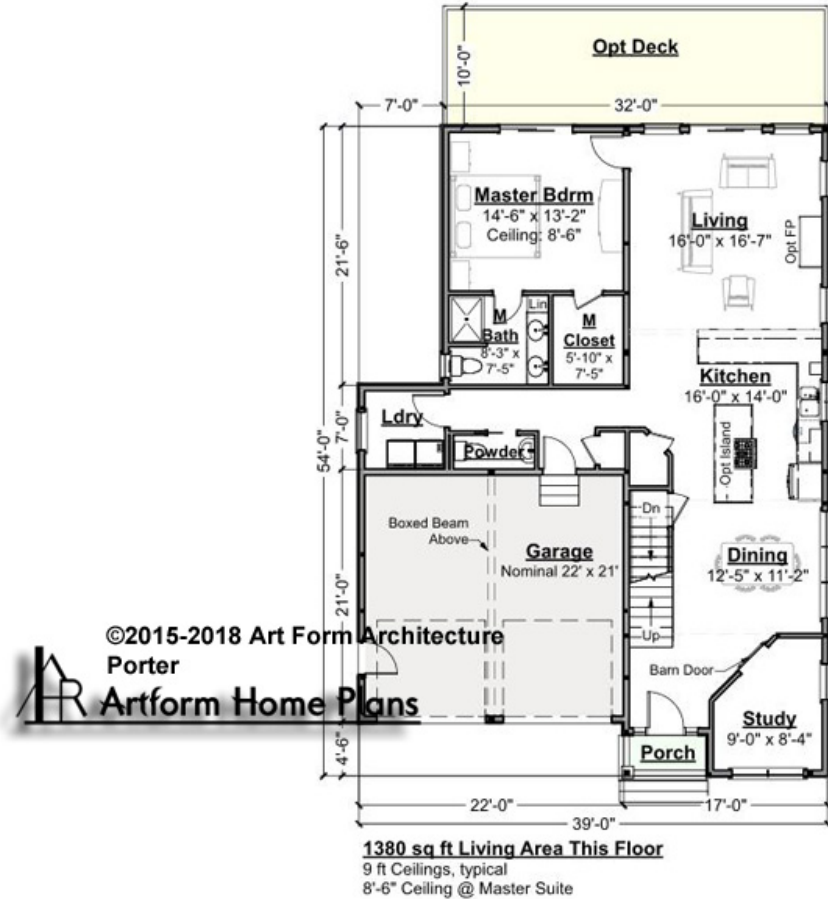
BATHROOMS	3.5
Main	3.5
Future	0
2 <sup>nd</sup> Unit	0



## PORTER - 1<sup>ST</sup> FLOOR

788.124.v2 GL

Some features shown are optional. Your Purchase & Sale Agreement governs, whether items are labeled "optional" in this document or not.



CLG HT SHOWN 9'-0"

CLG HT POSSIBLE 8'-0"

\* Major Change Fee, see website plan page for cost

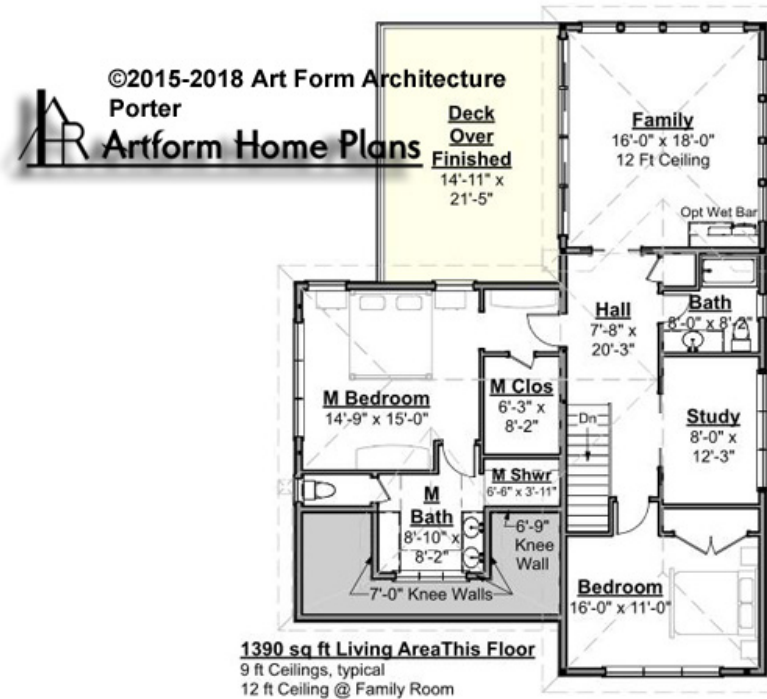
F1 LIVING AREA	1380 <sup>FT</sup>	F1 BEDROOMS	1	F1 BATHROOMS	1.5
Main	1380.00 <sup>FT</sup>	Main	1.00	Main	1.50
Future	0.00 <sup>FT</sup>	Future	0.00	Future	0.00
2 <sup>nd</sup> Unit	0.00 <sup>FT</sup>	2 <sup>nd</sup> Unit	0.00	2 <sup>nd</sup> Unit	0.00



## PORTER - 2<sup>ND</sup> FLOOR

788.124.v2 GL

Some features shown are optional. Your Purchase & Sale Agreement governs, whether items are labeled "optional" in this document or not.



CLG HT SHOWN 9'-0"

CLG HT POSSIBLE 8'-0"

\* Major Change Fee, see website plan page for cost

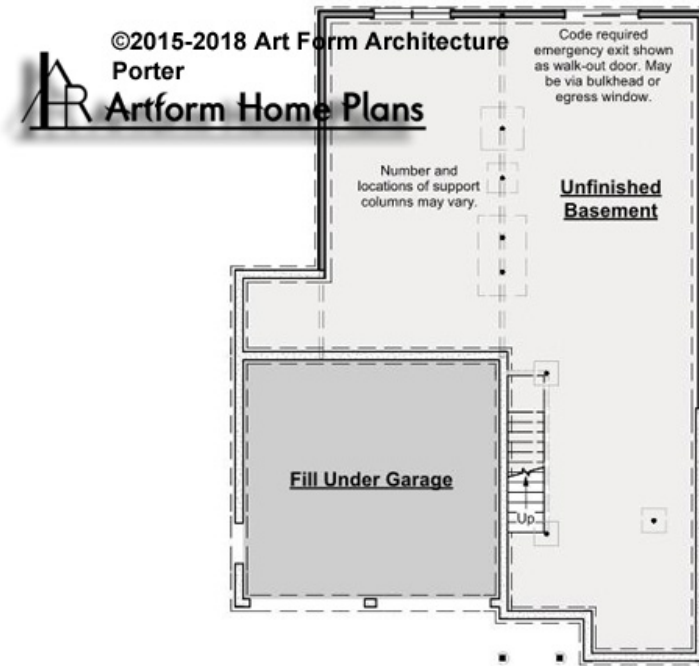
F1 LIVING AREA	1390 <sup>FT</sup>	F1 BEDROOMS	3	F1 BATHROOMS	2
Main	1390.00 <sup>FT</sup>	Main	2.00	Main	2.00
Future	0.00 <sup>FT</sup>	Future	1.00	Future	0.00
2 <sup>nd</sup> Unit	0.00 <sup>FT</sup>	2 <sup>nd</sup> Unit	0.00	2 <sup>nd</sup> Unit	0.00



## PORTER - BASEMENT

788.124.v2 GL

Some features shown are optional. Your Purchase & Sale Agreement governs, whether items are labeled "optional" in this document or not.



CLG HT SHOWN 7'-8"

CLG HT POSSIBLE 9'-0"

\* Major Change Fee, see website plan page for cost

F1 LIVING AREA		0 FT	F1 BEDROOMS		0	F1 BATHROOMS		0
Main		0.00 FT	Main		0.00	Main		0.00
Future		0.00 FT	Future		0.00	Future		0.00
2 <sup>nd</sup> Unit		0.00 FT	2 <sup>nd</sup> Unit		0.00	2 <sup>nd</sup> Unit		0.00

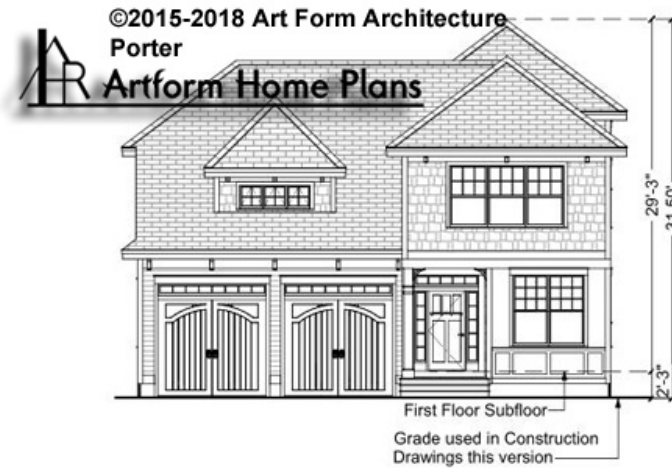


Art Form Architecture, LLC

## PORTER - FRONT ELEVATION

788.124.v2 GL

Some features shown are optional. Your Purchase & Sale Agreement governs, whether items are labeled "optional" in this document or not.



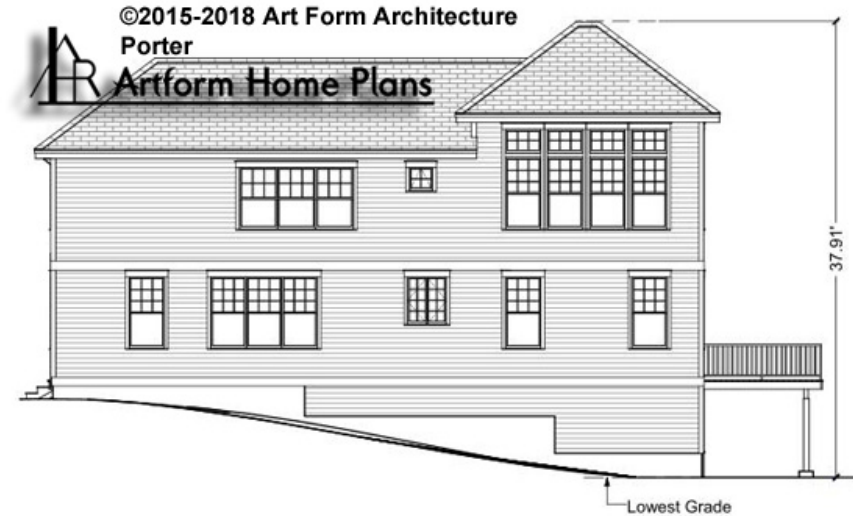


Art Form Architecture, LLC

## PORTER - RIGHT ELEVATION

788.124.v2 GL

Some features shown are optional. Your Purchase & Sale Agreement governs, whether items are labeled "optional" in this document or not.







Art Form Architecture, LLC

## PORTER - REAR ELEVATION

788.124.v2 GL

Some features shown are optional. Your Purchase & Sale Agreement governs, whether items are labeled "optional" in this document or not.





Art Form Architecture, LLC

## PORTER - LEFT ELEVATION

788.124.v2 GL

Some features shown are optional. Your Purchase & Sale Agreement governs, whether items are labeled "optional" in this document or not.

