



## POOL HOUSE

739.500.v4

In addition to our Terms and Conditions (the "Terms"), please be aware of the following:

Art Form Architecture, LLC ("Artform") requires that our Drawings be built substantially as designed. Artform will not be obligated by or liable for use of this design with markups as part of any builder agreement. While we attempt to accommodate where possible and reasonable, and where the changes do not denigrate our design, any and all changes to Drawings must be approved in writing by Artform. It is recommended that you have your Drawing updated by Artform prior to attaching any Drawing to any builder agreement. Artform shall not be responsible for the misuse of or unauthorized alterations to any of its Drawings.



Width 38.00 FT

Depth 40.00 FT

Height 20.25 FT

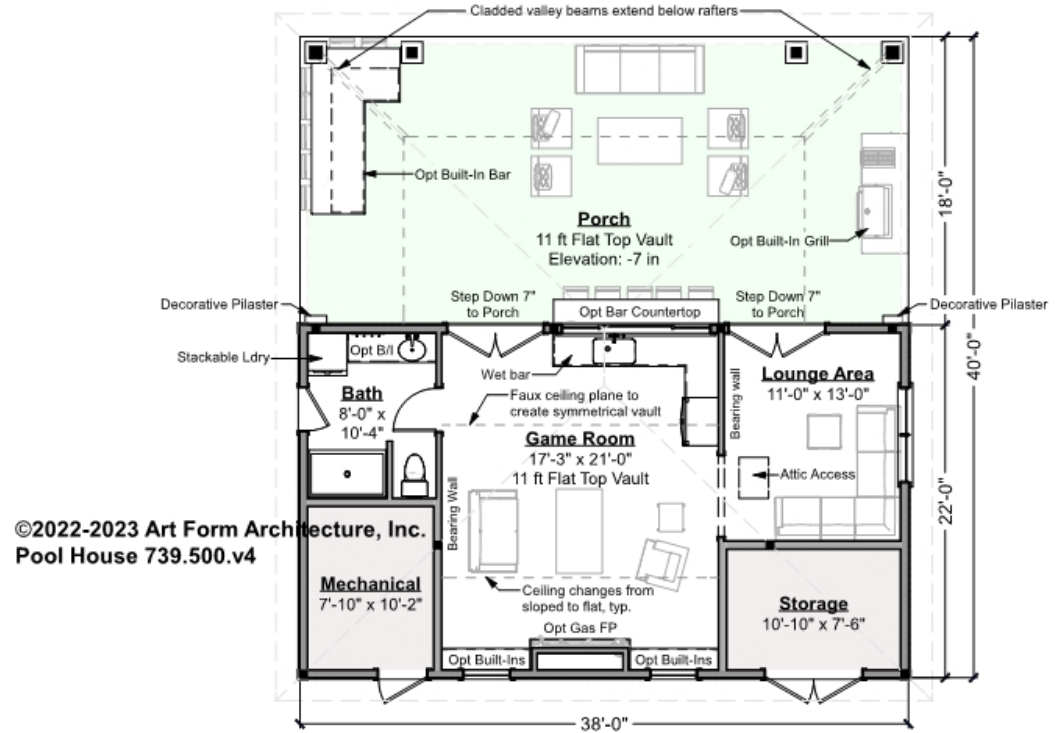
LIVING AREA		BEDROOMS		BATHROOMS	
	655 FT		0		1
Main	655 FT	Main	0	Main	1
Future	0 FT	Future	0	Future	0
2 <sup>nd</sup> Unit	0 FT	2 <sup>nd</sup> Unit	0	2 <sup>nd</sup> Unit	0



# POOL HOUSE - 1<sup>ST</sup> FLOOR

## 739.500.v4

Some features shown are optional. Your Purchase & Sale Agreement governs, whether items are labeled "optional" in this document or not.



©2022-2023 Art Form Architecture, Inc.  
Pool House 739.500.v4

**Living Area this Floor: 655 sq ft**  
9 ft Ceilings, unless noted otherwise

**CLG HT SHOWN 9'-0"      CLG HT POSSIBLE 8'-0"**

*\* Major Change Fee, see website plan page for cost*

F1 LIVING AREA	655 <sup>FT</sup>	F1 BEDROOMS	0	F1 BATHROOMS	1
Main	655.00 <sup>FT</sup>	Main	0.00	Main	1.00
Future	FT	Future		Future	
2 <sup>nd</sup> Unit	FT	2 <sup>nd</sup> Unit		2 <sup>nd</sup> Unit	



Art Form Architecture, LLC

## POOL HOUSE - FRONT ELEVATION

### 739.500.v4

Some features shown are optional. Your Purchase & Sale Agreement governs, whether items are labeled "optional" in this document or not.



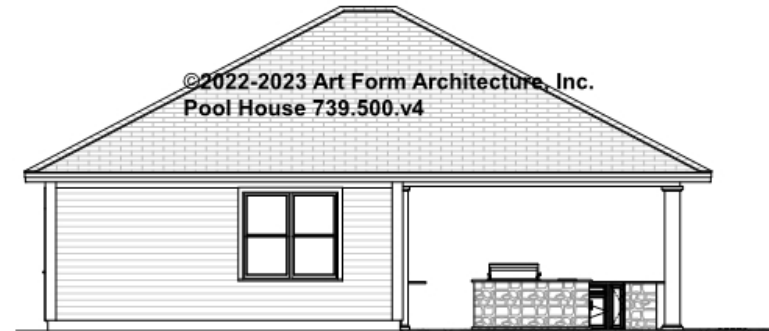


Art Form Architecture, LLC

## POOL HOUSE - RIGHT ELEVATION

### 739.500.v4

Some features shown are optional. Your Purchase & Sale Agreement governs, whether items are labeled "optional" in this document or not.





Art Form Architecture, LLC

## POOL HOUSE - REAR ELEVATION

### 739.500.v4

Some features shown are optional. Your Purchase & Sale Agreement governs, whether items are labeled "optional" in this document or not.





Art Form Architecture, LLC

## POOL HOUSE - LEFT ELEVATION

739.500.v4

Some features shown are optional. Your Purchase & Sale Agreement governs, whether items are labeled "optional" in this document or not.





Art Form Architecture, LLC

## POOL HOUSE - REAR RENDER

739.500.v4

Some features shown are optional. Your Purchase & Sale Agreement governs, whether items are labeled "optional" in this document or not.

