



# PEPPERCORN CLASSIC WITH WING 975.127.v3 GL

This plan is Tier 2 because original was for Portland Maine that doesn't allow us to give you the choices we normally give. Tier 2 gives us the time to add that back in.

In addition to our Terms and Conditions (the "Terms"), please be aware of the following:

Art Form Architecture, LLC ("Artform") requires that our Drawings be built substantially as designed. Artform will not be obligated by or liable for use of this design with markups as part of any builder agreement. While we attempt to accommodate where possible and reasonable, and where the changes do not denigrate our design, any and all changes to Drawings must be approved in writing by Artform. It is recommended that you have your Drawing updated by Artform prior to attaching any Drawing to any builder agreement. Artform shall not be responsible for the misuse of or unauthorized alterations to any of its Drawings.



Width 67.00 FT

Depth 30.60 FT

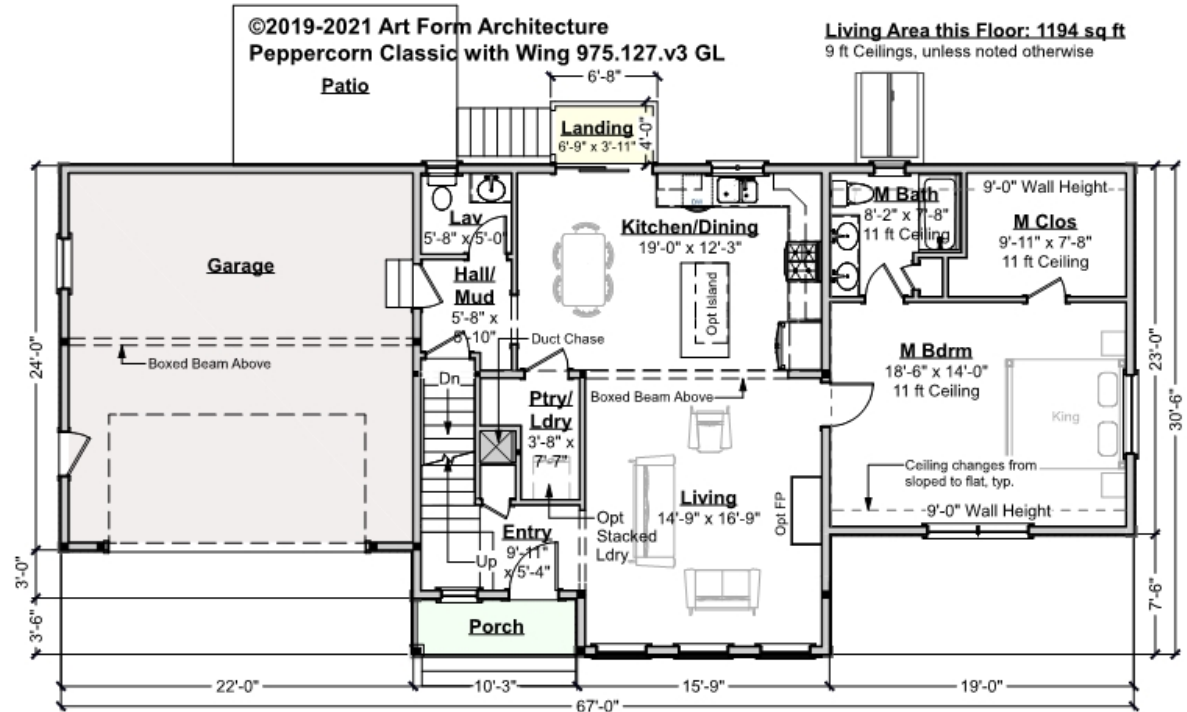
Height 25.66 FT

| LIVING AREA          |         | BEDROOMS             |   | BATHROOMS            |     |
|----------------------|---------|----------------------|---|----------------------|-----|
|                      | 2294 FT |                      | 3 |                      | 2.5 |
| Main                 | 2294 FT | Main                 | 3 | Main                 | 2.5 |
| Future               | 0 FT    | Future               | 0 | Future               | 0   |
| 2 <sup>nd</sup> Unit | 0 FT    | 2 <sup>nd</sup> Unit | 0 | 2 <sup>nd</sup> Unit | 0   |



**PEPPERCORN CLASSIC WITH WING -  
1<sup>ST</sup> FLOOR  
975.127.v3 GL**

Some features shown are optional. Your Purchase & Sale Agreement governs, whether items are labeled "optional" in this document or not.



**CLG HT SHOWN 9'-0"      CLG HT POSSIBLE 9'-0"**

*\* Major Change Fee, see website plan page for cost*

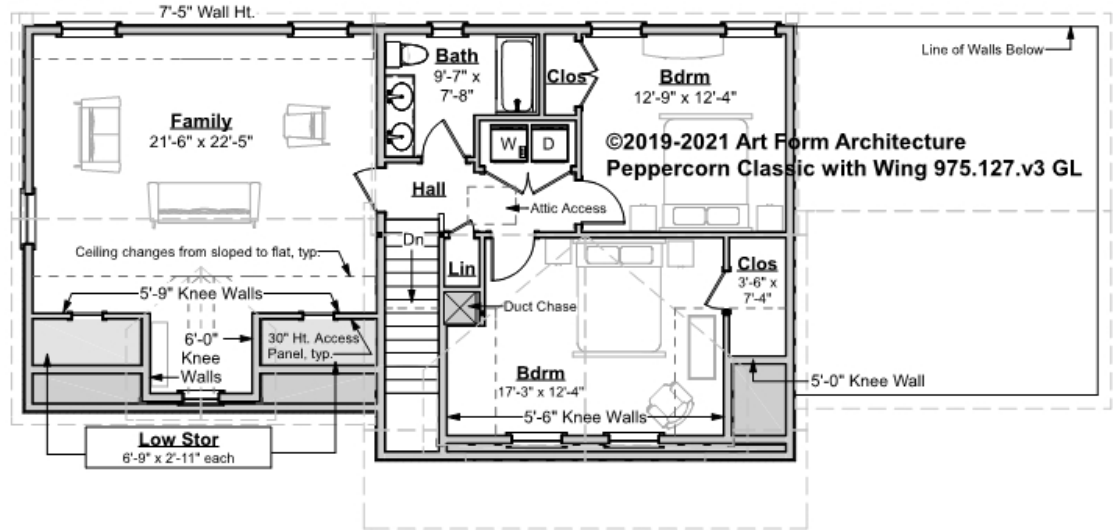
| <b>F1 LIVING AREA</b> | 1194 <sup>FT</sup>    | <b>F1 BEDROOMS</b>   | 1    | <b>F1 BATHROOMS</b>  | 1.5  |
|-----------------------|-----------------------|----------------------|------|----------------------|------|
| Main                  | 1194.00 <sup>FT</sup> | Main                 | 1.00 | Main                 | 1.50 |
| Future                | 0.00 <sup>FT</sup>    | Future               | 0.00 | Future               | 0.00 |
| 2 <sup>nd</sup> Unit  | 0.00 <sup>FT</sup>    | 2 <sup>nd</sup> Unit | 0.00 | 2 <sup>nd</sup> Unit | 0.00 |



**PEPPERCORN CLASSIC WITH WING -  
2<sup>ND</sup> FLOOR  
975.127.v3 GL**

Some features shown are optional. Your Purchase & Sale Agreement governs, whether items are labeled "optional" in this document or not.

**Living Area this Floor: 1100 sq ft**  
8 ft Ceilings



**CLG HT SHOWN 8'-0"      CLG HT POSSIBLE 9'-0"**

*\* Major Change Fee, see website plan page for cost*

| F1 LIVING AREA       |                       | F1 BEDROOMS          |      | F1 BATHROOMS         |      |
|----------------------|-----------------------|----------------------|------|----------------------|------|
| Main                 | 1100.00 <sup>FT</sup> | Main                 | 2.00 | Main                 | 1.00 |
| Future               | 0.00 <sup>FT</sup>    | Future               | 0.00 | Future               | 0.00 |
| 2 <sup>nd</sup> Unit | 0.00 <sup>FT</sup>    | 2 <sup>nd</sup> Unit | 0.00 | 2 <sup>nd</sup> Unit | 0.00 |

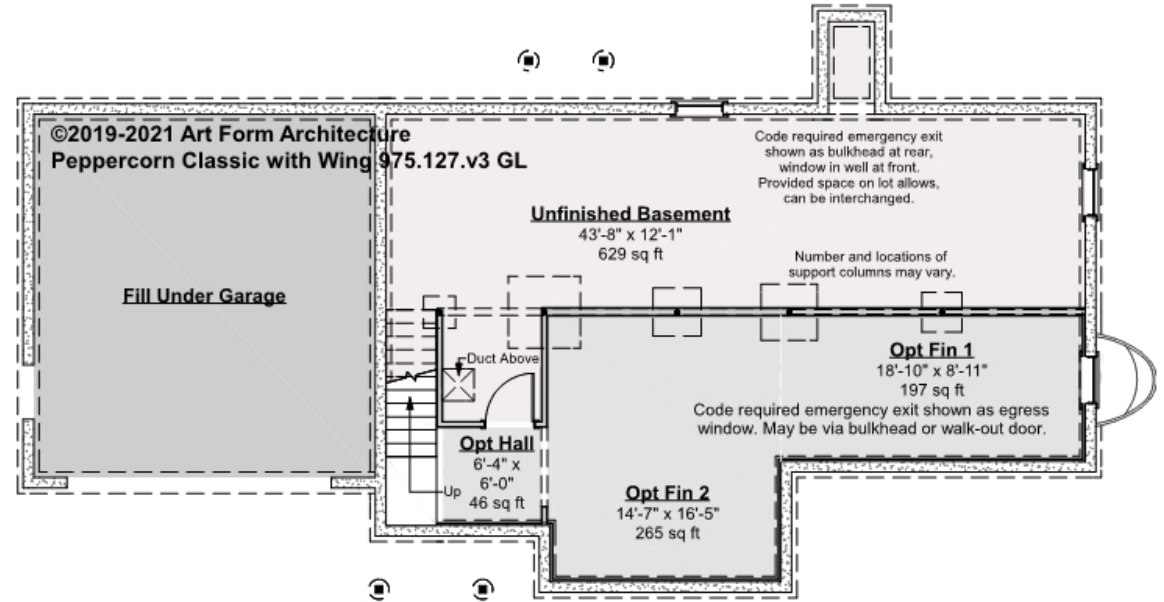


# PEPPERCORN CLASSIC WITH WING - BASEMENT

975.127.v3 GL

The construction drawings show this lower level as finished. We don't include that in our data chart so Search isn't misleading. Everybody knows you can finish a basement!

Some features shown are optional. Your Purchase & Sale Agreement governs, whether items are labeled "optional" in this document or not.



CLG HT SHOWN 7'-8"      CLG HT POSSIBLE 9'-0"

\* Major Change Fee, see website plan page for cost

| F1 LIVING AREA       | 0 FT    | F1 BEDROOMS          | 0    | F1 BATHROOMS         | 0    |
|----------------------|---------|----------------------|------|----------------------|------|
| Main                 | 0.00 FT | Main                 | 0.00 | Main                 | 0.00 |
| Future               | FT      | Future               | 0.00 | Future               | 0.00 |
| 2 <sup>nd</sup> Unit | 0.00 FT | 2 <sup>nd</sup> Unit | 0.00 | 2 <sup>nd</sup> Unit | 0.00 |



Art Form Architecture, LLC

## PEPPERCORN CLASSIC WITH WING - FRONT ELEVATION

975.127.v3 GL

Some features shown are optional. Your Purchase & Sale Agreement governs, whether items are labeled "optional" in this document or not.



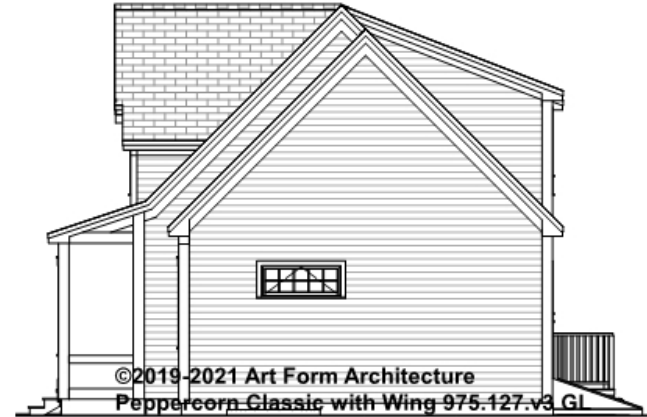


Art Form Architecture, LLC

## PEPPERCORN CLASSIC WITH WING - RIGHT ELEVATION

975.127.v3 GL

—  
Some features shown are optional. Your Purchase & Sale Agreement governs, whether items are labeled "optional" in this document or not.





Art Form Architecture, LLC

## PEPPERCORN CLASSIC WITH WING - REAR ELEVATION

975.127.v3 GL

Some features shown are optional. Your Purchase & Sale Agreement governs, whether items are labeled "optional" in this document or not.





Art Form Architecture, LLC

## PEPPERCORN CLASSIC WITH WING - LEFT ELEVATION

975.127.v3 GL

—  
Some features shown are optional. Your Purchase & Sale Agreement governs, whether items are labeled "optional" in this document or not.

