



# PAYTON

## 1008.127 GR

Note - this design has not yet been built. It's here to offer a starting point for customization. It's priced so that changes that do not increase the size significantly will be at no additional charge. Hourly design fees will apply if you make changes.

In addition to our Terms and Conditions (the "Terms"), please be aware of the following:

Art Form Architecture, LLC ("Artform") requires that our Drawings be built substantially as designed. Artform will not be obligated by or liable for use of this design with markups as part of any builder agreement. While we attempt to accommodate where possible and reasonable, and where the changes do not denigrate our design, any and all changes to Drawings must be approved in writing by Artform. It is recommended that you have your Drawing updated by Artform prior to attaching any Drawing to any builder agreement. Artform shall not be responsible for the misuse of or unauthorized alterations to any of its Drawings.



Width 89.50 FT

Depth 79.00 FT

Height 28.10 FT

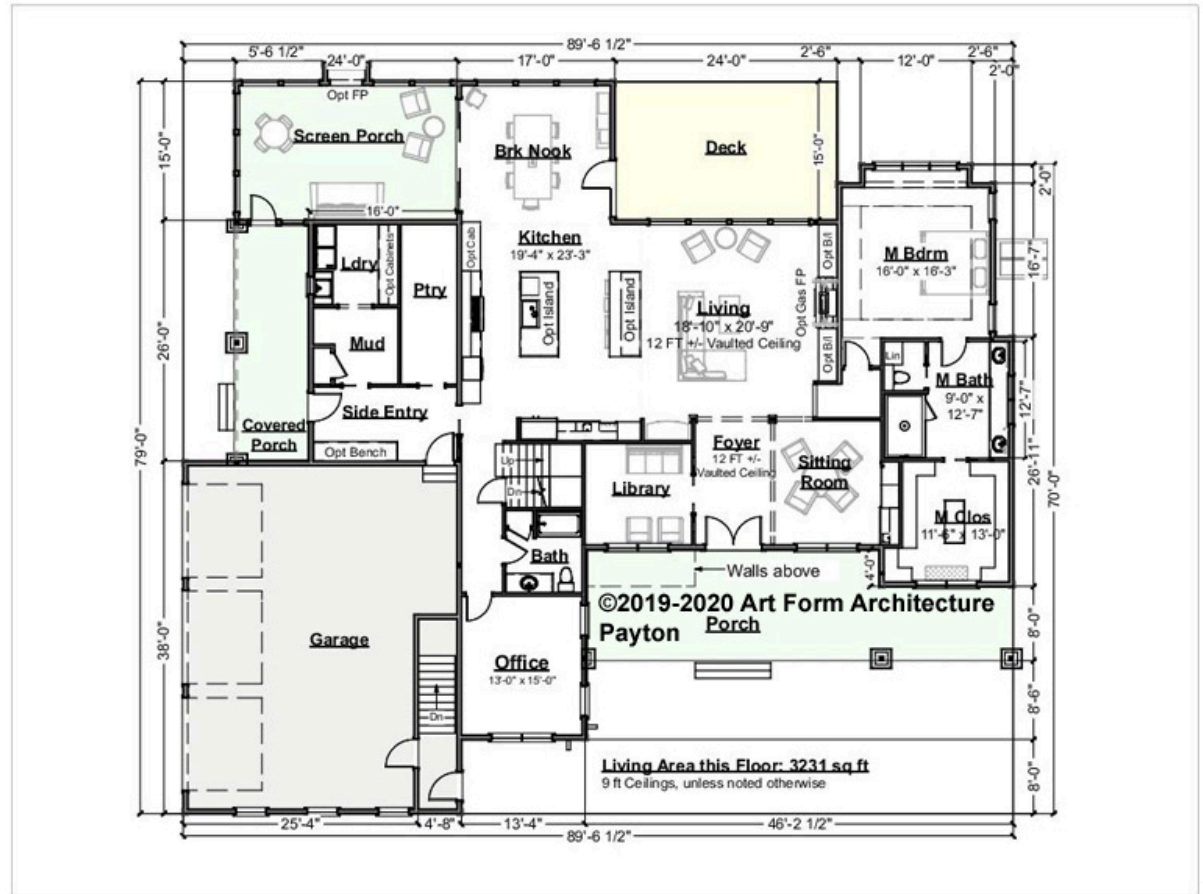
LIVING AREA		BEDROOMS		BATHROOMS	
	4702 FT		4		5
Main	4702 FT	Main	4	Main	5
Future	0 FT	Future	0	Future	0
2 <sup>nd</sup> Unit	0 FT	2 <sup>nd</sup> Unit	0	2 <sup>nd</sup> Unit	0



# PAYTON - 1<sup>ST</sup> FLOOR

## 1008.127 GR

Some features shown are optional. Your Purchase & Sale Agreement governs, whether items are labeled "optional" in this document or not.



CLG HT SHOWN 9'-0"      CLG HT POSSIBLE 9'-0"

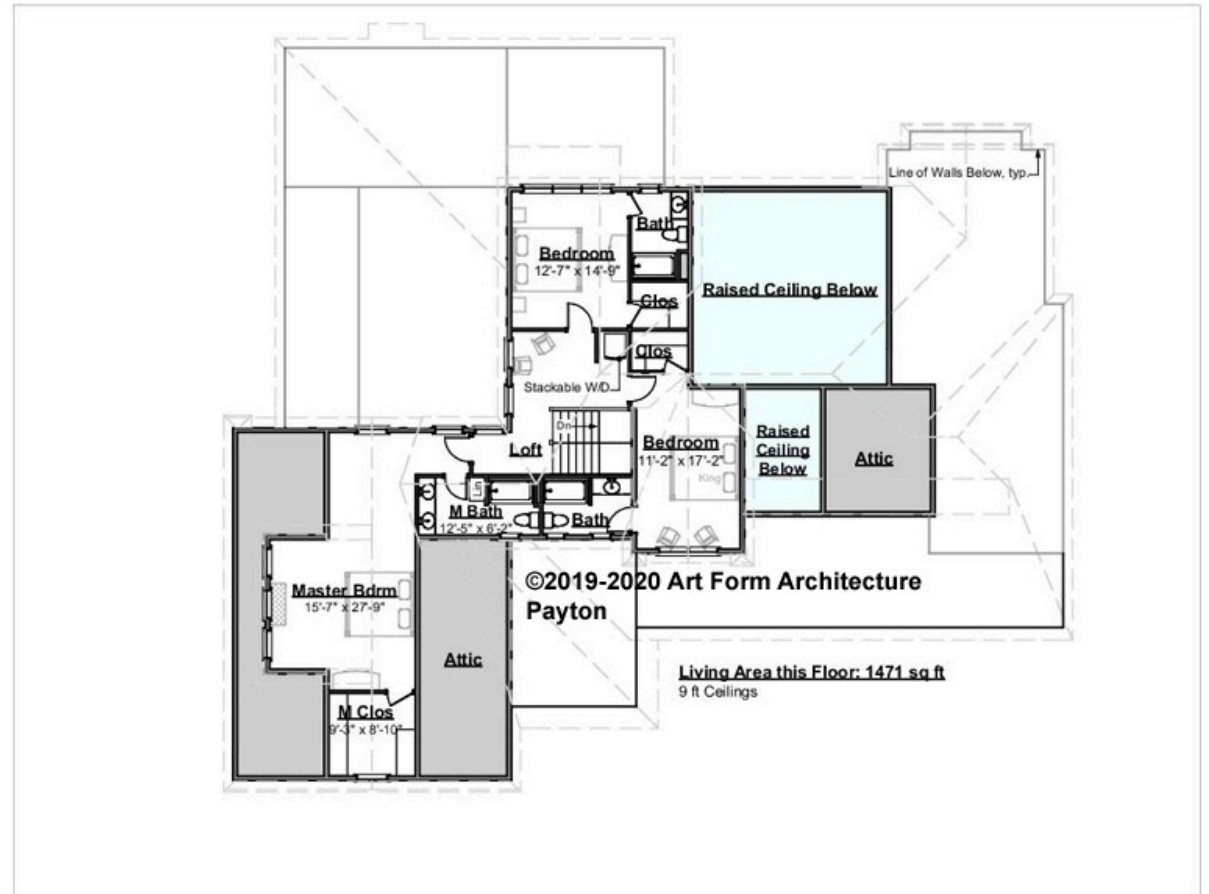
\* Major Change Fee, see website plan page for cost

F1 LIVING AREA	3231 <sup>FT</sup>	F1 BEDROOMS	1	F1 BATHROOMS	2
Main	3231.00 <sup>FT</sup>	Main	1.00	Main	2.00
Future	0.00 <sup>FT</sup>	Future	0.00	Future	0.00
2 <sup>nd</sup> Unit	0.00 <sup>FT</sup>	2 <sup>nd</sup> Unit	0.00	2 <sup>nd</sup> Unit	0.00



**PAYTON - 2<sup>ND</sup> FLOOR**  
**1008.127 GR**

Some features shown are optional. Your Purchase & Sale Agreement governs, whether items are labeled "optional" in this document or not.



**CLG HT SHOWN 9'-0"      CLG HT POSSIBLE 9'-0"**

*\* Major Change Fee, see website plan page for cost*

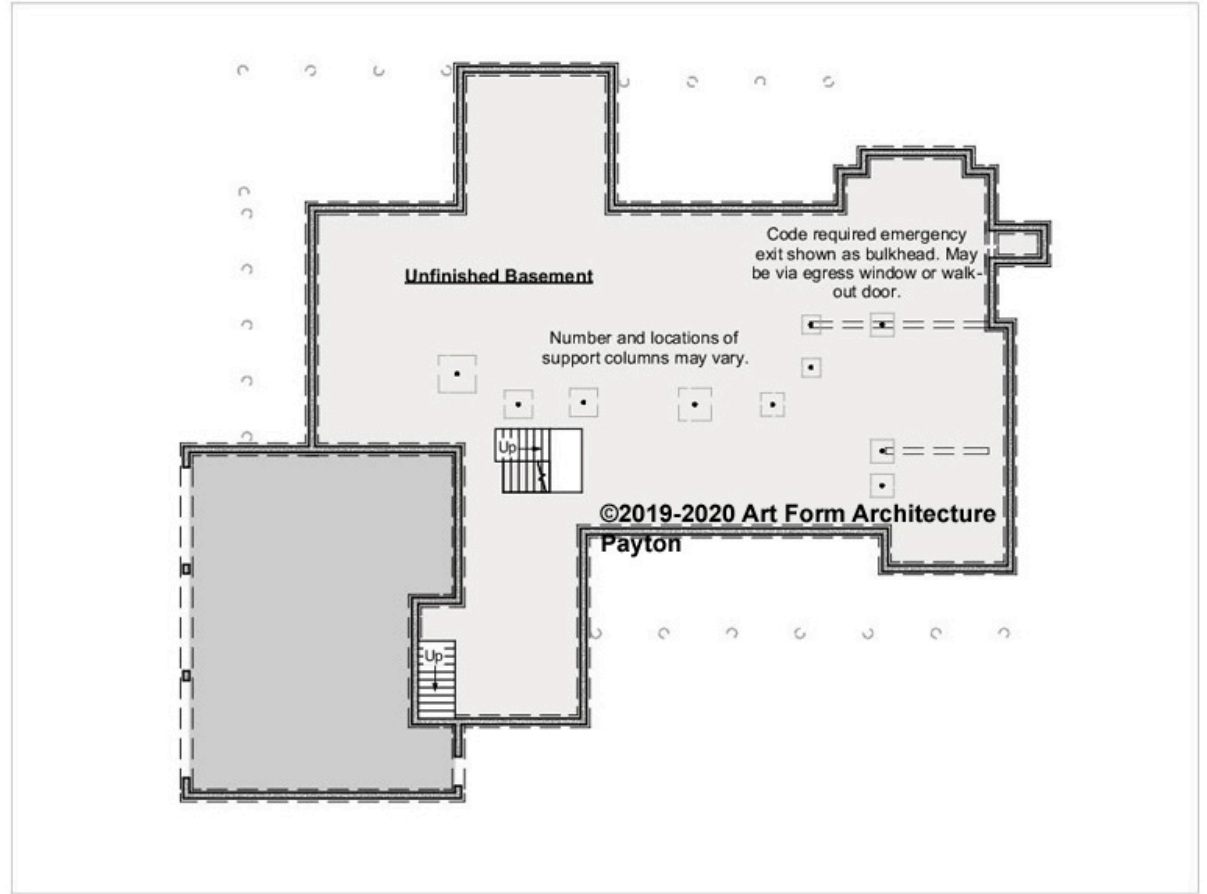
<b>F1 LIVING AREA</b>	<b>1471<sup>FT</sup></b>	<b>F1 BEDROOMS</b>	<b>3</b>	<b>F1 BATHROOMS</b>	<b>3</b>
Main	1471.00 <sup>FT</sup>	Main	3.00	Main	3.00
Future	0.00 <sup>FT</sup>	Future	0.00	Future	0.00
2 <sup>nd</sup> Unit	0.00 <sup>FT</sup>	2 <sup>nd</sup> Unit	0.00	2 <sup>nd</sup> Unit	0.00



# PAYTON - BASEMENT

## 1008.127 GR

Some features shown are optional. Your Purchase & Sale Agreement governs, whether items are labeled "optional" in this document or not.



CLG HT SHOWN 7'-8"      CLG HT POSSIBLE -

\* Major Change Fee, see website plan page for cost

F1 LIVING AREA	0 FT	F1 BEDROOMS	0	F1 BATHROOMS	0
Main	0.00 FT	Main	0.00	Main	0.00
Future	0.00 FT	Future	0.00	Future	0.00
2 <sup>nd</sup> Unit	0.00 FT	2 <sup>nd</sup> Unit	0.00	2 <sup>nd</sup> Unit	0.00



## PAYTON - FRONT ELEVATION

### 1008.127 GR

Some features shown are optional. Your Purchase & Sale Agreement governs, whether items are labeled "optional" in this document or not.



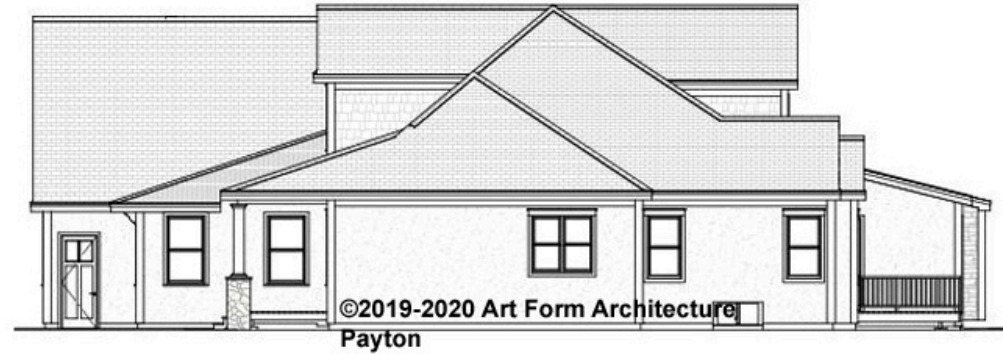


Art Form Architecture, LLC

## PAYTON - RIGHT ELEVATION

### 1008.127 GR

Some features shown are optional. Your Purchase & Sale Agreement governs, whether items are labeled "optional" in this document or not.





Art Form Architecture, LLC

## PAYTON - REAR ELEVATION

### 1008.127 GR

Some features shown are optional. Your Purchase & Sale Agreement governs, whether items are labeled "optional" in this document or not.





Art Form Architecture, LLC

## PAYTON - LEFT ELEVATION

1008.127 GR

Some features shown are optional. Your Purchase & Sale Agreement governs, whether items are labeled "optional" in this document or not.

