



PARKIN

817.124.v4 GL

Reverse plan available.

In addition to our Terms and Conditions (the "Terms"), please be aware of the following:

Art Form Architecture, LLC ("Artform") requires that our Drawings be built substantially as designed. Artform will not be obligated by or liable for use of this design with markups as part of any builder agreement. While we attempt to accommodate where possible and reasonable, and where the changes do not denigrate our design, any and all changes to Drawings must be approved in writing by Artform. It is recommended that you have your Drawing updated by Artform prior to attaching any Drawing to any builder agreement. Artform shall not be responsible for the misuse of or unauthorized alterations to any of its Drawings.



Width 58.00 FT

Depth 47.00 FT

Height 32.46 FT

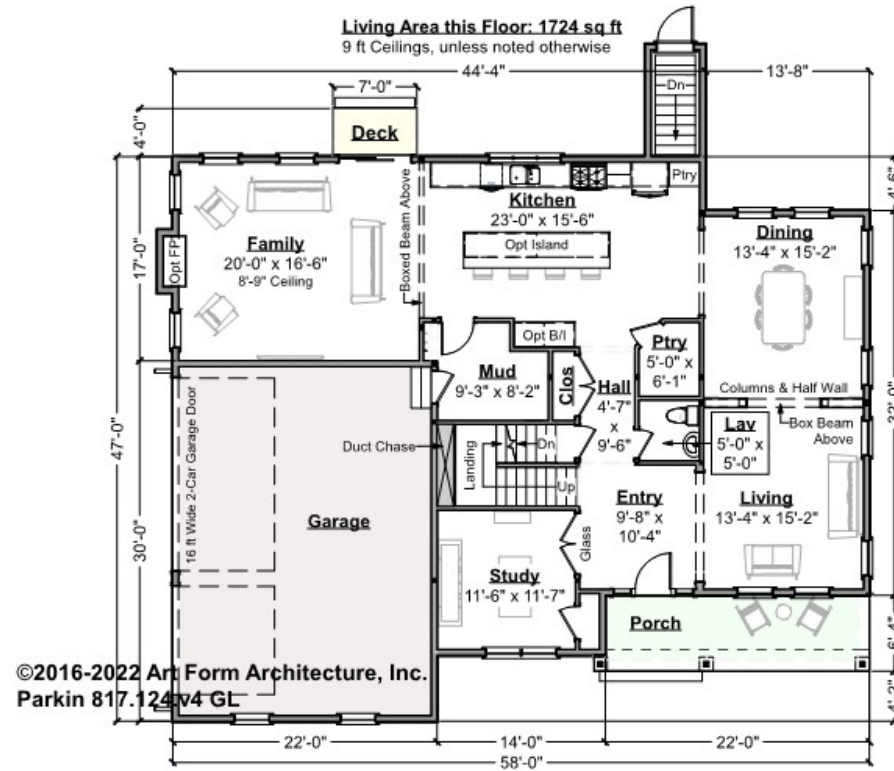
LIVING AREA		BEDROOMS		BATHROOMS	
	3550 FT		6		3.5
Main	3550 FT	Main	4	Main	3.5
Future	0 FT	Future	2	Future	0
2 nd Unit	0 FT	2 nd Unit	0	2 nd Unit	0



PARKIN - 1ST FLOOR

817.124.v4 GL

Some features shown are optional. Your Purchase & Sale Agreement governs, whether items are labeled "optional" in this document or not.



©2016-2022 Art Form Architecture, Inc.
Parkin 817.124.v4 GL

CLG HT SHOWN 9'-0" CLG HT POSSIBLE 8'-0"

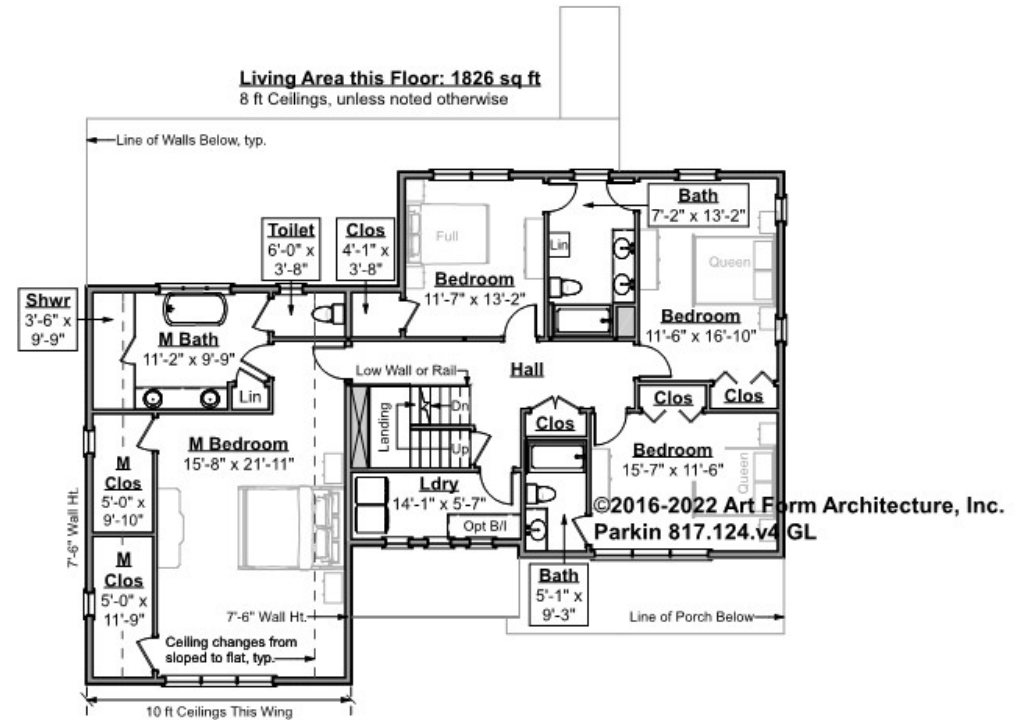
* Major Change Fee, see website plan page for cost

F1 LIVING AREA	1724 FT	F1 BEDROOMS	2	F1 BATHROOMS	0.5
Main	1724.00 FT	Main		Main	0.50
Future	FT	Future	2.00	Future	
2 nd Unit	FT	2 nd Unit		2 nd Unit	



PARKIN - 2ND FLOOR
817.124.v4 GL

Some features shown are optional. Your Purchase & Sale Agreement governs, whether items are labeled "optional" in this document or not.



CLG HT SHOWN 8'-0" CLG HT POSSIBLE 9'-0"

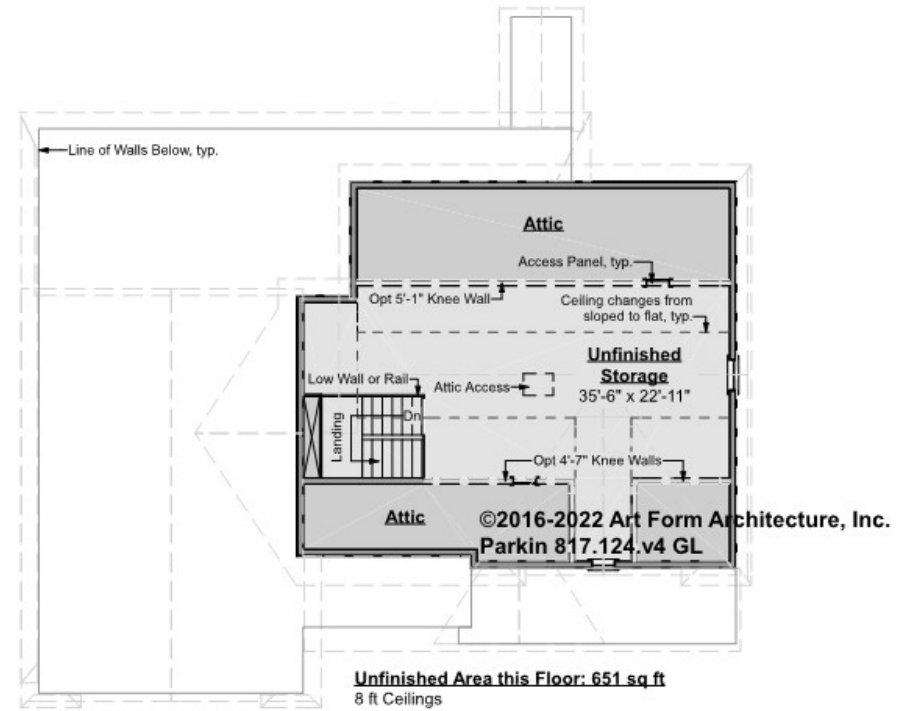
** Major Change Fee, see website plan page for cost*

F1 LIVING AREA	1826 FT	F1 BEDROOMS	4	F1 BATHROOMS	3
Main	1826.00 FT	Main	4.00	Main	3.00
Future	FT	Future		Future	
2 nd Unit	FT	2 nd Unit		2 nd Unit	



PARKIN - 3RD FLOOR
817.124.v4 GL

Some features shown are optional. Your Purchase & Sale Agreement governs, whether items are labeled "optional" in this document or not.



CLG HT SHOWN 8'-0" CLG HT POSSIBLE 8'-0"

** Major Change Fee, see website plan page for cost*

F1 LIVING AREA		F1 BEDROOMS		F1 BATHROOMS	
0 ^{FT}		0		0	
Main	FT	Main		Main	
Future	FT	Future		Future	
2 nd Unit	FT	2 nd Unit		2 nd Unit	

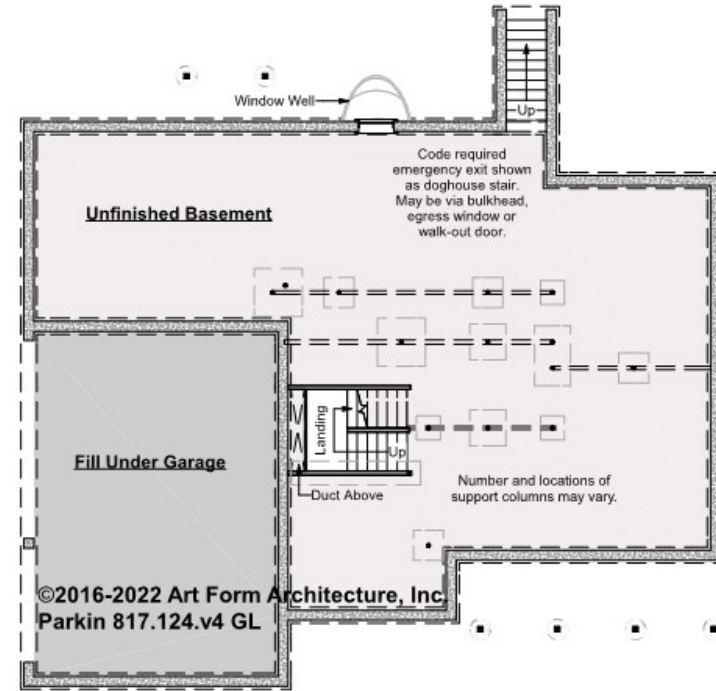


PARKIN - BASEMENT

817.124.v4 GL

Note: 10" thick foundation walls shown.

Some features shown are optional. Your Purchase & Sale Agreement governs, whether items are labeled "optional" in this document or not.



CLG HT SHOWN 7'-8" CLG HT POSSIBLE 9'-0"

* Major Change Fee, see website plan page for cost

F1 LIVING AREA		0 FT	F1 BEDROOMS		0	F1 BATHROOMS		0
Main	FT		Main			Main		
Future	FT		Future			Future		
2 nd Unit	FT		2 nd Unit			2 nd Unit		



PARKIN - FRONT ELEVATION

817.124.v4 GL

Some features shown are optional. Your Purchase & Sale Agreement governs, whether items are labeled "optional" in this document or not.





Art Form Architecture, LLC

PARKIN - RIGHT ELEVATION

817.124.v4 GL

Some features shown are optional. Your Purchase & Sale Agreement governs, whether items are labeled "optional" in this document or not.



Consult Code Officer
about applicability of 20
ft sill rule in NFPA 101.



Art Form Architecture, LLC

PARKIN - REAR ELEVATION

817.124.v4 GL

Some features shown are optional. Your Purchase & Sale Agreement governs, whether items are labeled "optional" in this document or not.





Art Form Architecture, LLC

PARKIN - LEFT ELEVATION

817.124.v4 GL

Some features shown are optional. Your Purchase & Sale Agreement governs, whether items are labeled "optional" in this document or not.





Art Form Architecture, LLC

PARKIN - REAR RENDER

817.124.v4 GL

—
Some features shown are optional. Your Purchase & Sale Agreement governs, whether items are labeled "optional" in this document or not.

