



# NORTHLIGHT EXPANDED

## 253.122.v12 GR

In addition to our Terms and Conditions (the "Terms"), please be aware of the following:

Art Form Architecture, LLC ("Artform") requires that our Drawings be built substantially as designed. Artform will not be obligated by or liable for use of this design with markups as part of any builder agreement. While we attempt to accommodate where possible and reasonable, and where the changes do not denigrate our design, any and all changes to Drawings must be approved in writing by Artform. It is recommended that you have your Drawing updated by Artform prior to attaching any Drawing to any builder agreement. Artform shall not be responsible for the misuse of or unauthorized alterations to any of its Drawings.



©2010 Art Form Architecture, LLC  
Northlight Expanded 253.122.v12 GR

Width 42.00 FT

Depth 31.00 FT

Height 28.16 FT

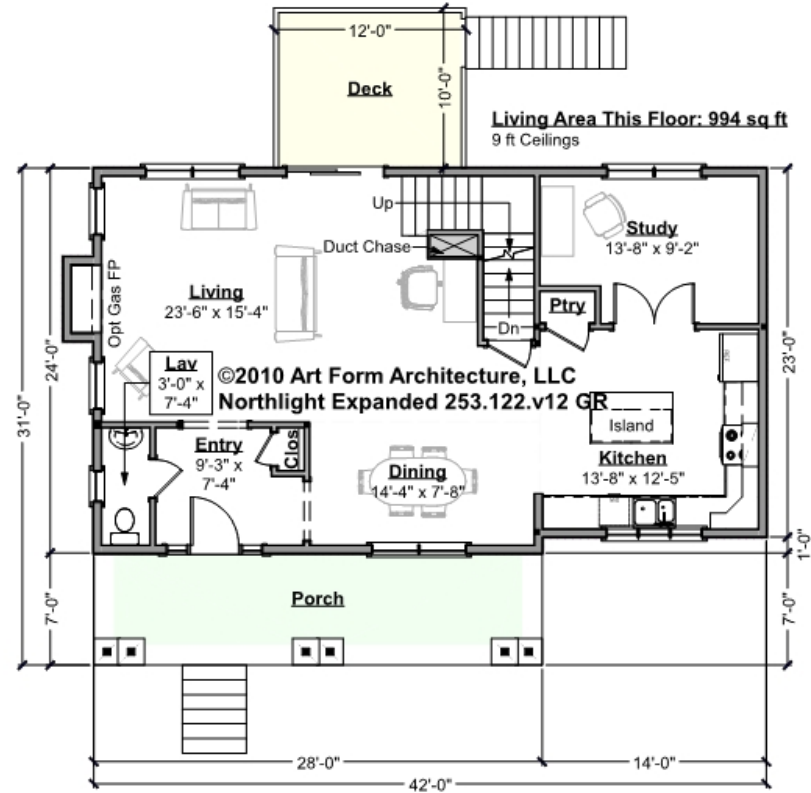
LIVING AREA		BEDROOMS		BATHROOMS	
	2044 FT		3		2
Main	2044 FT	Main	3	Main	2
Future	0 FT	Future	0	Future	0
2 <sup>nd</sup> Unit	0 FT	2 <sup>nd</sup> Unit	0	2 <sup>nd</sup> Unit	0



# NORTHLIGHT EXPANDED - 1<sup>ST</sup> FLOOR

## 253.122.v12 GR

Some features shown are optional. Your Purchase & Sale Agreement governs, whether items are labeled "optional" in this document or not.



CLG HT SHOWN 9'-0"      CLG HT POSSIBLE 8'-0"

\* Major Change Fee, see website plan page for cost

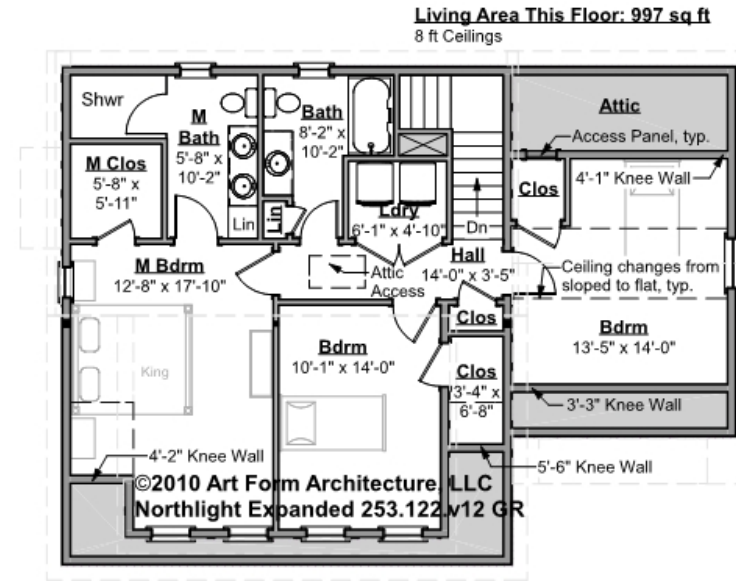
F1 LIVING AREA	994 <sup>FT</sup>	F1 BEDROOMS	0	F1 BATHROOMS	0
Main	994.00 <sup>FT</sup>	Main		Main	
Future	FT	Future		Future	
2 <sup>nd</sup> Unit	FT	2 <sup>nd</sup> Unit		2 <sup>nd</sup> Unit	



# NORTHLIGHT EXPANDED - 2<sup>ND</sup> FLOOR

## 253.122.v12 GR

Some features shown are optional. Your Purchase & Sale Agreement governs, whether items are labeled "optional" in this document or not.



CLG HT SHOWN 8'-0"      CLG HT POSSIBLE 9'-0"

\* Major Change Fee, see website plan page for cost

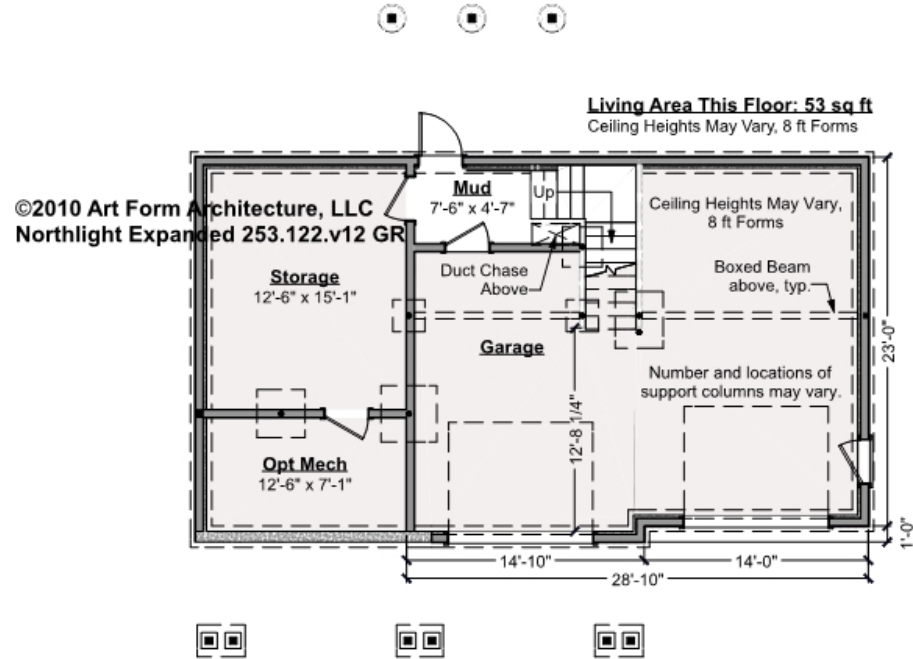
F1 LIVING AREA	997 FT	F1 BEDROOMS	3	F1 BATHROOMS	2
Main	997.00 FT	Main	3.00	Main	2.00
Future	FT	Future		Future	
2 <sup>nd</sup> Unit	FT	2 <sup>nd</sup> Unit		2 <sup>nd</sup> Unit	



# NORTHLIGHT EXPANDED - BASEMENT

## 253.122.v12 GR

Some features shown are optional. Your Purchase & Sale Agreement governs, whether items are labeled "optional" in this document or not.



CLG HT SHOWN 7'-8"      CLG HT POSSIBLE 9'-0"

\* Major Change Fee, see website plan page for cost

F1 LIVING AREA	53 <sup>FT</sup>	F1 BEDROOMS	0	F1 BATHROOMS	0
Main	53.00 <sup>FT</sup>	Main		Main	
Future	FT	Future		Future	
2 <sup>nd</sup> Unit	FT	2 <sup>nd</sup> Unit		2 <sup>nd</sup> Unit	



Art Form Architecture, LLC

## NORTHLIGHT EXPANDED - FRONT ELEVATION

253.122.v12 GR

Some features shown are optional. Your Purchase & Sale Agreement governs, whether items are labeled "optional" in this document or not.



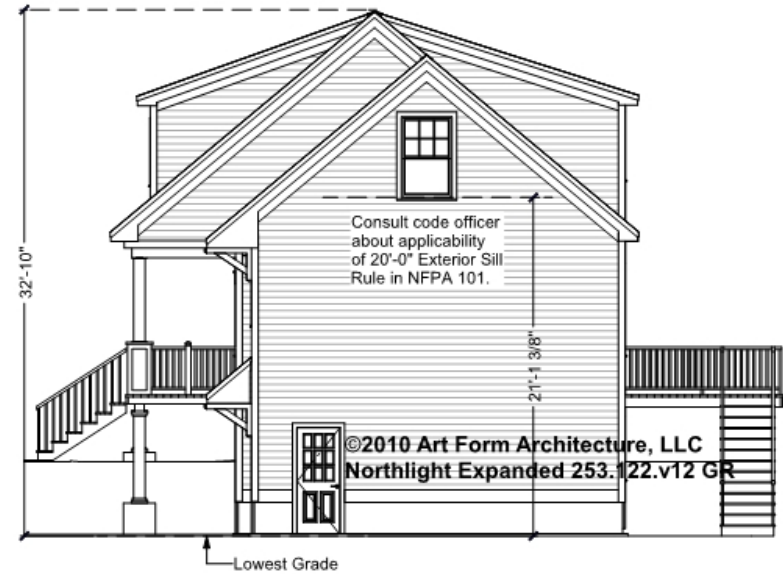


Art Form Architecture, LLC

## NORTHLIGHT EXPANDED - RIGHT ELEVATION

253.122.v12 GR

—  
Some features shown are optional. Your Purchase & Sale Agreement governs, whether items are labeled "optional" in this document or not.





Art Form Architecture, LLC

## NORTHLIGHT EXPANDED - REAR ELEVATION

253.122.v12 GR

—  
Some features shown are optional. Your Purchase & Sale Agreement governs, whether items are labeled "optional" in this document or not.





Art Form Architecture, LLC

## NORTHLIGHT EXPANDED - LEFT ELEVATION

253.122.v12 GR

—  
Some features shown are optional. Your Purchase & Sale Agreement governs, whether items are labeled "optional" in this document or not.







Art Form Architecture, LLC

## **NORTHLIGHT EXPANDED - REAR RENDER**

**253.122.v12 GR**

—  
Some features shown are optional. Your Purchase & Sale Agreement governs, whether items are labeled "optional" in this document or not.

