

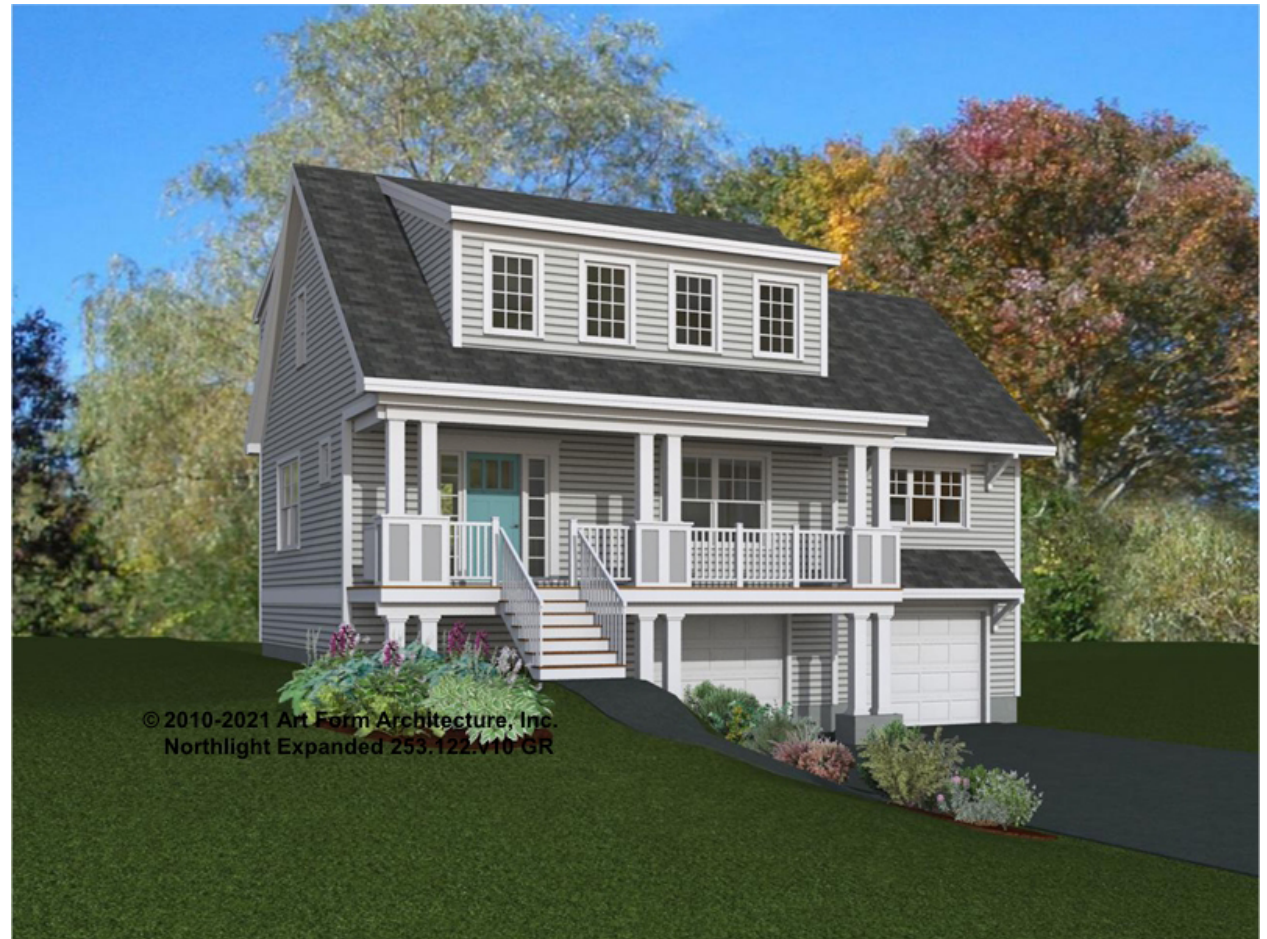


NORTHLIGHT EXPANDED

253.122.v10 GR

In addition to our Terms and Conditions (the "Terms"), please be aware of the following:

Art Form Architecture, LLC ("Artform") requires that our Drawings be built substantially as designed. Artform will not be obligated by or liable for use of this design with markups as part of any builder agreement. While we attempt to accommodate where possible and reasonable, and where the changes do not denigrate our design, any and all changes to Drawings must be approved in writing by Artform. It is recommended that you have your Drawing updated by Artform prior to attaching any Drawing to any builder agreement. Artform shall not be responsible for the misuse of or unauthorized alterations to any of its Drawings.



Width 42.00 FT

Depth 31.00 FT

Height 27.09 FT

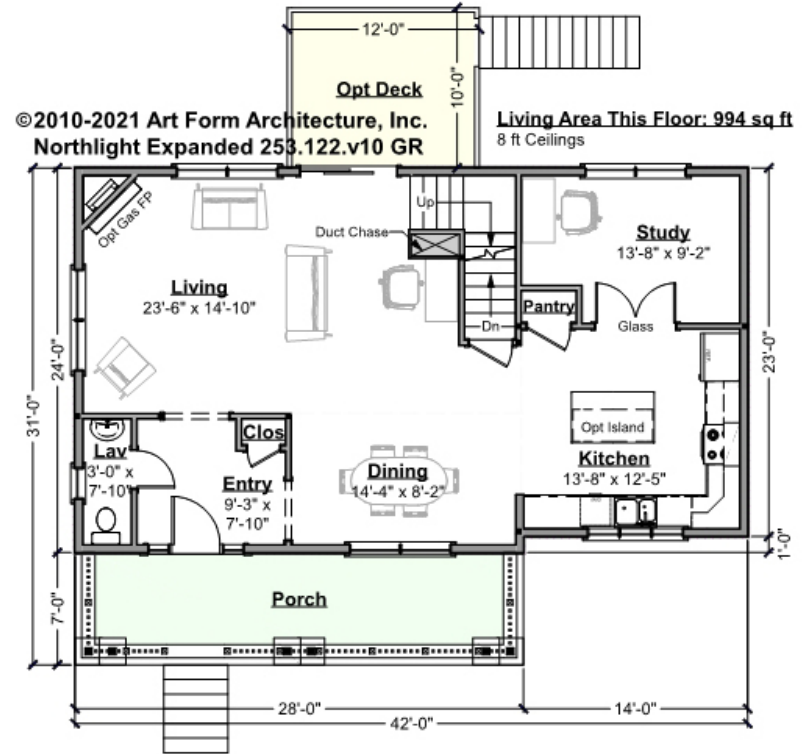
LIVING AREA		BEDROOMS		BATHROOMS	
	1991 FT		4		2.5
Main	1991 FT	Main	3	Main	2.5
Future	0 FT	Future	1	Future	0
2 nd Unit	0 FT	2 nd Unit	0	2 nd Unit	0



NORTHLIGHT EXPANDED - 1ST FLOOR

253.122.v10 GR

Some features shown are optional. Your Purchase & Sale Agreement governs, whether items are labeled "optional" in this document or not.



CLG HT SHOWN 8'-0" CLG HT POSSIBLE 8'-0"

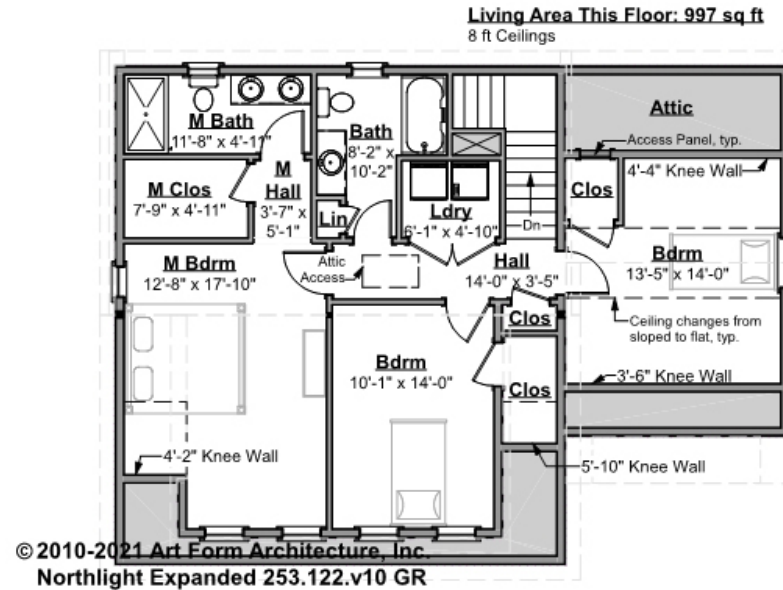
* Major Change Fee, see website plan page for cost

F1 LIVING AREA	994 ^{FT}	F1 BEDROOMS	1	F1 BATHROOMS	0.5
Main	994.00 ^{FT}	Main	0.00	Main	0.50
Future	0.00 ^{FT}	Future	1.00	Future	0.00
2 nd Unit	0.00 ^{FT}	2 nd Unit	0.00	2 nd Unit	0.00



NORTHLIGHT EXPANDED - 2ND FLOOR 253.122.v10 GR

Some features shown are optional. Your Purchase & Sale Agreement governs, whether items are labeled "optional" in this document or not.



CLG HT SHOWN 8'-0"

CLG HT POSSIBLE 8'-0"

* Major Change Fee, see website plan page for cost

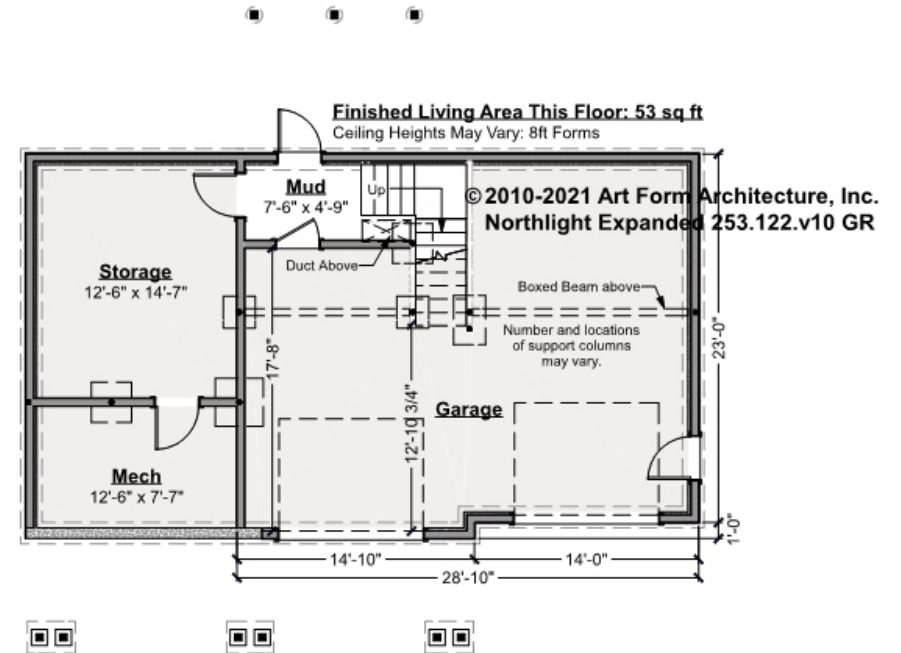
F1 LIVING AREA	997 ^{FT}	F1 BEDROOMS	3	F1 BATHROOMS	2
Main	997.00 ^{FT}	Main	3.00	Main	2.00
Future	0.00 ^{FT}	Future	0.00	Future	0.00
2 nd Unit	0.00 ^{FT}	2 nd Unit	0.00	2 nd Unit	0.00



NORTHLIGHT EXPANDED - BASEMENT 253.122.v10 GR

Note: finished basement area is NOT included in main or future Living Area, but IS shown on CDs. We don't list as Living Area in basements for our database so search doesn't mislead people.

Some features shown are optional. Your Purchase & Sale Agreement governs, whether items are labeled "optional" in this document or not.



CLG HT SHOWN 7'-8" CLG HT POSSIBLE 9'-0"

* Major Change Fee, see website plan page for cost

F1 LIVING AREA		F1 BEDROOMS		F1 BATHROOMS	
	0 ^{FT}		0		0
Main	0.00 ^{FT}	Main	0.00	Main	0.00
Future	0.00 ^{FT}	Future	0.00	Future	0.00
2 nd Unit	0.00 ^{FT}	2 nd Unit	0.00	2 nd Unit	0.00

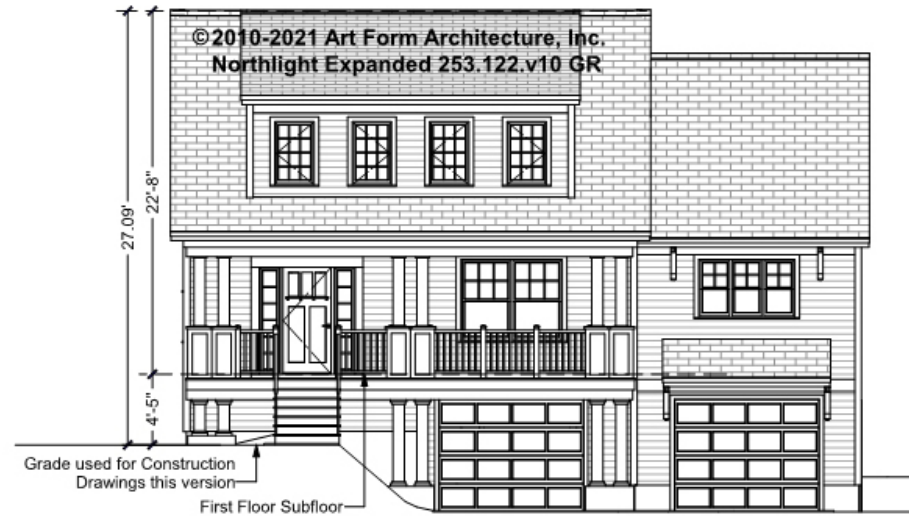


Art Form Architecture, LLC

NORTHLIGHT EXPANDED - FRONT ELEVATION

253.122.v10 GR

Some features shown are optional. Your Purchase & Sale Agreement governs, whether items are labeled "optional" in this document or not.





Art Form Architecture, LLC

NORTHLIGHT EXPANDED - RIGHT ELEVATION

253.122.v10 GR

—
Some features shown are optional. Your Purchase & Sale Agreement governs, whether items are labeled "optional" in this document or not.





Art Form Architecture, LLC

NORTHLIGHT EXPANDED - REAR ELEVATION

253.122.v10 GR

—
Some features shown are optional. Your Purchase & Sale Agreement governs, whether items are labeled "optional" in this document or not.





Art Form Architecture, LLC

NORTHLIGHT EXPANDED - LEFT ELEVATION

253.122.v10 GR

—
Some features shown are optional. Your Purchase & Sale Agreement governs, whether items are labeled "optional" in this document or not.

