



# NORA BETH

## 700.120.v10 GL

In addition to our Terms and Conditions (the "Terms"), please be aware of the following:

Art Form Architecture, LLC ("Artform") requires that our Drawings be built substantially as designed. Artform will not be obligated by or liable for use of this design with markups as part of any builder agreement. While we attempt to accommodate where possible and reasonable, and where the changes do not denigrate our design, any and all changes to Drawings must be approved in writing by Artform. It is recommended that you have your Drawing updated by Artform prior to attaching any Drawing to any builder agreement. Artform shall not be responsible for the misuse of or unauthorized alterations to any of its Drawings.



©2014-2022 Art Form Architecture, Inc.  
Nora Beth 700.120.v10 GL

Width 24.00 FT

Depth 50.66 FT

Height 38.59 FT

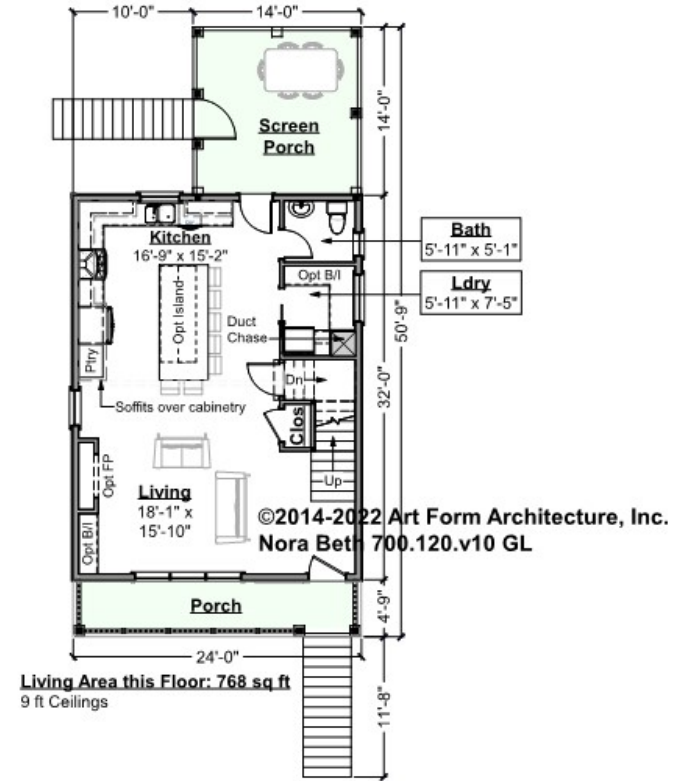
LIVING AREA		BEDROOMS		BATHROOMS	
	1536 FT		2		1.5
Main	1536 FT	Main	2	Main	1.5
Future	0 FT	Future	0	Future	0
2 <sup>nd</sup> Unit	0 FT	2 <sup>nd</sup> Unit	0	2 <sup>nd</sup> Unit	0



# NORA BETH - 1<sup>ST</sup> FLOOR

## 700.120.v10 GL

Some features shown are optional. Your Purchase & Sale Agreement governs, whether items are labeled "optional" in this document or not.



CLG HT SHOWN 9'-0"      CLG HT POSSIBLE 8'-0"

\* Major Change Fee, see website plan page for cost

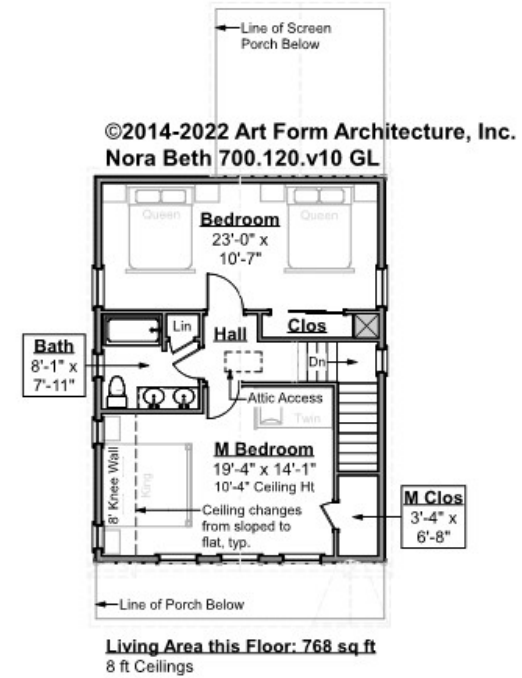
F1 LIVING AREA		F1 BEDROOMS		F1 BATHROOMS	
	768 <sup>FT</sup>		0		0.5
Main	768.00 <sup>FT</sup>	Main		Main	0.50
Future	FT	Future		Future	
2 <sup>nd</sup> Unit	FT	2 <sup>nd</sup> Unit		2 <sup>nd</sup> Unit	



# NORA BETH - 2<sup>ND</sup> FLOOR

## 700.120.v10 GL

Some features shown are optional. Your Purchase & Sale Agreement governs, whether items are labeled "optional" in this document or not.



**CLG HT SHOWN 8'-0"      CLG HT POSSIBLE 9'-0"**

*\* Major Change Fee, see website plan page for cost*

F1 LIVING AREA		F1 BEDROOMS		F1 BATHROOMS	
	768 <sup>FT</sup>		2		1
Main	768.00 <sup>FT</sup>	Main	2.00	Main	1.00
Future	FT	Future		Future	
2 <sup>nd</sup> Unit	FT	2 <sup>nd</sup> Unit		2 <sup>nd</sup> Unit	

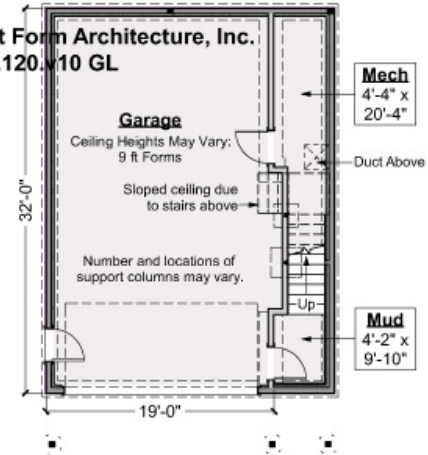


# NORA BETH - BASEMENT

## 700.120.v10 GL

Some features shown are optional. Your Purchase & Sale Agreement governs, whether items are labeled "optional" in this document or not.

©2014-2022 Art Form Architecture, Inc.  
Nora Beth 700.120.v10 GL



CLG HT SHOWN 8'-1" - 8'-11"      CLG HT POSSIBLE 7'-8"

\* Major Change Fee, see website plan page for cost

F1 LIVING AREA		0 <sup>FT</sup>	F1 BEDROOMS		0	F1 BATHROOMS		0
Main	FT		Main			Main		
Future	FT		Future			Future		
2 <sup>nd</sup> Unit	FT		2 <sup>nd</sup> Unit			2 <sup>nd</sup> Unit		



Art Form Architecture, LLC

## NORA BETH - FRONT ELEVATION

### 700.120.v10 GL

Some features shown are optional. Your Purchase & Sale Agreement governs, whether items are labeled "optional" in this document or not.



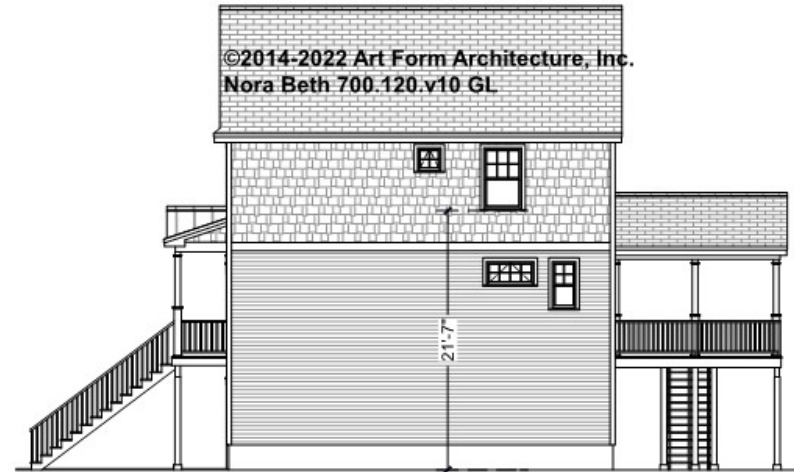


Art Form Architecture, LLC

## NORA BETH - RIGHT ELEVATION

### 700.120.v10 GL

Some features shown are optional. Your Purchase & Sale Agreement governs, whether items are labeled "optional" in this document or not.



Consult Code Officer  
about applicability of 20  
ft sill rule in NFPA 101.



Art Form Architecture, LLC

## NORA BETH - REAR ELEVATION

### 700.120.v10 GL

Some features shown are optional. Your Purchase & Sale Agreement governs, whether items are labeled "optional" in this document or not.

©2014-2022 Art Form Architecture, Inc.  
Nora Beth 700.120.v10 GL





Art Form Architecture, LLC

## NORA BETH - LEFT ELEVATION

700.120.v10 GL

Some features shown are optional. Your Purchase & Sale Agreement governs, whether items are labeled "optional" in this document or not.







Art Form Architecture, LLC

## NORA BETH - REAR RENDER

### 700.120.v10 GL

Some features shown are optional. Your Purchase & Sale Agreement governs, whether items are labeled "optional" in this document or not.

