



# NOAH

## 1018.124.v4 ER

In addition to our Terms and Conditions (the "Terms"), please be aware of the following:

Art Form Architecture, LLC ("Artform") requires that our Drawings be built substantially as designed. Artform will not be obligated by or liable for use of this design with markups as part of any builder agreement. While we attempt to accommodate where possible and reasonable, and where the changes do not denigrate our design, any and all changes to Drawings must be approved in writing by Artform. It is recommended that you have your Drawing updated by Artform prior to attaching any Drawing to any builder agreement. Artform shall not be responsible for the misuse of or unauthorized alterations to any of its Drawings.



Width 24.00 FT

Depth 64.00 FT

Height 32.16 FT

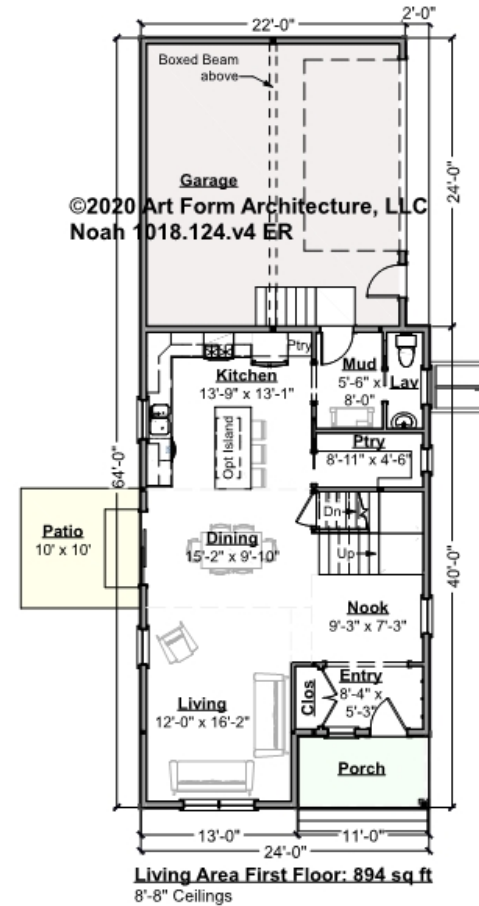
LIVING AREA		BEDROOMS		BATHROOMS	
	2743 FT		4		2.5
Main	2238 FT	Main	4	Main	2.5
Future	505 FT	Future	0	Future	0
2 <sup>nd</sup> Unit	0 FT	2 <sup>nd</sup> Unit	0	2 <sup>nd</sup> Unit	0



# NOAH - 1<sup>ST</sup> FLOOR

## 1018.124.v4 ER

Some features shown are optional. Your Purchase & Sale Agreement governs, whether items are labeled "optional" in this document or not.



CLG HT SHOWN 8'-1" - 8'-11"

CLG HT POSSIBLE 9'-0"

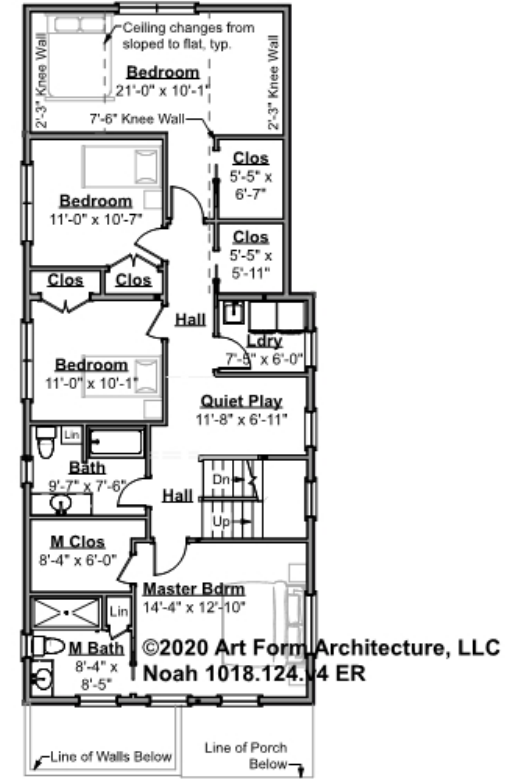
\* Major Change Fee, see website plan page for cost

F1 LIVING AREA	894 <sup>FT</sup>	F1 BEDROOMS	0	F1 BATHROOMS	0.5
Main	894.00 <sup>FT</sup>	Main		Main	0.50
Future	FT	Future		Future	
2 <sup>nd</sup> Unit	FT	2 <sup>nd</sup> Unit		2 <sup>nd</sup> Unit	



**NOAH - 2<sup>ND</sup> FLOOR**  
**1018.124.v4 ER**

Some features shown are optional. Your Purchase & Sale Agreement governs, whether items are labeled "optional" in this document or not.



**Living Area Second Floor: 1344 sq ft**  
 8'-0" Ceilings

**CLG HT SHOWN 8'-0"      CLG HT POSSIBLE 8'-0"**

*\* Major Change Fee, see website plan page for cost*

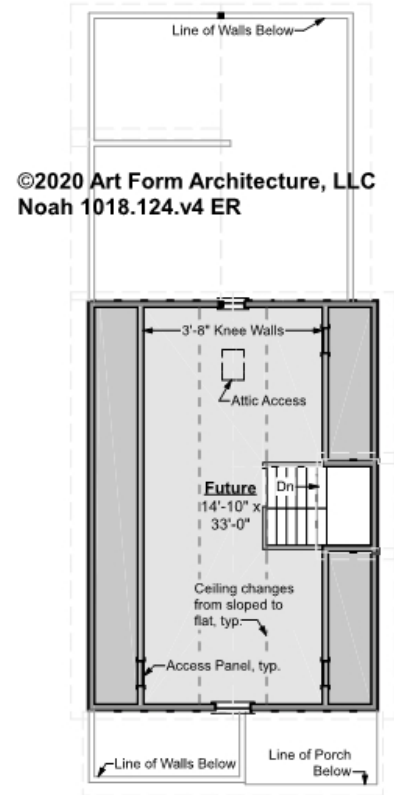
F1 LIVING AREA		F1 BEDROOMS		F1 BATHROOMS	
	1344 <sup>FT</sup>		4		2
Main	1344.00 <sup>FT</sup>	Main	4.00	Main	2.00
Future	FT	Future		Future	
2 <sup>nd</sup> Unit	FT	2 <sup>nd</sup> Unit		2 <sup>nd</sup> Unit	



# NOAH - 3<sup>RD</sup> FLOOR

## 1018.124.v4 ER

Some features shown are optional. Your Purchase & Sale Agreement governs, whether items are labeled "optional" in this document or not.



**Future Living Area Third Floor: 505 sq ft**  
8'-0" Ceilings

**CLG HT SHOWN 8'-0"      CLG HT POSSIBLE 9'-0"**

*\* Major Change Fee, see website plan page for cost*

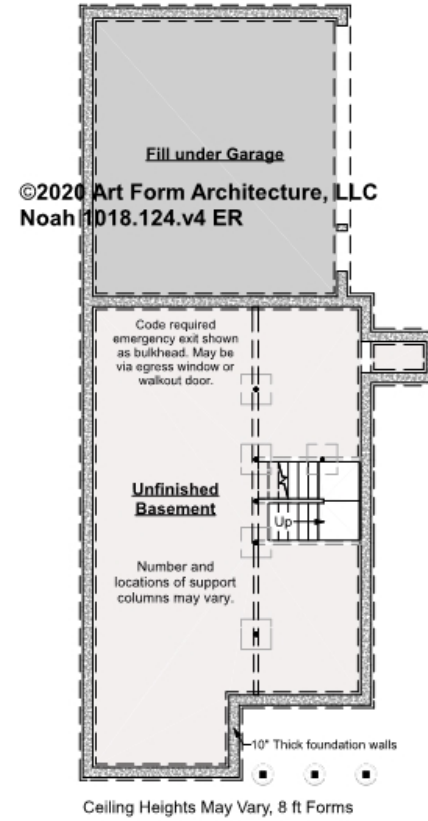
F1 LIVING AREA		F1 BEDROOMS		F1 BATHROOMS	
	505 <sup>FT</sup>		0		0
Main	FT	Main		Main	
Future	505.00 <sup>FT</sup>	Future		Future	
2 <sup>nd</sup> Unit	FT	2 <sup>nd</sup> Unit		2 <sup>nd</sup> Unit	



# NOAH - BASEMENT

## 1018.124.v4 ER

Some features shown are optional. Your Purchase & Sale Agreement governs, whether items are labeled "optional" in this document or not.



**CLG HT SHOWN 7'-8"      CLG HT POSSIBLE 8'-1" - 8'-11"**

*\* Major Change Fee, see website plan page for cost*

F1 LIVING AREA		0 <sup>FT</sup>	F1 BEDROOMS		0	F1 BATHROOMS		0
Main		FT	Main			Main		
Future		FT	Future			Future		
2 <sup>nd</sup> Unit		FT	2 <sup>nd</sup> Unit			2 <sup>nd</sup> Unit		



Art Form Architecture, LLC

## NOAH - FRONT/RIGHT ELEVATION 1018.124.v4 ER

Some features shown are optional. Your Purchase & Sale Agreement governs, whether items are labeled "optional" in this document or not.



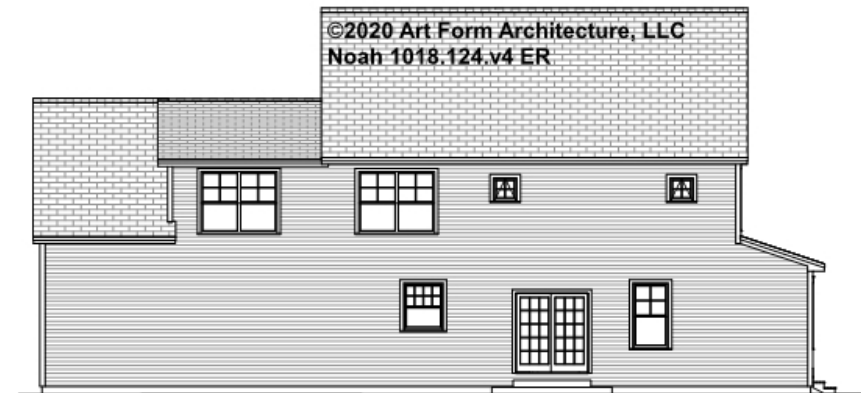


Art Form Architecture, LLC

## NOAH - REAR/LEFT ELEVATION

1018.124.v4 ER

Some features shown are optional. Your Purchase & Sale Agreement governs, whether items are labeled "optional" in this document or not.





Art Form Architecture, LLC

## NOAH - REAR RENDER

1018.124.v4 ER

Some features shown are optional. Your Purchase & Sale Agreement governs, whether items are labeled "optional" in this document or not.

