



# NOAH

## 1018.124 ER

Construction Drawings currently available for this plan are for a Slab on Grade.

In addition to our Terms and Conditions (the "Terms"), please be aware of the following:

Art Form Architecture, LLC ("Artform") requires that our Drawings be built substantially as designed. Artform will not be obligated by or liable for use of this design with markups as part of any builder agreement. While we attempt to accommodate where possible and reasonable, and where the changes do not denigrate our design, any and all changes to Drawings must be approved in writing by Artform. It is recommended that you have your Drawing updated by Artform prior to attaching any Drawing to any builder agreement. Artform shall not be responsible for the misuse of or unauthorized alterations to any of its Drawings.



Width 24.00 FT

Depth 64.00 FT

Height 31.42 FT

LIVING AREA		BEDROOMS		BATHROOMS	
	2745 FT		5		2.5
Main	2238 FT	Main	4	Main	2.5
Future	507 FT	Future	1	Future	0
2 <sup>nd</sup> Unit	0 FT	2 <sup>nd</sup> Unit	0	2 <sup>nd</sup> Unit	0

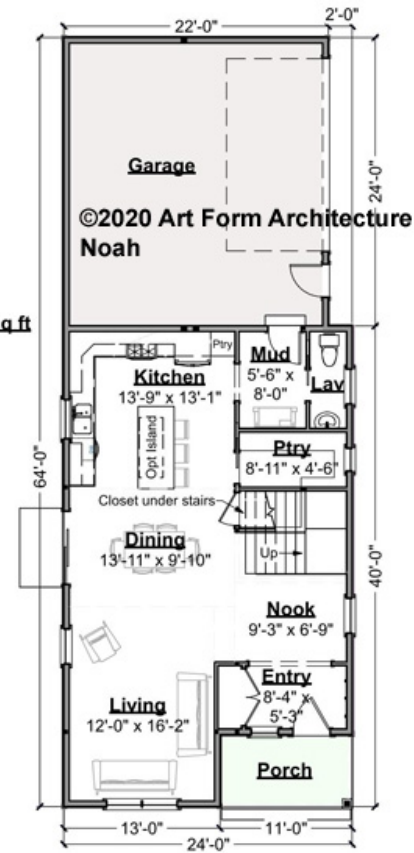


# NOAH - 1<sup>ST</sup> FLOOR

## 1018.124 ER

Some features shown are optional. Your Purchase & Sale Agreement governs, whether items are labeled "optional" in this document or not.

**Living Area First Floor: 894 sq ft**  
8'-8" Ceilings



CRS 1018,124 ER Noah

CLG HT SHOWN 8'-1" - 8'-11"

CLG HT POSSIBLE 8'-0"

\* Major Change Fee, see website plan page for cost

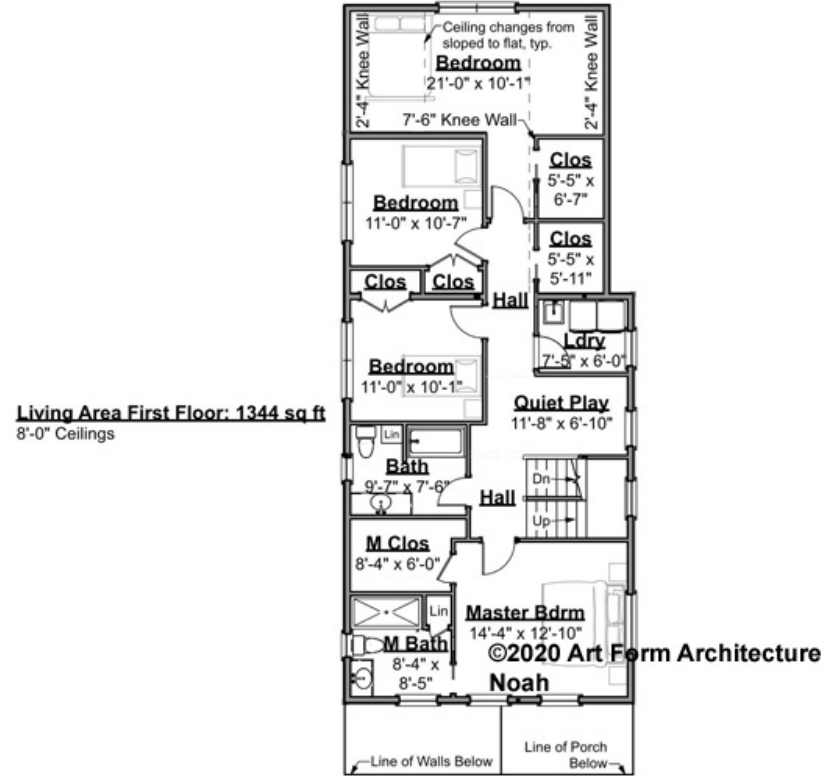
F1 LIVING AREA	894 <sup>FT</sup>	F1 BEDROOMS	0	F1 BATHROOMS	0.5
Main	894.00 <sup>FT</sup>	Main	0.00	Main	0.50
Future	0.00 <sup>FT</sup>	Future	0.00	Future	0.00
2 <sup>nd</sup> Unit	0.00 <sup>FT</sup>	2 <sup>nd</sup> Unit	0.00	2 <sup>nd</sup> Unit	0.00



# NOAH - 2<sup>ND</sup> FLOOR

## 1018.124 ER

Some features shown are optional. Your Purchase & Sale Agreement governs, whether items are labeled "optional" in this document or not.



CRS 1018,124 ER Noah

**CLG HT SHOWN 8'-0"      CLG HT POSSIBLE 9'-0"**

*\* Major Change Fee, see website plan page for cost*

F1 LIVING AREA		F1 BEDROOMS		F1 BATHROOMS	
	1344 <sup>FT</sup>		4		2
Main	1344.00 <sup>FT</sup>	Main	4.00	Main	2.00
Future	0.00 <sup>FT</sup>	Future	0.00	Future	0.00
2 <sup>nd</sup> Unit	0.00 <sup>FT</sup>	2 <sup>nd</sup> Unit	0.00	2 <sup>nd</sup> Unit	0.00



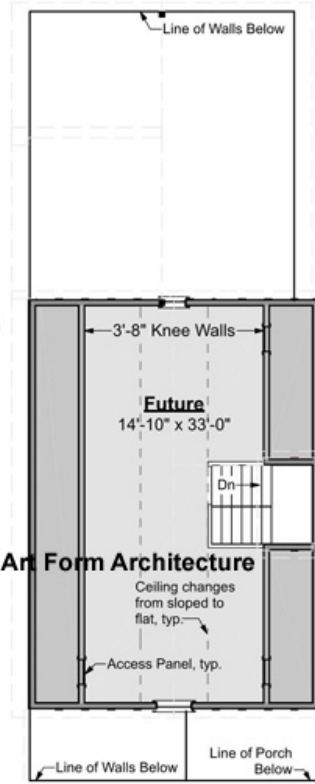
# NOAH - 3<sup>RD</sup> FLOOR

## 1018.124 ER

Some features shown are optional. Your Purchase & Sale Agreement governs, whether items are labeled "optional" in this document or not.

**Future Living Area First Floor: 507 sq ft**  
8'-0" Ceilings

©2020 Art Form Architecture  
Noah



CRS 1018,124 ER Noah

**CLG HT SHOWN 8'-0"      CLG HT POSSIBLE 9'-0"**

*\* Major Change Fee, see website plan page for cost*

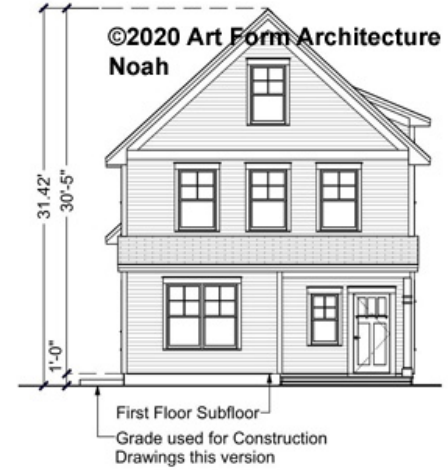
F1 LIVING AREA		F1 BEDROOMS		F1 BATHROOMS	
	507 <sup>FT</sup>		1		0
Main	0.00 <sup>FT</sup>	Main	0.00	Main	0.00
Future	507.00 <sup>FT</sup>	Future	1.00	Future	
2 <sup>nd</sup> Unit	0.00 <sup>FT</sup>	2 <sup>nd</sup> Unit	0.00	2 <sup>nd</sup> Unit	0.00



## NOAH - FRONT ELEVATION

### 1018.124 ER

Some features shown are optional. Your Purchase & Sale Agreement governs, whether items are labeled "optional" in this document or not.



CRS 1018.124 ER Noah



Art Form Architecture, LLC

## NOAH - RIGHT ELEVATION

### 1018.124 ER

Some features shown are optional. Your Purchase & Sale Agreement governs, whether items are labeled "optional" in this document or not.



CRS 1018.124 ER Noah



Art Form Architecture, LLC

## NOAH - REAR ELEVATION

### 1018.124 ER

Some features shown are optional. Your Purchase & Sale Agreement governs, whether items are labeled "optional" in this document or not.



CRS 1018.124 ER Noah



## NOAH - LEFT ELEVATION

1018.124 ER

Some features shown are optional. Your Purchase & Sale Agreement governs, whether items are labeled "optional" in this document or not.



CRS 1018.124 ER Noah