



NIALL
883.144

In addition to our Terms and Conditions (the "Terms"), please be aware of the following:

Art Form Architecture, LLC ("Artform") requires that our Drawings be built substantially as designed. Artform will not be obligated by or liable for use of this design with markups as part of any builder agreement. While we attempt to accommodate where possible and reasonable, and where the changes do not denigrate our design, any and all changes to Drawings must be approved in writing by Artform. It is recommended that you have your Drawing updated by Artform prior to attaching any Drawing to any builder agreement. Artform shall not be responsible for the misuse of or unauthorized alterations to any of its Drawings.



Width 93.00 FT

Depth 76.50 FT

Height 29.42 FT

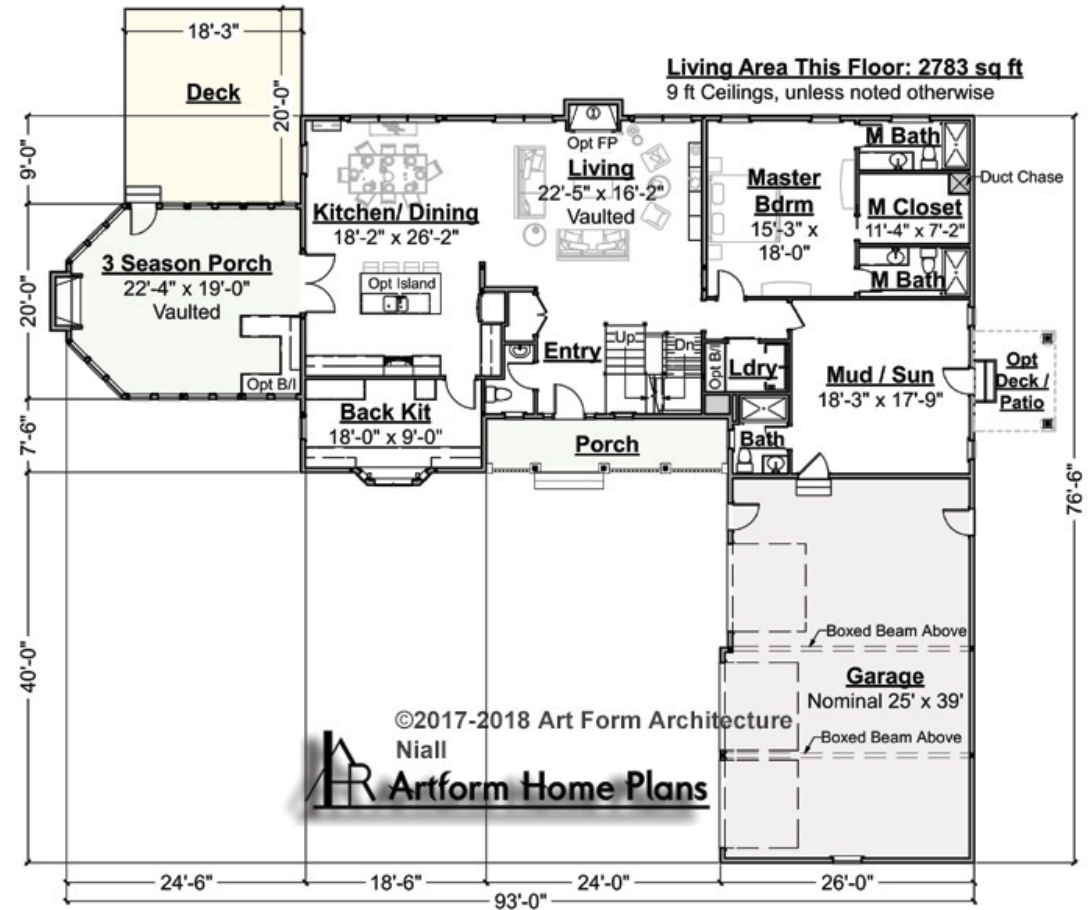
LIVING AREA		BEDROOMS		BATHROOMS	
	4663 FT		5		4
Main	3988 FT	Main	4	Main	4
Future	675 FT	Future	1	Future	0
2 nd Unit	0 FT	2 nd Unit	0	2 nd Unit	0



NIALL - 1ST FLOOR

883.144

Some features shown are optional. Your Purchase & Sale Agreement governs, whether items are labeled "optional" in this document or not.



CLG HT SHOWN 9'-0" CLG HT POSSIBLE 8'-0"

* Major Change Fee, see website plan page for cost

F1 LIVING AREA		F1 BEDROOMS		F1 BATHROOMS	
	2783 ^{FT}		1		3
Main	2783.00 ^{FT}	Main	1.00	Main	3.00
Future	0.00 ^{FT}	Future	0.00	Future	0.00
2 nd Unit	0.00 ^{FT}	2 nd Unit	0.00	2 nd Unit	0.00

NIALL - 1ST FLOOR
883.144

—
Some features shown are optional. Your Purchase & Sale Agreement governs, whether items are labeled "optional" in this document or not.



Living Room & Stairs - Additional Image



Art Form Architecture, LLC

NIALL - 1ST FLOOR

883.144

Some features shown are optional. Your Purchase & Sale Agreement governs, whether items are labeled "optional" in this document or not.



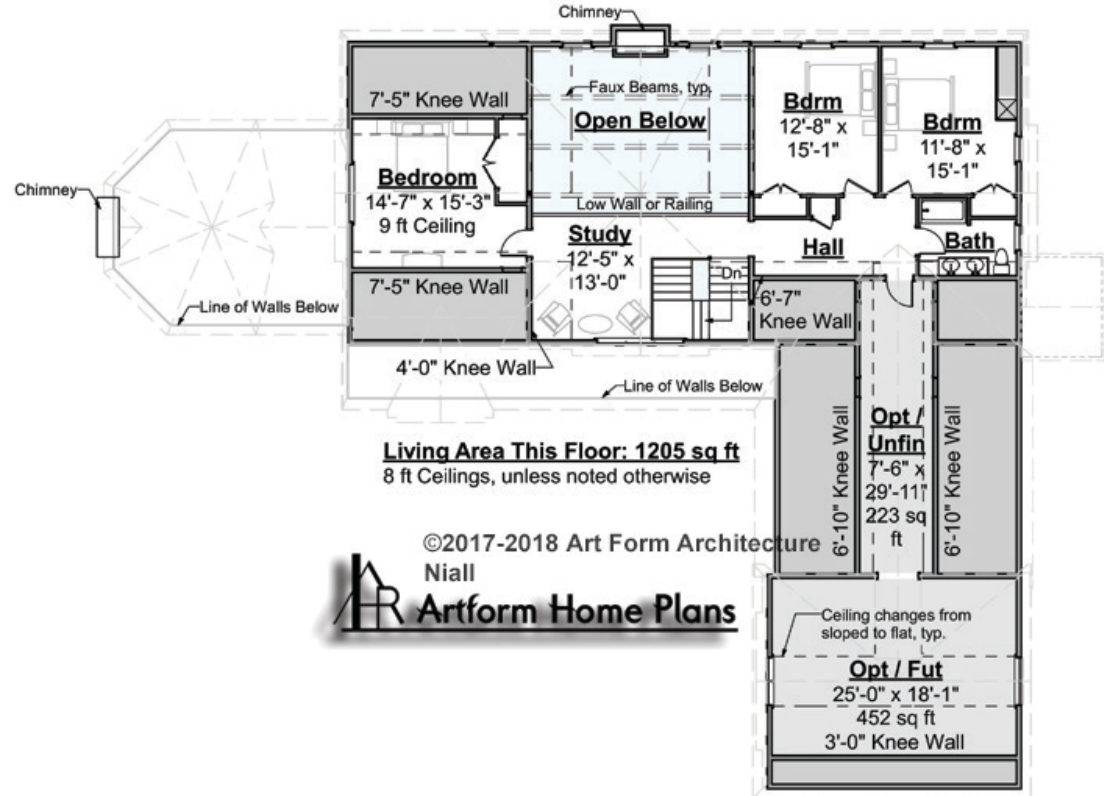
Living Room - Additional Image



NIALL - 2ND FLOOR

883.144

Some features shown are optional. Your Purchase & Sale Agreement governs, whether items are labeled "optional" in this document or not.



CLG HT SHOWN 8'-0" CLG HT POSSIBLE 8'-0"

* Major Change Fee, see website plan page for cost

F1 LIVING AREA	1880 FT	F1 BEDROOMS	4	F1 BATHROOMS	1
Main	1205.00 FT	Main	3.00	Main	1.00
Future	675.00 FT	Future	1.00	Future	0.00
2 nd Unit	0.00 FT	2 nd Unit	0.00	2 nd Unit	0.00

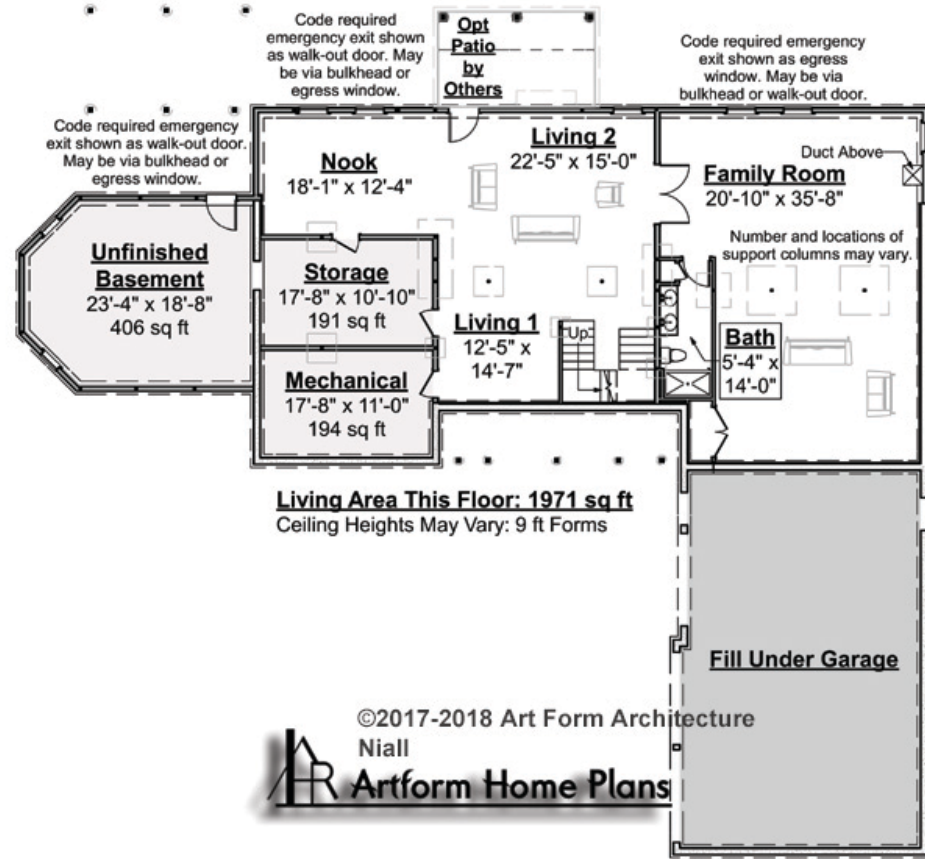


NIALL - BASEMENT

883.144

Note: finished basement area is NOT included in main or future Living Area, but IS shown on CDs. We do this so Search doesn't mislead - everyone knows you can finish a basement!

Some features shown are optional. Your Purchase & Sale Agreement governs, whether items are labeled "optional" in this document or not.



CLG HT SHOWN 7'-8" CLG HT POSSIBLE 9'-0"

* Major Change Fee, see website plan page for cost

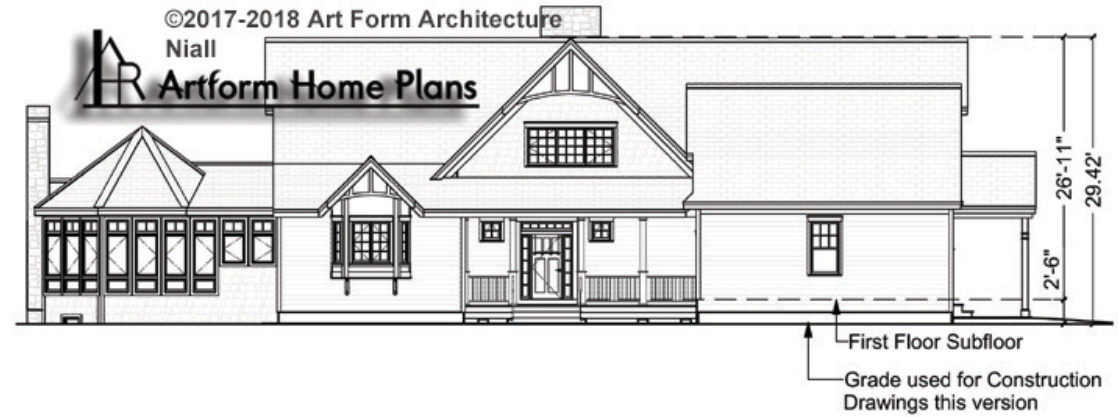
F1 LIVING AREA		F1 BEDROOMS		F1 BATHROOMS	
0	FT	0		0	
Main	0.00	Main	0.00	Main	0.00
Future	0.00	Future	0.00	Future	0.00
2 nd Unit	0.00	2 nd Unit	0.00	2 nd Unit	0.00



NIALL - FRONT ELEVATION

883.144

Some features shown are optional. Your Purchase & Sale Agreement governs, whether items are labeled "optional" in this document or not.



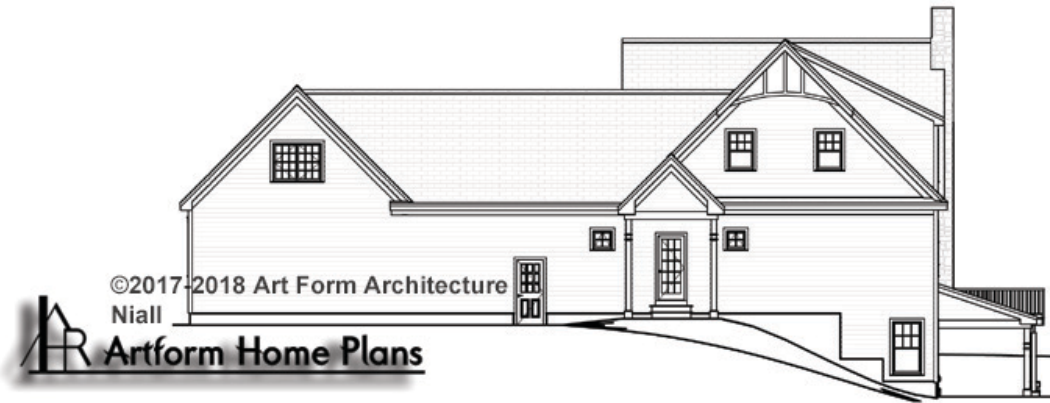


Art Form Architecture, LLC

NIALL - RIGHT ELEVATION

883.144

Some features shown are optional. Your Purchase & Sale Agreement governs, whether items are labeled "optional" in this document or not.

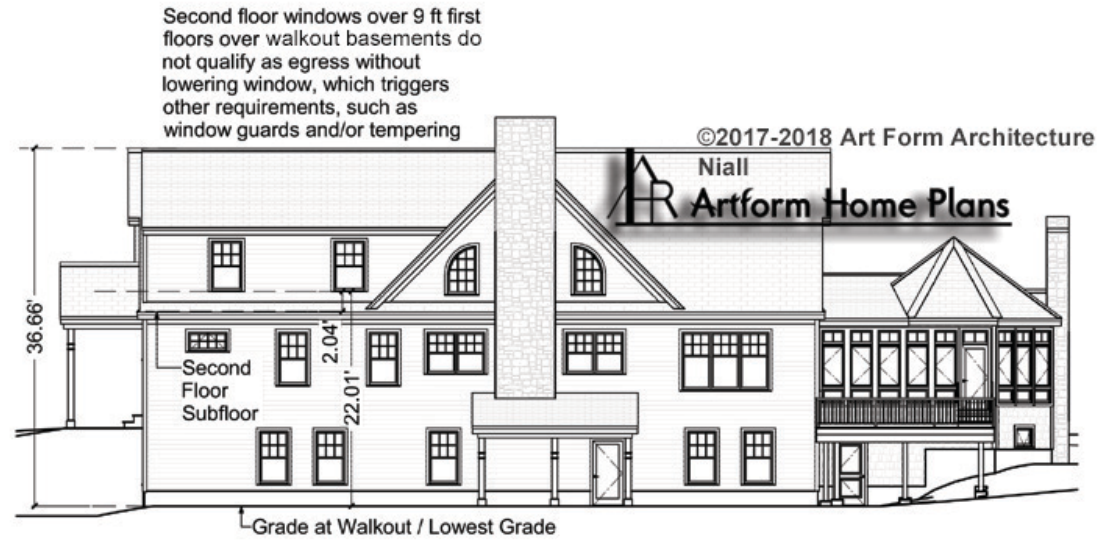




NIALL - REAR ELEVATION

883.144

Some features shown are optional. Your Purchase & Sale Agreement governs, whether items are labeled "optional" in this document or not.





Art Form Architecture, LLC

NIALL - LEFT ELEVATION

883.144

Some features shown are optional. Your Purchase & Sale Agreement governs, whether items are labeled "optional" in this document or not.

