



# NIALL

## 883.124.v3 GR

In addition to our Terms and Conditions (the "Terms"), please be aware of the following:

Art Form Architecture, LLC ("Artform") requires that our Drawings be built substantially as designed. Artform will not be obligated by or liable for use of this design with markups as part of any builder agreement. While we attempt to accommodate where possible and reasonable, and where the changes do not denigrate our design, any and all changes to Drawings must be approved in writing by Artform. It is recommended that you have your Drawing updated by Artform prior to attaching any Drawing to any builder agreement. Artform shall not be responsible for the misuse of or unauthorized alterations to any of its Drawings.



©2017 Art Form Architecture, LLC  
Niall 883.124.v3 GR

Width 87.00 FT

Depth 61.00 FT

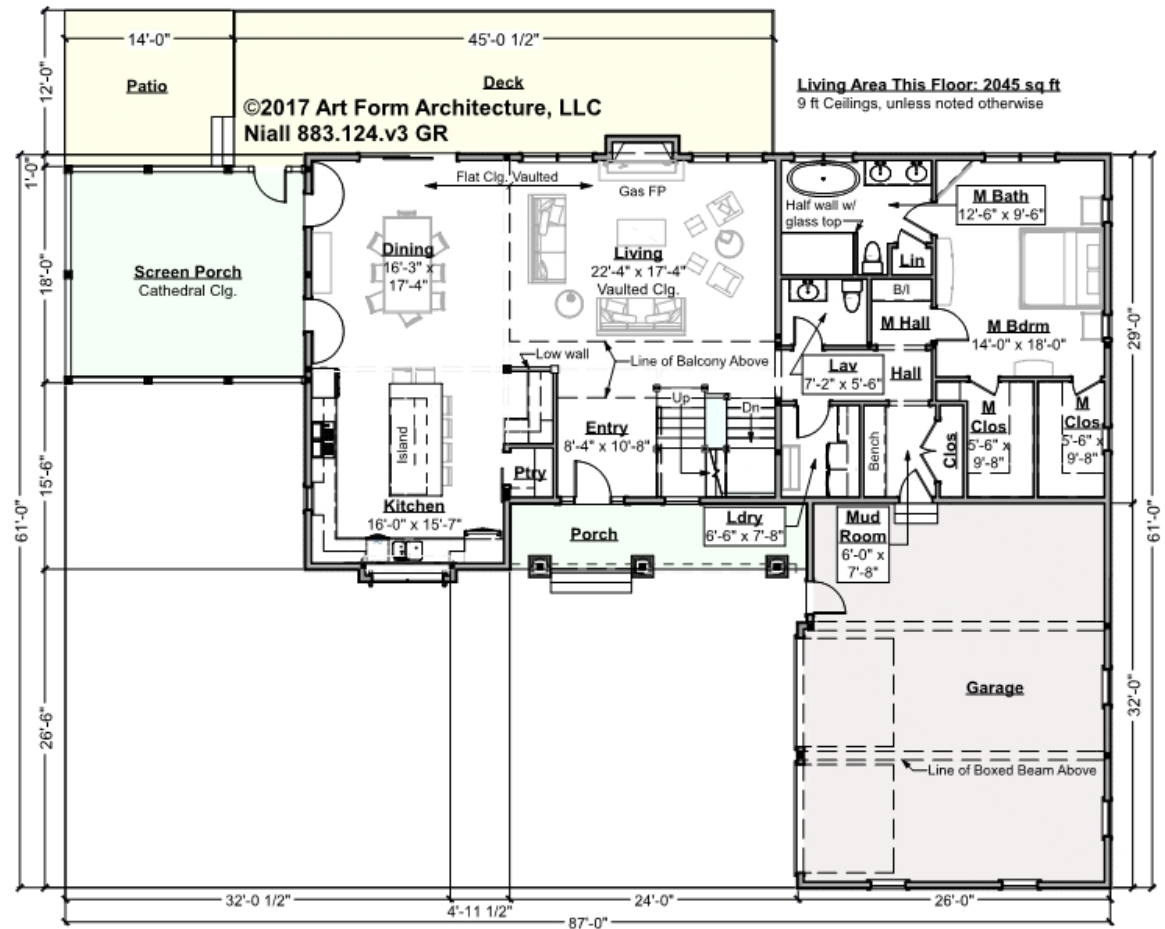
Height 28.66 FT

LIVING AREA		BEDROOMS		BATHROOMS	
	4843 FT		5		3.5
Main	3399 FT	Main	4	Main	3.5
Future	1444 FT	Future	1	Future	0
2 <sup>nd</sup> Unit	0 FT	2 <sup>nd</sup> Unit	0	2 <sup>nd</sup> Unit	0



**NIALL - 1<sup>ST</sup> FLOOR**  
**883.124.v3 GR**

Some features shown are optional. Your Purchase & Sale Agreement governs, whether items are labeled "optional" in this document or not.



**CLG HT SHOWN 9'-0"**      **CLG HT POSSIBLE 8'-0"**

*\* Major Change Fee, see website plan page for cost*

F1 LIVING AREA	2045 FT	F1 BEDROOMS	1	F1 BATHROOMS	1.5
Main	2045.00 FT	Main	1.00	Main	1.50
Future	FT	Future		Future	
2 <sup>nd</sup> Unit	FT	2 <sup>nd</sup> Unit		2 <sup>nd</sup> Unit	



Art Form Architecture, LLC

## NIALL - 1<sup>ST</sup> FLOOR

883.124.v3 GR

Some features shown are optional. Your Purchase & Sale Agreement governs, whether items are labeled "optional" in this document or not.



Dining Room - Additional Image





Art Form Architecture, LLC

## NIALL - 1<sup>ST</sup> FLOOR

883.124.v3 GR

Some features shown are optional. Your Purchase & Sale Agreement governs, whether items are labeled "optional" in this document or not.



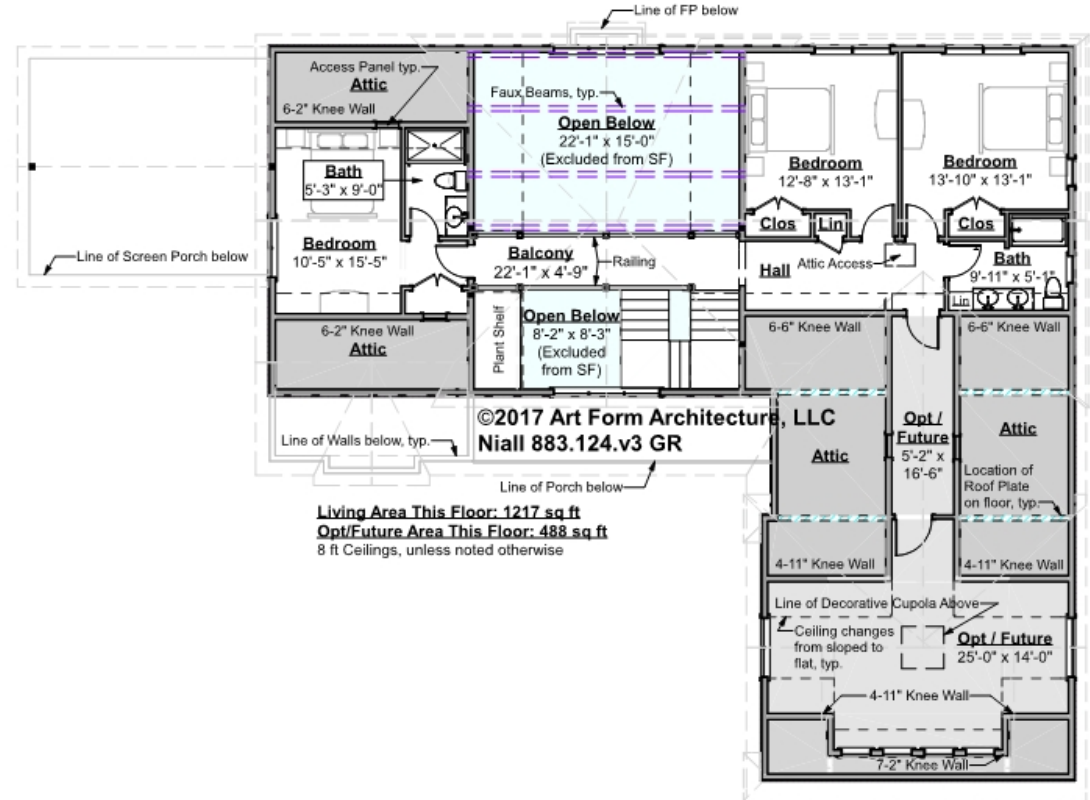
Living Room - Additional Image



# NIALL - 2<sup>ND</sup> FLOOR

883.124.v3 GR

Some features shown are optional. Your Purchase & Sale Agreement governs, whether items are labeled "optional" in this document or not.



CLG HT SHOWN 8'-0"      CLG HT POSSIBLE 9'-0"

\* Major Change Fee, see website plan page for cost

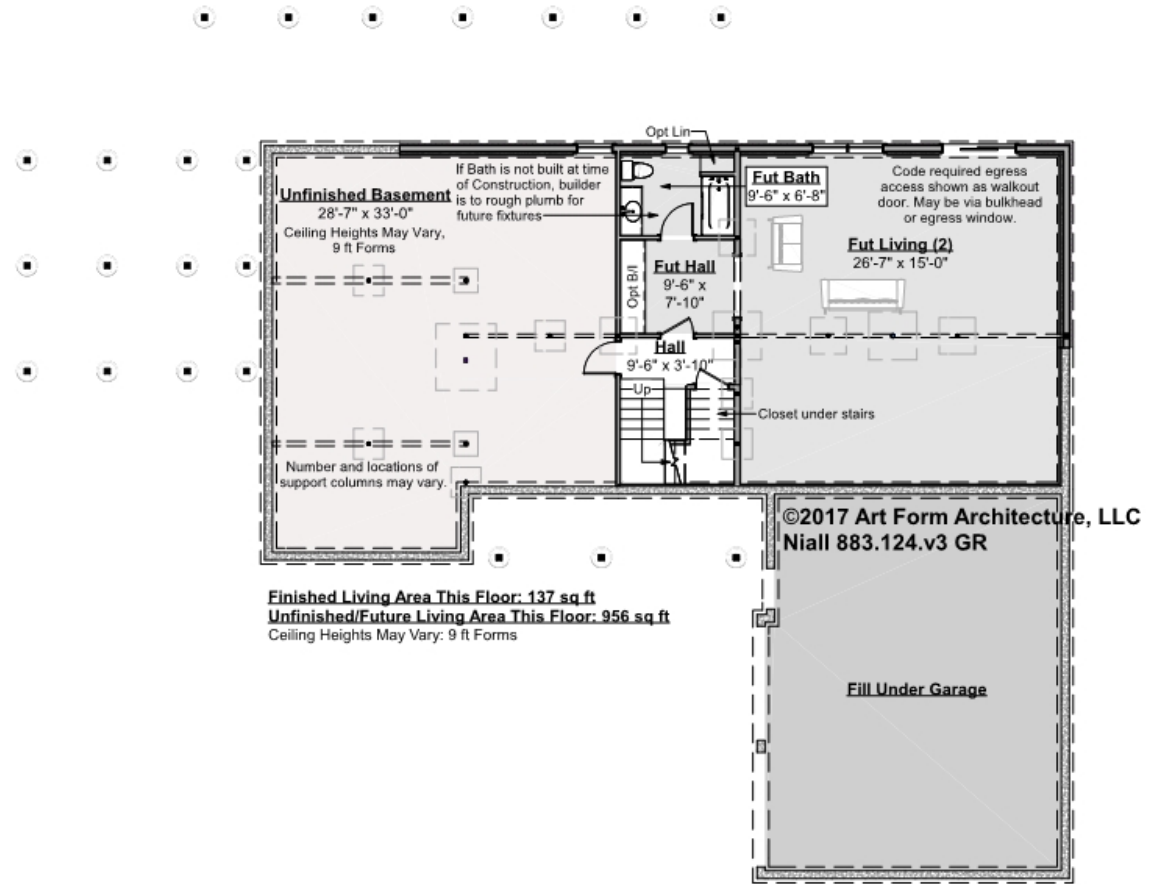
F1 LIVING AREA	1705 FT	F1 BEDROOMS	4	F1 BATHROOMS	2
Main	1217.00 FT	Main	3.00	Main	2.00
Future	488.00 FT	Future	1.00	Future	
2 <sup>nd</sup> Unit	FT	2 <sup>nd</sup> Unit		2 <sup>nd</sup> Unit	



# NIALL - BASEMENT

## 883.124.v3 GR

Some features shown are optional. Your Purchase & Sale Agreement governs, whether items are labeled "optional" in this document or not.



CLG HT SHOWN 8'-1" - 8'-11"

CLG HT POSSIBLE 7'-8"

\* Major Change Fee, see website plan page for cost

F1 LIVING AREA		F1 BEDROOMS		F1 BATHROOMS	
	1093 <sup>FT</sup>		0		0
Main	137.00 <sup>FT</sup>	Main		Main	
Future	956.00 <sup>FT</sup>	Future		Future	
2 <sup>nd</sup> Unit	FT	2 <sup>nd</sup> Unit		2 <sup>nd</sup> Unit	



Art Form Architecture, LLC

## NIALL - FRONT/RIGHT ELEVATION

883.124.v3 GR

Some features shown are optional. Your Purchase & Sale Agreement governs, whether items are labeled "optional" in this document or not.





Art Form Architecture, LLC

## NIALL - REAR/LEFT ELEVATION

883.124.v3 GR

Some features shown are optional. Your Purchase & Sale Agreement governs, whether items are labeled "optional" in this document or not.







Art Form Architecture, LLC

## NIALL - REAR RENDER

883.124.v3 GR

Some features shown are optional. Your Purchase & Sale Agreement governs, whether items are labeled "optional" in this document or not.

