



## NEW ENGLANDER

028.124.v8 GL

In addition to our Terms and Conditions (the "Terms"), please be aware of the following:

Art Form Architecture, LLC ("Artform") requires that our Drawings be built substantially as designed. Artform will not be obligated by or liable for use of this design with markups as part of any builder agreement. While we attempt to accommodate where possible and reasonable, and where the changes do not denigrate our design, any and all changes to Drawings must be approved in writing by Artform. It is recommended that you have your Drawing updated by Artform prior to attaching any Drawing to any builder agreement. Artform shall not be responsible for the misuse of or unauthorized alterations to any of its Drawings.



Width 39.00 FT

Depth 62.00 FT

Height 27.66 FT

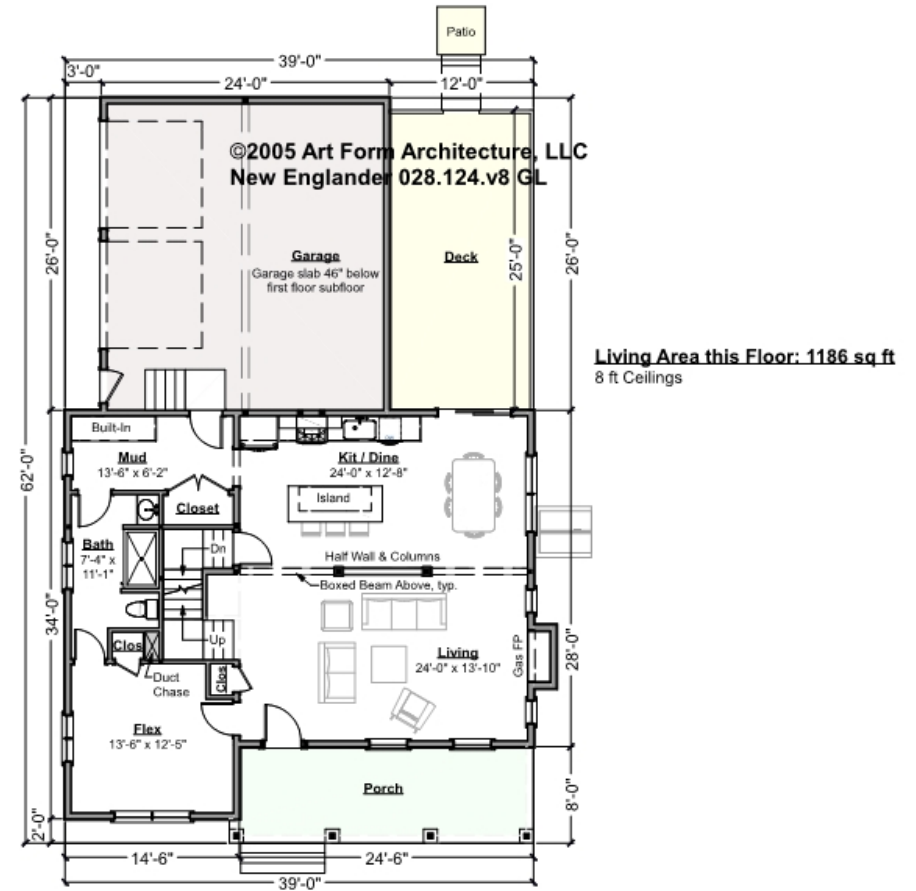
LIVING AREA		BEDROOMS		BATHROOMS	
	2396 FT		4		3
Main	2396 FT	Main	3	Main	3
Future	0 FT	Future	1	Future	0
2 <sup>nd</sup> Unit	0 FT	2 <sup>nd</sup> Unit	0	2 <sup>nd</sup> Unit	0



# NEW ENGLANDER - 1<sup>ST</sup> FLOOR

028.124.v8 GL

Some features shown are optional. Your Purchase & Sale Agreement governs, whether items are labeled "optional" in this document or not.



CLG HT SHOWN 8'-0"      CLG HT POSSIBLE 9'-0"

\* Major Change Fee, see website plan page for cost

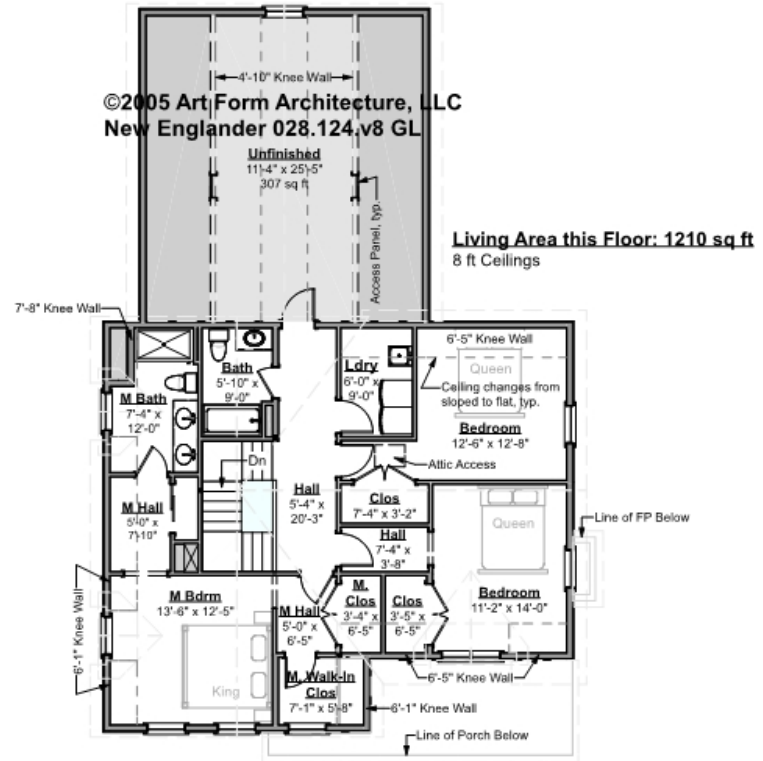
F1 LIVING AREA	1186 FT	F1 BEDROOMS	1	F1 BATHROOMS	1
Main	1186.00 FT	Main		Main	1.00
Future	FT	Future	1.00	Future	
2 <sup>nd</sup> Unit	FT	2 <sup>nd</sup> Unit		2 <sup>nd</sup> Unit	



# NEW ENGLANDER - 2<sup>ND</sup> FLOOR

028.124.v8 GL

Some features shown are optional. Your Purchase & Sale Agreement governs, whether items are labeled "optional" in this document or not.



CLG HT SHOWN 8'-0"      CLG HT POSSIBLE 9'-0"

\* Major Change Fee, see website plan page for cost

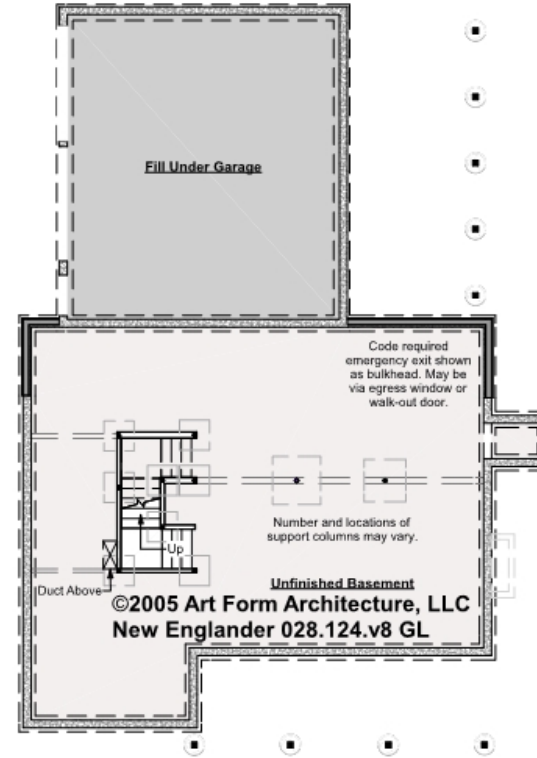
F1 LIVING AREA	1210 FT <sup>2</sup>	F1 BEDROOMS	3	F1 BATHROOMS	2
Main	1210.00 FT <sup>2</sup>	Main	3.00	Main	2.00
Future	FT	Future		Future	
2 <sup>nd</sup> Unit	FT	2 <sup>nd</sup> Unit		2 <sup>nd</sup> Unit	



# NEW ENGLANDER - BASEMENT

028.124.v8 GL

Some features shown are optional. Your Purchase & Sale Agreement governs, whether items are labeled "optional" in this document or not.



**CLG HT SHOWN 7'-8"      CLG HT POSSIBLE 10' & Up**

*\* Major Change Fee, see website plan page for cost*

F1 LIVING AREA		0 FT		F1 BEDROOMS		0		F1 BATHROOMS		0	
Main	FT			Main				Main			
Future	FT			Future				Future			
2 <sup>nd</sup> Unit	FT			2 <sup>nd</sup> Unit				2 <sup>nd</sup> Unit			



Art Form Architecture, LLC

## NEW ENGLANDER - FRONT ELEVATION

028.124.v8 GL

Some features shown are optional. Your Purchase & Sale Agreement governs, whether items are labeled "optional" in this document or not.





Art Form Architecture, LLC

## NEW ENGLANDER - RIGHT ELEVATION

028.124.v8 GL

—  
Some features shown are optional. Your Purchase & Sale Agreement governs, whether items are labeled "optional" in this document or not.





Art Form Architecture, LLC

## NEW ENGLANDER - REAR ELEVATION

### 028.124.v8 GL

Some features shown are optional. Your Purchase & Sale Agreement governs, whether items are labeled "optional" in this document or not.





Art Form Architecture, LLC

## NEW ENGLANDER - LEFT ELEVATION

### 028.124.v8 GL

Some features shown are optional. Your Purchase & Sale Agreement governs, whether items are labeled "optional" in this document or not.







Art Form Architecture, LLC

## NEW ENGLANDER - REAR RENDER

028.124.v8 GL

Some features shown are optional. Your Purchase & Sale Agreement governs, whether items are labeled "optional" in this document or not.

