



# NEVILLE DUPLEX

946.220.v2

In addition to our Terms and Conditions (the "Terms"), please be aware of the following:

Art Form Architecture, LLC ("Artform") requires that our Drawings be built substantially as designed. Artform will not be obligated by or liable for use of this design with markups as part of any builder agreement. While we attempt to accommodate where possible and reasonable, and where the changes do not denigrate our design, any and all changes to Drawings must be approved in writing by Artform. It is recommended that you have your Drawing updated by Artform prior to attaching any Drawing to any builder agreement. Artform shall not be responsible for the misuse of or unauthorized alterations to any of its Drawings.



©2018-2022 Art Form Architecture, Inc.  
Neville Duplex 946.220.v2

Width 52.00 FT

Depth 34.00 FT

Height 40.33 FT

LIVING AREA		BEDROOMS		BATHROOMS	
	3688 FT		6		5
Main	1844 FT	Main	3	Main	2.5
Future	0 FT	Future	0	Future	0
2 <sup>nd</sup> Unit	1844 FT	2 <sup>nd</sup> Unit	3	2 <sup>nd</sup> Unit	2.5

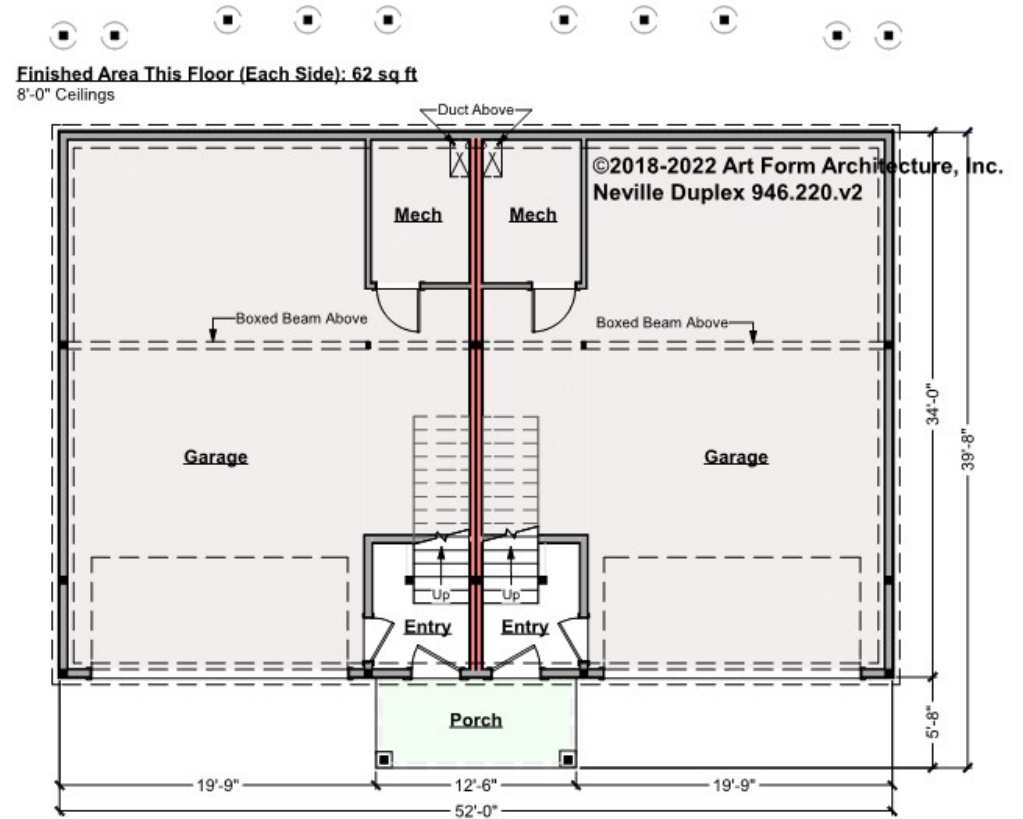


# NEVILLE DUPLEX - 1<sup>ST</sup> FLOOR

946.220.v2

Note: Newest build of this Neville Duplex version is designed with 10" thick foundation walls.

Some features shown are optional. Your Purchase & Sale Agreement governs, whether items are labeled "optional" in this document or not.



CLG HT SHOWN 8'-0"    CLG HT POSSIBLE 8'-0"

\* Major Change Fee, see website plan page for cost

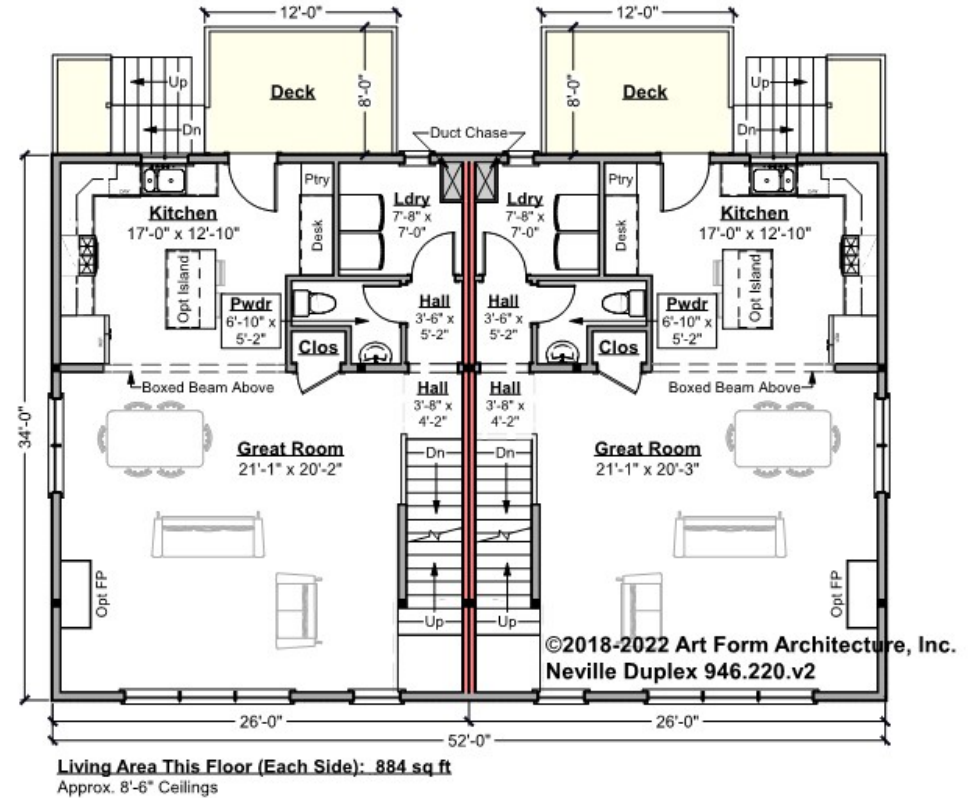
F1 LIVING AREA		F1 BEDROOMS		F1 BATHROOMS	
	124 <sup>FT</sup>		0		0
Main	62.00 <sup>FT</sup>	Main	0.00	Main	0.00
Future	0.00 <sup>FT</sup>	Future	0.00	Future	0.00
2 <sup>nd</sup> Unit	62.00 <sup>FT</sup>	2 <sup>nd</sup> Unit	0.00	2 <sup>nd</sup> Unit	0.00



# NEVILLE DUPLEX - 2<sup>ND</sup> FLOOR

## 946.220.v2

Some features shown are optional. Your Purchase & Sale Agreement governs, whether items are labeled "optional" in this document or not.



CLG HT SHOWN 8'-1" - 8'-11"

CLG HT POSSIBLE 9'-0"

\* Major Change Fee, see website plan page for cost

F1 LIVING AREA	1768 FT	F1 BEDROOMS	0	F1 BATHROOMS	1
Main	884.00 FT	Main	0.00	Main	0.50
Future	0.00 FT	Future	0.00	Future	0.00
2 <sup>nd</sup> Unit	884.00 FT	2 <sup>nd</sup> Unit	0.00	2 <sup>nd</sup> Unit	0.50

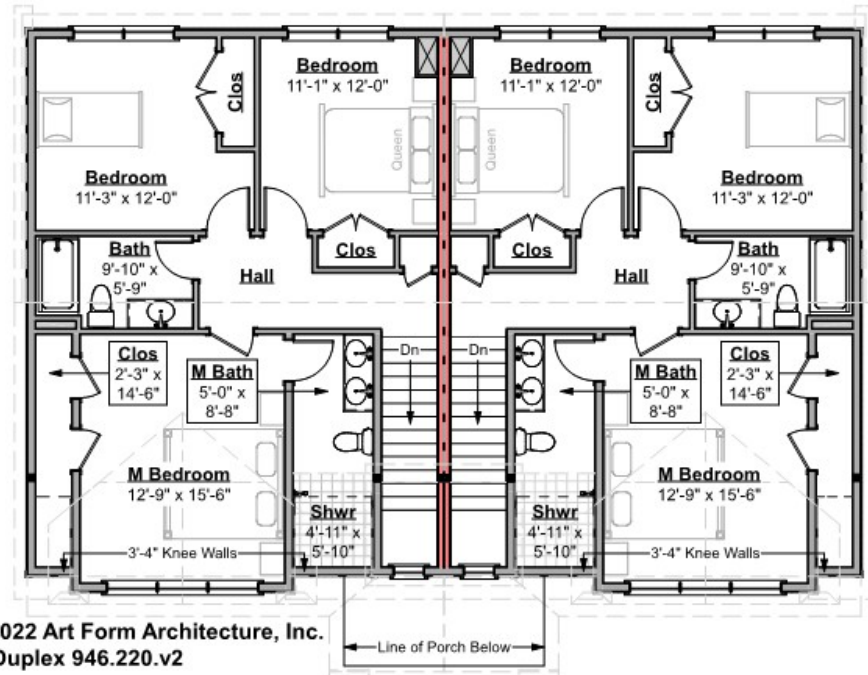


# NEVILLE DUPLEX - 3<sup>RD</sup> FLOOR

946.220.v2

Some features shown are optional. Your Purchase & Sale Agreement governs, whether items are labeled "optional" in this document or not.

Living Area This Floor (Each Side): 898 sq ft  
8'-0" Ceilings



©2018-2022 Art Form Architecture, Inc.  
Neville Duplex 946.220.v2

CLG HT SHOWN 8'-0"

CLG HT POSSIBLE 8'-0"

\* Major Change Fee, see website plan page for cost

F1 LIVING AREA	1796 FT	F1 BEDROOMS	6	F1 BATHROOMS	4
Main	898.00 FT	Main	3.00	Main	2.00
Future	FT	Future		Future	
2 <sup>nd</sup> Unit	898.00 FT	2 <sup>nd</sup> Unit	3.00	2 <sup>nd</sup> Unit	2.00





Art Form Architecture, LLC

## NEVILLE DUPLEX - FRONT ELEVATION

### 946.220.v2

Some features shown are optional. Your Purchase & Sale Agreement governs, whether items are labeled "optional" in this document or not.





Art Form Architecture, LLC

## NEVILLE DUPLEX - RIGHT ELEVATION

### 946.220.v2

Some features shown are optional. Your Purchase & Sale Agreement governs, whether items are labeled "optional" in this document or not.



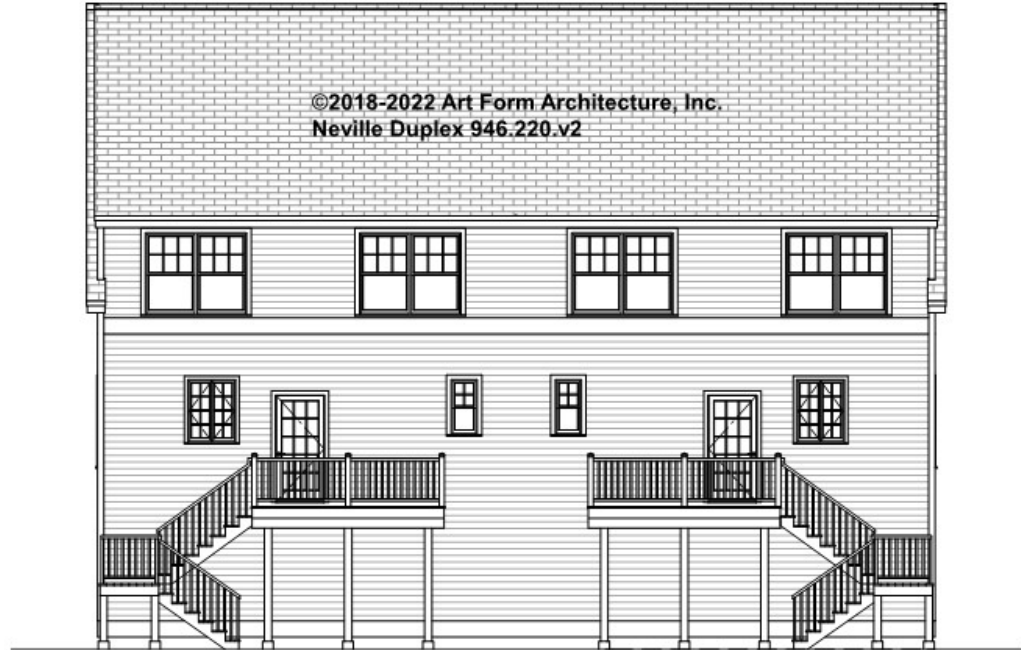


Art Form Architecture, LLC

## NEVILLE DUPLEX - REAR ELEVATION

946.220.v2

Some features shown are optional. Your Purchase & Sale Agreement governs, whether items are labeled "optional" in this document or not.





Art Form Architecture, LLC

## NEVILLE DUPLEX - LEFT ELEVATION

946.220.v2

Some features shown are optional. Your Purchase & Sale Agreement governs, whether items are labeled "optional" in this document or not.







Art Form Architecture, LLC

## NEVILLE DUPLEX - REAR RENDER

946.220.v2

Some features shown are optional. Your Purchase & Sale Agreement governs, whether items are labeled "optional" in this document or not.

