



NASH

721.124.v2 KL

In addition to our Terms and Conditions (the "Terms"), please be aware of the following:

Art Form Architecture, LLC ("Artform") requires that our Drawings be built substantially as designed. Artform will not be obligated by or liable for use of this design with markups as part of any builder agreement. While we attempt to accommodate where possible and reasonable, and where the changes do not denigrate our design, any and all changes to Drawings must be approved in writing by Artform. It is recommended that you have your Drawing updated by Artform prior to attaching any Drawing to any builder agreement. Artform shall not be responsible for the misuse of or unauthorized alterations to any of its Drawings.



©2015-2017 Art Form Architecture
Nash
Artform Home Plans

Width 52.00 FT

Depth 36.00 FT

Height 22.08 FT

LIVING AREA		BEDROOMS		BATHROOMS	
	2342 FT		3		2.5
Main	2342 FT	Main	3	Main	2.5
Future	0 FT	Future	0	Future	0
2 nd Unit	0 FT	2 nd Unit	0	2 nd Unit	0



NASH - 1ST FLOOR

721.124.v2 KL

Note that this design really cannot have 9 ft first floor ceiling without a major design change. Going from 8 ft to 9 ft ceilings requires two more stair treads. There isn't room at the top or bottom of these stairs for that.

Some features shown are optional. Your Purchase & Sale Agreement governs, whether items are labeled "optional" in this document or not.



CLG HT SHOWN 8'-0" CLG HT POSSIBLE 8'-0"

* Major Change Fee, see website plan page for cost

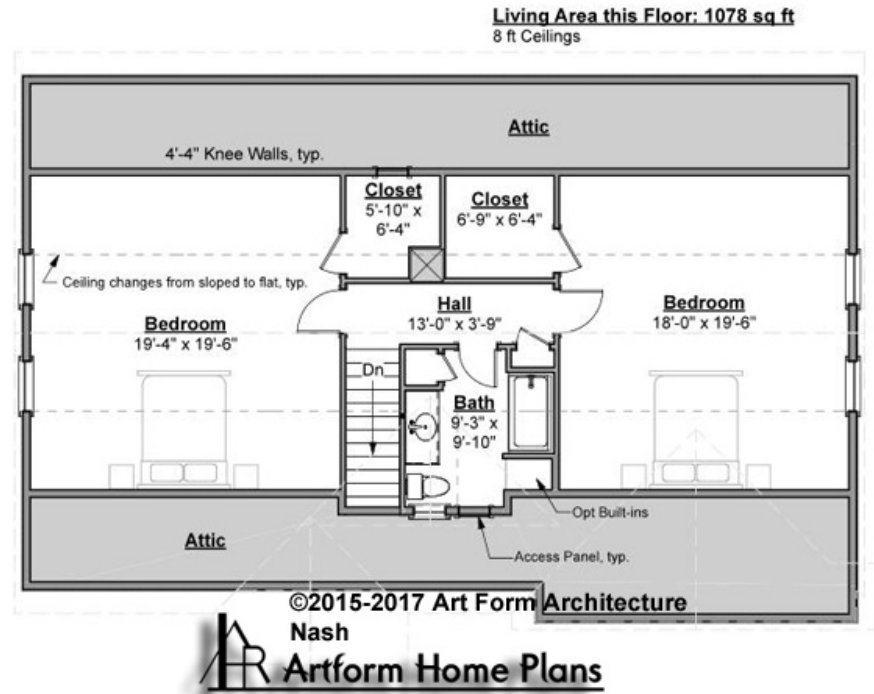
F1 LIVING AREA	1264 ^{FT}	F1 BEDROOMS	1	F1 BATHROOMS	1.5
Main	1264.00 ^{FT}	Main	1.00	Main	1.50
Future	0.00 ^{FT}	Future	0.00	Future	0.00
2 nd Unit	0.00 ^{FT}	2 nd Unit	0.00	2 nd Unit	0.00



NASH - 2ND FLOOR

721.124.v2 KL

Some features shown are optional. Your Purchase & Sale Agreement governs, whether items are labeled "optional" in this document or not.



CLG HT SHOWN 8'-0" CLG HT POSSIBLE 8'-0"

* Major Change Fee, see website plan page for cost

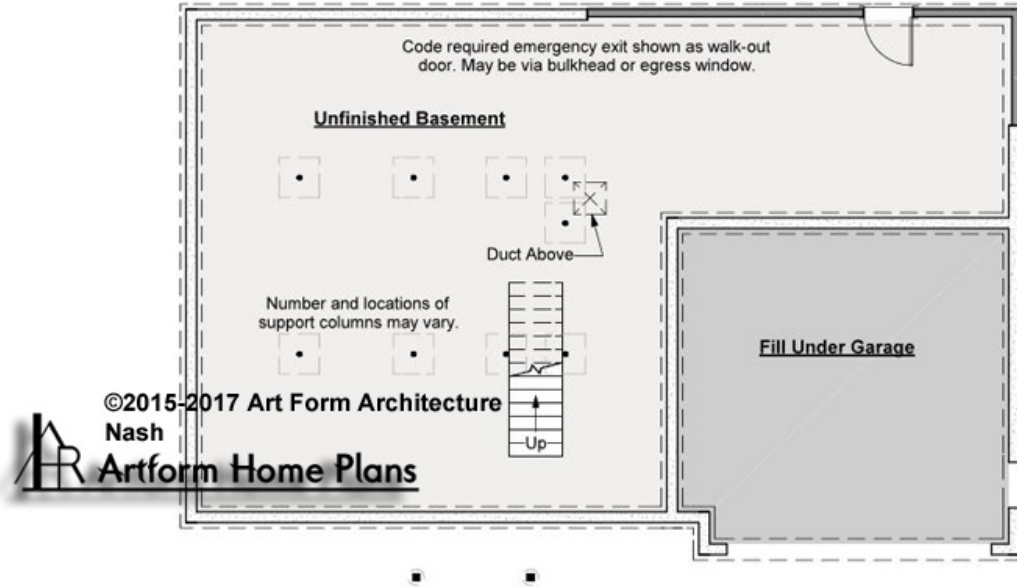
F1 LIVING AREA	1078 ^{FT}	F1 BEDROOMS	2	F1 BATHROOMS	1
Main	1078.00 ^{FT}	Main	2.00	Main	1.00
Future	0.00 ^{FT}	Future	0.00	Future	0.00
2 nd Unit	0.00 ^{FT}	2 nd Unit	0.00	2 nd Unit	0.00



NASH - BASEMENT

721.124.v2 KL

Some features shown are optional. Your Purchase & Sale Agreement governs, whether items are labeled "optional" in this document or not.



CLG HT SHOWN 7'-8" CLG HT POSSIBLE 9'-0"

* Major Change Fee, see website plan page for cost

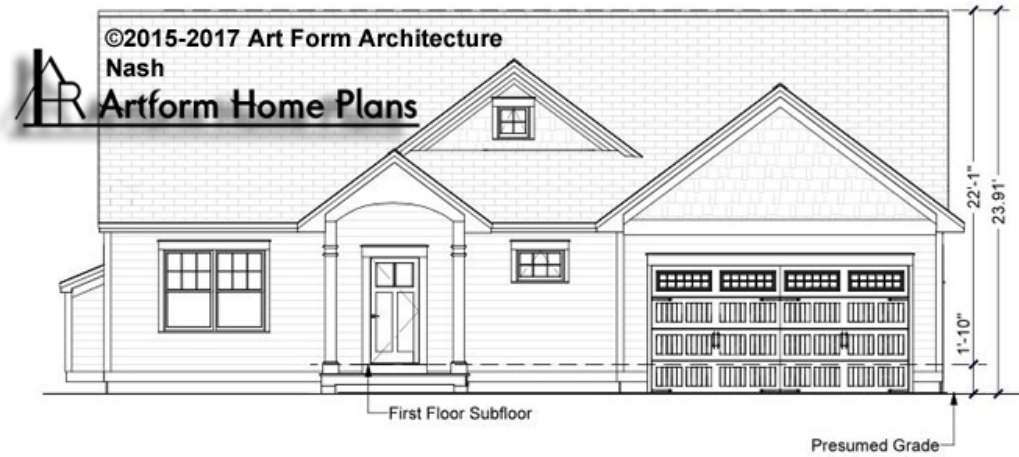
F1 LIVING AREA		F1 BEDROOMS		F1 BATHROOMS	
	0 FT		0		0
Main	0.00 FT	Main	0.00	Main	0.00
Future	0.00 FT	Future	0.00	Future	0.00
2 nd Unit	0.00 FT	2 nd Unit	0.00	2 nd Unit	0.00



NASH - FRONT ELEVATION

721.124.v2 KL

Some features shown are optional. Your Purchase & Sale Agreement governs, whether items are labeled "optional" in this document or not.





Art Form Architecture, LLC

NASH - RIGHT ELEVATION

721.124.v2 KL

Some features shown are optional. Your Purchase & Sale Agreement governs, whether items are labeled "optional" in this document or not.





NASH - REAR ELEVATION

721.124.v2 KL

Some features shown are optional. Your Purchase & Sale Agreement governs, whether items are labeled "optional" in this document or not.





Art Form Architecture, LLC

NASH - LEFT ELEVATION

721.124.v2 KL

Some features shown are optional. Your Purchase & Sale Agreement governs, whether items are labeled "optional" in this document or not.

