



MONROE

1116.124 GR

In addition to our Terms and Conditions (the "Terms"), please be aware of the following:

Art Form Architecture, LLC ("Artform") requires that our Drawings be built substantially as designed. Artform will not be obligated by or liable for use of this design with markups as part of any builder agreement. While we attempt to accommodate where possible and reasonable, and where the changes do not denigrate our design, any and all changes to Drawings must be approved in writing by Artform. It is recommended that you have your Drawing updated by Artform prior to attaching any Drawing to any builder agreement. Artform shall not be responsible for the misuse of or unauthorized alterations to any of its Drawings.



Width 52.50 FT

Depth 52.00 FT

Height 35.50 FT

LIVING AREA		BEDROOMS		BATHROOMS	
	2233 FT		4		2.5
Main	2233 FT	Main	3	Main	2.5
Future	0 FT	Future	1	Future	0
2 nd Unit	0 FT	2 nd Unit	0	2 nd Unit	0

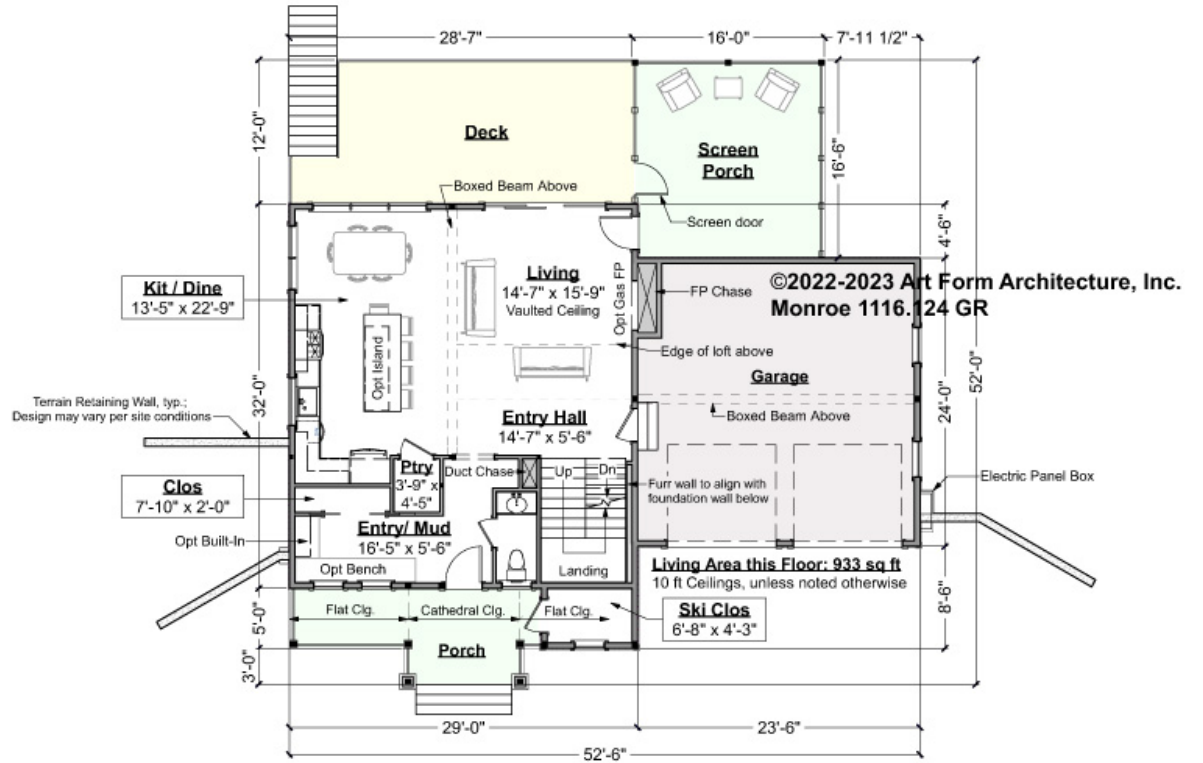


MONROE - 1ST FLOOR

1116.124 GR

NOTE: Ceiling Height is 10 feet - refer to floor plan

Some features shown are optional. Your Purchase & Sale Agreement governs, whether items are labeled "optional" in this document or not.



CLG HT SHOWN 9'-0" CLG HT POSSIBLE 8'-0"

* Major Change Fee, see website plan page for cost

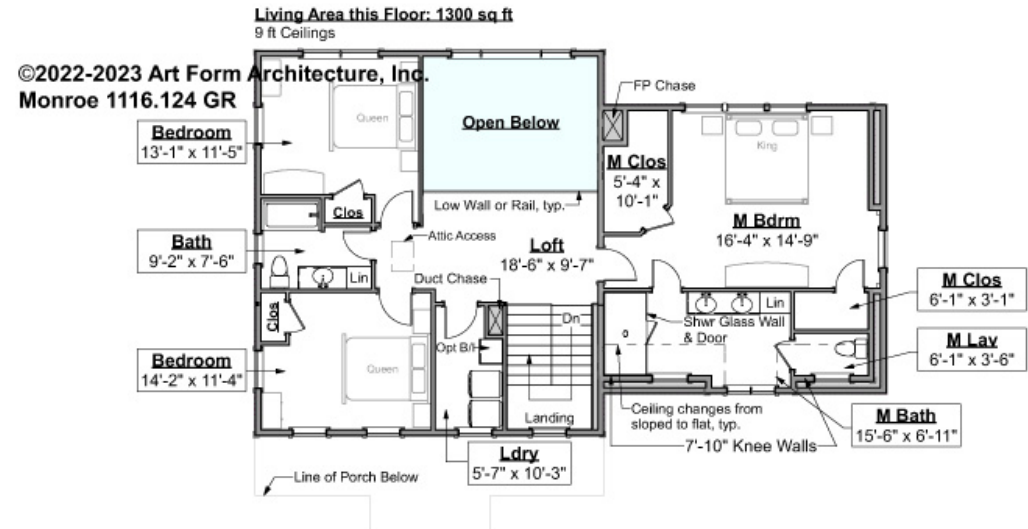
F1 LIVING AREA	933 FT	F1 BEDROOMS	0	F1 BATHROOMS	0.5
Main	933.00 FT	Main	0.00	Main	0.50
Future	FT	Future		Future	
2 nd Unit	FT	2 nd Unit		2 nd Unit	



MONROE - 2ND FLOOR

1116.124 GR

Some features shown are optional. Your Purchase & Sale Agreement governs, whether items are labeled "optional" in this document or not.



CLG HT SHOWN 9'-0" CLG HT POSSIBLE 8'-0"

* Major Change Fee, see website plan page for cost

F1 LIVING AREA	1300 FT	F1 BEDROOMS	3	F1 BATHROOMS	2
Main	1300.00 FT	Main	3.00	Main	2.00
Future	FT	Future		Future	
2 nd Unit	FT	2 nd Unit		2 nd Unit	



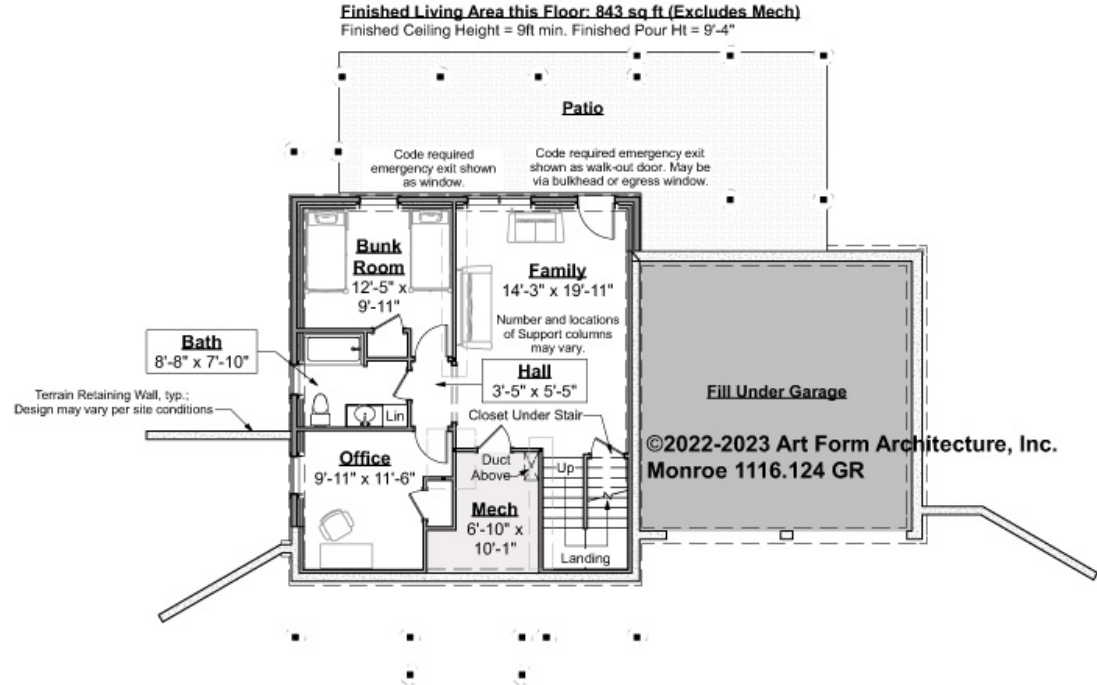
MONROE - BASEMENT

1116.124 GR

Note - to avoid it skewing our Search, we don't include finished basements like these in our data. Everyone knows you can finish a basement, especially if your lot will allow walk out.

But... this is how it's shown in the CDs.

Some features shown are optional. Your Purchase & Sale Agreement governs, whether items are labeled "optional" in this document or not.



CLG HT SHOWN 8'-1" - 8'-11"

CLG HT POSSIBLE 8'-0"

* Major Change Fee, see website plan page for cost

F1 LIVING AREA		F1 BEDROOMS		F1 BATHROOMS	
0	FT	1		0	
Main	0.00	Main	0.00	Main	0.00
Future	FT	Future	1.00	Future	
2 nd Unit	FT	2 nd Unit		2 nd Unit	



MONROE - FRONT ELEVATION

1116.124 GR

Some features shown are optional. Your Purchase & Sale Agreement governs, whether items are labeled "optional" in this document or not.



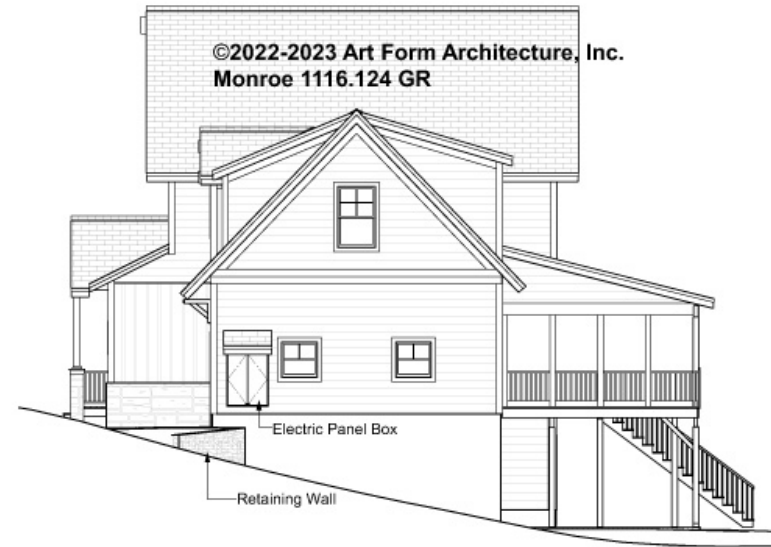


Art Form Architecture, LLC

MONROE - RIGHT ELEVATION

1116.124 GR

Some features shown are optional. Your Purchase & Sale Agreement governs, whether items are labeled "optional" in this document or not.





MONROE - REAR ELEVATION

1116.124 GR

Some features shown are optional. Your Purchase & Sale Agreement governs, whether items are labeled "optional" in this document or not.





MONROE - LEFT ELEVATION

1116.124 GR

Some features shown are optional. Your Purchase & Sale Agreement governs, whether items are labeled "optional" in this document or not.

