



MERLOT COTTAGE

989.124.v10 GL

In addition to our Terms and Conditions (the "Terms"), please be aware of the following:

Art Form Architecture, LLC ("Artform") requires that our Drawings be built substantially as designed. Artform will not be obligated by or liable for use of this design with markups as part of any builder agreement. While we attempt to accommodate where possible and reasonable, and where the changes do not denigrate our design, any and all changes to Drawings must be approved in writing by Artform. It is recommended that you have your Drawing updated by Artform prior to attaching any Drawing to any builder agreement. Artform shall not be responsible for the misuse of or unauthorized alterations to any of its Drawings.



Width 58.00 FT

Depth 66.00 FT

Height 24.33 FT

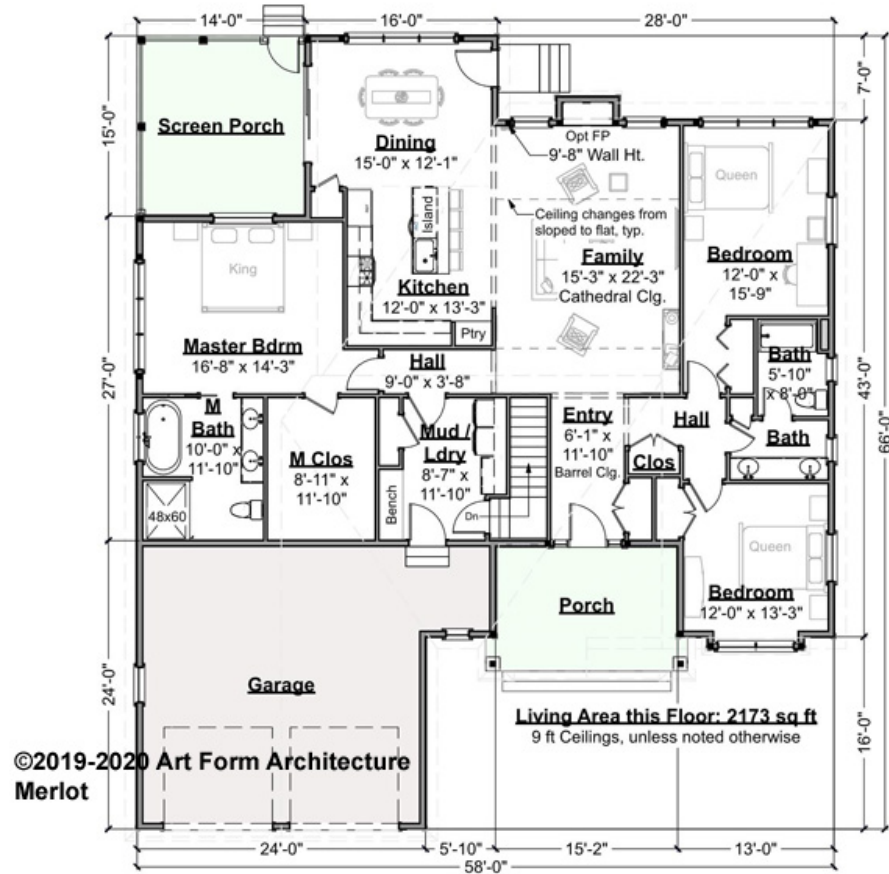
LIVING AREA		BEDROOMS		BATHROOMS	
	2173 FT ²		2		2
Main	2173 FT ²	Main	2	Main	2
Future	0 FT ²	Future	0	Future	0
2 nd Unit	0 FT ²	2 nd Unit	0	2 nd Unit	0



MERLOT COTTAGE - 1ST FLOOR

989.124.v10 GL

Some features shown are optional. Your Purchase & Sale Agreement governs, whether items are labeled "optional" in this document or not.



CLG HT SHOWN 9'-0" CLG HT POSSIBLE 8'-0"

* Major Change Fee, see website plan page for cost

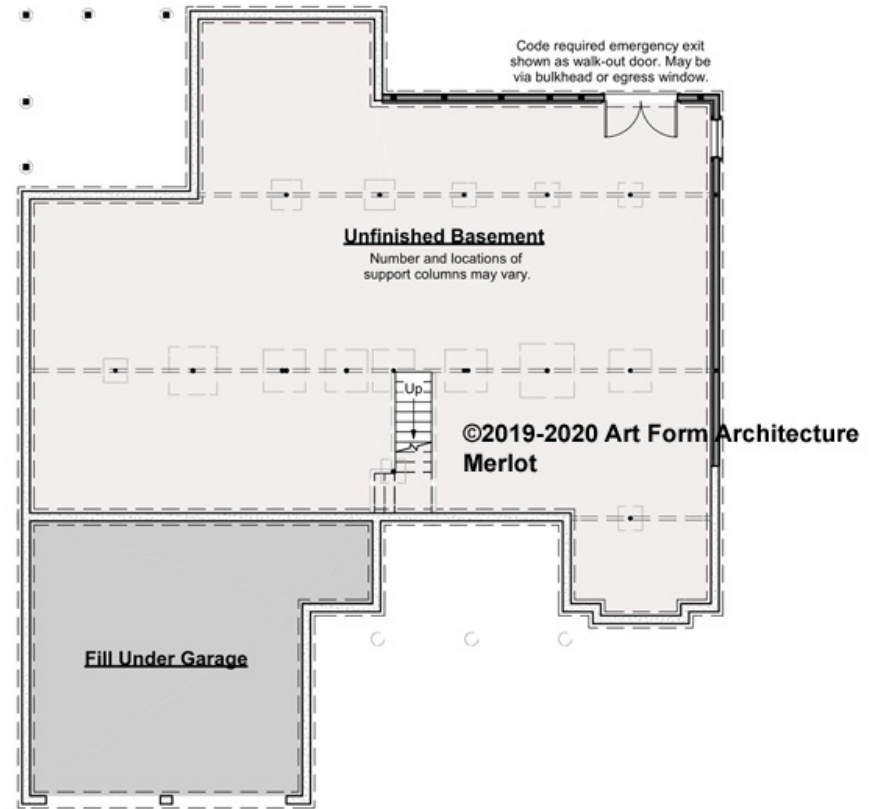
F1 LIVING AREA	2173 ^{FT}	F1 BEDROOMS	2	F1 BATHROOMS	2
Main	2173.00 ^{FT}	Main	2.00	Main	2.00
Future	0.00 ^{FT}	Future	0.00	Future	0.00
2 nd Unit	0.00 ^{FT}	2 nd Unit	0.00	2 nd Unit	0.00



MERLOT COTTAGE - BASEMENT

989.124.v10 GL

Some features shown are optional. Your Purchase & Sale Agreement governs, whether items are labeled "optional" in this document or not.



CLG HT SHOWN 7'-8" CLG HT POSSIBLE 9'-0"

* Major Change Fee, see website plan page for cost

F1 LIVING AREA		F1 BEDROOMS		F1 BATHROOMS	
	0 FT		0		0
Main	0.00 FT	Main	0.00	Main	0.00
Future	0.00 FT	Future	0.00	Future	0.00
2 nd Unit	0.00 FT	2 nd Unit	0.00	2 nd Unit	0.00

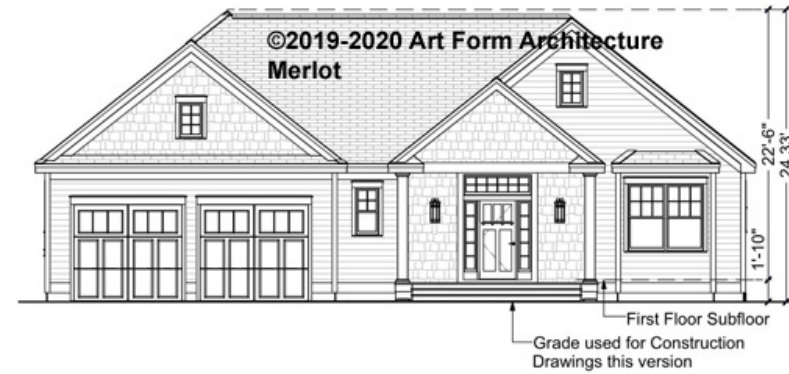


Art Form Architecture, LLC

MERLOT COTTAGE - FRONT ELEVATION

989.124.v10 GL

Some features shown are optional. Your Purchase & Sale Agreement governs, whether items are labeled "optional" in this document or not.



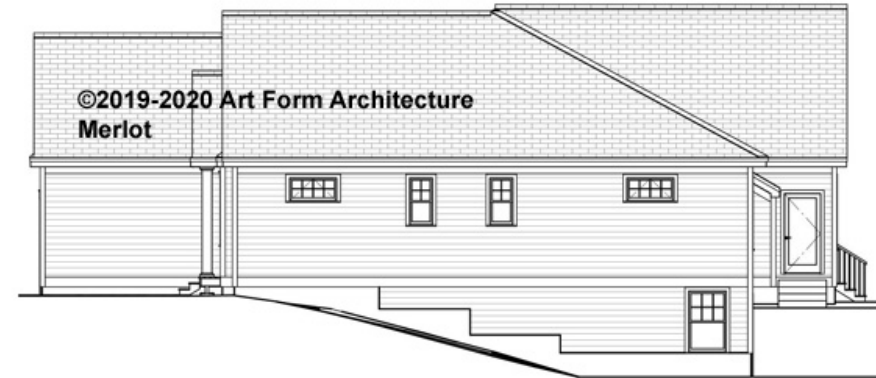


Art Form Architecture, LLC

MERLOT COTTAGE - RIGHT ELEVATION

989.124.v10 GL

—
Some features shown are optional. Your Purchase & Sale Agreement governs, whether items are labeled "optional" in this document or not.



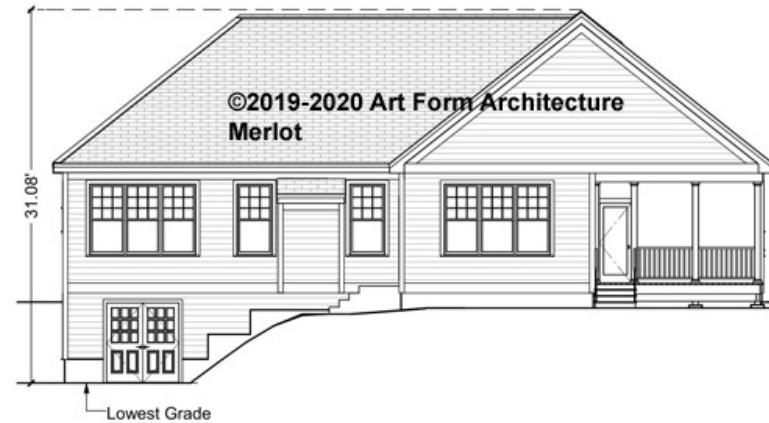


Art Form Architecture, LLC

MERLOT COTTAGE - REAR ELEVATION

989.124.v10 GL

Some features shown are optional. Your Purchase & Sale Agreement governs, whether items are labeled "optional" in this document or not.





Art Form Architecture, LLC

MERLOT COTTAGE - LEFT ELEVATION

989.124.v10 GL

Some features shown are optional. Your Purchase & Sale Agreement governs, whether items are labeled "optional" in this document or not.

