



# KIPP

## 960.126 ER

In addition to our Terms and Conditions (the "Terms"), please be aware of the following:

Art Form Architecture, LLC ("Artform") requires that our Drawings be built substantially as designed. Artform will not be obligated by or liable for use of this design with markups as part of any builder agreement. While we attempt to accommodate where possible and reasonable, and where the changes do not denigrate our design, any and all changes to Drawings must be approved in writing by Artform. It is recommended that you have your Drawing updated by Artform prior to attaching any Drawing to any builder agreement. Artform shall not be responsible for the misuse of or unauthorized alterations to any of its Drawings.



©2018 Art Form Architecture  
Kipp  
Artform Home Plans

Width 40.00 FT

Depth 58.00 FT

Height 30.25 FT

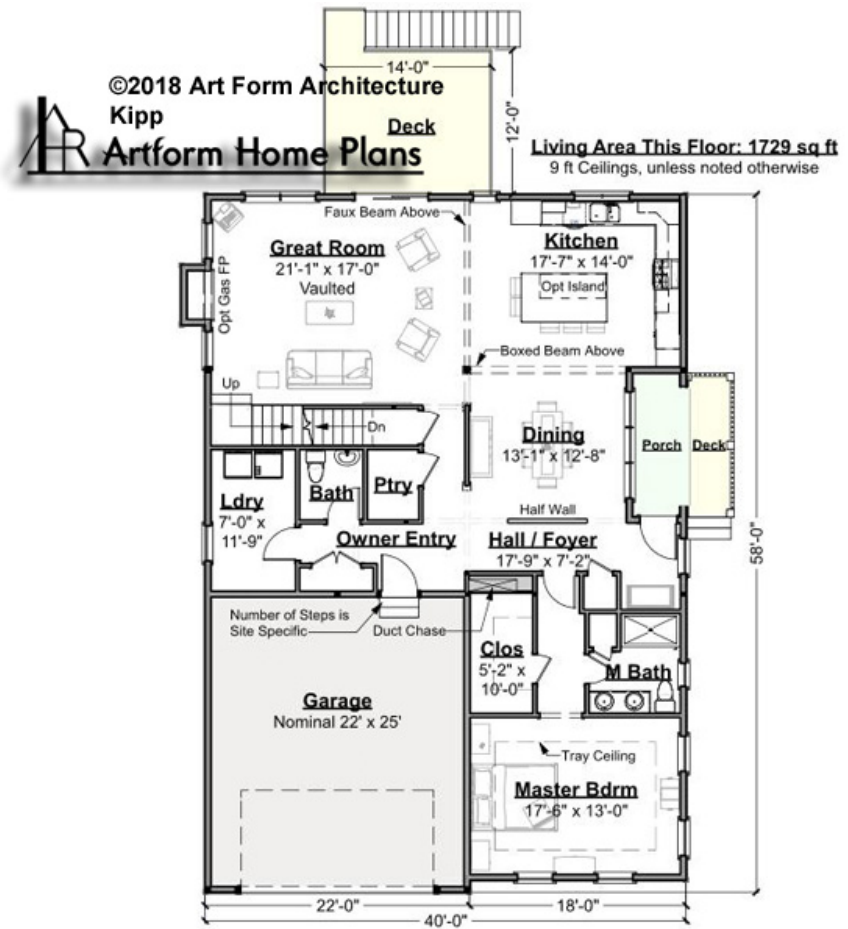
| LIVING AREA          |         | BEDROOMS             |   | BATHROOMS            |     |
|----------------------|---------|----------------------|---|----------------------|-----|
|                      | 2704 FT |                      | 2 |                      | 2.5 |
| Main                 | 2704 FT | Main                 | 2 | Main                 | 2.5 |
| Future               | 0 FT    | Future               | 0 | Future               | 0   |
| 2 <sup>nd</sup> Unit | 0 FT    | 2 <sup>nd</sup> Unit | 0 | 2 <sup>nd</sup> Unit | 0   |



# KIPP - 1<sup>ST</sup> FLOOR

960.126 ER

Some features shown are optional. Your Purchase & Sale Agreement governs, whether items are labeled "optional" in this document or not.



CLG HT SHOWN 9'-0"      CLG HT POSSIBLE 8'-0"

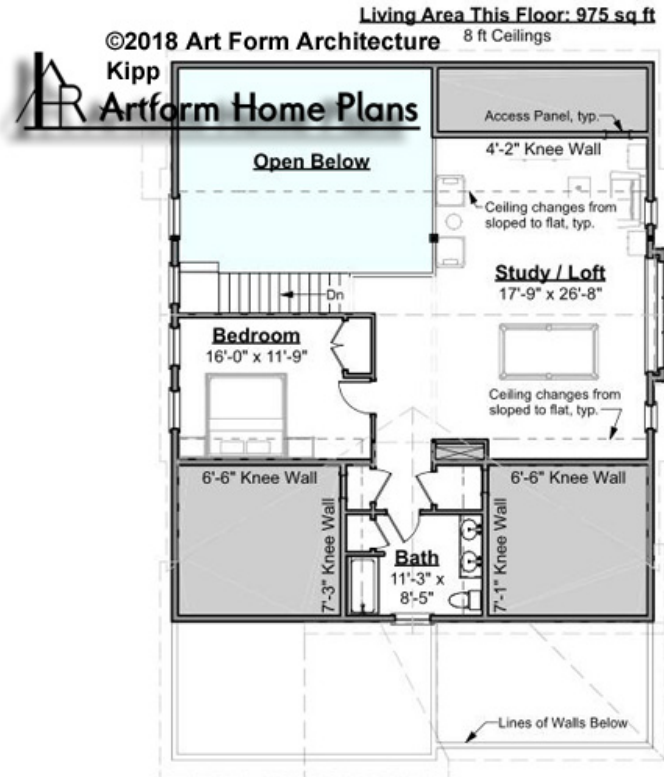
\* Major Change Fee, see website plan page for cost

| F1 LIVING AREA       | 1729 <sup>FT</sup>    | F1 BEDROOMS          | 1    | F1 BATHROOMS         | 1.5  |
|----------------------|-----------------------|----------------------|------|----------------------|------|
| Main                 | 1729.00 <sup>FT</sup> | Main                 | 1.00 | Main                 | 1.50 |
| Future               | 0.00 <sup>FT</sup>    | Future               | 0.00 | Future               | 0.00 |
| 2 <sup>nd</sup> Unit | 0.00 <sup>FT</sup>    | 2 <sup>nd</sup> Unit | 0.00 | 2 <sup>nd</sup> Unit | 0.00 |



**KIPP - 2<sup>ND</sup> FLOOR**  
**960.126 ER**

Some features shown are optional. Your Purchase & Sale Agreement governs, whether items are labeled "optional" in this document or not.



**CLG HT SHOWN 8'-0"      CLG HT POSSIBLE 9'-0"**

*\* Major Change Fee, see website plan page for cost*

| F1 LIVING AREA       |                      | F1 BEDROOMS          |      | F1 BATHROOMS         |      |
|----------------------|----------------------|----------------------|------|----------------------|------|
|                      | 975 <sup>FT</sup>    |                      | 1    |                      | 1    |
| Main                 | 975.00 <sup>FT</sup> | Main                 | 1.00 | Main                 | 1.00 |
| Future               | 0.00 <sup>FT</sup>   | Future               | 0.00 | Future               | 0.00 |
| 2 <sup>nd</sup> Unit | 0.00 <sup>FT</sup>   | 2 <sup>nd</sup> Unit | 0.00 | 2 <sup>nd</sup> Unit | 0.00 |

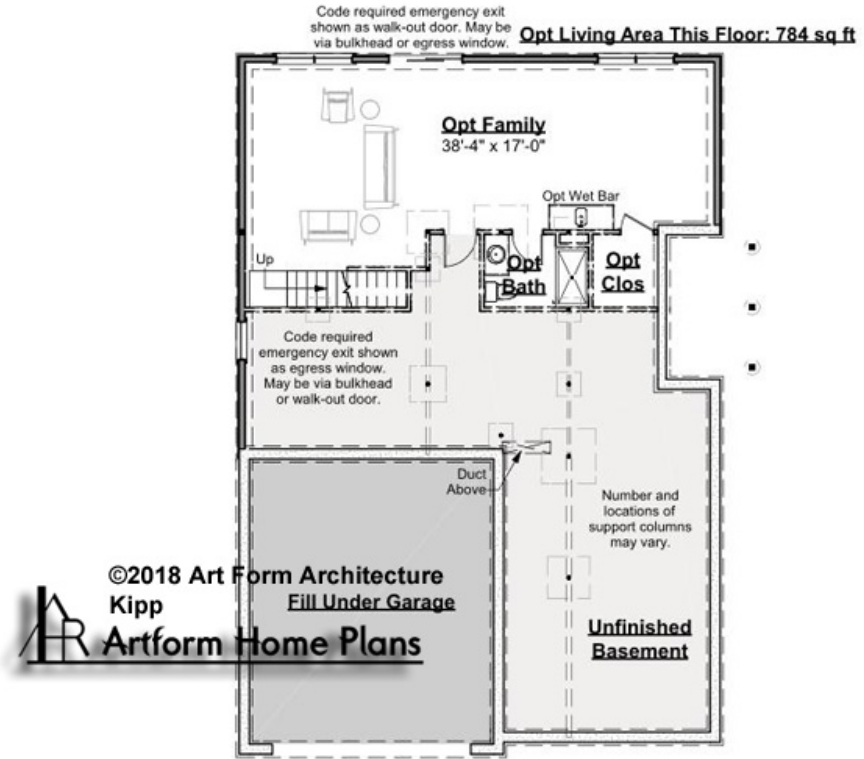


# KIPP - BASEMENT

## 960.126 ER

The construction drawings show this lower level as partly finished. We don't include that in our data chart so Search isn't misleading. Everybody knows you can finish a basement!

Some features shown are optional. Your Purchase & Sale Agreement governs, whether items are labeled "optional" in this document or not.



CLG HT SHOWN 7'-8"      CLG HT POSSIBLE 9'-0"

\* Major Change Fee, see website plan page for cost

| F1 LIVING AREA       |      | F1 BEDROOMS          |      | F1 BATHROOMS         |      |
|----------------------|------|----------------------|------|----------------------|------|
| 0                    | FT   | 0                    |      | 0                    |      |
| Main                 | 0.00 | Main                 | 0.00 | Main                 | 0.00 |
| Future               | FT   | Future               | 0.00 | Future               |      |
| 2 <sup>nd</sup> Unit | 0.00 | 2 <sup>nd</sup> Unit | 0.00 | 2 <sup>nd</sup> Unit | 0.00 |



Art Form Architecture, LLC

## KIPP - FRONT ELEVATION

960.126 ER

Some features shown are optional. Your Purchase & Sale Agreement governs, whether items are labeled "optional" in this document or not.



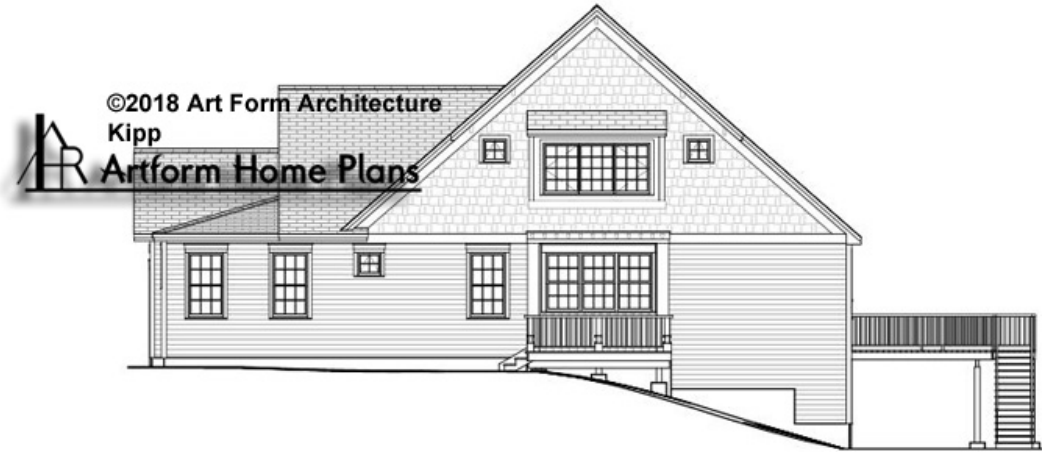


Art Form Architecture, LLC

## KIPP - RIGHT ELEVATION

960.126 ER

Some features shown are optional. Your Purchase & Sale Agreement governs, whether items are labeled "optional" in this document or not.



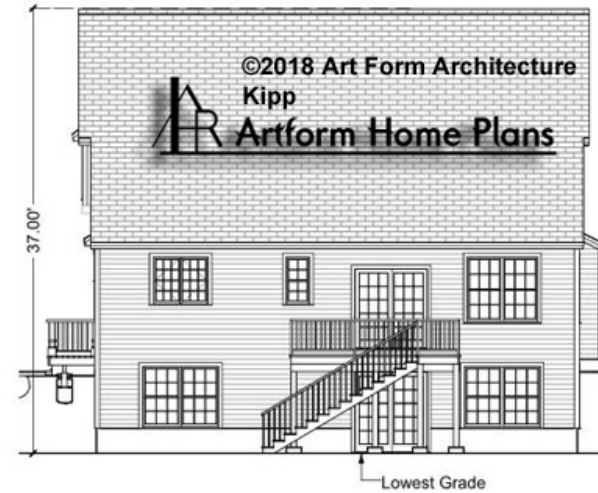


Art Form Architecture, LLC

## KIPP - REAR ELEVATION

960.126 ER

Some features shown are optional. Your Purchase & Sale Agreement governs, whether items are labeled "optional" in this document or not.





## KIPP - LEFT ELEVATION

960.126 ER

Some features shown are optional. Your Purchase & Sale Agreement governs, whether items are labeled "optional" in this document or not.

