



KAI

1128.124.v3 GL

In addition to our Terms and Conditions (the "Terms"), please be aware of the following:

Art Form Architecture, LLC ("Artform") requires that our Drawings be built substantially as designed. Artform will not be obligated by or liable for use of this design with markups as part of any builder agreement. While we attempt to accommodate where possible and reasonable, and where the changes do not denigrate our design, any and all changes to Drawings must be approved in writing by Artform. It is recommended that you have your Drawing updated by Artform prior to attaching any Drawing to any builder agreement. Artform shall not be responsible for the misuse of or unauthorized alterations to any of its Drawings.



Width 46.00 FT

Depth 77.00 FT

Height 28.00 FT

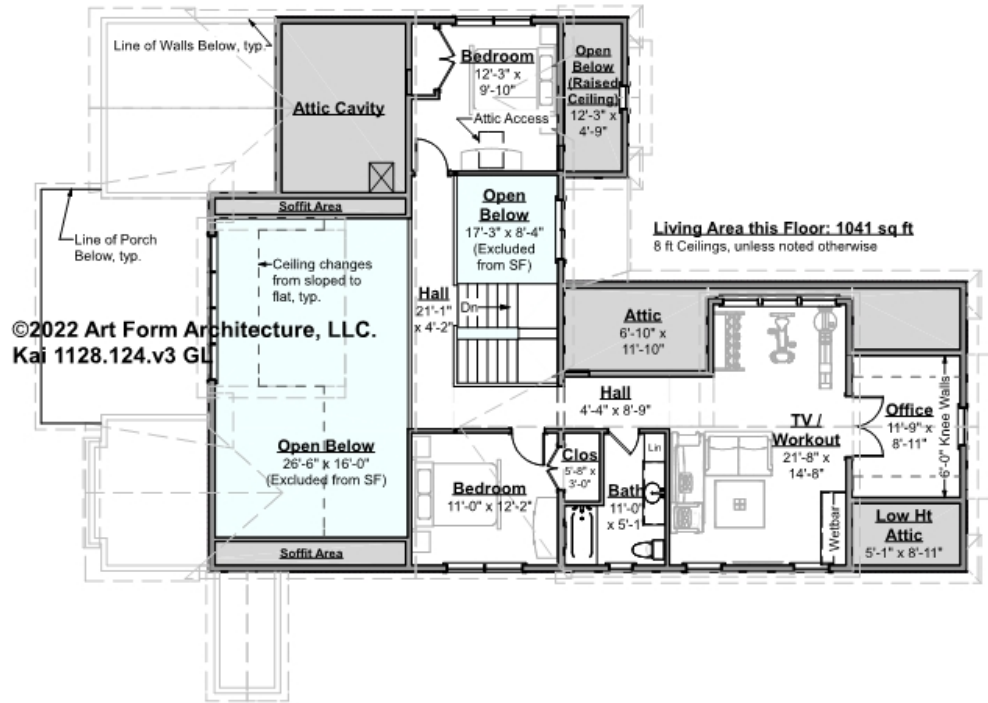
LIVING AREA		BEDROOMS		BATHROOMS	
	2792 FT		3		2.5
Main	2792 FT	Main	3	Main	2.5
Future	0 FT	Future	0	Future	0
2 nd Unit	0 FT	2 nd Unit	0	2 nd Unit	0



KAI - 2ND FLOOR

1128.124.v3 GL

Some features shown are optional. Your Purchase & Sale Agreement governs, whether items are labeled "optional" in this document or not.



CLG HT SHOWN 8'-0" CLG HT POSSIBLE 9'-0"

* Major Change Fee, see website plan page for cost

F1 LIVING AREA	1041 ^{FT}	F1 BEDROOMS	2	F1 BATHROOMS	1
Main	1041.00 ^{FT}	Main	2.00	Main	1.00
Future	FT	Future		Future	
2 nd Unit	FT	2 nd Unit		2 nd Unit	

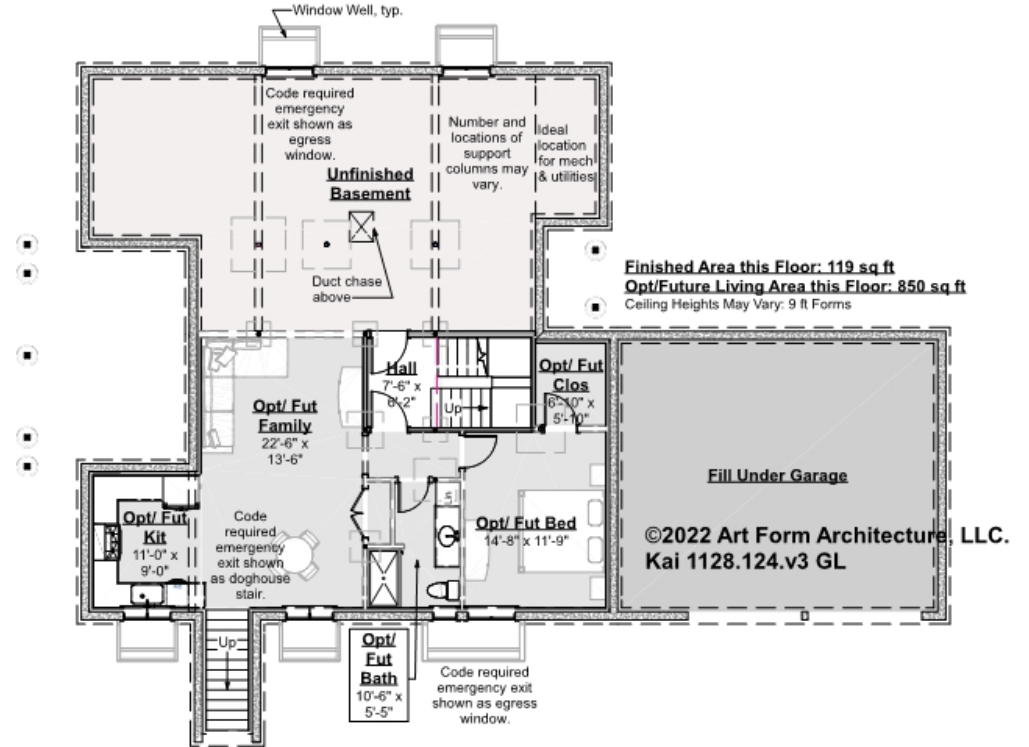


KAI - BASEMENT

1128.124.v3 GL

Note: Opt/Future finished basement is NOT included in main Living Area or in SF, but IS shown on CDs.

Some features shown are optional. Your Purchase & Sale Agreement governs, whether items are labeled "optional" in this document or not.



CLG HT SHOWN 8'-1" - 8'-11"

CLG HT POSSIBLE 10' & Up

* Major Change Fee, see website plan page for cost

F1 LIVING AREA		F1 BEDROOMS		F1 BATHROOMS	
0	FT	0		0	
Main	FT	Main		Main	
Future	FT	Future		Future	
2 nd Unit	FT	2 nd Unit		2 nd Unit	



Art Form Architecture, LLC

KAI - FRONT & RIGHT ELEVATIONS 1128.124.v3 GL

Some features shown are optional. Your Purchase & Sale Agreement governs, whether items are labeled "optional" in this document or not.





KAI - REAR & LEFT ELEVATIONS 1128.124.v3 GL

Some features shown are optional. Your Purchase & Sale Agreement governs, whether items are labeled "optional" in this document or not.





Art Form Architecture, LLC

KAI - REAR RENDER

1128.124.v3 GL

Some features shown are optional. Your Purchase & Sale Agreement governs, whether items are labeled "optional" in this document or not.

