



JESSAMINE

1019.127 GL

In addition to our Terms and Conditions (the "Terms"), please be aware of the following:

Art Form Architecture, LLC ("Artform") requires that our Drawings be built substantially as designed. Artform will not be obligated by or liable for use of this design with markups as part of any builder agreement. While we attempt to accommodate where possible and reasonable, and where the changes do not denigrate our design, any and all changes to Drawings must be approved in writing by Artform. It is recommended that you have your Drawing updated by Artform prior to attaching any Drawing to any builder agreement. Artform shall not be responsible for the misuse of or unauthorized alterations to any of its Drawings.



Width 60.00 FT

Depth 158.00 FT

Height 31.08 FT

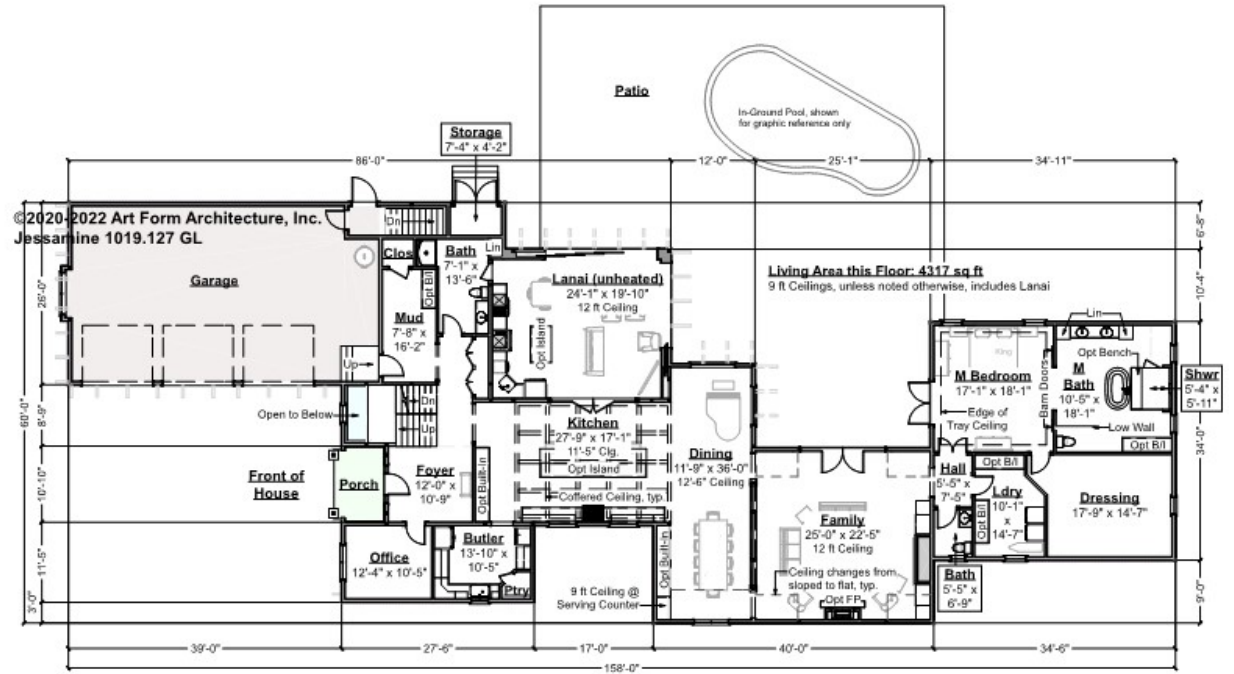
LIVING AREA		BEDROOMS		BATHROOMS	
	6796 FT ²		4		3.5
Main	6796 FT ²	Main	3	Main	3.5
Future	0 FT ²	Future	1	Future	0
2 nd Unit	0 FT ²	2 nd Unit	0	2 nd Unit	0



JESSAMINE - 1ST FLOOR

1019.127 GL

Some features shown are optional. Your Purchase & Sale Agreement governs, whether items are labeled "optional" in this document or not.



CLG HT SHOWN 9'-0" CLG HT POSSIBLE 8'-0"

* Major Change Fee, see website plan page for cost

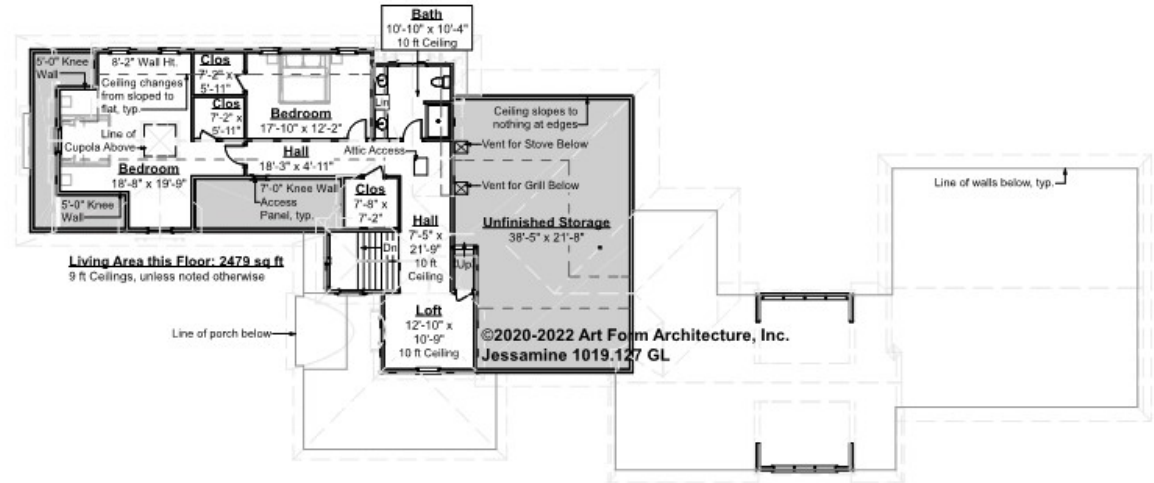
F1 LIVING AREA	4317 FT	F1 BEDROOMS	2	F1 BATHROOMS	2.5
Main	4317.00 FT	Main	1.00	Main	2.50
Future	FT	Future	1.00	Future	
2 nd Unit	FT	2 nd Unit		2 nd Unit	



JESSAMINE - 2ND FLOOR

1019.127 GL

Some features shown are optional. Your Purchase & Sale Agreement governs, whether items are labeled "optional" in this document or not.



CLG HT SHOWN 9'-0" **CLG HT POSSIBLE 8'-0"**

** Major Change Fee, see website plan page for cost*

F1 LIVING AREA	2479 FT	F1 BEDROOMS	2	F1 BATHROOMS	1
Main	2479.00 FT	Main	2.00	Main	1.00
Future	FT	Future		Future	
2 nd Unit	FT	2 nd Unit		2 nd Unit	

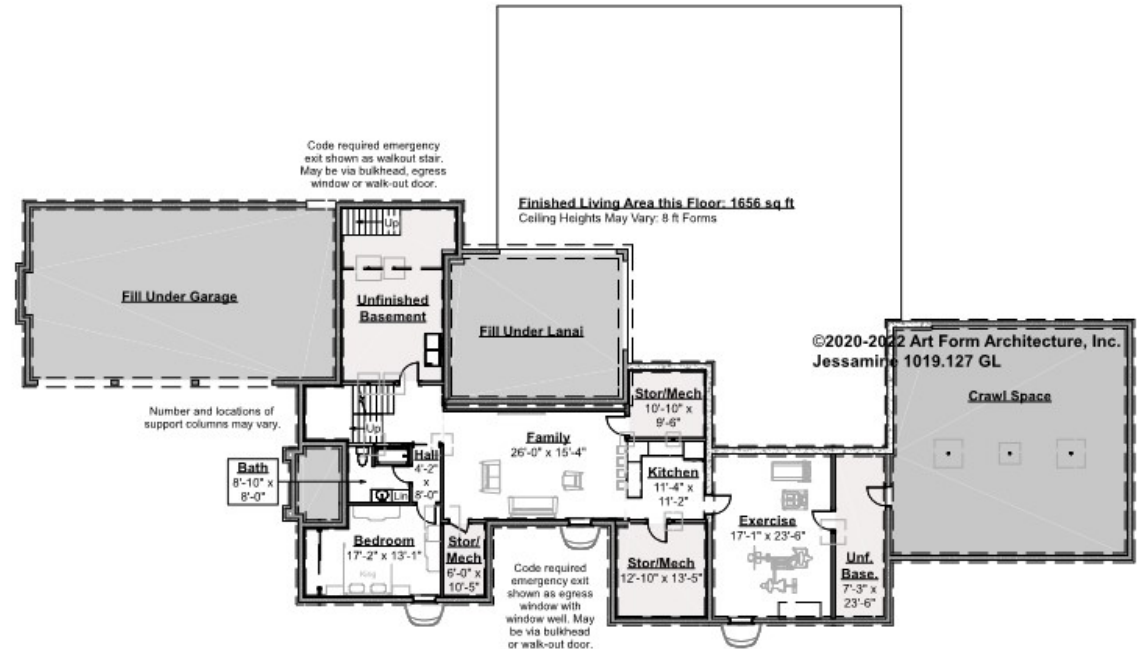


JESSAMINE - BASEMENT

1019.127 GL

Note: finished basement area is NOT included in main or future Living Area, but IS shown on CDs. We do this so Search doesn't mislead.

Some features shown are optional. Your Purchase & Sale Agreement governs, whether items are labeled "optional" in this document or not.



©2020-2022 Art Form Architecture, Inc.
Jessamine 1019.127 GL

CLG HT SHOWN 8'-0"

CLG HT POSSIBLE 9'-0"

* Major Change Fee, see website plan page for cost

F1 LIVING AREA		F1 BEDROOMS		F1 BATHROOMS	
0	FT	0		0	
Main	FT	Main		Main	
Future	FT	Future		Future	
2 nd Unit	FT	2 nd Unit		2 nd Unit	



Art Form Architecture, LLC

JESSAMINE - FRONT & RIGHT ELEVATIONS

1019.127 GL

Some features shown are optional. Your Purchase & Sale Agreement governs, whether items are labeled "optional" in this document or not.



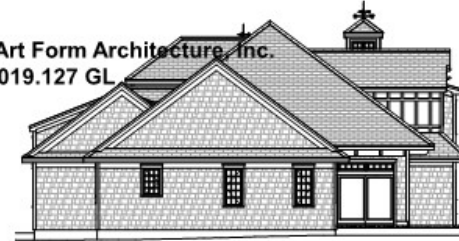


Art Form Architecture, LLC

JESSAMINE - REAR & LEFT ELEVATIONS 1019.127 GL

Some features shown are optional. Your Purchase & Sale Agreement governs, whether items are labeled "optional" in this document or not.

©2020-2022 Art Form Architecture, Inc.
Jessamine 1019.127 GL





Art Form Architecture, LLC

JESSAMINE - REAR RENDER

1019.127 GL

Some features shown are optional. Your Purchase & Sale Agreement governs, whether items are labeled "optional" in this document or not.

