



HORNBEAM

1081.120 GL

Note - this fits the Hampton NH coastal rules where the living area have to be lifted off grade and a height credit is given in concert.

In addition to our Terms and Conditions (the "Terms"), please be aware of the following:

Art Form Architecture, LLC ("Artform") requires that our Drawings be built substantially as designed. Artform will not be obligated by or liable for use of this design with markups as part of any builder agreement. While we attempt to accommodate where possible and reasonable, and where the changes do not denigrate our design, any and all changes to Drawings must be approved in writing by Artform. It is recommended that you have your Drawing updated by Artform prior to attaching any Drawing to any builder agreement. Artform shall not be responsible for the misuse of or unauthorized alterations to any of its Drawings.



©2021-2023 Art Form Architecture, Inc.
Hornbeam 1081.120 GL

Width 44.00 FT

Depth 35.00 FT

Height 37.42 FT

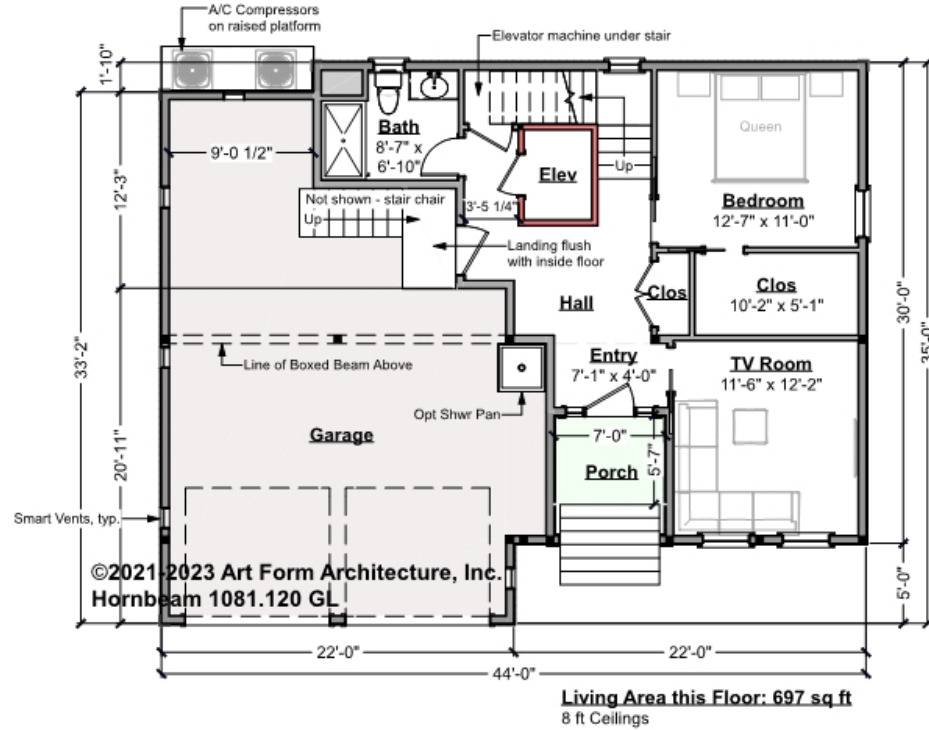
LIVING AREA		BEDROOMS		BATHROOMS	
	3120 FT		7		4
Main	3120 FT	Main	5	Main	4
Future	0 FT	Future	2	Future	0
2 nd Unit	0 FT	2 nd Unit	0	2 nd Unit	0



HORNBEAM - 1ST FLOOR

1081.120 GL

Some features shown are optional. Your Purchase & Sale Agreement governs, whether items are labeled "optional" in this document or not.



CLG HT SHOWN 8'-0" CLG HT POSSIBLE 8'-0"

* Major Change Fee, see website plan page for cost

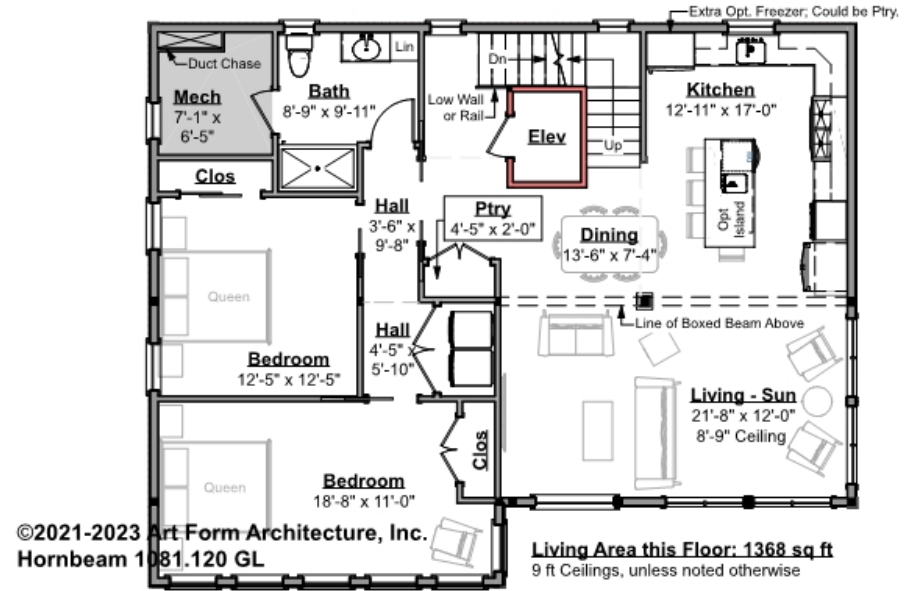
F1 LIVING AREA		F1 BEDROOMS		F1 BATHROOMS	
Main	697.00 FT	Main	1.00	Main	1.00
Future	FT	Future	1.00	Future	
2 nd Unit	FT	2 nd Unit		2 nd Unit	



HORNBEAM - 2ND FLOOR

1081.120 GL

Some features shown are optional. Your Purchase & Sale Agreement governs, whether items are labeled "optional" in this document or not.



CLG HT SHOWN 9'-0" CLG HT POSSIBLE 8'-0"

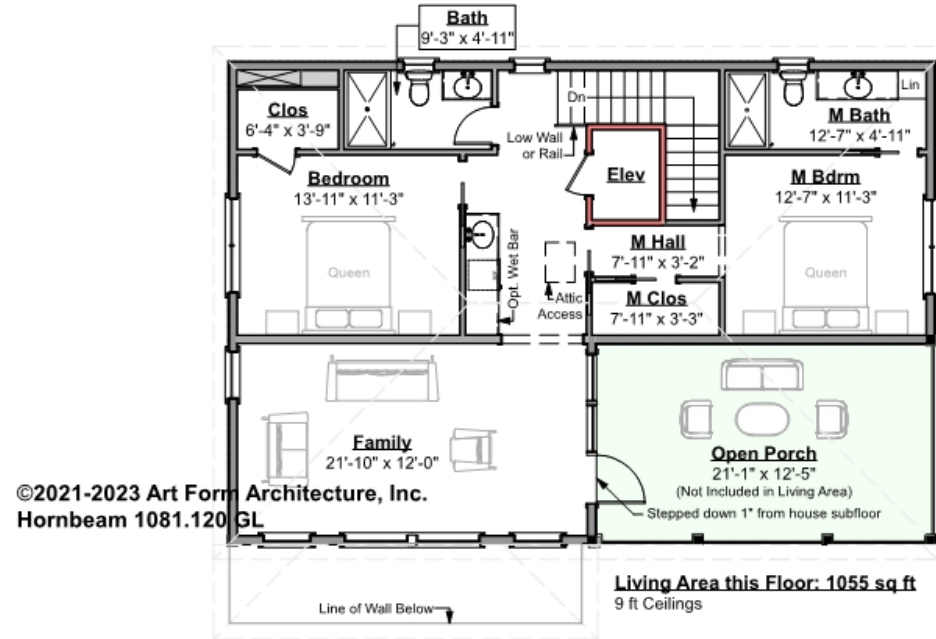
* Major Change Fee, see website plan page for cost

F1 LIVING AREA	1368 FT	F1 BEDROOMS	2	F1 BATHROOMS	1
Main	1368.00 FT	Main	2.00	Main	1.00
Future	FT	Future		Future	
2 nd Unit	FT	2 nd Unit		2 nd Unit	



HORNBEAM - 3RD FLOOR 1081.120 GL

Some features shown are optional. Your Purchase & Sale Agreement governs, whether items are labeled "optional" in this document or not.



CLG HT SHOWN 9'-0" CLG HT POSSIBLE 8'-0"

* Major Change Fee, see website plan page for cost

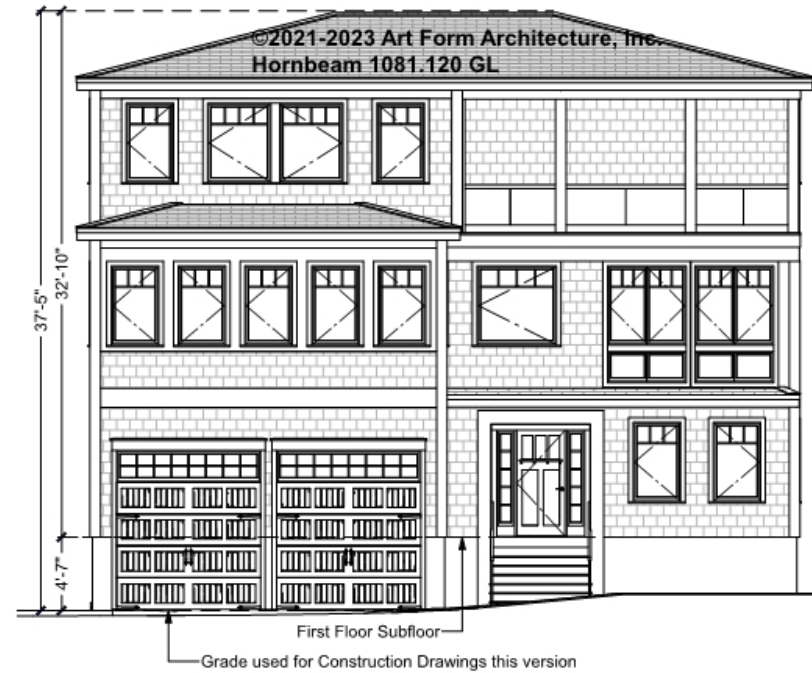
F1 LIVING AREA	1055 FT	F1 BEDROOMS	3	F1 BATHROOMS	2
Main	1055.00 FT	Main	2.00	Main	2.00
Future	FT	Future	1.00	Future	
2 nd Unit	FT	2 nd Unit		2 nd Unit	



HORNBEAM - FRONT ELEVATION

1081.120 GL

Some features shown are optional. Your Purchase & Sale Agreement governs, whether items are labeled "optional" in this document or not.





Art Form Architecture, LLC

HORNBEAM - RIGHT ELEVATION 1081.120 GL

Some features shown are optional. Your Purchase & Sale Agreement governs, whether items are labeled "optional" in this document or not.



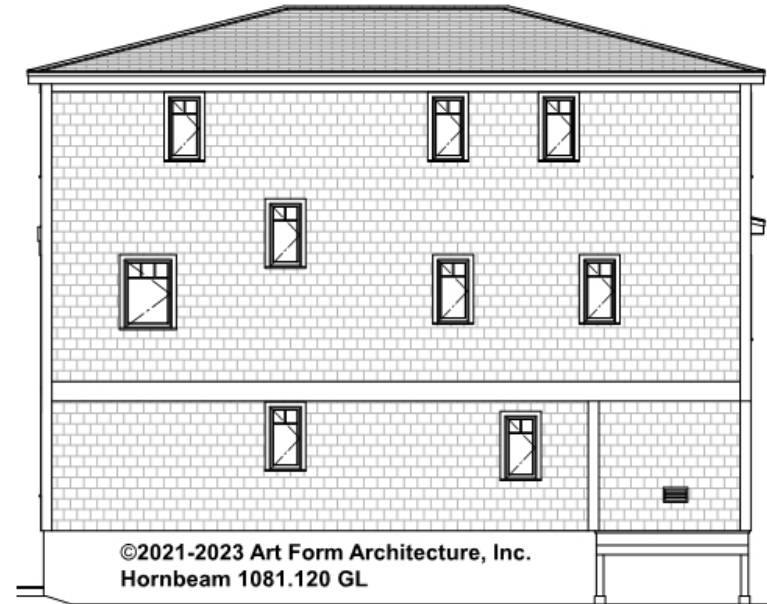


Art Form Architecture, LLC

HORNBEAM - REAR ELEVATION

1081.120 GL

Some features shown are optional. Your Purchase & Sale Agreement governs, whether items are labeled "optional" in this document or not.





Art Form Architecture, LLC

HORNBEAM - LEFT ELEVATION

1081.120 GL

Some features shown are optional. Your Purchase & Sale Agreement governs, whether items are labeled "optional" in this document or not.

