



HIGH SKIPPER

389.120.v7 GR

In addition to our Terms and Conditions (the "Terms"), please be aware of the following:

Art Form Architecture, LLC ("Artform") requires that our Drawings be built substantially as designed. Artform will not be obligated by or liable for use of this design with markups as part of any builder agreement. While we attempt to accommodate where possible and reasonable, and where the changes do not denigrate our design, any and all changes to Drawings must be approved in writing by Artform. It is recommended that you have your Drawing updated by Artform prior to attaching any Drawing to any builder agreement. Artform shall not be responsible for the misuse of or unauthorized alterations to any of its Drawings.



Width 40.00 FT

Depth 38.00 FT

Height 31.16 FT

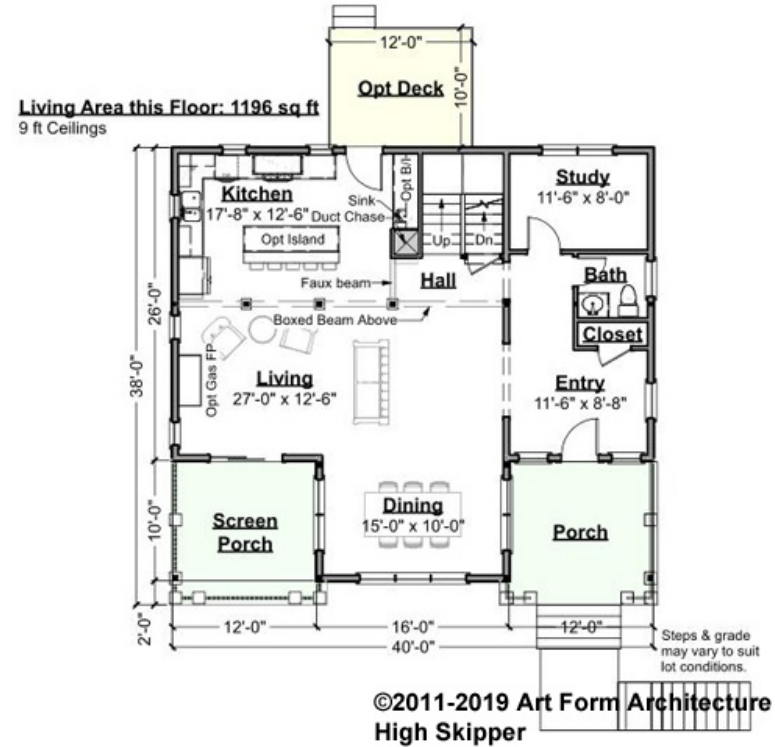
LIVING AREA		BEDROOMS		BATHROOMS	
	2429 FT		4		2.5
Main	2429 FT	Main	3	Main	2.5
Future	0 FT	Future	1	Future	0
2 nd Unit	0 FT	2 nd Unit	0	2 nd Unit	0



HIGH SKIPPER - 1ST FLOOR

389.120.v7 GR

Some features shown are optional. Your Purchase & Sale Agreement governs, whether items are labeled "optional" in this document or not.



CRS 389.120.v7 GR High Skipper

CLG HT SHOWN 9'-0" CLG HT POSSIBLE 8'-0"

* Major Change Fee, see website plan page for cost

F1 LIVING AREA	1196 ^{FT}	F1 BEDROOMS	1	F1 BATHROOMS	0.5
Main	1196.00 ^{FT}	Main	0.00	Main	0.50
Future	0.00 ^{FT}	Future	1.00	Future	0.00
2 nd Unit	0.00 ^{FT}	2 nd Unit	0.00	2 nd Unit	0.00



Art Form Architecture, LLC

HIGH SKIPPER - 1ST FLOOR

389.120.v7 GR

Some features shown are optional. Your Purchase & Sale Agreement governs, whether items are labeled "optional" in this document or not.



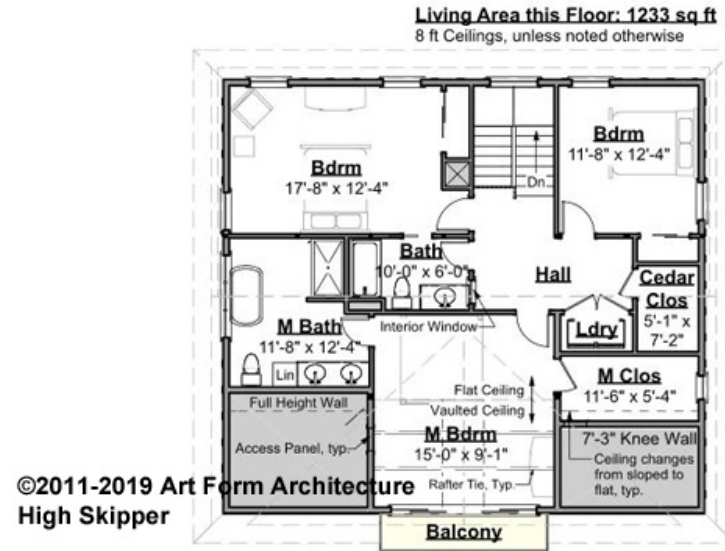
Living & Kitchen - Additional Image



HIGH SKIPPER - 2ND FLOOR

389.120.v7 GR

Some features shown are optional. Your Purchase & Sale Agreement governs, whether items are labeled "optional" in this document or not.



CRS 389.120.v7 GR High Skipper

CLG HT SHOWN 8'-0" CLG HT POSSIBLE 9'-0"

** Major Change Fee, see website plan page for cost*

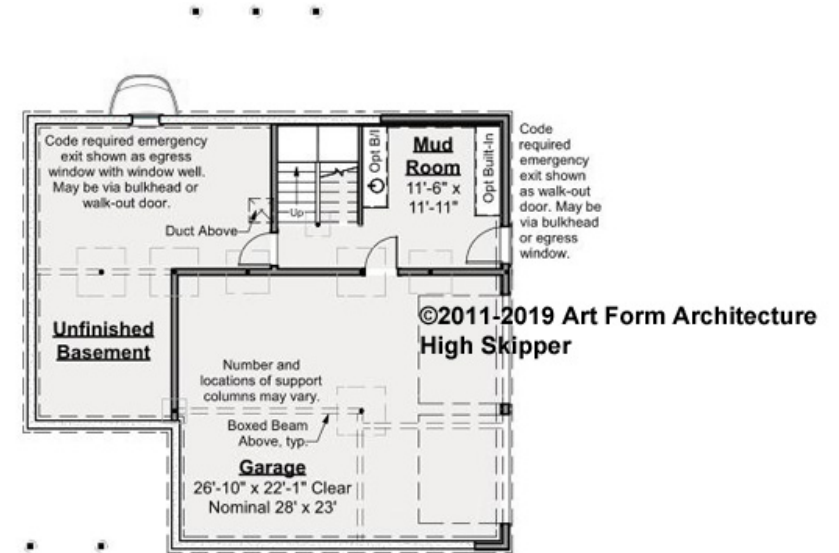
F1 LIVING AREA		F1 BEDROOMS		F1 BATHROOMS	
	1233 ^{FT}		3		2
Main	1233.00 ^{FT}	Main	3.00	Main	2.00
Future	0.00 ^{FT}	Future	0.00	Future	0.00
2 nd Unit	0.00 ^{FT}	2 nd Unit	0.00	2 nd Unit	0.00



HIGH SKIPPER - BASEMENT

389.120.v7 GR

Some features shown are optional. Your Purchase & Sale Agreement governs, whether items are labeled "optional" in this document or not.



CRS 389.120.v7 GR High Skipper

CLG HT SHOWN 7'-8" CLG HT POSSIBLE 7'-8"

* Major Change Fee, see website plan page for cost

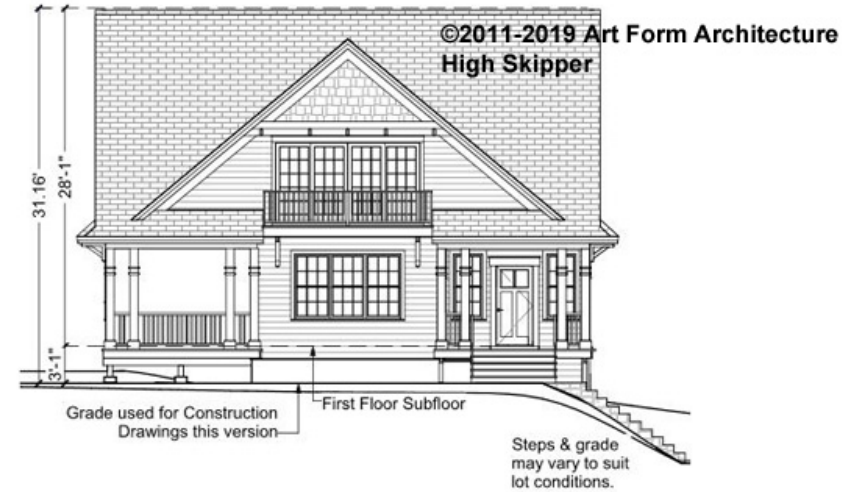
F1 LIVING AREA		F1 BEDROOMS		F1 BATHROOMS	
	0 FT		0		0
Main	0.00 FT	Main	0.00	Main	0.00
Future	0.00 FT	Future	0.00	Future	0.00
2 nd Unit	0.00 FT	2 nd Unit	0.00	2 nd Unit	0.00



HIGH SKIPPER - FRONT ELEVATION

389.120.v7 GR

Some features shown are optional. Your Purchase & Sale Agreement governs, whether items are labeled "optional" in this document or not.



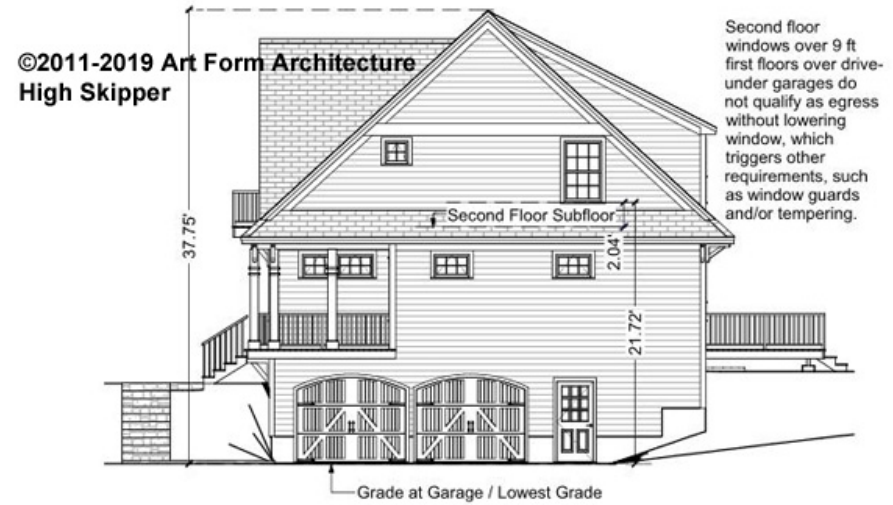
CRS 389.120.v7 GR High Skipper



HIGH SKIPPER - RIGHT ELEVATION

389.120.v7 GR

Some features shown are optional. Your Purchase & Sale Agreement governs, whether items are labeled "optional" in this document or not.



CRS 389.120.v7 GR High Skipper

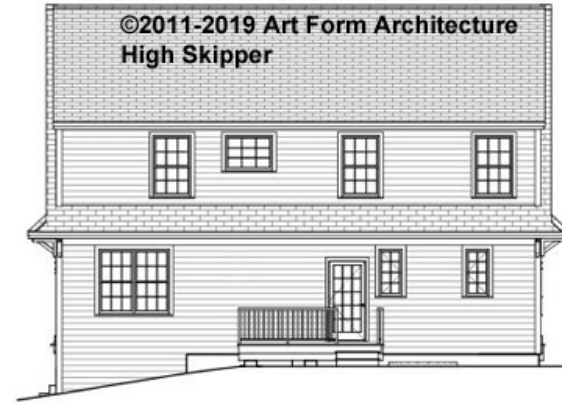


Art Form Architecture, LLC

HIGH SKIPPER - REAR ELEVATION

389.120.v7 GR

Some features shown are optional. Your Purchase & Sale Agreement governs, whether items are labeled "optional" in this document or not.



CRS 389.120.v7 GR High Skipper



Art Form Architecture, LLC

HIGH SKIPPER - LEFT ELEVATION

389.120.v7 GR

Some features shown are optional. Your Purchase & Sale Agreement governs, whether items are labeled "optional" in this document or not.



CRS 389.120.v7 GR High Skipper