



HEIDI
911.500

In addition to our Terms and Conditions (the "Terms"), please be aware of the following:

Art Form Architecture, LLC ("Artform") requires that our Drawings be built substantially as designed. Artform will not be obligated by or liable for use of this design with markups as part of any builder agreement. While we attempt to accommodate where possible and reasonable, and where the changes do not denigrate our design, any and all changes to Drawings must be approved in writing by Artform. It is recommended that you have your Drawing updated by Artform prior to attaching any Drawing to any builder agreement. Artform shall not be responsible for the misuse of or unauthorized alterations to any of its Drawings.



Width 20.00 FT

Depth 59.00 FT

Height 33.62 FT

LIVING AREA		BEDROOMS		BATHROOMS	
	2864 FT		6		2.5
Main	2264 FT	Main	3	Main	2.5
Future	600 FT	Future	3	Future	0
2 nd Unit	0 FT	2 nd Unit	0	2 nd Unit	0



HEIDI - 1ST FLOOR

911.500

Some features shown are optional. Your Purchase & Sale Agreement governs, whether items are labeled "optional" in this document or not.



CRS 911.500 Heidi

CLG HT SHOWN 9'-0" CLG HT POSSIBLE 8'-0"

* Major Change Fee, see website plan page for cost

F1 LIVING AREA		F1 BEDROOMS		F1 BATHROOMS	
	1144 ^{FT}		1		0.5
Main	1144.00 ^{FT}	Main	0.00	Main	0.50
Future	0.00 ^{FT}	Future	1.00	Future	0.00
2 nd Unit	0.00 ^{FT}	2 nd Unit	0.00	2 nd Unit	0.00

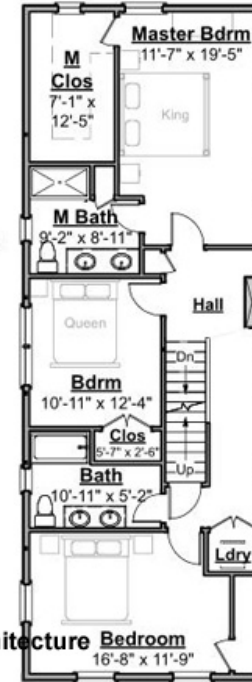


HEIDI - 2ND FLOOR

911.500

Some features shown are optional. Your Purchase & Sale Agreement governs, whether items are labeled "optional" in this document or not.

Living Area this Floor: 1120 sq ft
8'-0" Ceiling Heights



©2017-2019 Art Form Architecture
Heidi
Artform Home Plans

CRS 911.500 Heidi

CLG HT SHOWN 8'-0"

CLG HT POSSIBLE 8'-0"

* Major Change Fee, see website plan page for cost

F1 LIVING AREA		F1 BEDROOMS		F1 BATHROOMS	
	1120 ^{FT}		3		2
Main	1120.00 ^{FT}	Main	3.00	Main	2.00
Future	0.00 ^{FT}	Future	0.00	Future	0.00
2 nd Unit	0.00 ^{FT}	2 nd Unit	0.00	2 nd Unit	0.00



HEIDI - 3RD FLOOR

911.500

Some features shown are optional. Your Purchase & Sale Agreement governs, whether items are labeled "optional" in this document or not.



Opt Living Area this Floor: 600 sq ft
8'-0" Ceiling Heights

©2017-2019 Art Form Architecture
Heidi
Artform Home Plans

CRS 911.500 Heidi

CLG HT SHOWN 8'-0" CLG HT POSSIBLE 9'-0"

** Major Change Fee, see website plan page for cost*

F1 LIVING AREA		F1 BEDROOMS		F1 BATHROOMS	
	600 ^{FT}		2		0
Main	0.00 ^{FT}	Main	0.00	Main	0.00
Future	600.00 ^{FT}	Future	2.00	Future	
2 nd Unit	0.00 ^{FT}	2 nd Unit	0.00	2 nd Unit	0.00

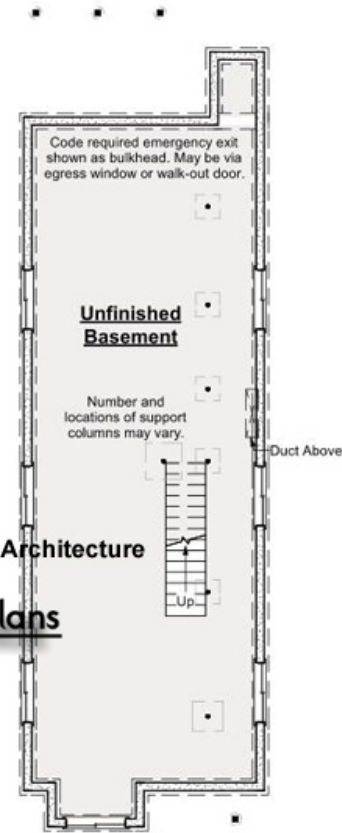


HEIDI - BASEMENT

911.500

Some features shown are optional. Your Purchase & Sale Agreement governs, whether items are labeled "optional" in this document or not.

©2017-2019 Art Form Architecture
Heidi
Artform Home Plans



CRS 911.500 Heidi

CLG HT SHOWN 7'-8" CLG HT POSSIBLE 9'-0"

* Major Change Fee, see website plan page for cost

F1 LIVING AREA		F1 BEDROOMS		F1 BATHROOMS	
	0 FT		0		0
Main	0.00 FT	Main	0.00	Main	0.00
Future	0.00 FT	Future	0.00	Future	0.00
2 nd Unit	0.00 FT	2 nd Unit	0.00	2 nd Unit	0.00



Art Form Architecture, LLC

HEIDI - FRONT ELEVATION

911.500

Some features shown are optional. Your Purchase & Sale Agreement governs, whether items are labeled "optional" in this document or not.



CRS 911.500 Heidi



Art Form Architecture, LLC

HEIDI - RIGHT ELEVATION

911.500

Some features shown are optional. Your Purchase & Sale Agreement governs, whether items are labeled "optional" in this document or not.



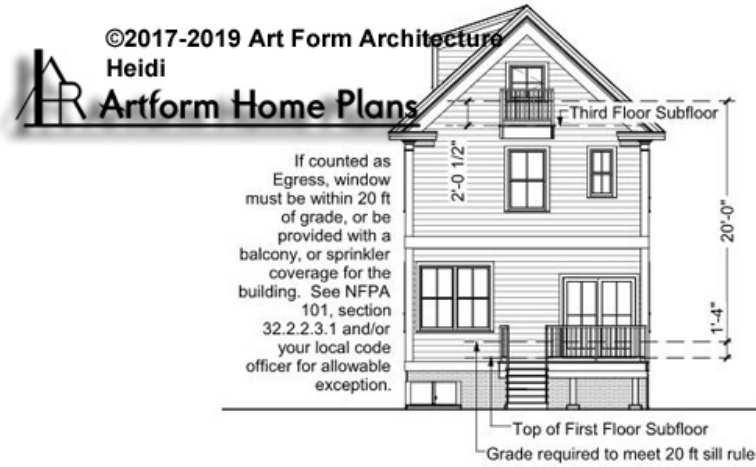
CRS 911.500 Heidi



HEIDI - REAR ELEVATION

911.500

Some features shown are optional. Your Purchase & Sale Agreement governs, whether items are labeled "optional" in this document or not.



CRS 911.500 Heidi



Art Form Architecture, LLC

HEIDI - LEFT ELEVATION

911.500

Some features shown are optional. Your Purchase & Sale Agreement governs, whether items are labeled "optional" in this document or not.



CRS 911.500 Heidi