



HARPER

872.124.v8 GL

In addition to our Terms and Conditions (the "Terms"), please be aware of the following:

Art Form Architecture, LLC ("Artform") requires that our Drawings be built substantially as designed. Artform will not be obligated by or liable for use of this design with markups as part of any builder agreement. While we attempt to accommodate where possible and reasonable, and where the changes do not denigrate our design, any and all changes to Drawings must be approved in writing by Artform. It is recommended that you have your Drawing updated by Artform prior to attaching any Drawing to any builder agreement. Artform shall not be responsible for the misuse of or unauthorized alterations to any of its Drawings.



Width 46.00 FT

Depth 42.25 FT

Height 32.50 FT

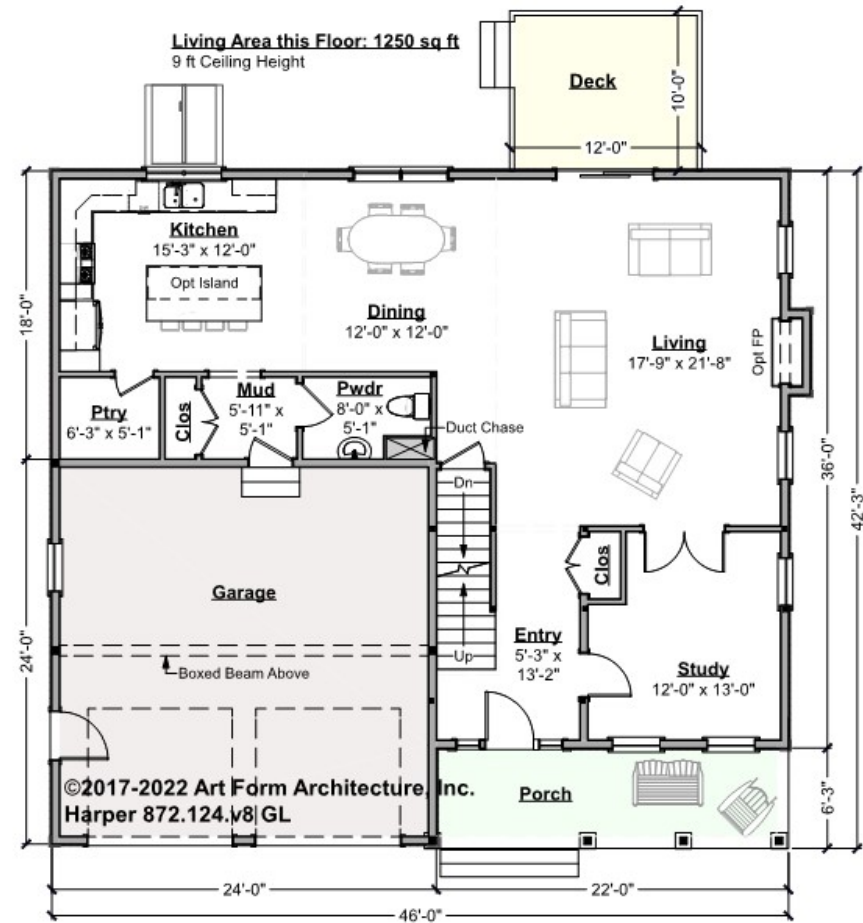
LIVING AREA		BEDROOMS		BATHROOMS	
	2779 FT		5		2.5
Main	2779 FT	Main	4	Main	2.5
Future	0 FT	Future	1	Future	0
2 nd Unit	0 FT	2 nd Unit	0	2 nd Unit	0



HARPER - 1ST FLOOR

872.124.v8 GL

Some features shown are optional. Your Purchase & Sale Agreement governs, whether items are labeled "optional" in this document or not.



CLG HT SHOWN 9'-0" CLG HT POSSIBLE 8'-0"

* Major Change Fee, see website plan page for cost

F1 LIVING AREA	1250 FT	F1 BEDROOMS	1	F1 BATHROOMS	0.5
Main	1250.00 FT	Main		Main	0.50
Future	FT	Future	1.00	Future	
2 nd Unit	FT	2 nd Unit		2 nd Unit	

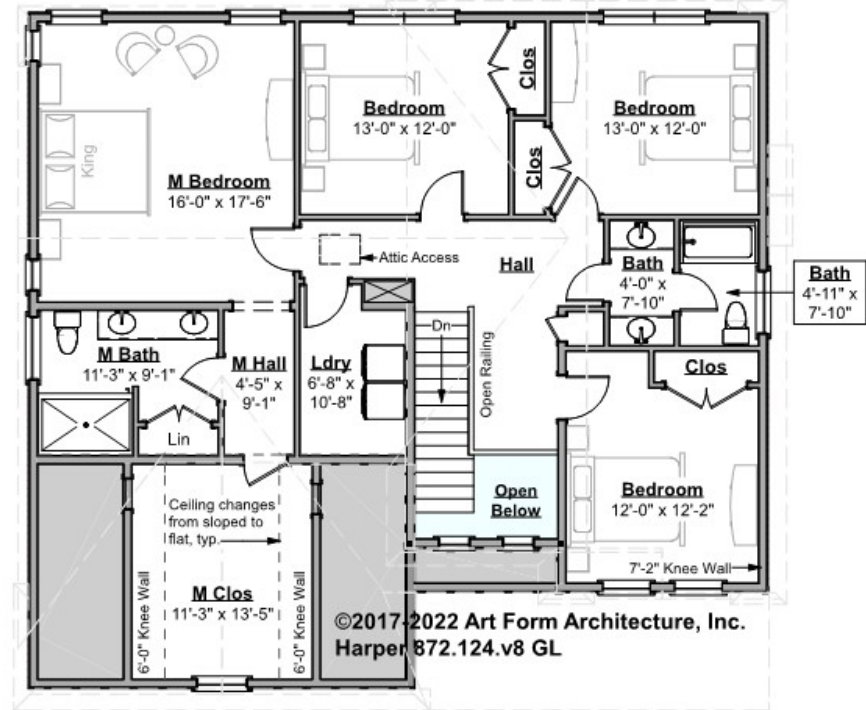


HARPER - 2ND FLOOR

872.124.v8 GL

Some features shown are optional. Your Purchase & Sale Agreement governs, whether items are labeled "optional" in this document or not.

Living Area this Floor: 1529 sq ft
8 ft Ceiling Height



CLG HT SHOWN 8'-0" CLG HT POSSIBLE 9'-0"

* Major Change Fee, see website plan page for cost

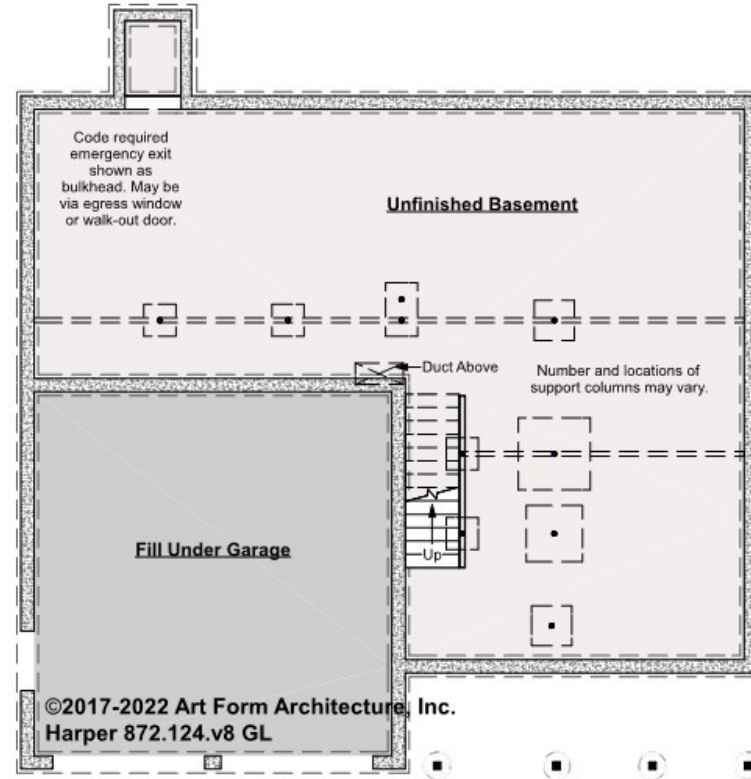
F1 LIVING AREA	1529 FT	F1 BEDROOMS	4	F1 BATHROOMS	2
Main	1529.00 FT	Main	4.00	Main	2.00
Future	FT	Future		Future	
2 nd Unit	FT	2 nd Unit		2 nd Unit	



HARPER - BASEMENT

872.124.v8 GL

Some features shown are optional. Your Purchase & Sale Agreement governs, whether items are labeled "optional" in this document or not.



CLG HT SHOWN 7'-8"

CLG HT POSSIBLE 9'-0"

* Major Change Fee, see website plan page for cost

F1 LIVING AREA		F1 BEDROOMS		F1 BATHROOMS	
	0 FT		0		0
Main	FT	Main		Main	
Future	FT	Future		Future	
2 nd Unit	FT	2 nd Unit		2 nd Unit	



HARPER - FRONT ELEVATION

872.124.v8 GL

Some features shown are optional. Your Purchase & Sale Agreement governs, whether items are labeled "optional" in this document or not.





Art Form Architecture, LLC

HARPER - RIGHT ELEVATION

872.124.v8 GL

Some features shown are optional. Your Purchase & Sale Agreement governs, whether items are labeled "optional" in this document or not.





Art Form Architecture, LLC

HARPER - REAR ELEVATION

872.124.v8 GL

Some features shown are optional. Your Purchase & Sale Agreement governs, whether items are labeled "optional" in this document or not.





Art Form Architecture, LLC

HARPER - LEFT ELEVATION

872.124.v8 GL

Some features shown are optional. Your Purchase & Sale Agreement governs, whether items are labeled "optional" in this document or not.





Art Form Architecture, LLC

HARPER - REAR RENDER

872.124.v8 GL

Some features shown are optional. Your Purchase & Sale Agreement governs, whether items are labeled "optional" in this document or not.

