



## GREAT SCOTT CAPE

410.120.v17 GR

In addition to our Terms and Conditions (the "Terms"), please be aware of the following:

Art Form Architecture, LLC ("Artform") requires that our Drawings be built substantially as designed. Artform will not be obligated by or liable for use of this design with markups as part of any builder agreement. While we attempt to accommodate where possible and reasonable, and where the changes do not denigrate our design, any and all changes to Drawings must be approved in writing by Artform. It is recommended that you have your Drawing updated by Artform prior to attaching any Drawing to any builder agreement. Artform shall not be responsible for the misuse of or unauthorized alterations to any of its Drawings.



Width 34.00 FT

Depth 30.08 FT

Height 25.92 FT

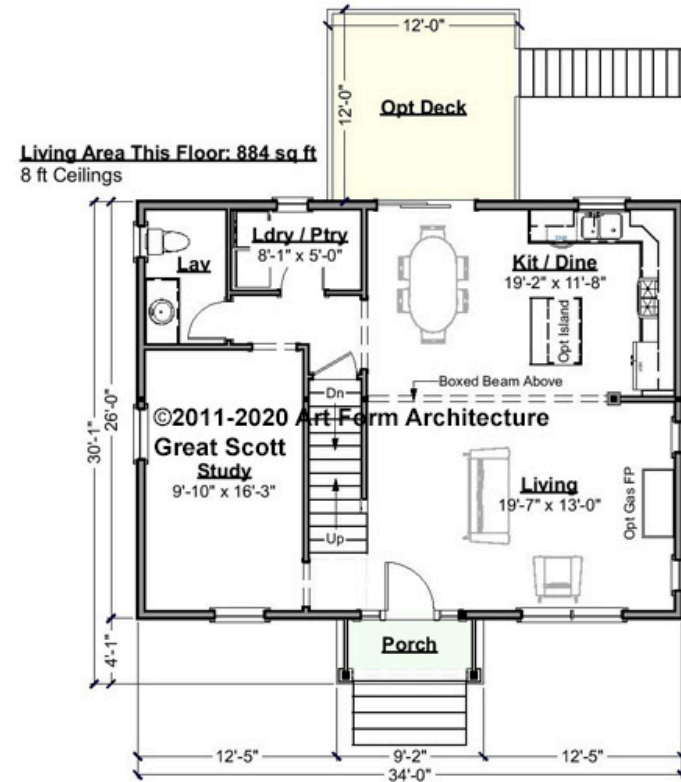
LIVING AREA		BEDROOMS		BATHROOMS	
Main	1704 FT	Main	3	Main	2.5
Future	0 FT	Future	1	Future	0
2 <sup>nd</sup> Unit	0 FT	2 <sup>nd</sup> Unit	0	2 <sup>nd</sup> Unit	0



# GREAT SCOTT CAPE - 1<sup>ST</sup> FLOOR

## 410.120.v17 GR

Some features shown are optional. Your Purchase & Sale Agreement governs, whether items are labeled "optional" in this document or not.



CRS 410.120.v17 GR Great Scott Cape

CLG HT SHOWN 8'-0"      CLG HT POSSIBLE 8'-0"

\* Major Change Fee, see website plan page for cost

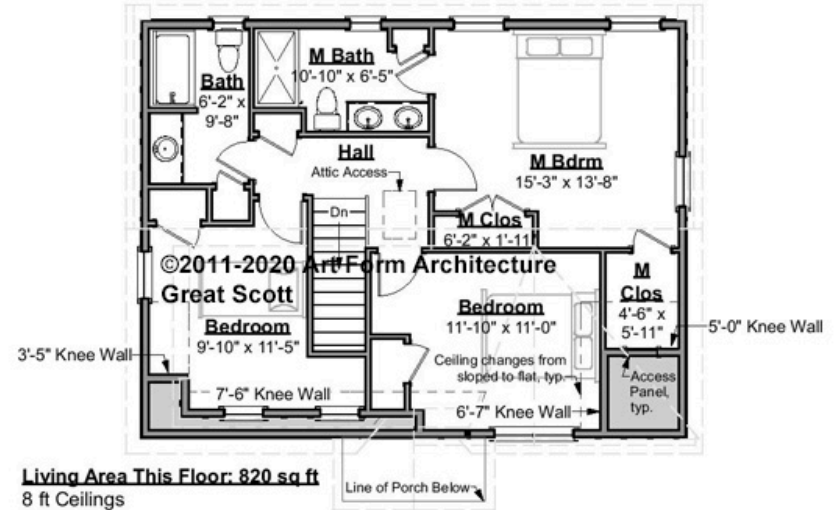
F1 LIVING AREA		F1 BEDROOMS		F1 BATHROOMS	
	884 <sup>FT</sup>		1		0.5
Main	884.00 <sup>FT</sup>	Main	0.00	Main	0.50
Future	0.00 <sup>FT</sup>	Future	1.00	Future	0.00
2 <sup>nd</sup> Unit	0.00 <sup>FT</sup>	2 <sup>nd</sup> Unit	0.00	2 <sup>nd</sup> Unit	0.00



# GREAT SCOTT CAPE - 2<sup>ND</sup> FLOOR

## 410.120.v17 GR

Some features shown are optional. Your Purchase & Sale Agreement governs, whether items are labeled "optional" in this document or not.



CRS 410.120.v17 GR Great Scott Cape

**CLG HT SHOWN 8'-0"      CLG HT POSSIBLE 8'-0"**

*\* Major Change Fee, see website plan page for cost*

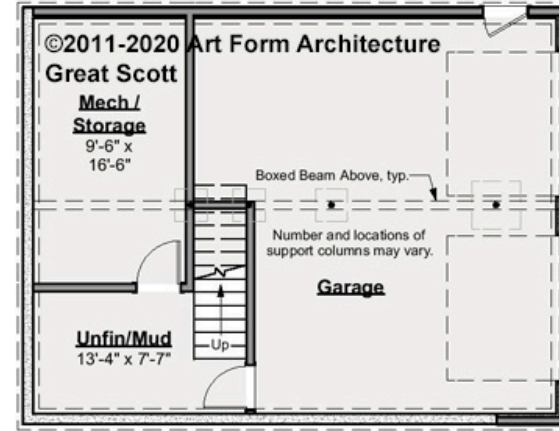
F1 LIVING AREA		F1 BEDROOMS		F1 BATHROOMS	
	820 <sup>FT</sup>		3		2
Main	820.00 <sup>FT</sup>	Main	3.00	Main	2.00
Future	0.00 <sup>FT</sup>	Future	0.00	Future	0.00
2 <sup>nd</sup> Unit	0.00 <sup>FT</sup>	2 <sup>nd</sup> Unit	0.00	2 <sup>nd</sup> Unit	0.00



# GREAT SCOTT CAPE - BASEMENT

## 410.120.v17 GR

Some features shown are optional. Your Purchase & Sale Agreement governs, whether items are labeled "optional" in this document or not.



CRS 410.120.v17 GR Great Scott Cape

**CLG HT SHOWN 7'-8"      CLG HT POSSIBLE 7'-8"**

*\* Major Change Fee, see website plan page for cost*

F1 LIVING AREA		F1 BEDROOMS		F1 BATHROOMS	
	0 FT		0		0
Main	0.00 FT	Main	0.00	Main	0.00
Future	0.00 FT	Future	0.00	Future	0.00
2 <sup>nd</sup> Unit	0.00 FT	2 <sup>nd</sup> Unit	0.00	2 <sup>nd</sup> Unit	0.00

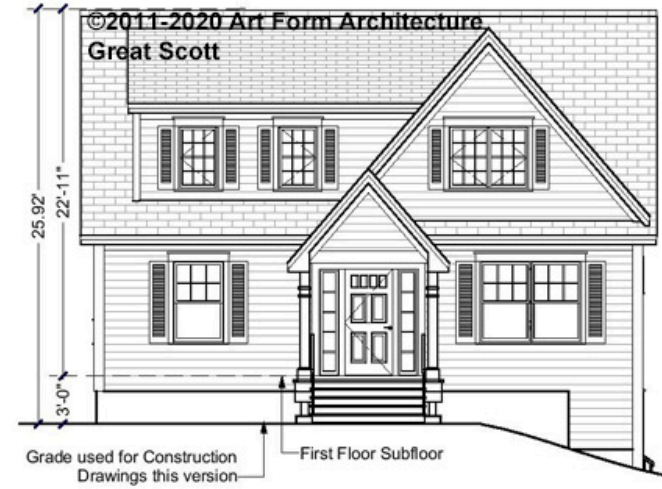


Art Form Architecture, LLC

## GREAT SCOTT CAPE - FRONT ELEVATION

410.120.v17 GR

Some features shown are optional. Your Purchase & Sale Agreement governs, whether items are labeled "optional" in this document or not.



CRS 410.120.v17 GR Great Scott Cape



Art Form Architecture, LLC

## GREAT SCOTT CAPE - RIGHT ELEVATION

410.120.v17 GR

Some features shown are optional. Your Purchase & Sale Agreement governs, whether items are labeled "optional" in this document or not.



CRS 410.120.v17 GR Great Scott Cape

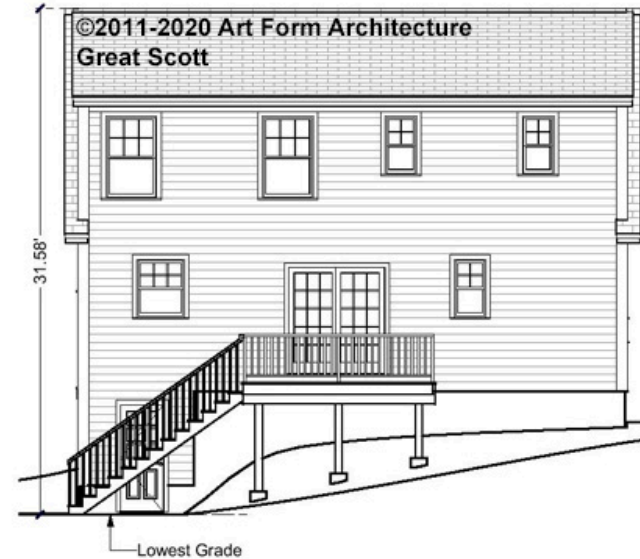




## GREAT SCOTT CAPE - REAR ELEVATION

410.120.v17 GR

Some features shown are optional. Your Purchase & Sale Agreement governs, whether items are labeled "optional" in this document or not.



CRS 410.120.v17 GR Great Scott Cape



Art Form Architecture, LLC

## GREAT SCOTT CAPE - LEFT ELEVATION

410.120.v17 GR

—  
Some features shown are optional. Your Purchase & Sale Agreement governs, whether items are labeled "optional" in this document or not.



CRS 410.120.v17 GR Great Scott Cape