



Art Form Architecture, LLC

ESPRESSO

961.124.v7 GL

In addition to our Terms and Conditions (the "Terms"), please be aware of the following:

Art Form Architecture, LLC ("Artform") requires that our Drawings be built substantially as designed. Artform will not be obligated by or liable for use of this design with markups as part of any builder agreement. While we attempt to accommodate where possible and reasonable, and where the changes do not denigrate our design, any and all changes to Drawings must be approved in writing by Artform. It is recommended that you have your Drawing updated by Artform prior to attaching any Drawing to any builder agreement. Artform shall not be responsible for the misuse of or unauthorized alterations to any of its Drawings.



Width 48.00 ^{FT}

Depth 38.00 ^{FT}

Height 25.66 ^{FT}

| LIVING AREA | | 1998 ^{FT} | BEDROOMS | | 3 | BATHROOMS | | 2.5 |
|----------------------|--|--------------------|----------------------|--|---|----------------------|--|-----|
| Main | | 1998 ^{FT} | Main | | 2 | Main | | 2.5 |
| Future | | 0 ^{FT} | Future | | 1 | Future | | 0 |
| 2 nd Unit | | 0 ^{FT} | 2 nd Unit | | 0 | 2 nd Unit | | 0 |

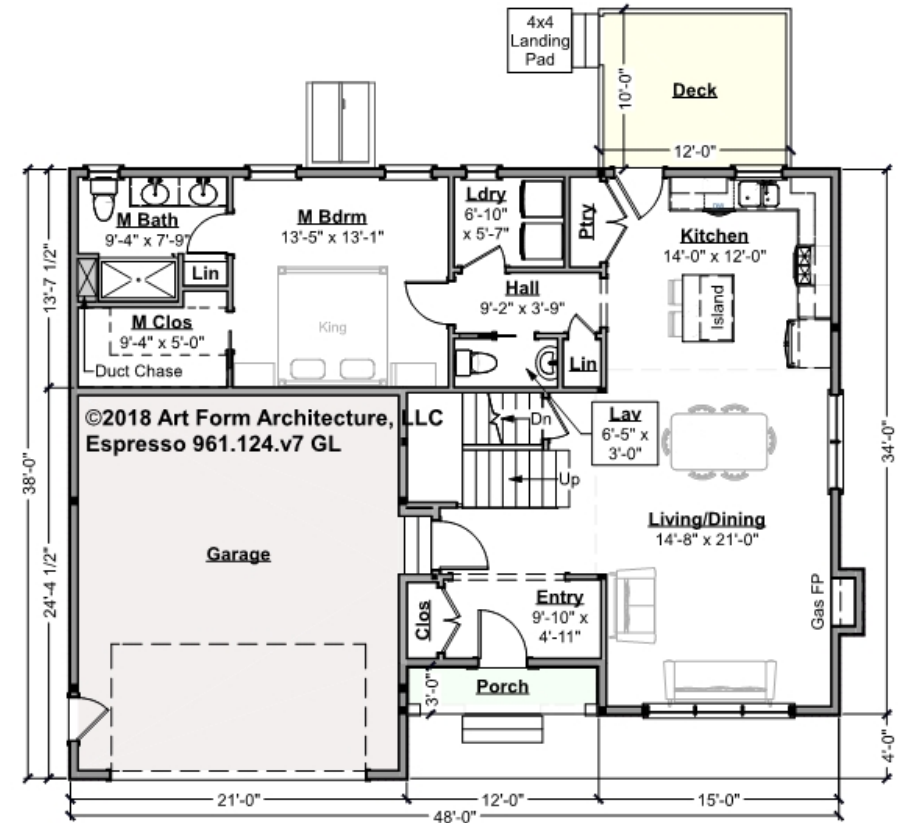


Art Form Architecture, LLC

ESPRESSO - 1ST FLOOR

961.124.v7 GL

Some features shown are optional. Your Purchase & Sale Agreement governs, whether items are labeled "optional" in this document or not.



Living Area this Floor: 1178 sq ft
9 ft Ceilings

CLG HT SHOWN 9'-0"

CLG HT POSSIBLE 8'-0"

* Major Change Fee, see website plan page for cost

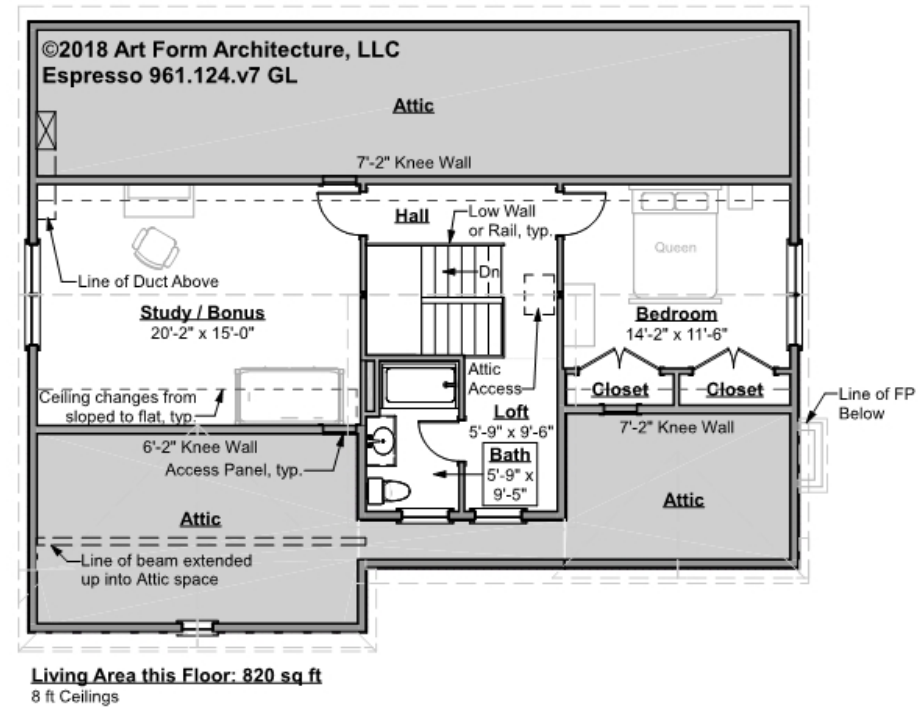
| F1 LIVING AREA | 1178 FT | F1 BEDROOMS | 1 | F1 BATHROOMS | 1.5 |
|----------------------|------------|----------------------|------|----------------------|------|
| Main | 1178.00 FT | Main | 1.00 | Main | 1.50 |
| Future | FT | Future | | Future | |
| 2 nd Unit | FT | 2 nd Unit | | 2 nd Unit | |



ESPRESSO - 2ND FLOOR

961.124.v7 GL

Some features shown are optional. Your Purchase & Sale Agreement governs, whether items are labeled "optional" in this document or not.



CLG HT SHOWN 8'-0"

CLG HT POSSIBLE 9'-0"

* Major Change Fee, see website plan page for cost

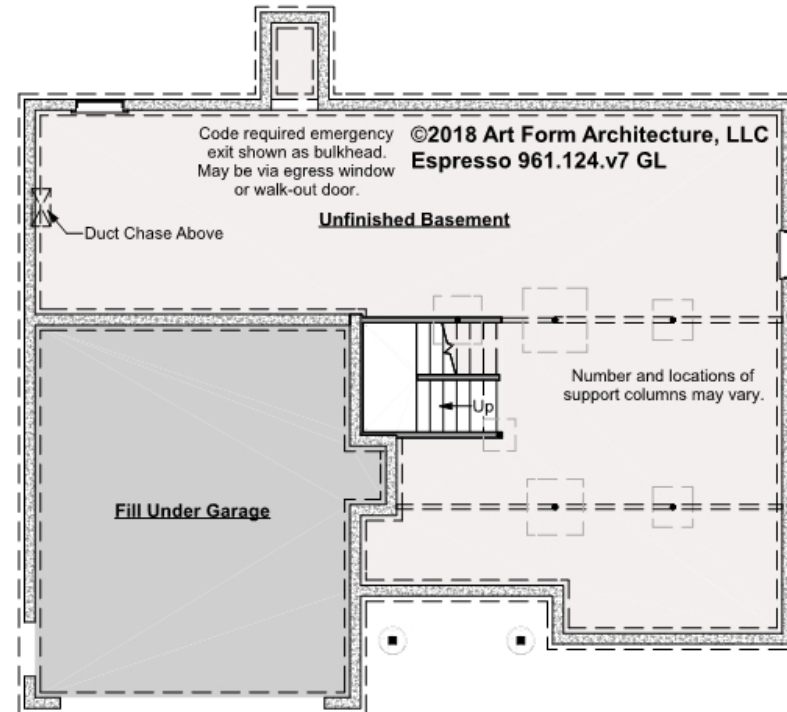
| F1 LIVING AREA | | 820 ^{FT} | F1 BEDROOMS | | 2 | F1 BATHROOMS | | 1 |
|----------------------|--|----------------------|----------------------|--|------|----------------------|--|------|
| Main | | 820.00 ^{FT} | Main | | 1.00 | Main | | 1.00 |
| Future | | FT | Future | | 1.00 | Future | | |
| 2 nd Unit | | FT | 2 nd Unit | | | 2 nd Unit | | |



ESPRESSO - BASEMENT

961.124.v7 GL

Some features shown are optional. Your Purchase & Sale Agreement governs, whether items are labeled "optional" in this document or not.



CLG HT SHOWN 7'-8"

CLG HT POSSIBLE 10' & Up

* Major Change Fee, see website plan page for cost

| F1 LIVING AREA | | 0 FT | F1 BEDROOMS | | 0 | F1 BATHROOMS | | 0 |
|----------------------|--|------|----------------------|--|---|----------------------|--|---|
| Main | | FT | Main | | | Main | | |
| Future | | FT | Future | | | Future | | |
| 2 nd Unit | | FT | 2 nd Unit | | | 2 nd Unit | | |



Art Form Architecture, LLC

ESPRESSO - FRONT ELEVATION

961.124.v7 GL

Some features shown are optional. Your Purchase & Sale Agreement governs, whether items are labeled "optional" in this document or not.



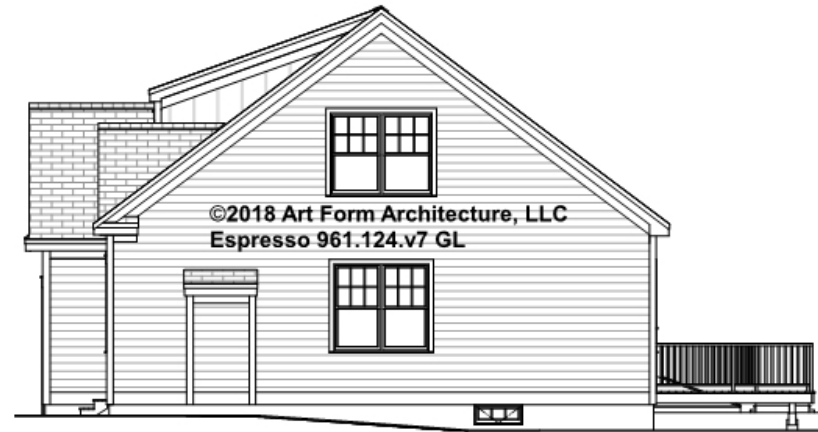


Art Form Architecture, LLC

ESPRESSO - RIGHT ELEVATION

961.124.v7 GL

Some features shown are optional. Your Purchase & Sale Agreement governs, whether items are labeled "optional" in this document or not.





Art Form Architecture, LLC

ESPRESSO - REAR ELEVATION

961.124.v7 GL

Some features shown are optional. Your Purchase & Sale Agreement governs, whether items are labeled "optional" in this document or not.



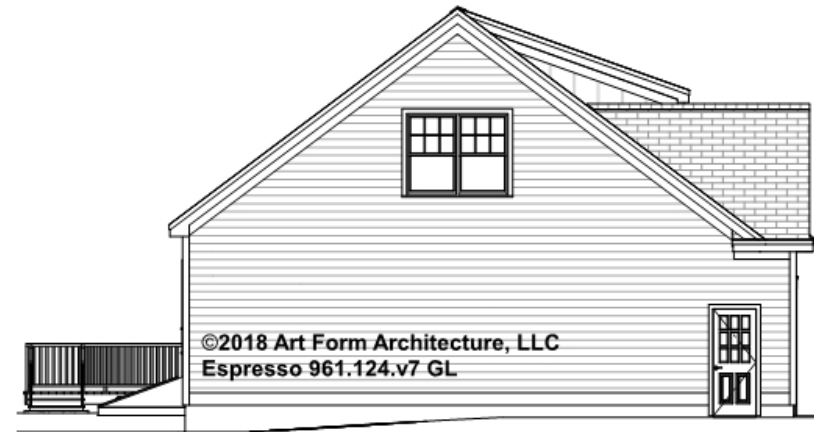


Art Form Architecture, LLC

ESPRESSO - LEFT ELEVATION

961.124.v7 GL

Some features shown are optional. Your Purchase & Sale Agreement governs, whether items are labeled "optional" in this document or not.





Art Form Architecture, LLC

ESPRESSO - REAR RENDER

961.124.v7 GL

—
Some features shown are optional. Your Purchase & Sale Agreement governs, whether items are labeled "optional" in this document or not.

