



**DOREEN**  
**912.124.v2 GL**

In addition to our Terms and Conditions (the "Terms"), please be aware of the following:

Art Form Architecture, LLC ("Artform") requires that our Drawings be built substantially as designed. Artform will not be obligated by or liable for use of this design with markups as part of any builder agreement. While we attempt to accommodate where possible and reasonable, and where the changes do not denigrate our design, any and all changes to Drawings must be approved in writing by Artform. It is recommended that you have your Drawing updated by Artform prior to attaching any Drawing to any builder agreement. Artform shall not be responsible for the misuse of or unauthorized alterations to any of its Drawings.



Width 75.00 FT

Depth 36.00 FT

Height 31.66 FT

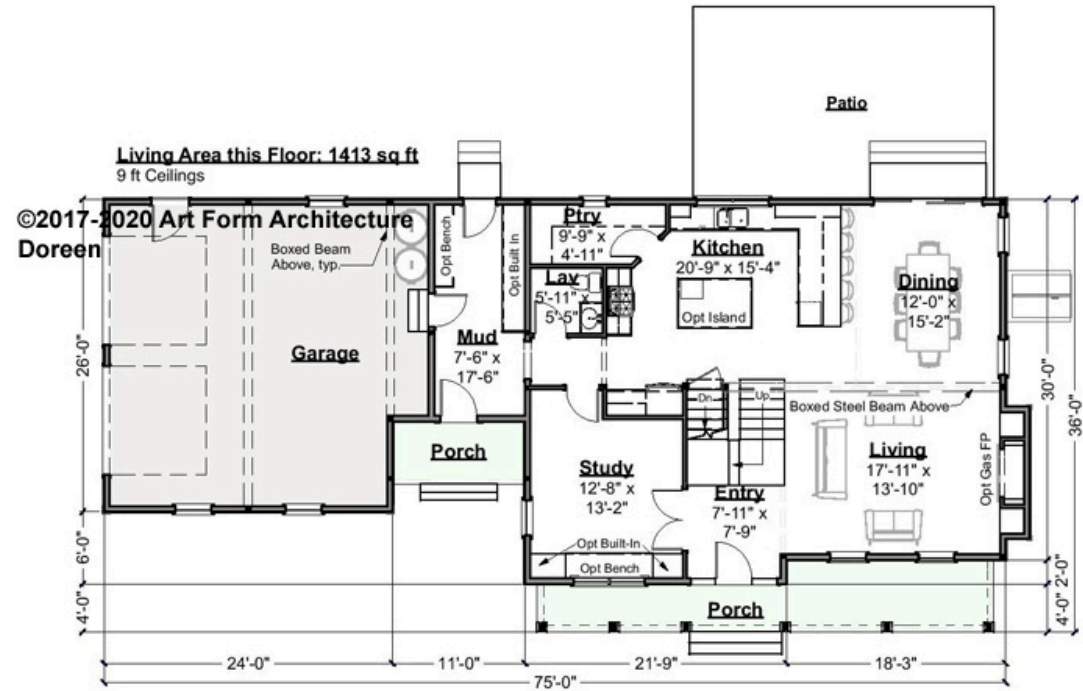
LIVING AREA		BEDROOMS		BATHROOMS	
	3210 FT <sup>2</sup>		5		2.5
Main	3210 FT <sup>2</sup>	Main	3	Main	2.5
Future	0 FT <sup>2</sup>	Future	2	Future	0
2 <sup>nd</sup> Unit	0 FT <sup>2</sup>	2 <sup>nd</sup> Unit	0	2 <sup>nd</sup> Unit	0



# DOREEN - 1<sup>ST</sup> FLOOR

## 912.124.v2 GL

Some features shown are optional. Your Purchase & Sale Agreement governs, whether items are labeled "optional" in this document or not.



CRS 912.124.v2 GL Doreen

CLG HT SHOWN 9'-0"    CLG HT POSSIBLE 8'-0"

\* Major Change Fee, see website plan page for cost

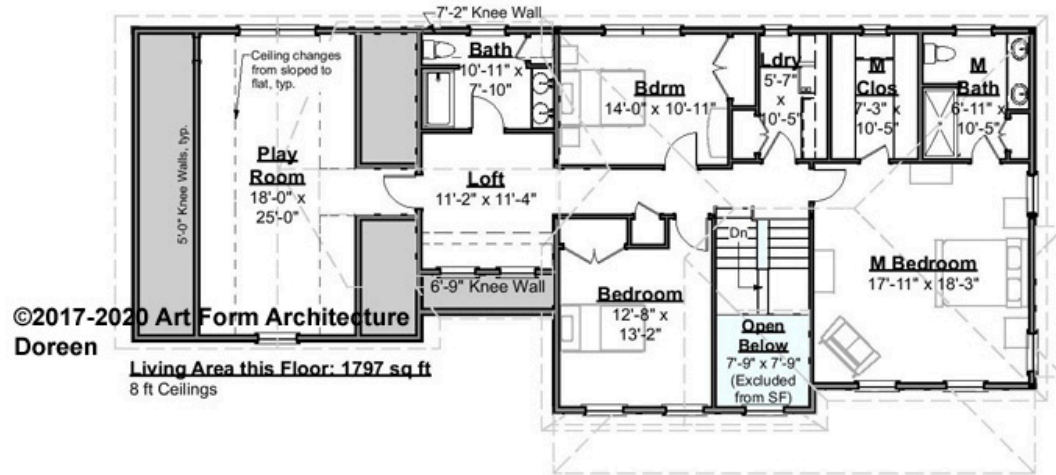
F1 LIVING AREA	1413 <sup>FT</sup>	F1 BEDROOMS	1	F1 BATHROOMS	0.5
Main	1413.00 <sup>FT</sup>	Main	0.00	Main	0.50
Future	0.00 <sup>FT</sup>	Future	1.00	Future	0.00
2 <sup>nd</sup> Unit	0.00 <sup>FT</sup>	2 <sup>nd</sup> Unit	0.00	2 <sup>nd</sup> Unit	0.00



# DOREEN - 2<sup>ND</sup> FLOOR

## 912.124.v2 GL

Some features shown are optional. Your Purchase & Sale Agreement governs, whether items are labeled "optional" in this document or not.



©2017-2020 Art Form Architecture  
Doreen  
Living Area this Floor: 1797 sq ft  
8 ft Ceilings

CRS 912.124.v2 GL Doreen

CLG HT SHOWN 8'-0"      CLG HT POSSIBLE 9'-0"

\* Major Change Fee, see website plan page for cost

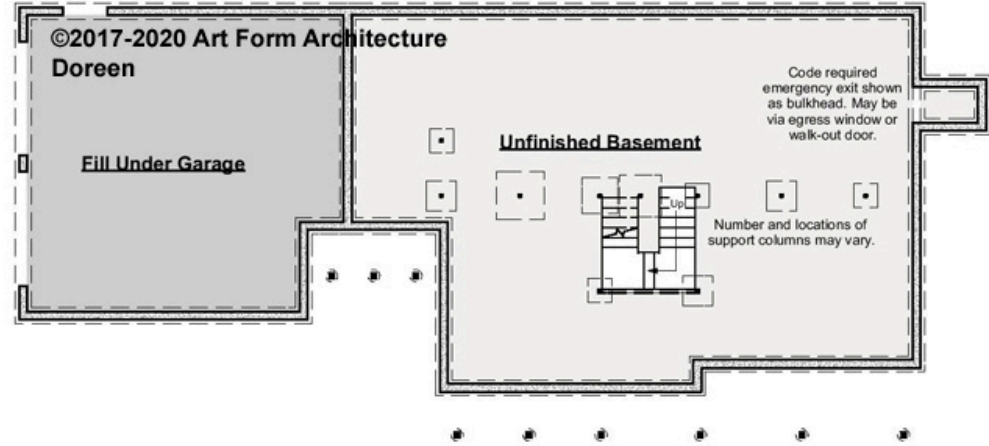
F1 LIVING AREA	1797 <sup>FT</sup>	F1 BEDROOMS	4	F1 BATHROOMS	2
Main	1797.00 <sup>FT</sup>	Main	3.00	Main	2.00
Future	0.00 <sup>FT</sup>	Future	1.00	Future	0.00
2 <sup>nd</sup> Unit	0.00 <sup>FT</sup>	2 <sup>nd</sup> Unit	0.00	2 <sup>nd</sup> Unit	0.00



# DOREEN - BASEMENT

## 912.124.v2 GL

Some features shown are optional. Your Purchase & Sale Agreement governs, whether items are labeled "optional" in this document or not.



CRS 912.124.v2 GL Doreen

**CLG HT SHOWN 7'-8"      CLG HT POSSIBLE 9'-0"**

*\* Major Change Fee, see website plan page for cost*

F1 LIVING AREA		F1 BEDROOMS		F1 BATHROOMS	
	0 FT		0		0
Main	0.00 FT	Main	0.00	Main	0.00
Future	0.00 FT	Future	0.00	Future	0.00
2 <sup>nd</sup> Unit	0.00 FT	2 <sup>nd</sup> Unit	0.00	2 <sup>nd</sup> Unit	0.00



## DOREEN - FRONT ELEVATION

### 912.124.v2 GL

Some features shown are optional. Your Purchase & Sale Agreement governs, whether items are labeled "optional" in this document or not.



CRS 912.124.v2 GL Doreen



Art Form Architecture, LLC

## DOREEN - RIGHT ELEVATION

### 912.124.v2 GL

Some features shown are optional. Your Purchase & Sale Agreement governs, whether items are labeled "optional" in this document or not.



CRS 912.124.v2 GL Doreen

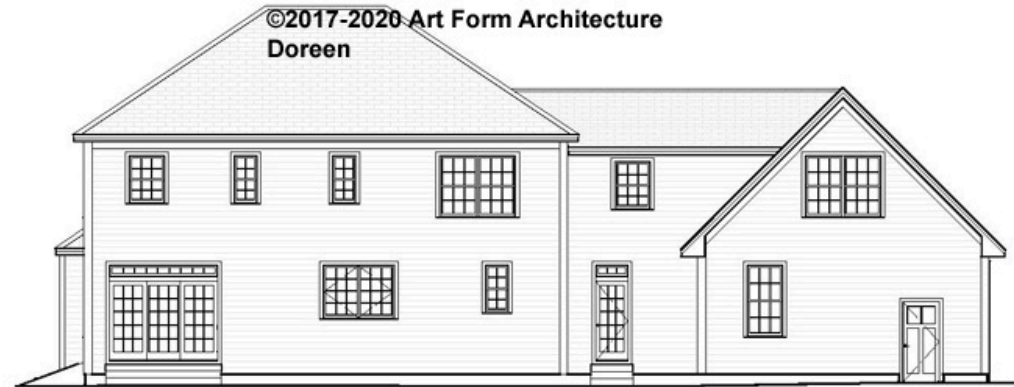


Art Form Architecture, LLC

## DOREEN - REAR ELEVATION

912.124.v2 GL

—  
Some features shown are optional. Your Purchase & Sale Agreement governs, whether items are labeled "optional" in this document or not.



CRS 912.124.v2 GL Doreen

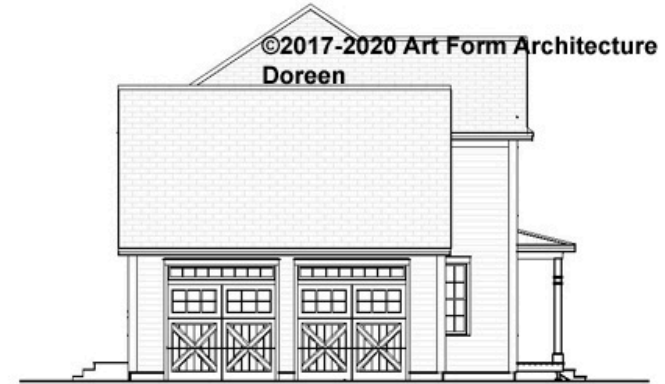


Art Form Architecture, LLC

## DOREEN - LEFT ELEVATION

912.124.v2 GL

Some features shown are optional. Your Purchase & Sale Agreement governs, whether items are labeled "optional" in this document or not.



CRS 912.124.v2 GL Doreen





Art Form Architecture, LLC

## DOREEN - REAR RENDER

912.124.v2 GL

Some features shown are optional. Your Purchase & Sale Agreement governs, whether items are labeled "optional" in this document or not.

