



DARWIN

829.124.v14 GR

In addition to our Terms and Conditions (the "Terms"), please be aware of the following:

Art Form Architecture, LLC ("Artform") requires that our Drawings be built substantially as designed. Artform will not be obligated by or liable for use of this design with markups as part of any builder agreement. While we attempt to accommodate where possible and reasonable, and where the changes do not denigrate our design, any and all changes to Drawings must be approved in writing by Artform. It is recommended that you have your Drawing updated by Artform prior to attaching any Drawing to any builder agreement. Artform shall not be responsible for the misuse of or unauthorized alterations to any of its Drawings.



Width 30.00 FT

Depth 50.50 FT

Height 32.17 FT

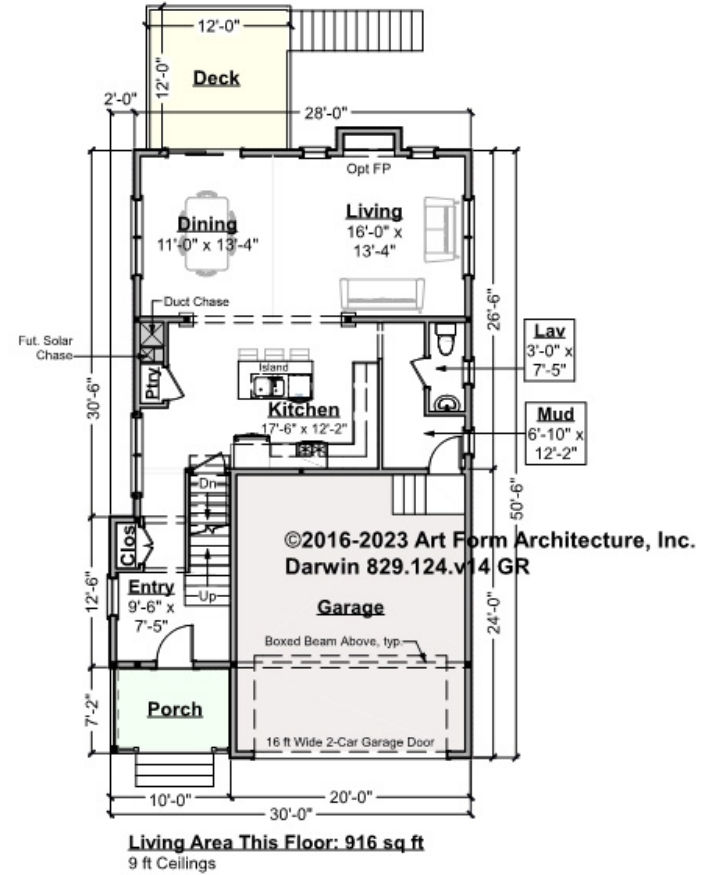
LIVING AREA		BEDROOMS		BATHROOMS	
	2120 FT		3		3.5
Main	2120 FT	Main	3	Main	3.5
Future	0 FT	Future	0	Future	0
2 nd Unit	0 FT	2 nd Unit	0	2 nd Unit	0



DARWIN - 1ST FLOOR

829.124.v14 GR

Some features shown are optional. Your Purchase & Sale Agreement governs, whether items are labeled "optional" in this document or not.



CLG HT SHOWN 9'-0" CLG HT POSSIBLE 8'-0"

* Major Change Fee, see website plan page for cost

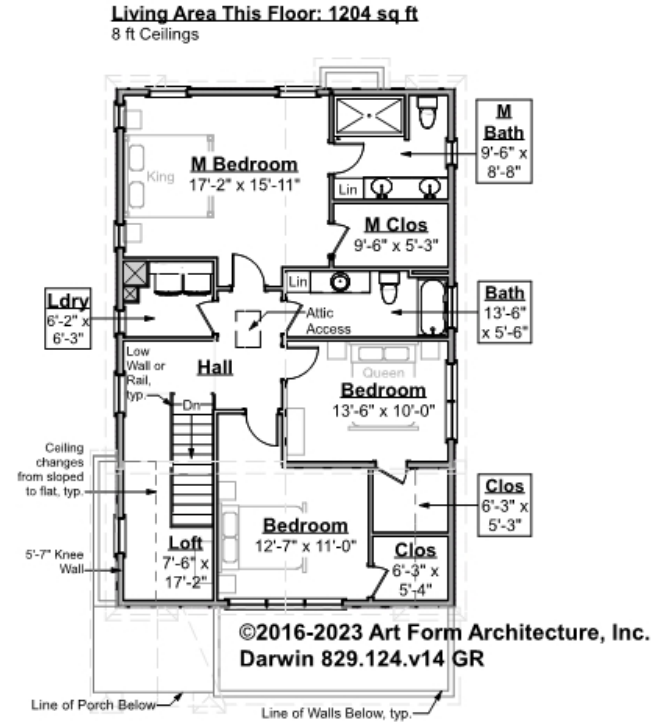
F1 LIVING AREA	916 FT	F1 BEDROOMS	0	F1 BATHROOMS	0.5
Main	916.00 FT	Main		Main	0.50
Future	FT	Future		Future	
2 nd Unit	FT	2 nd Unit		2 nd Unit	



DARWIN - 2ND FLOOR

829.124.v14 GR

Some features shown are optional. Your Purchase & Sale Agreement governs, whether items are labeled "optional" in this document or not.



CLG HT SHOWN 8'-0" CLG HT POSSIBLE 9'-0"

** Major Change Fee, see website plan page for cost*

F1 LIVING AREA	1204 FT	F1 BEDROOMS	3	F1 BATHROOMS	2
Main	1204.00 FT	Main	3.00	Main	2.00
Future	FT	Future		Future	
2 nd Unit	FT	2 nd Unit		2 nd Unit	



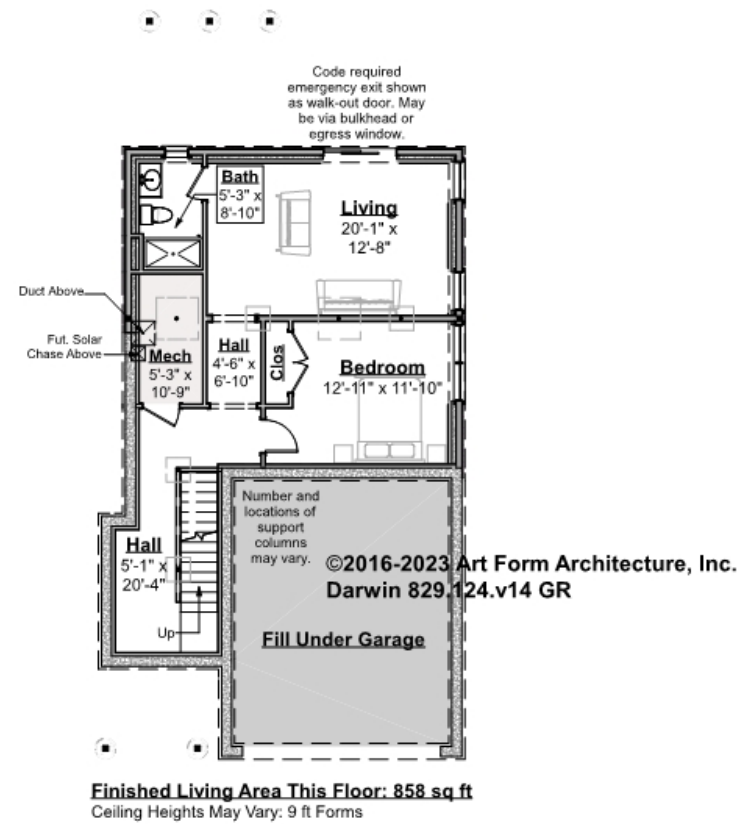
DARWIN - BASEMENT

829.124.v14 GR

NOTE: finished basement area is NOT included in main or future Living Area, but IS shown on CDs. We do this so Search doesn't mislead - everyone knows you can finish a basement!

Additional note: 10" thick foundation walls shown.

Some features shown are optional. Your Purchase & Sale Agreement governs, whether items are labeled "optional" in this document or not.



CLG HT SHOWN 8'-1" - 8'-11"

CLG HT POSSIBLE 7'-8"

* Major Change Fee, see website plan page for cost

F1 LIVING AREA		F1 BEDROOMS		F1 BATHROOMS	
0	FT	0		1	
Main	FT	Main		Main	1.00
Future	FT	Future		Future	
2 nd Unit	FT	2 nd Unit		2 nd Unit	

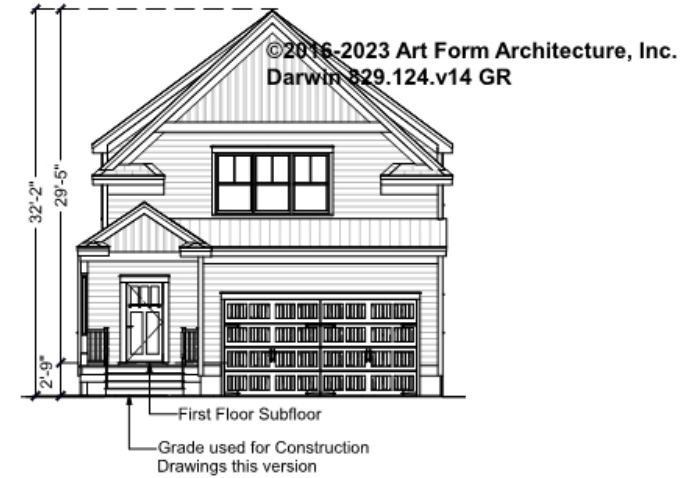


Art Form Architecture, LLC

DARWIN - FRONT ELEVATION

829.124.v14 GR

Some features shown are optional. Your Purchase & Sale Agreement governs, whether items are labeled "optional" in this document or not.



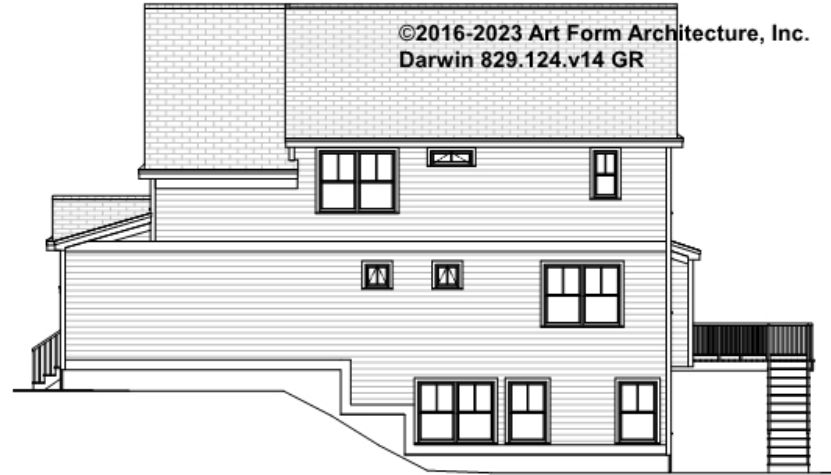


Art Form Architecture, LLC

DARWIN - RIGHT ELEVATION

829.124.v14 GR

Some features shown are optional. Your Purchase & Sale Agreement governs, whether items are labeled "optional" in this document or not.





Art Form Architecture, LLC

DARWIN - REAR ELEVATION

829.124.v14 GR

Some features shown are optional. Your Purchase & Sale Agreement governs, whether items are labeled "optional" in this document or not.

©2016-2023 Art Form Architecture, LLC.
Darwin 829.124.v14 GR





Art Form Architecture, LLC

DARWIN - LEFT ELEVATION

829.124.v14 GR

Some features shown are optional. Your Purchase & Sale Agreement governs, whether items are labeled "optional" in this document or not.





Art Form Architecture, LLC

DARWIN - REAR RENDER

829.124.v14 GR

Some features shown are optional. Your Purchase & Sale Agreement governs, whether items are labeled "optional" in this document or not.

